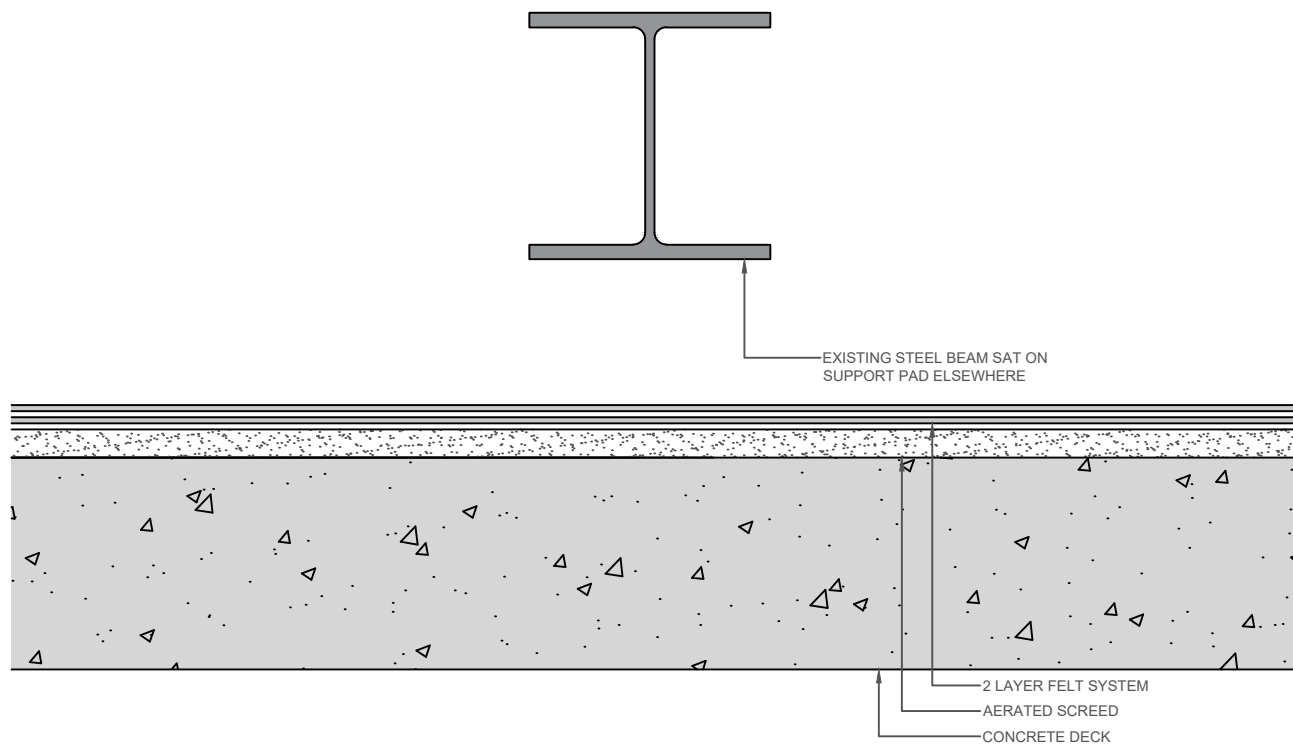
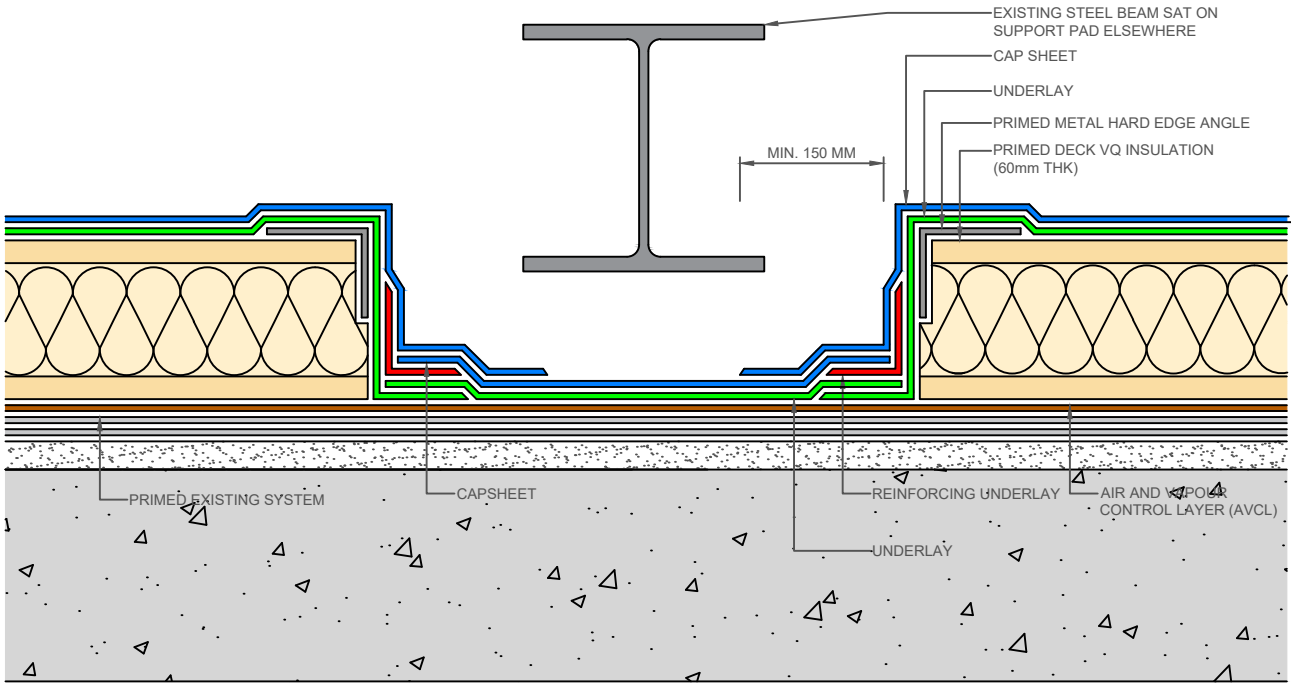


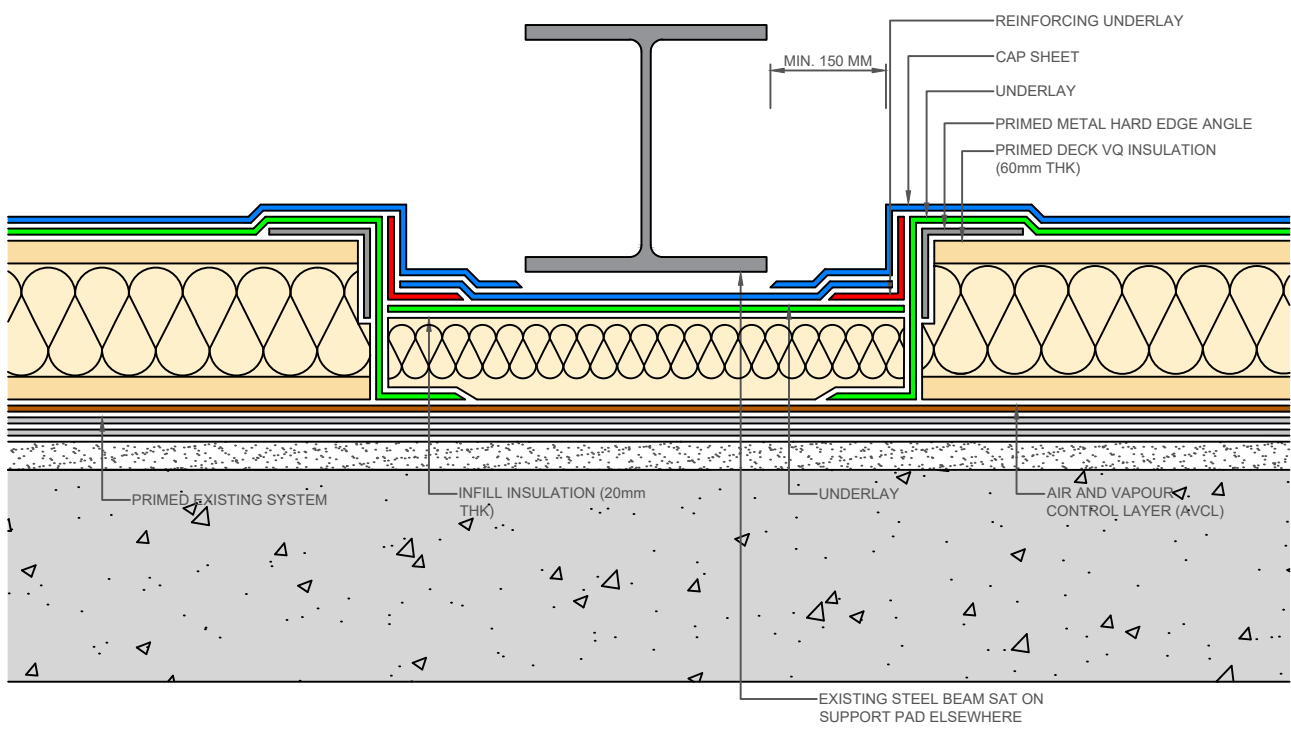
EXISTING



C: PROPOSED  
NON-INSULATED GUTTER UNDER SIDE OF STEEL BEAM



D: PROPOSED  
INSULATED GUTTER UNDER SIDE OF STEEL BEAM



	SAFETY, HEALTH AND ENVIRONMENTAL INFORMATION					Drawing Status <div>PLANNING ISSUE</div>	Suitability <div>SO</div>	Project Title <div>SWISS COTTAGE LIBRARY SALIX CARBON NET ZERO WORKS</div>						
	In addition to the hazards/risks normally associated with the types of work detailed on this drawing, note the following:							Drawing Title <div>ROOFING WORKS UNDER SIDE OF STEEL BEAM DETAIL</div>						
	CONSTRUCTION													
	MAINTENANCE/CLEANING													
	DECOMMISSIONING/DEMOLITION													
	It is assumed that all works will be carried out by a competent contractor working, where appropriate, to an approved method statement							Client <div>LONDON BOROUGH OF CAMDEN</div>						
	Rev.	Date	Description	By	Chk'd								App'd	
								Drawing Number 50206133-ATK-SCL-PR-DE-A-5002					Revision P 1	