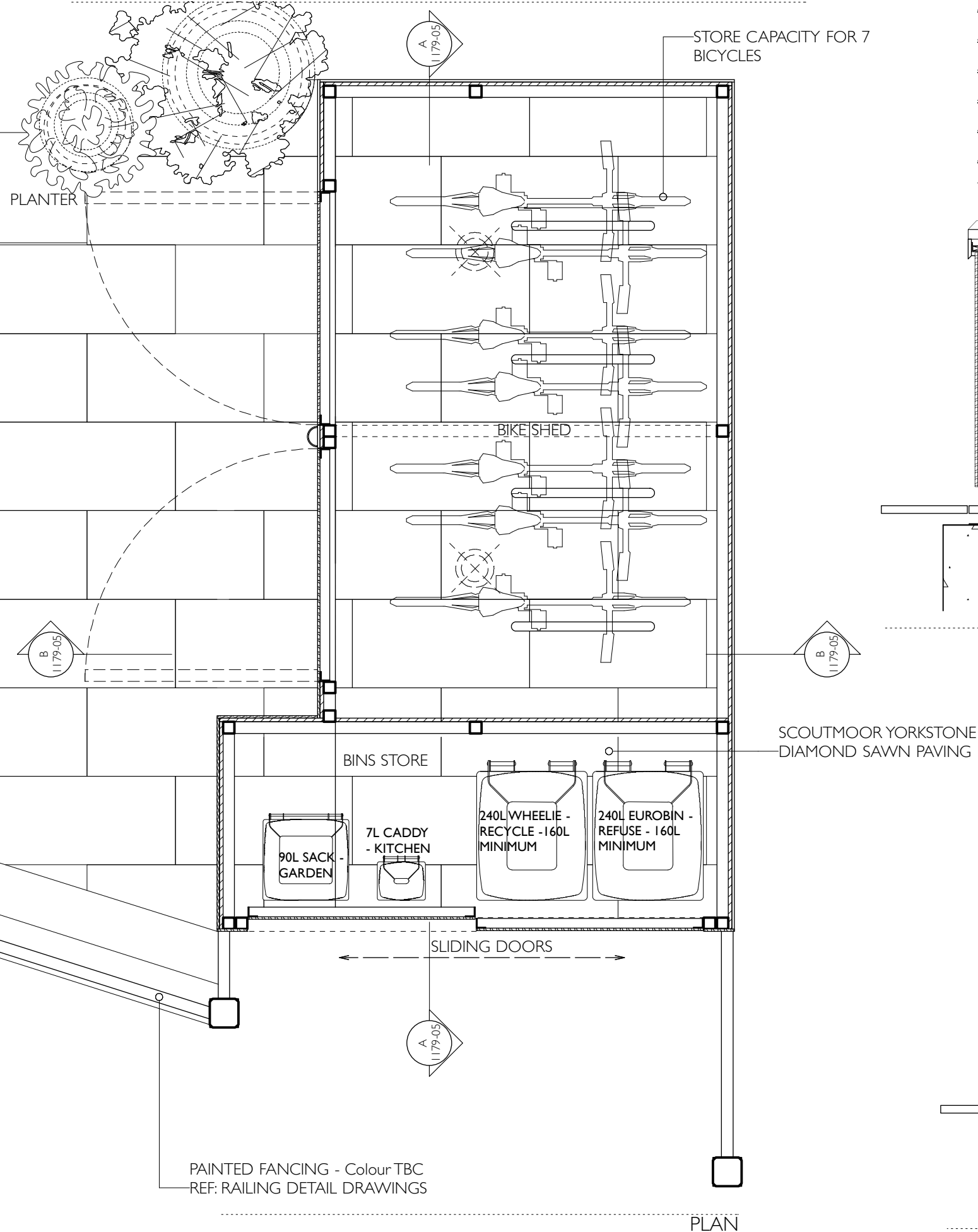


WADHAM GARDENS WASTE STORAGE / BICYCLE SHED



PLAN

WASTE RECYCLING & STORAGE PER WEEK

APARTMENT 1 - 2 BEDROOMS - 170 LITRES

APARTMENT 2 - 3 BEDROOMS - 240 LITRES

APARTMENT 3 (The Cottage) - 4 BEDROOMS - 320 LITRES

APARTMENT 4 - 1 BEDROOM - 100 LITRES

APARTMENT 5 - 2 BEDROOMS - 170 LITRES

APARTMENT 6 - 1 BEDROOM - 100 LITRES

TOTAL: 1100 LITRES (MINIMUM WASTE)

BICYCLE STORAGE (BREEAM REQUIREMENTS)

1 BICYCLE

1 BICYCLE

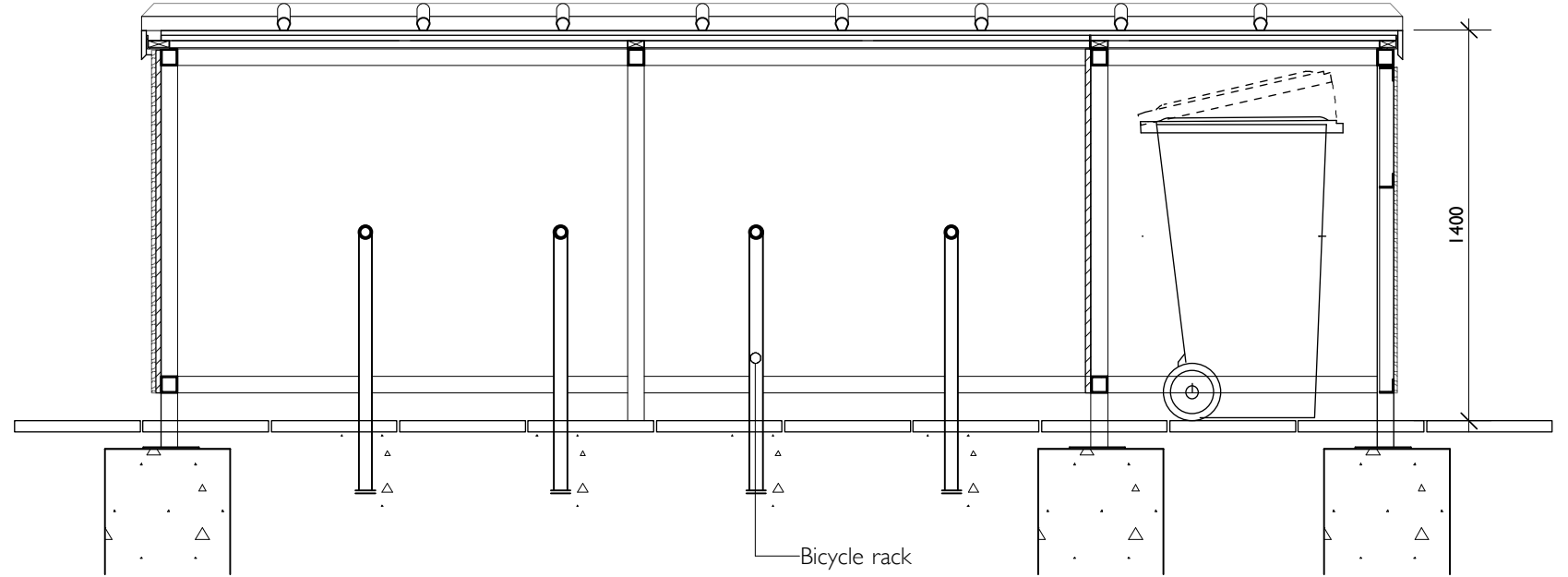
2 BICYCLES

0.5 BICYCLE

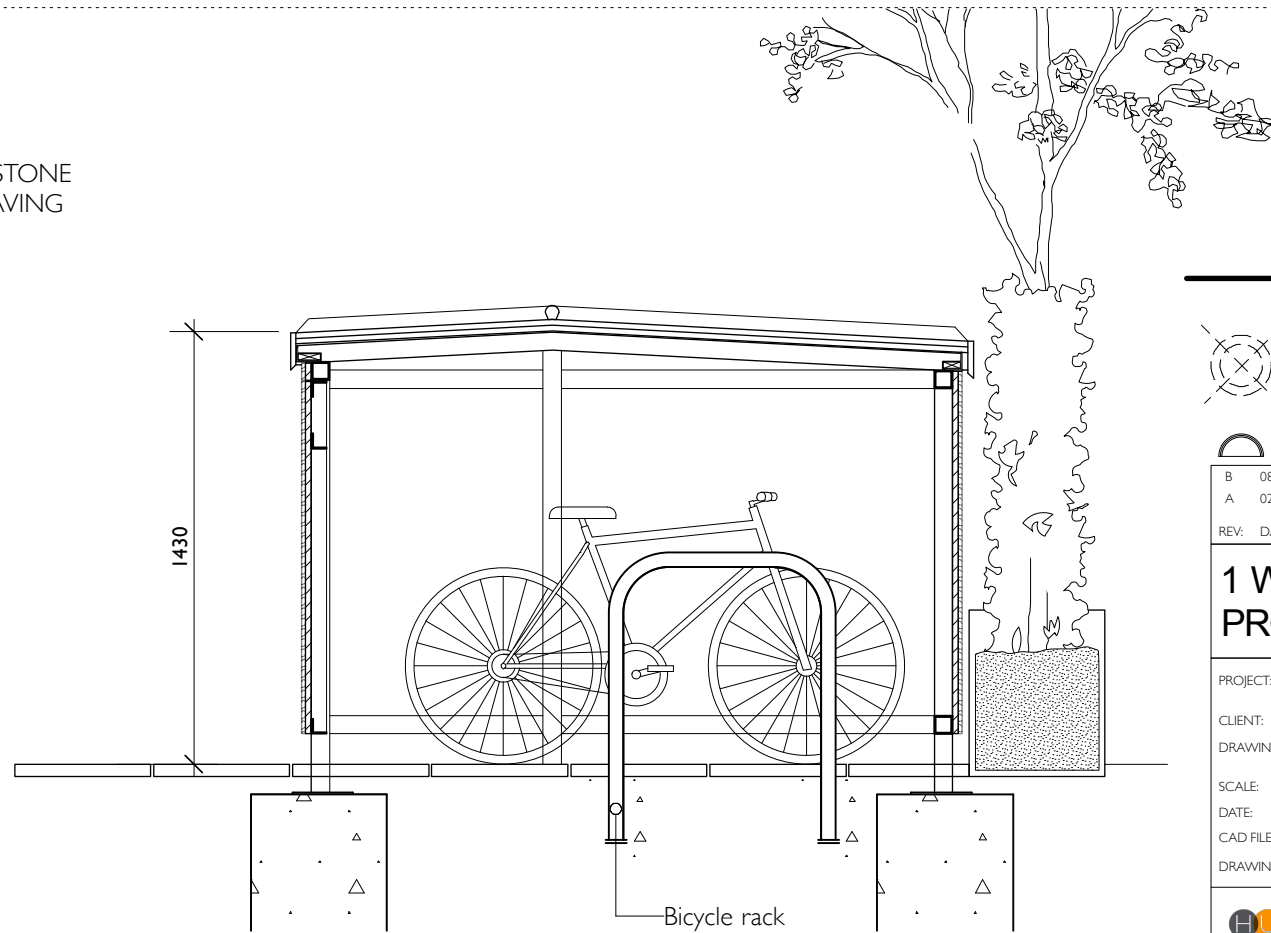
1 BICYCLE

0.5 BICYCLE

TOTAL OF 6 BICYCLES (1 BREEAM CREDIT) + 1 BICYCLE (VISITORS): 7 BICYCLES



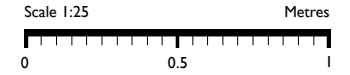
SECTION AA



SECTION BB

GENERAL NOTES
 All dimensions are to be checked on site before commencement of works.
 All sizes and dimensions to any structural elements are indicative only. See structural engineer's drawings for actual sizes/dimensions.
 Sizes of and dimensions to any service elements are indicative only. See service engineer's drawings for actual sizes/dimensions.
 This drawing is to be read in conjunction with all relevant Architect's drawings, specifications and other consultants' information.

DO NOT SCALE FROM THIS DRAWING



LEGEND

- SITE BOUNDARY
- motion sensor, pendant light hanging point
- motion sensor wall light

B	08.06.22	General update to bins store doors.	JC
A	02.10.18	General fencing design amendments following planning officer comments.	DP
REV:	DATE:	DESCRIPTION:	INITIALS:

1 WADHAM GARDENS PROPOSED DRAWINGS

PROJECT:	Wadham Gardens		
CLIENT:	Marcus Cooper Group		
DRAWING:	Proposed Waste/Cycle Storage		
SCALE:	1:25@A3	DRAWN:	DP
DATE:	May-18	CHECKED:	SW
CAD FILE:	1179-05 Proposed		
DRAWING NO:	1179-05 Proposed	REV:	B