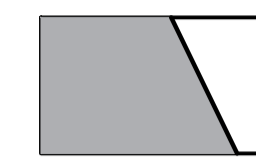
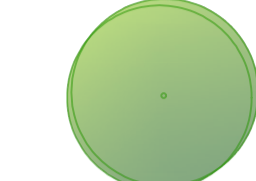
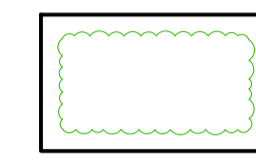

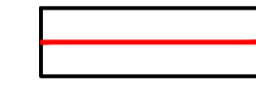
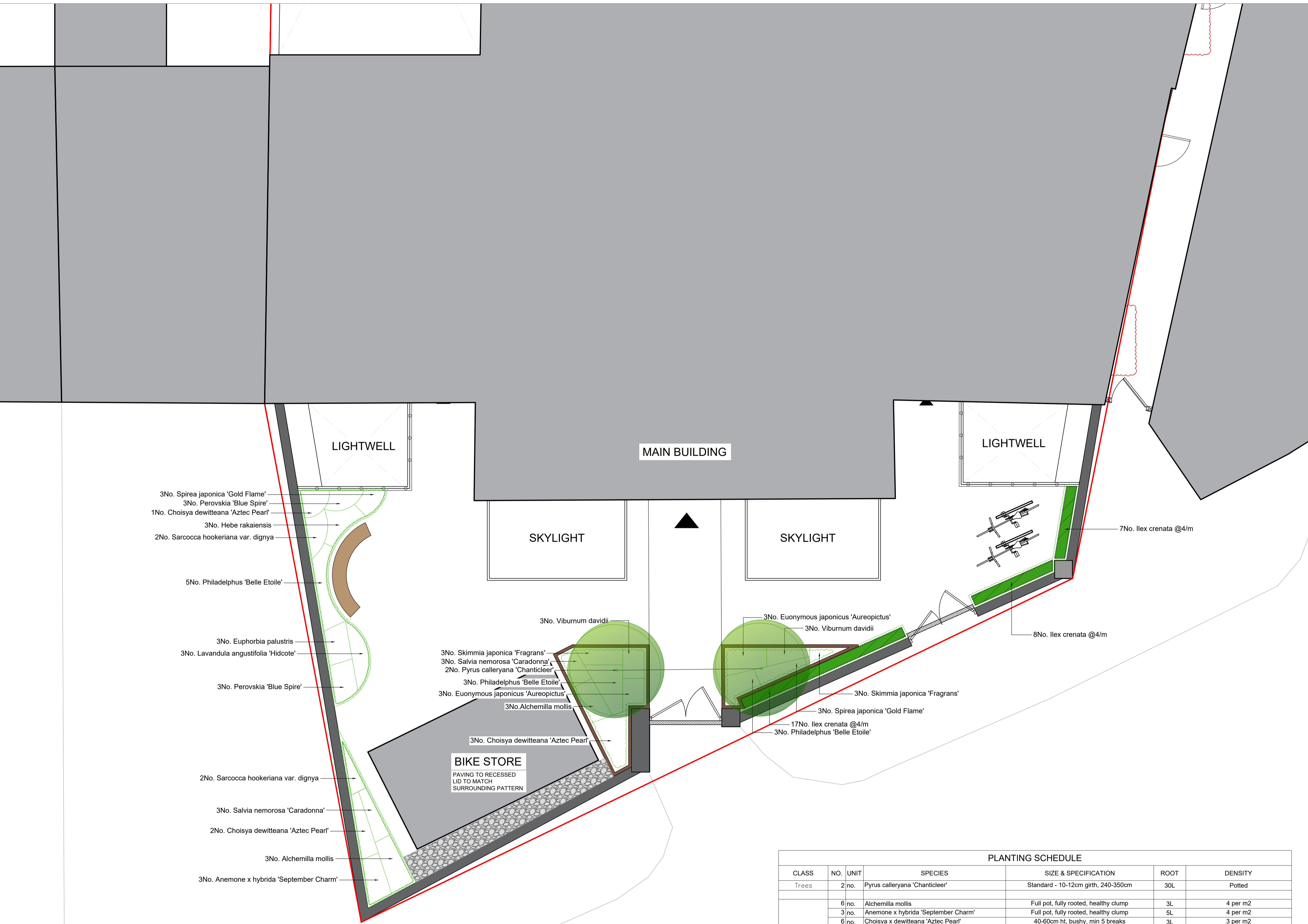


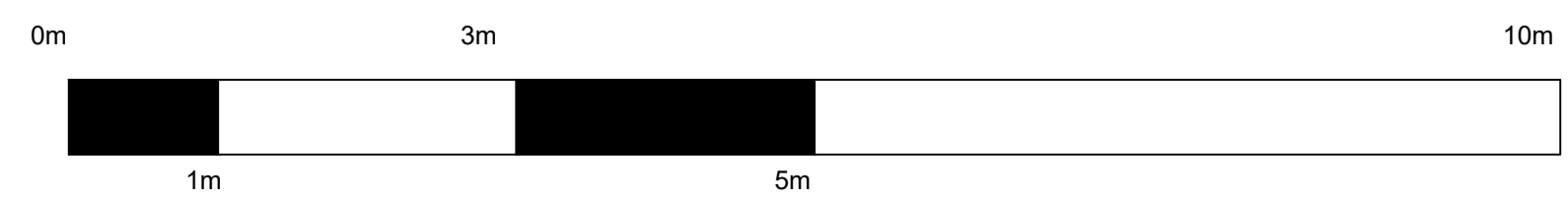
LANDSCAPE KEY

-  PROPOSED BUILDING LINE
-  PROPOSED TREE
See plant schedule for details and specification
-  DECORATIVE SHRUB PLANTING
See plant schedule for details and specification
-  LOW HEDGEROW PLANTING
See plant schedule for details and specification
-  APPLICATION BOUNDARY



PLANTING SCHEDULE

CLASS	NO.	UNIT	SPECIES	SIZE & SPECIFICATION	ROOT	DENSITY
Trees	2	no.	Pyrus calleryana 'Chanticleer'	Standard - 10-12cm girth, 240-350cm	30L	Potted
Shrubs	6	no.	Alchemilla mollis	Full pot, fully rooted, healthy clump	3L	4 per m ²
	3	no.	Anemone x hybrida 'September Charm'	Full pot, fully rooted, healthy clump	5L	4 per m ²
	6	no.	Choisy x dewitteana 'Aztec Pearl'	40-60cm ht, bushy, min 5 breaks	3L	3 per m ²
	6	no.	Euonymus japonicus 'Aureopictus'	40-60cm ht, branched min 5 breaks	3L	4 per m ²
	3	no.	Euphorbia palustris	Full pot, fully rooted, healthy clump	5L	5 per m ²
	3	no.	Hebe rakaiensis	Full pot, fully rooted, healthy clump	3L	4 per m ²
	3	no.	Lavandula angustifolia 'Hidcote'	Full pot, fully rooted, healthy clump	3L	4 per m ²
	6	no.	Perovskia 'Blue Spire'	Full pot, fully rooted, healthy clump	3L	20 per m ²
	11	no.	Philadelphus 'Belle Etoile'	60-80cm ht, branched min 7 breaks	5L	3 per m ²
	6	no.	Salvia nemorosa 'Caradonna'	20-30cm dia, bushy, full pot	3L	5 per m ²
	4	no.	Sarcocca hookeriana var. dignya	20-30cm dia, bushy, full pot	3L	4 per m ²
	6	no.	Skimmia japonica 'Fragrans'	20-30cm ht, bushy, min 5 breaks	3L	3 per m ²
6	no.	Spirea japonica 'Gold Flame'	20-30cm ht, bushy, min 5 breaks	3L	3 per m ²	
6	no.	Viburnum davidii	20-30cm dia, bushy, full pot	3L	3 per m ²	
Hedges	32	no.	Ilex crenata	30-50cm ht, bushy, min 5 breaks	5L	4 per m
General Notes			All new planting to be top-dressed with a 50mm layer of medium grade bark mulch. All shrubs & seed to be of local (UK) provenance. Use of herbicides to be avoided.			



P02 26.05.2022 Raised planters by entrance gate, LB
P01 Initial Issue
revision / date / description / drawn

Gloucester House,
399 Silbury Boulevard,
Milton Keynes,
Buckinghamshire
MK9 2AH
T 01908 303701
W www.enplan.net



client
Brooks Murray Architects

project
51 Calthorpe Street
WC1X 0HH
scale 1.50 @ A1
date MAY 2022

title
PLANTING PLAN
GROUND FLOOR
drawn LB
checked DC

drawing number
061069-EN-XX-00-DR-L-702 P02
revision

issue
S4 - Suitable for Construction Approval
DO NOT SCALE FROM THIS DWG | DRAWING SUBJECT TO COPYRIGHTS