

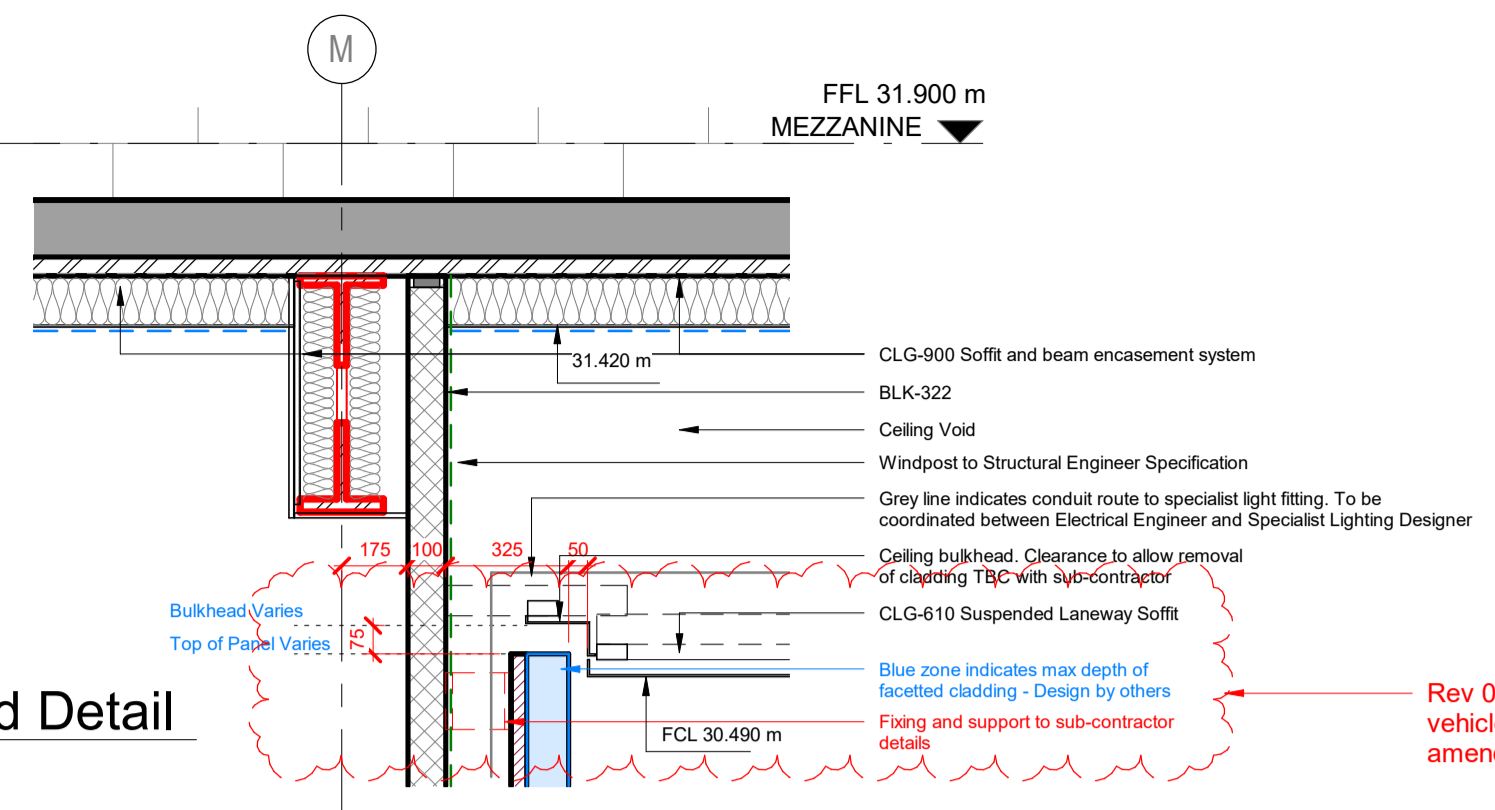
- To be developed with sub-contractor input:
- Panelisation of backing support to feature cladding. Panel width to suit feature tiles modules. Minimise joint width. Avoid visible fixing of tiles.
- Support structure/bracket fixings back to blockwork. All fixings through insulation to be thermally broken to minimise cold bridging. Seal all penetrations through vapour control layer.
- Modularisation and location of grilles. Grille sizes and setting out to be reviewed to suit size of tile modules.
- Access Control, signage and integration of specialist lighting, cabling routes and penetrations.

- Mock-up and Samples:
- Off-site mock-up for a section of feature wall; to include precast kerb, feature cladding, ceiling interface and light fitting. Refer to dwg 21-436 for proposed extent
- Provide one full faceted tile of each type; PPC finish RAL 7035 Matt showing proposed fixing method to support backing (final colour TBC)
- Provide 300x300mm sample of precast dark aggregate to cladding skirting
- Provide 500mm long section of vehicle bumper Pr_20_76_08_74

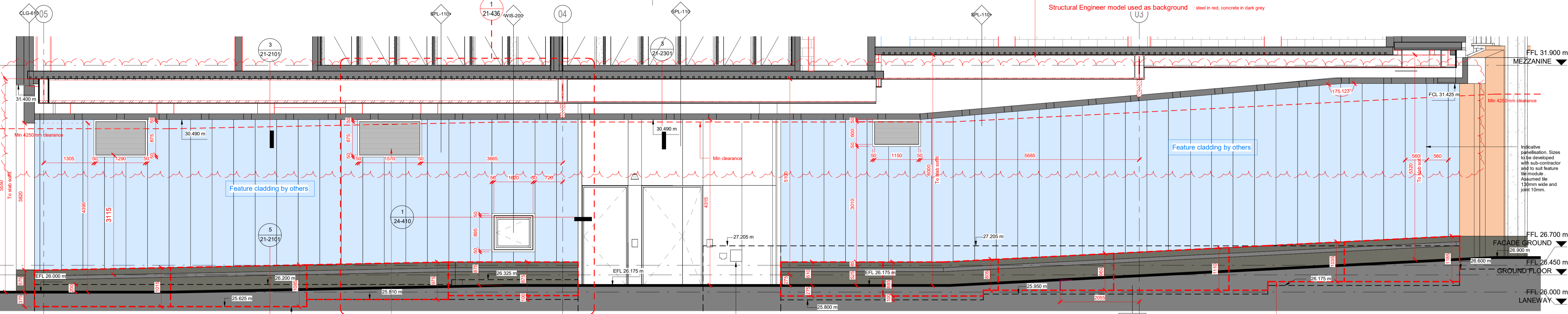
Notes:

- Dark Aggregate Concrete Skirting
 - Light Aggregate Concrete Panel
 - Fluted Concrete
 - Zone for feature cladding. Geometry and setting out of faceted cladding by others
 - Waterproofing Layer
 - Vapour Control Layer
 - Cavity barrier
 - PPC aluminium louvre to M&E specification within suppressed concealed frame and insect mesh. Colour TBC
- To be read in conjunction with Specialist Lighting drawings for geometry and setting out of faceted tiles.
- All support and fixing details to be developed with sub-contractor; shown indicatively.
- Structural Engineer model used as background - steel in red, concrete in dark grey
- Pr_20_76_08_74 Rubber impact protectors
 - TWB-E-100 Extruded D section dock bumper by Thorworld Industries Ltd or equivalent approved. Colour Black. Accessories: Mitered corners
 - Exterior Linear LED
 - Building mounted lighting
 - Fixed access control point for entry
 - Card access
 - Wifi Point
 - Exit Sign
 - Proximity monitor
 - CCTV type camera
 - Building mounted signage blades

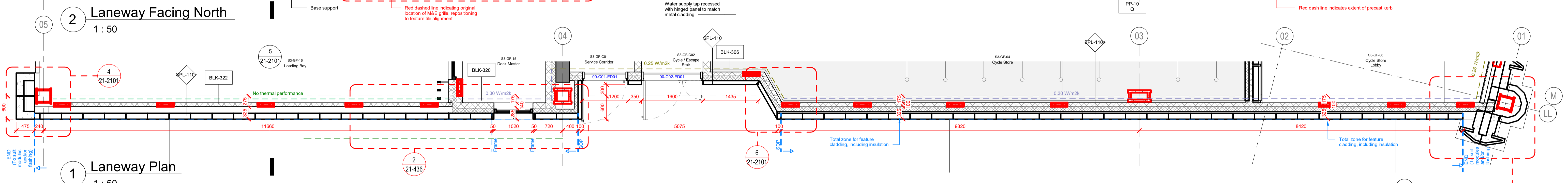
3 Head Detail
1 : 20



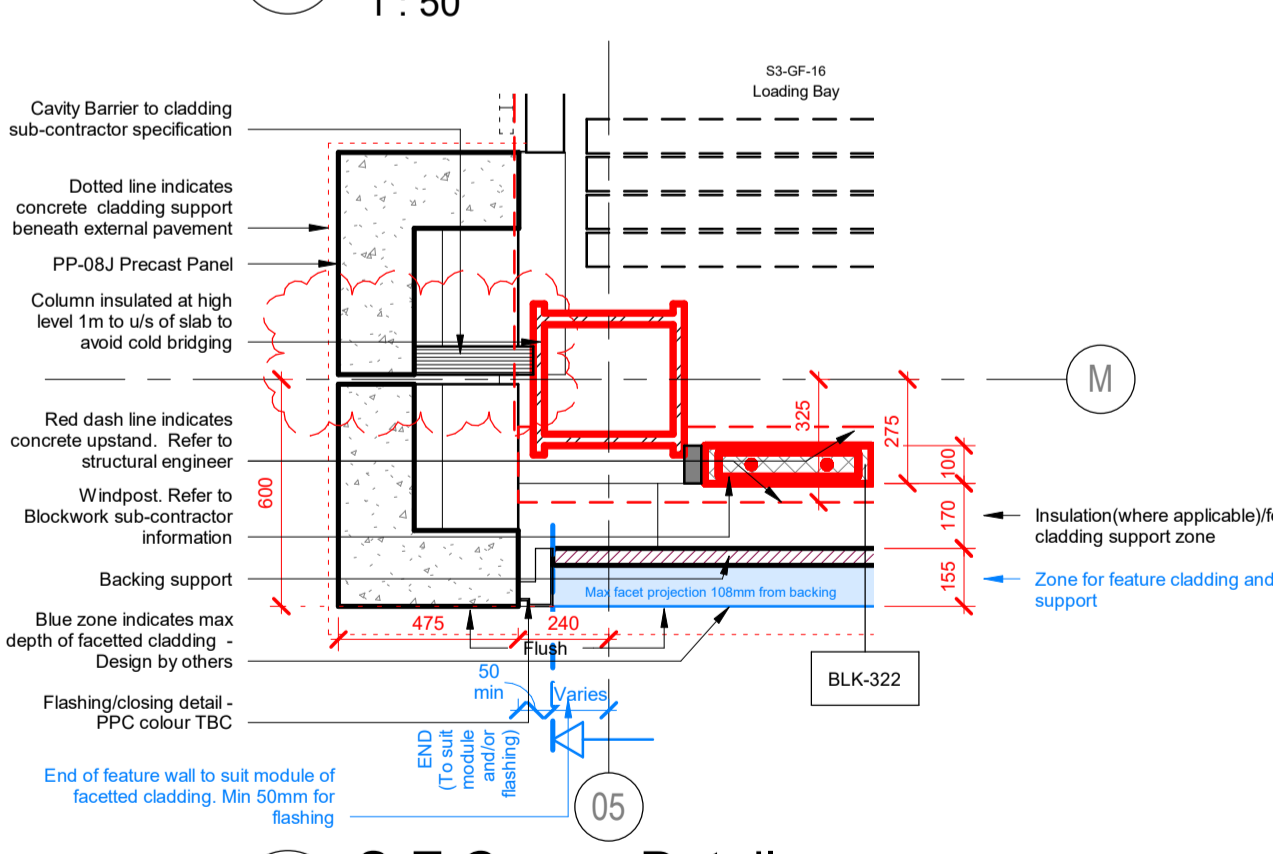
Rev 02 - Ceiling level raised for vehicle clearance. Grilles sizes amended to suit feature tiling sizes



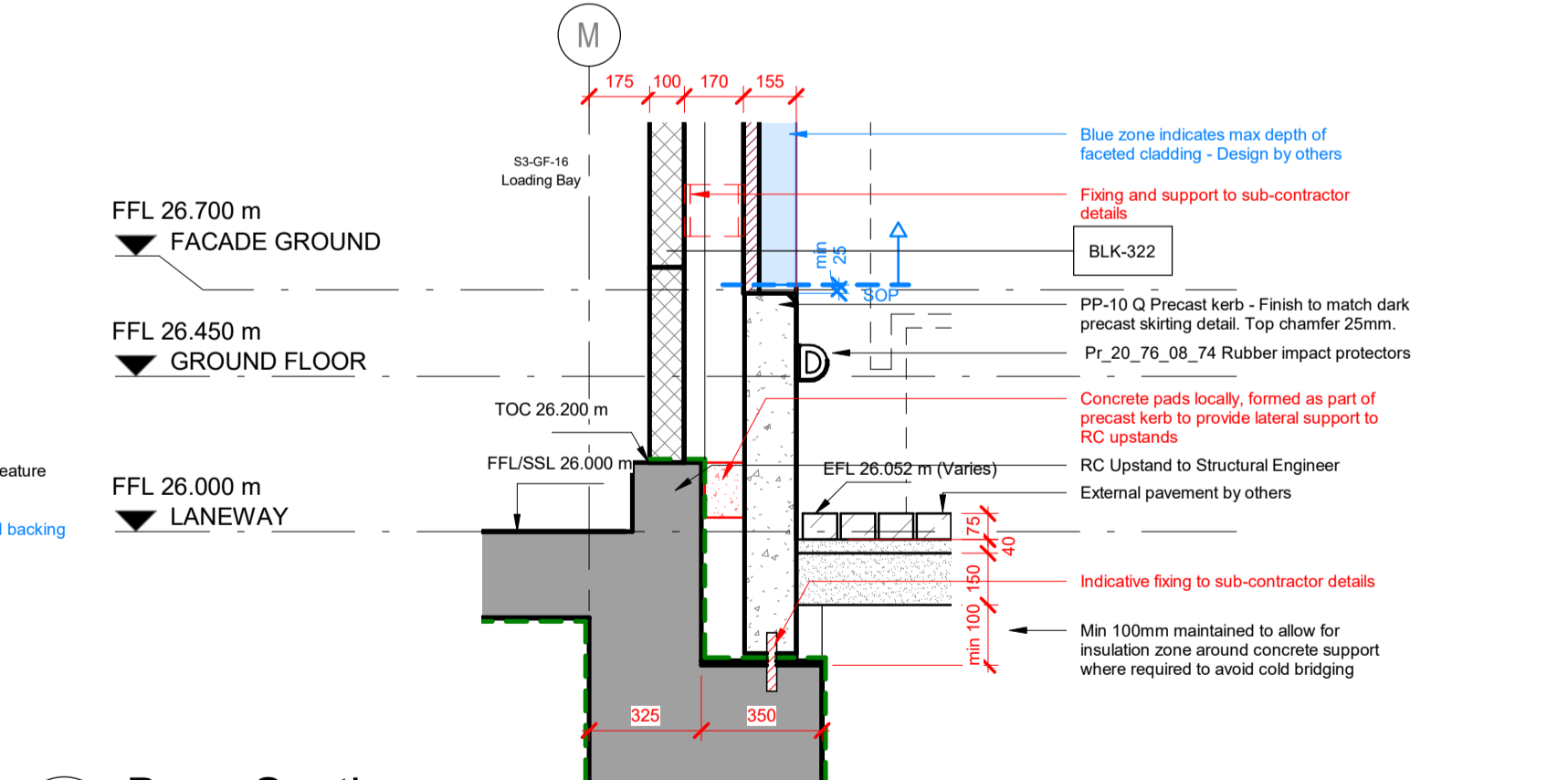
2 Laneway Facing North
1 : 50



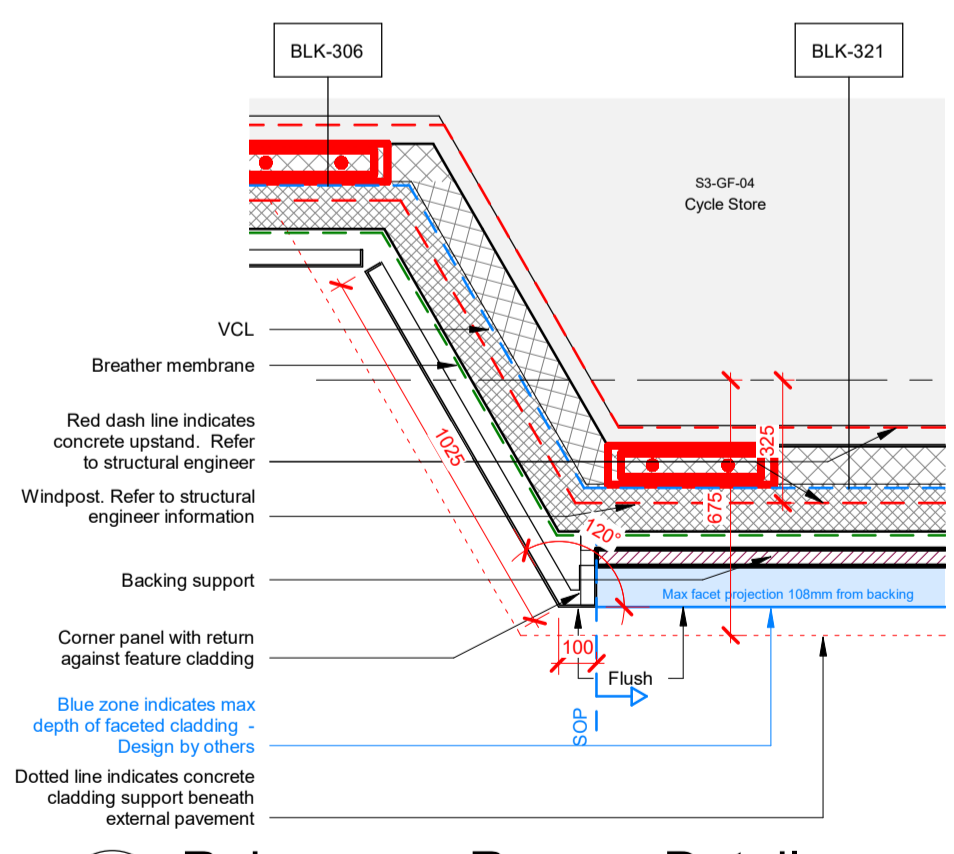
1 Laneway Plan
1 : 50



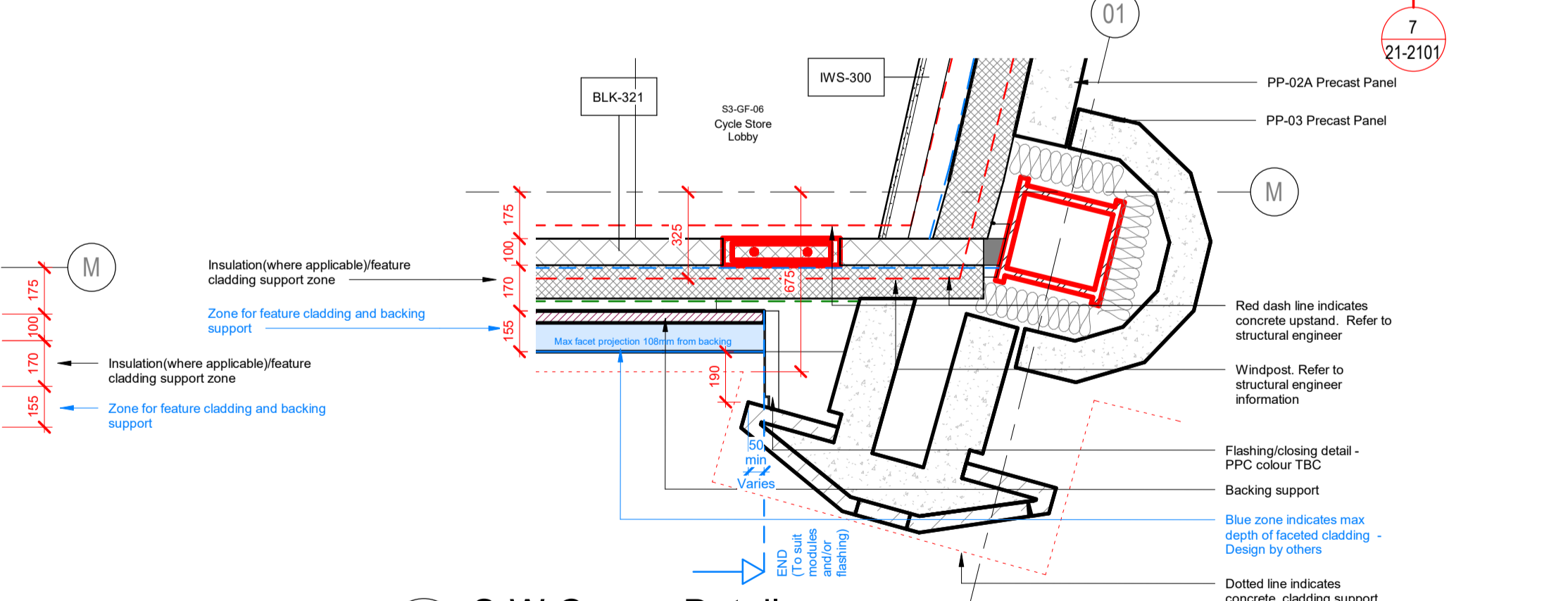
4 S-E Corner Detail
1 : 20



5 Base Section
1 : 20



6 Rainscreen Recess Detail
1 : 20



7 S-W Corner Detail
1 : 20

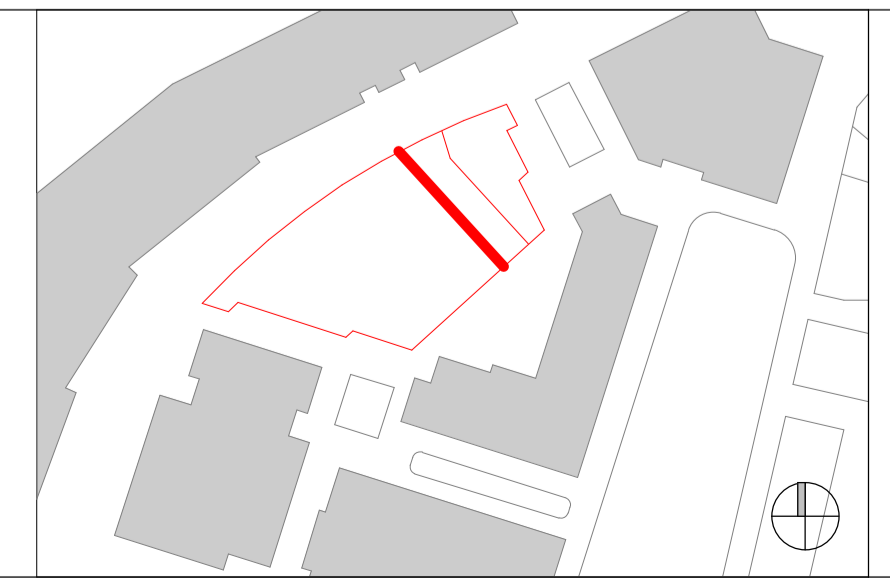
Rev	Date	Revision	By	Chk	Notes
01	210205	Issue for Contractor's Proposals	FM	SL	
02	220505	Stage 5 Issue	FM	NH	

Notes:

- For Health & Safety related information please refer to the Rolling Designers Risk Register. Where relevant, elements identified on this register are highlighted within the model and on the drawings with the following logo.
- DO NOT SCALE FROM DRAWING.
- Drawing to be printed in colour.
- All information contained in this drawing (including digital data) should be checked and verified prior to any fabrication or construction. Any inconsistencies or omissions should be reported to Bennetts Associates.
- Unless otherwise stated, all grids or co-ordinates are based on the Ordnance Survey National Grid via GRS Observations.
- Unless otherwise stated, all spot heights and levels are expressed as AOD for "above Ordnance datum" based on the Ordnance Survey ODN (Ordnance Datum Newlyn).
- Bennetts Associates Architects make no warranties, express or implied, with respect to the results of the data provided herein, regardless of its form or the means of its transmission.
- All existing survey data is based on, or reference from, 3rd Party information. Unless otherwise stated, all structural, mechanical, electrical information is based on, or reference from, 3rd Party data.
- © Crown Copyright 2019. All Rights Reserved.
- Ordnance Survey License 123456

Notes:

- To be read in conjunction with the (21)Series bay studies and details
- To be read in conjunction with the (20)Series plans, sections and elevations
- To be read in conjunction with the (22)Series plans, sections and elevations for Blockwork information
- To be read in conjunction with FMDC specification and SketchBook
- Refer to Reef information for cleaning & maintenance, loadings and layouts
- Refer to Structural Engineer's information for loadings
- Refer to Services information for location and number of services penetrations and outlets
- To be read in conjunction with the (27)Series plans and details
- To be read in conjunction with the (35)Series plans and details
- External pavement levels are taken from Townshend Landscape Architect drawing TOWN279.28.04(03)5002 rev 03
- To be read in conjunction with Specialist Lighting drawings for geometry and setting out of faceted tiles.



BENNETTS ASSOCIATES

1 Rawstone Place, London EC1V 7NL
T +44(0)207 5203300 • www.bennettsassociates.com
E mail@bennettsassociates.com
For Bennetts Associates' electronic information disclaimer - www.bennettsassociates.com/informationanddisclaimer/

Project
Kings Cross S3
Kings Cross Central Partnership Ltd

Drawing Title
Base Cladding Laneway Section Facing North

Drawing Number
KXC-S3-001-A- 2011-21-2101

Scale @ A3

Scale @ A1
As indicated

Project No. 2011

Suitability / Revision
A / 02

Revision Date
220505

YY MM DD