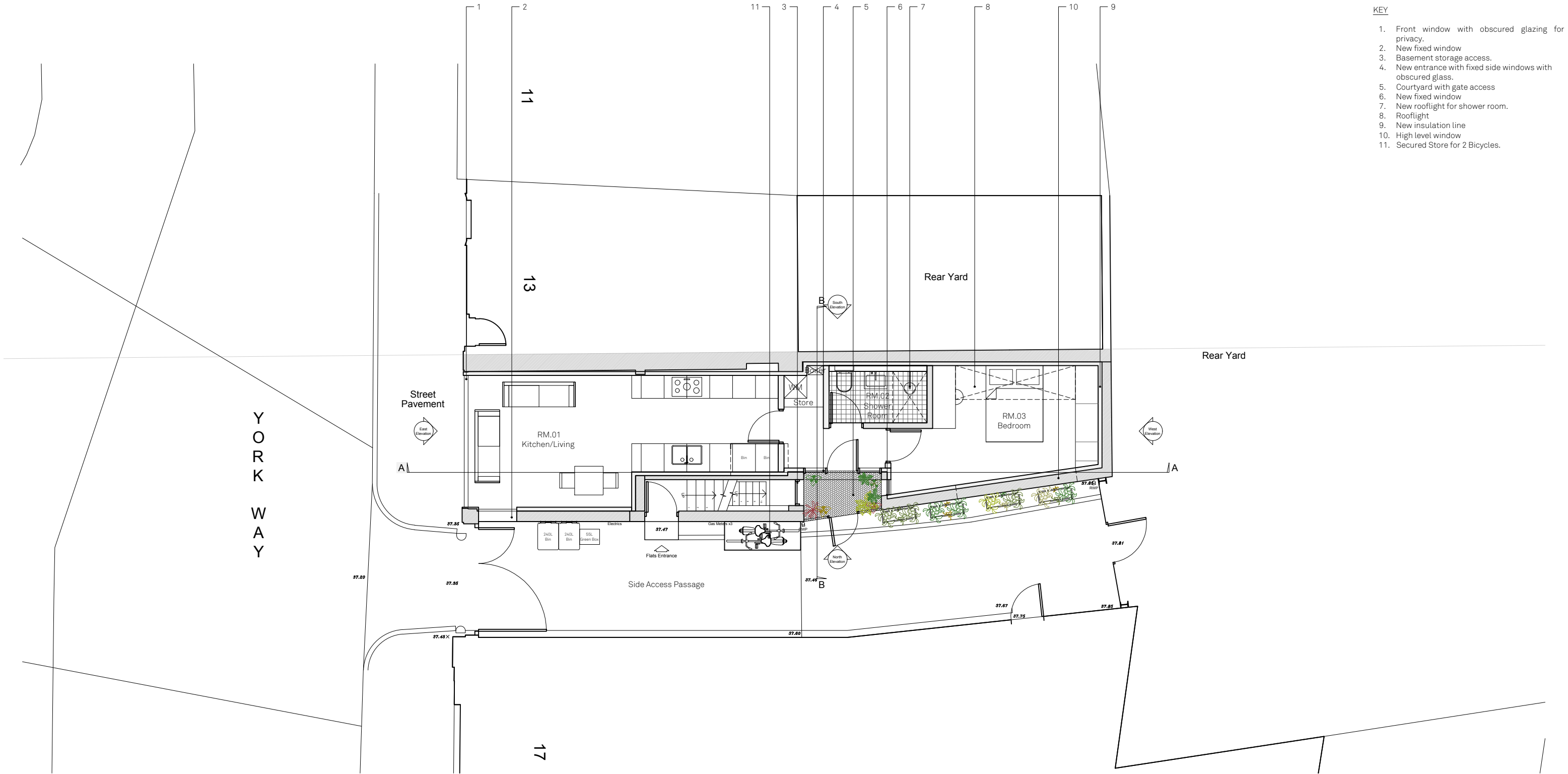


-	21/12/21	DS/BW	PLANNING - first issue
A	23/05/22	DS/BW	PLANNING APPLICATION
REV	DATE	DRAWN/CHK	DESCRIPTION

15 York Way
PR100 - revA PROPOSED GROUND FLOOR PLAN

21111 _ PLANNING _ Published 23/05/22



- KEY**
1. Front window with obscured glazing for privacy.
 2. New fixed window
 3. Basement storage access.
 4. New entrance with fixed side windows with obscured glass.
 5. Courtyard with gate access
 6. New fixed window
 7. New rooflight for shower room.
 8. Rooflight
 9. New insulation line
 10. High level window
 11. Secured Store for 2 Bicycles.



Scale 1:100 @ A3



North

Do not scale for construction. Use figured dimensions only. All discrepancies to be verified with architect prior to ordering or construction/execution. Confirm all setting out with architect prior to construction. Drawing to be read in conjunction with all other documents. Copyright Architecture for London.

Architecture for London
3-5 Bleeding Heart Yard
London EC1N 8SJ
020 3637 4236
architectureforlondon.com

**Architecture
for London.**