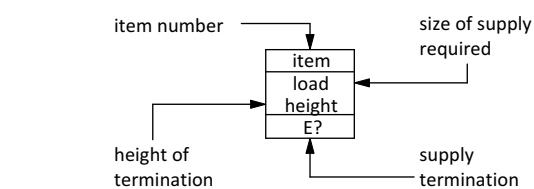


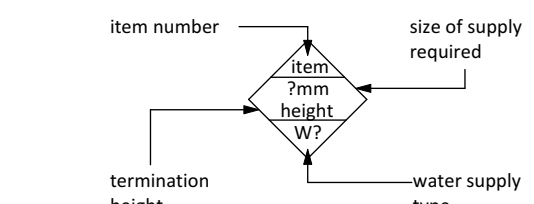
This drawing is to be read in conjunction with the existing R&D asbestos survey information.

ELECTRICAL LEGEND:



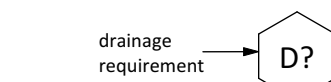
- Double 13 amp switched socket outlet.
 Single 13 amp socket outlet.
 13 amp switched fused spur with neon indicator feeding corresponding outlet or separate location specified.
 13 amp switched fused spur outlet with RCD/RCBO with neon indicator.
 1 phase isolator feeding corresponding command outlet or separate location specified.
 1 phase command outlet (switched if without separate isolator)
 3 phase isolator feeding corresponding command outlet or separate location specified.
 3 phase command outlet (switched if without separate isolator)
 Steel wire armoured cable (swa) minimum 2m tail (unless specified) hard wired to control panel.
 Steel wire armoured cable (swa) minimum 3m hard wired into counter mcb.
 Clean & dedicated 13amp supply for till.
 Run conduit to this point for phone / data connection, complete with back boxes.
 Electrical supply for onnet counter equipment to run via counter mcb (see services schedule for details of supply required or counter manufacturer)
 Fan speed controller.
 Full shut-off "deadman button" required at this point to isolate all non-essential electrical equipment.
 Fused spur with neon indicator required at this point to wire into appliance control box.
 This supply is to be 24hr maintained separate supply for keeping stock.
 This outlet is to be ip65 rated to prevent water ingress from jet wash cleaning.
 This supply and outlet is to be ip67 rated to prevent water ingress from submersion.
 Switched fused spur with neon indicator feeding lighting within the extract canopy & connected to the kitchen lighting circuit.
 Final connection of counter MCB to be completed by site electrician
 No provision has been made for convenience / cleaners sockets in addition to any labelled as "spare" on the drawing.
 All earth bonding termination points to be undertaken by the main contractor.
 The electrical contractor is required to supply all commands / bayonet plugs etc. for the outlets they provide / upgrade.

WATER SERVICES LEGEND:



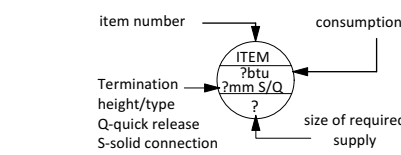
- W1 Cold mains (potable)
- W2 Cold water
- W3 Hot water
- W4 Softened cold water
- W5 Softened hot water
- W6 Conditioned cold mains water
- W7 Warm water @ 50°C to be connected to an electrostatic thermostat control pressure regulated 2-Bar
- Category - a
Requires a dedicated break tank with a class aa air gap to British Standards.
- Category - b
Requires a double check valve with inverted drain tap.
- Category - c
Requires check valve with inverted.
- W8 All water services to be terminated with a baloflex valve appropriate to the size of the pipework indicated
- All pipework is to be manufactured from copper and fixed back to the wall/substrate with metal brackets unless otherwise advised
- Conditioned water supplies with a high pH value may cause corrosion to copper pipe-work over a period of time. It may be recommended that plastic pipework be used in the instance of the plant being centrally located.

WASTE SERVICES LEGEND:



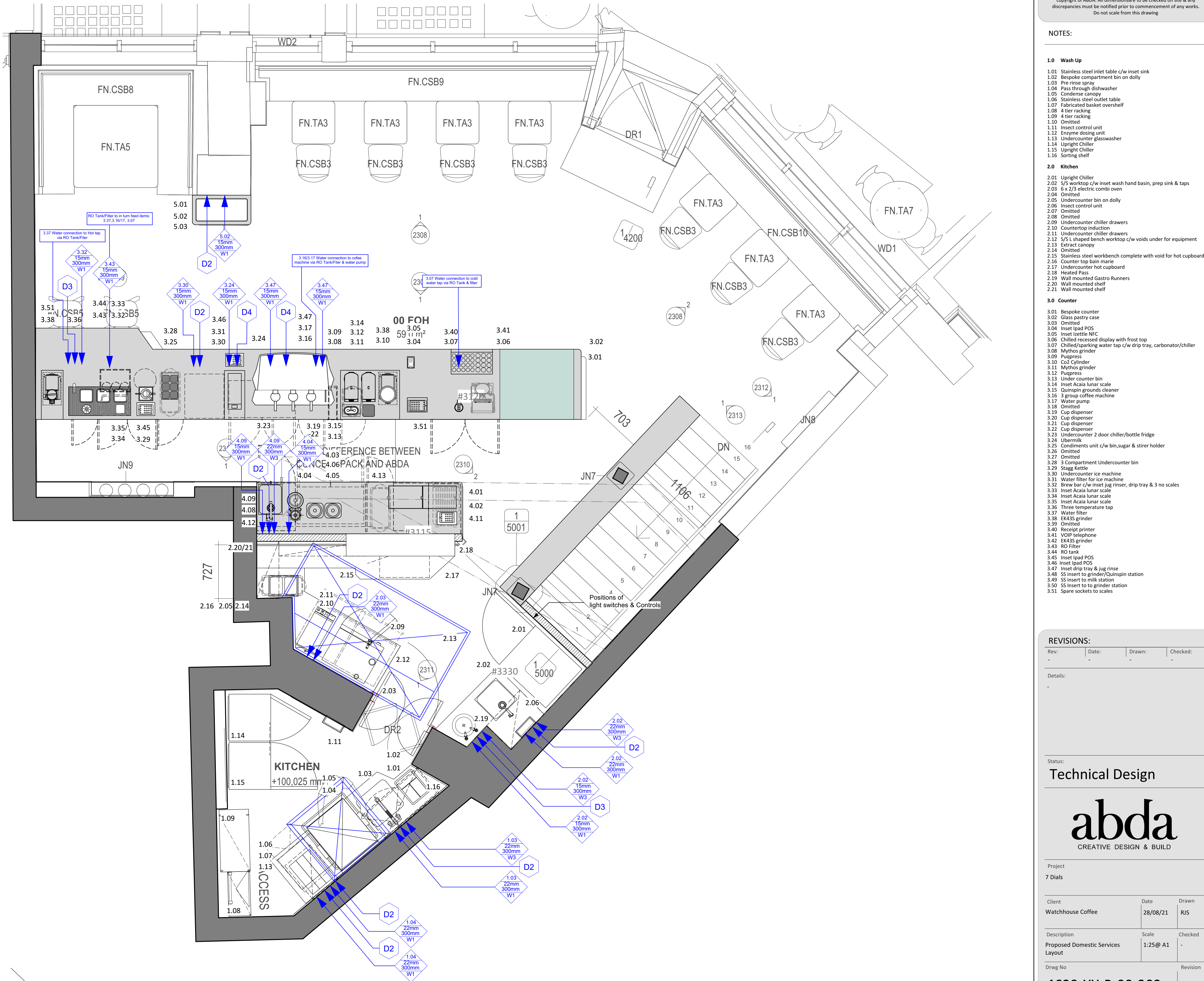
- | | |
|----|---|
| 01 | Trapped tundish draining into 54mm Copper pipe via Grease separator |
| 02 | 50mm spigot terminating 175mm affl. |
| 03 | 42mm spigot terminating 175mm affl. |
| 04 | 32mm spigot terminating 175mm affl. |
| 05 | 100mm Stub stack complete with or without air admittance valve or SVP vented externally to the approval of building control |
| 06 | Grease separation / treatment required in this drain. |
| 07 | Drain with u-rap & upstand |
| 08 | All drainage floats back to stub-joints to be manufactured from high temperature PVC with welded/glued joints unless otherwise agreed |
| 09 | Dishwasher wastes to be fitted out with black iron or uPVC due to the corrosive nature of wastes detergents on copper pipe-work. |
| 10 | All drainage to be installed & tested to be in 12056-2:2000 |
| 11 | Waste disposal units to run via dedicated trapped waste in accordance with BS EN 12056-2:2000 no less than 1:12 running to a larger bore as soon as practicable possible. |
| 12 | All drain runs connected to base build or pipe-work by others via swept bedding access "tee" for test purposes. |

WASTE SERVICES LEGEND:



Gas installation must be installed to BS6173 - 2001 and the extract / make up air fans servicing the kitchen canopies this is to be supplied and fitted by the main contractor.

All Gas supplies are to be connected to a gas solenoid valve and in turn connected to the BMS/Life safety systems with an independent emergency gas knock off button.



NOTES:

This drawing has been prepared for this project only and remains the copyright of ABDA. All dimensions are to be checked on site & any discrepancies must be notified prior to commencement of any works.
Do not scale from this drawing

1.0 Wash Up

- .01 Stainless steel inlet table c/w inset sink
- .02 Bespoke compartment bin on dolly
- .03 Pre rinse spray
- .04 Pass through dishwasher
- .05 Condense canopy
- .06 Stainless steel outlet table
- .07 Fabricated basket over shelf
- .08 4 tier racking
- .09 4 tier racking
- .10 Omitted
- .11 Insect control unit
- .12 Enzyme dosing unit
- .13 Undercounter glasswasher
- .14 Upright Chiller
- .15 Upright Chiller
- .16 Sorting shelf
- L.0 Kitchen**
- .01 Upright Chiller
- .02 5/5 worktop c/w inset wash basin, prep sink & taps
- .03 6 x 23 electric combi oven
- .04 Omitted
- .05 Undercounter bin on dolly
- .06 Insect control unit
- .07 Omitted
- .08 Omitted
- .09 Undercounter chiller drawers
- .10 Countertop induction
- .11 Undercounter chiller drawers
- .12 5/5 S shaped benchwork c/w voids under for equipment
- .13 Extract canopy
- .14 Omitted
- .15 Stainless steel workbench complete with void for hot cupboard
- .16 Counter top bain marie
- .17 Undercounter hot cupboard
- .18 Heated Pass
- .19 Wall mounted Gastro Runners
- .20 Wall mounted shelf
- .21 Wall mounted shelf

3.0 Counter

- 0.01 Bespoke counter
- 0.02 Glass pastry case
- 0.03 Omitted
- 0.04 Inset iPad POS
- 0.05 Inset Izzette NFC
- 0.06 Chilled recessed display with frost top
- 0.07 Chilled/icing water tap c/w drip trap, carbonator/chiller
- 0.08 Mythos grinder
- 0.09 Pugpress
- 0.10 Co2 Cylinder
- 0.11 Mythos grinder
- 0.12 Pugpress
- 0.13 Under counter bin
- 0.14 Inset Acaia lunar scale
- 0.15 Quinspin grounds cleaner
- 0.16 3 cup coffee machine
- 0.17 Water pump
- 0.18 Omitted
- 0.19 Cup dispenser
- 0.20 Cup dispenser
- 0.21 Cup dispenser
- 0.22 Cup dispenser
- 0.23 Undercounter 2 door chiller/bottle fridge
- 0.24 Undermints
- 0.25 Chemical unit c/w bin,sugar & stirrer holder
- 0.26 Omitted
- 0.27 Omitted
- 0.28 3 Compartment Undercounter bin
- 0.29 Stag Kettle
- 0.30 Undercounter ice machine
- 0.31 Water filter for ice machine
- 0.32 Brew bar c/w inset jug rinser, drip tray & 3 scales
- 0.33 Inset Acaia lunar scale
- 0.34 Inset Acaia lunar scale
- 0.35 Inset Acaia lunar scale
- 0.36 Three temperature tap
- 0.37 Water filter
- 0.38 EK435 grinder
- 0.39 Omitted
- 0.40 Receipt printer
- 0.41 VOIP telephone
- 0.42 EK435 grinder
- 0.43 RO filter
- 0.44 RO tank
- 0.45 Inset iPad POS
- 0.46 Inset iPad POS
- 0.47 Inset drip tray & jug rinser
- 0.48 SS insert to grinder/Quinspin station
- 0.49 SS insert to milk station
- 0.50 SS insert to to grinder station
- 0.51 Spare sockets to scales

REVISIONS:

Rev:	Date:	Drawn:	Checked:
-	-	-	-

Details:

Status:

Technical Design

abda
CREATIVE DESIGN & BUILD

Project

Dials

Client

Watchhouse Coffee

Description

Proposed Domestic Services

rwg No

4620 YV D 00 303

Chapel Studio Hall Lane, Little Brington, NN7 4HX

Tel: +44 (0) 01604 770 686

www.abdadesign.co.uk