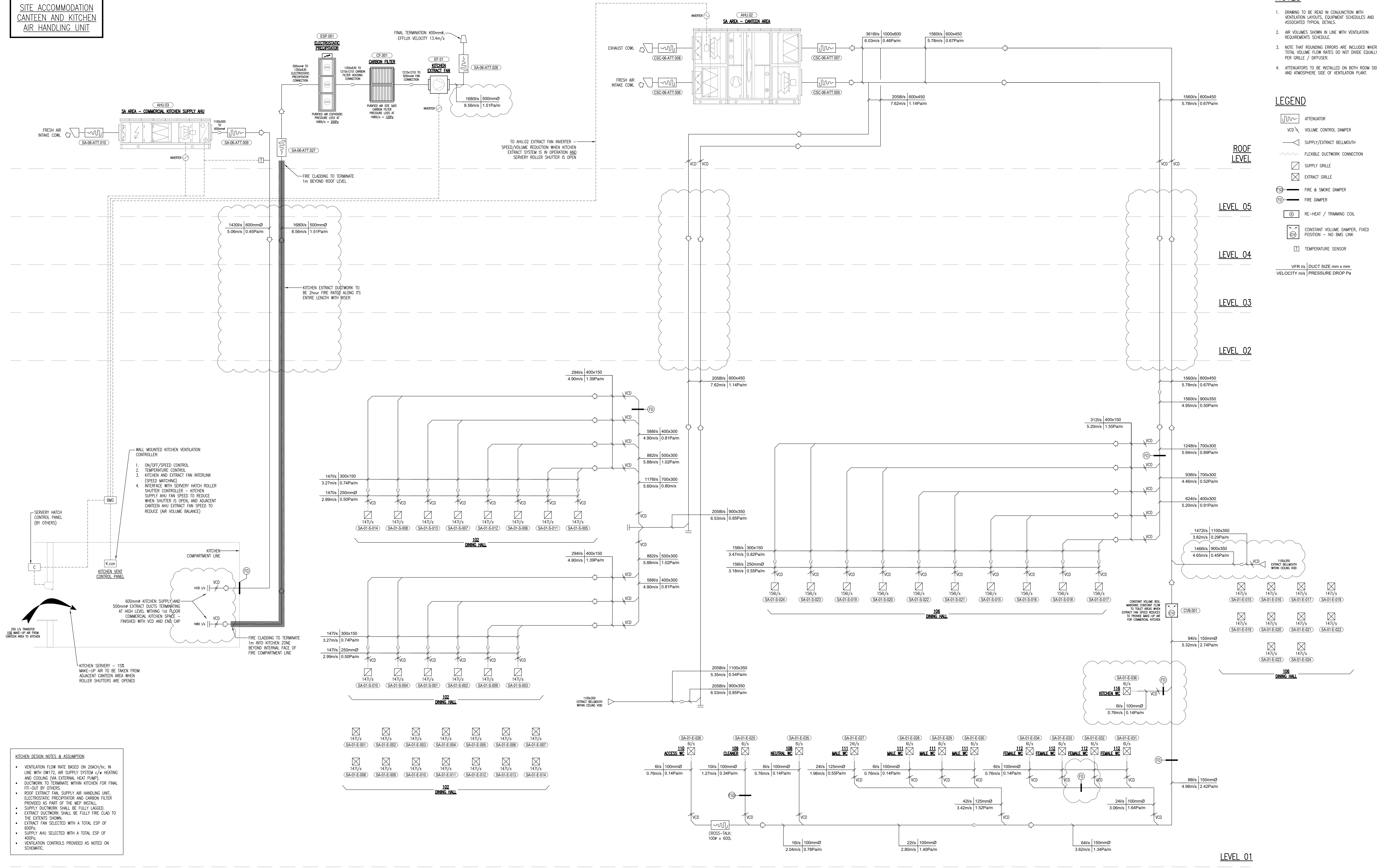


**SITE ACCOMMODATION  
CANTEN AND KITCHEN  
AIR HANDLING UNIT**

- NOTES**
- DRAWING TO BE READ IN CONJUNCTION WITH VENTILATION LAYOUTS, EQUIPMENT SCHEDULES AND ASSOCIATED TYPICAL DETAILS.
  - AIR VOLUMES SHOWN IN LINE WITH VENTILATION REQUIREMENTS SCHEDULE.
  - NOTE THAT ROUNDING ERRORS ARE INCLUDED WHERE TOTAL VOLUME FLOW RATES DO NOT DIVIDE EQUALLY PER GRILLE / DIFFUSER.
  - ATTENUATORS TO BE INSTALLED ON BOTH ROOM SIDE AND ATMOSPHERE SIDE OF VENTILATION PLANT.

- LEGEND**
- ATTENUATOR
  - VOLUME CONTROL DAMPER
  - SUPPLY/EXTRACT BELLMOUTH
  - FLEXIBLE DUCTWORK CONNECTION
  - SUPPLY GRILLE
  - EXTRACT GRILLE
  - FIRE & SMOKE DAMPER
  - FIRE DAMPER
  - RE-HEAT / TRIMMING COIL
  - CONSTANT VOLUME DAMPER, FIXED POSITION - NO BMS LINK
  - TEMPERATURE SENSOR
- VFR 1/s DUCT SIZE mm x mm  
VELOCITY m/s PRESSURE DROP Pa



- WALL MOUNTED KITCHEN VENTILATION CONTROLLER:**
- ON/OFF/SPEED CONTROL
  - TEMPERATURE CONTROL
  - KITCHEN AND EXTRACT FAN INTERLINK (SPEED MATCHING)
  - INTERFACE WITH SERVERY HATCH ROLLER SHUTTER CONTROLLER - KITCHEN SUPPLY AHU FAN SPEED TO REDUCE WHEN SHUTTER IS OPEN AND ADJACENT CANTEN AHU EXTRACT FAN SPEED TO REDUCE (AIR VOLUME BALANCE)

250 1/4 TRAYS  
250 WIND-UP AIR FROM  
CANTEN AREA TO KITCHEN

600mm<sup>2</sup> KITCHEN SUPPLY AND  
500mm<sup>2</sup> EXTRACT DUCTS TERMINATING  
AT HIGH LEVEL WITHIN 1st FLOOR  
COMMERCIAL KITCHEN SPACE -  
FINISHED WITH VCD AND END CAP

KITCHEN SERVERY - 15%  
MAKE-UP AIR TO BE TAKEN FROM  
ADJACENT CANTEN AREA WHEN  
ROLLER SHUTTERS ARE OPENED

- KITCHEN DESIGN NOTES & ASSUMPTION**
- VENTILATION FLOW RATE BASED ON 20ACH/HR, IN LINE WITH DW172, AIR SUPPLY SYSTEM c/w HEATING AND COOLING (VA EXTERNAL HEAT PUMP).
  - DUCTWORK TO TERMINATE WITHIN KITCHEN FOR FINAL FIT-OUT BY OTHERS.
  - ROOF EXTRACT FAN, SUPPLY AIR HANDLING UNIT, ELECTROSTATIC PRECIPITATOR AND CARBON FILTER PROVIDED AS PART OF THE MEP INSTALL.
  - SUPPLY DUCTWORK SHALL BE FULLY LAGGED.
  - EXTRACT DUCTWORK SHALL BE FULLY FIRE CLAD TO THE EXTENTS SHOWN.
  - EXTRACT FAN SELECTED WITH A TOTAL ESP OF 600Pa.
  - SUPPLY AHU SELECTED WITH A TOTAL ESP OF 400Pa.
  - VENTILATION CONTROLS PROVIDED AS NOTED ON SCHEMATIC.

CO1	PRELIMINARY ISSUE FOR COMMENT	MW	JB	MMc	HS2 accepts no responsibility for any circumstances which arise from the reproduction of this document after alteration, amendment or abbreviation or if it is issued in part or issued incompletely in any way.	
CO2	STAGE 4 ISSUE	MW	JB	MMc	© Crown Copyright and database right 2020. All rights reserved. Ordnance Survey Licence number 100049100. © Crown Copyright material is reproduced with the permission of Land Registry under delegated authority from the Controller of HMSO. This material was last updated on 2020 and may not be copied, distributed, sold or published without the formal permission of Land Registry. Only an official copy of a title plan or register obtained from the Land Registry may be used for legal or other official purposes.	
Rev	Description	Drawn	Checked	Approved	Con Acc	Scale with caution as distortion can occur.

Legend/Notes:

HS2

Registered in England  
Registration No. 06791686  
Registered office:  
2 Snow Hill, Queensway,  
Birmingham, B4 6GA

Official

Stage	4	Project/Contract	Euston Station	Creator/Originator	PREMIER MODULAR	Sub Originator	
Drawing Title	VENTILATION SCHEMATIC	Work Package Description	1200S03	Description/Function	MECHANICAL	System description	
Drawing No.	No.2	Drawn by	ET	Checked by	JB	Approved by	MMc
Scale	NTS	Size	A0	Suitability	S3	Date	07.09.21
Rev.	CO2	Drawn No.	1CP01-MDS_PML-ME-DSC-SS08_SL23-000004				