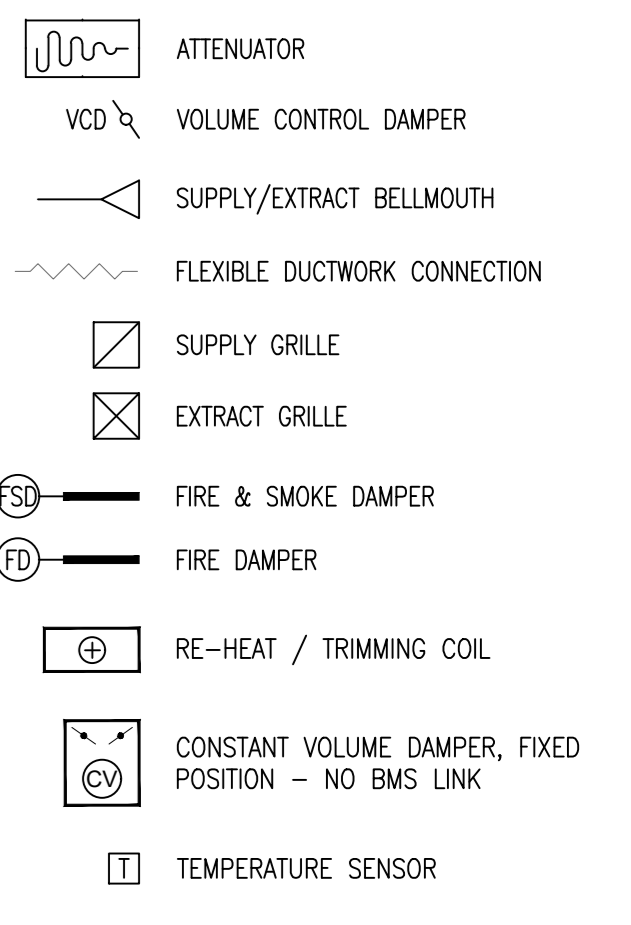


CONSTRUCTION SKILLS CENTRE AIR HANDLING SYSTEM

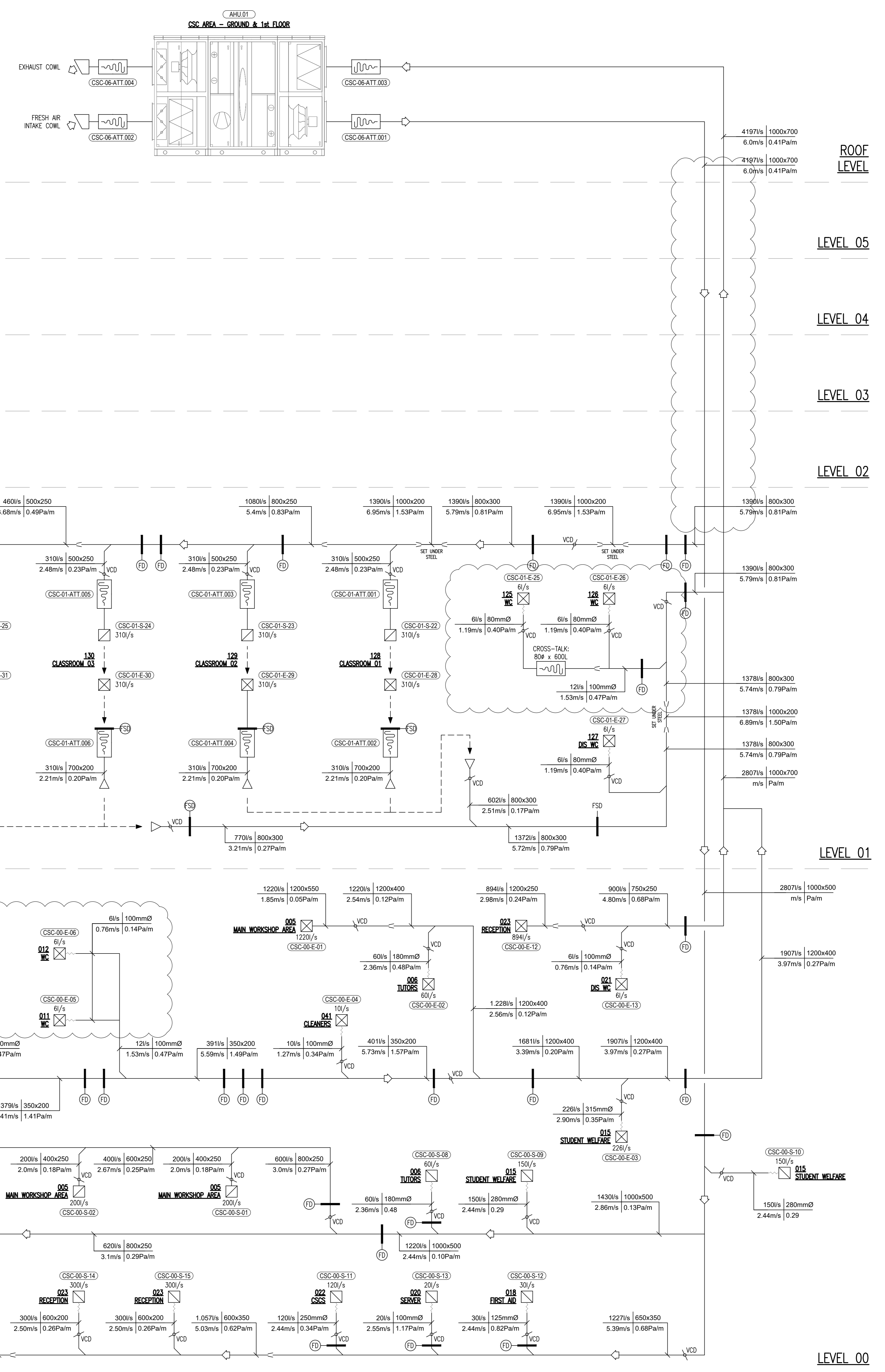
NOTES

- DRAWING TO BE READ IN CONJUNCTION WITH VENTILATION LAYOUTS, EQUIPMENT SCHEDULES AND ASSOCIATED TYPICAL DETAILS.
- AIR VOLUMES SHOWN IN LINE WITH VENTILATION REQUIREMENTS SCHEDULE.
- NOTE THAT ROUNDING ERRORS ARE INCLUDED WHERE TOTAL VOLUME FLOW RATES DO NOT DIVIDE EQUALLY PER GRILLE / DIFFUSER.
- ATTENUATORS TO BE INSTALLED ON BOTH ROOM SIDE AND ATMOSPHERE SIDE OF VENTILATION PLANT.

LEGEND



VFR l/s | DUCT SIZE mm x mm
VELOCITY m/s | PRESSURE DROP Pa



CO1	PRELIMINARY ISSUE FOR COMMENT	MW	JB	MMc	HS2 accepts no responsibility for any circumstances which arise from the reproduction of this document after alteration, amendment or abbreviation or if it is issued incompletely in any way.	Legend/Notes:
CO2	STAGE 4 ISSUE	MW	JB	MMc	© Crown Copyright and database right 2020. All rights reserved. Ordnance Survey Licence number 100049100.	
					© Crown Copyright material is reproduced with the permission of Land Registry under delegated authority from the Controller of HMSO.	
					This material was last updated on 2020 and may not be copied, distributed, sold or published without the formal permission of Land Registry. Only an official copy of a title plan or register obtained from the Land Registry may be used for legal or other official purposes.	
Rev	Description	Drawn	Checked	Approved	Con Act	Scale with cadastre as distortion can occur.

Stage	4	Project/Contract	Euston Station	Creator/Originator	PREMIER MODULAR	Sub Originator				
Drawing Title	Work Package Description	1200S03	Discipline/Function	MECHANICAL	System description					
Drawing Title	VENTILATION SCHEMATIC	No.1	Drawn by	ET	Checked by	JB	Approved by	MMc	Date	07.09.21
Scale	NTS	Size	A0	Suitability	S3	Rev.	CO2			
Drawing No. 1CP01-MDS_PML-ME-DSC-SS08_SL23-000003										



Official