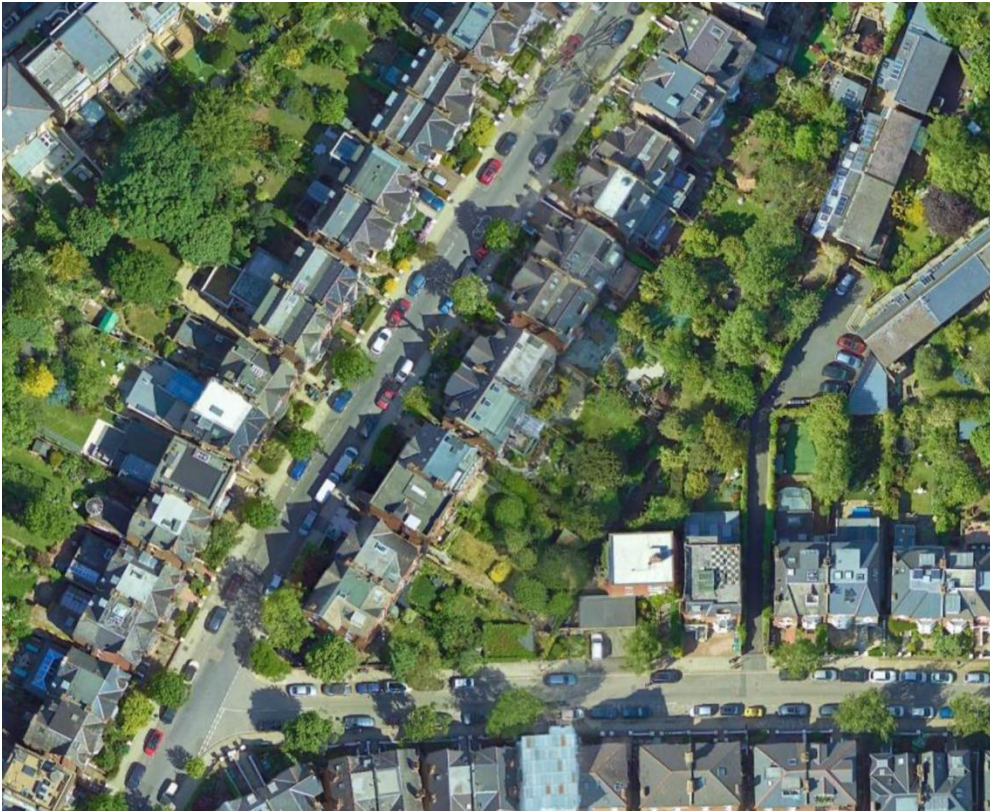


# Design Statement

32 Parliament Hill, London, NW3 2TN



Produced by Trail Studio Ltd

May 2022

**Project Details**

## **Address**

32 Parliament Hill, London, NW3 2TN

## **Relevant Previous Applications**

2016/1514/P	Granted
2019/6346/P	Appeal Decided

## **General description of scope of proposed works**

Planning permission has been granted for the creation of two balconies with metal railings, as noted and referenced in the Appeal Decision.

The proposed works is for the creation of two balconies, and replacing the planning approved metal railings with a visually unobtrusive alternative such as frameless glass.

Glass has been used extensively as an option for balustrading within the immediate context - please refer to the precedent section below for a brief overview. In past applications (such as 2011/3633/P) at 41-43 South Hill Park the Planning Officer remarked on the use of glass balustrading as:

*“The proposed terrace is to be screened by a lightweight floor mounted tempered laminated glass balustrade, obviating the need for handrails and thus minimising its visual impact.”*

It is a view that we share as well, considering the already approved loft dormer, its style and architectural aesthetic, that glass balustrades to the proposed balconies will minimise any visual impact.

## **Selection of some precedent in surrounding area**



41-43 South Park Hill



24 South Park Hill

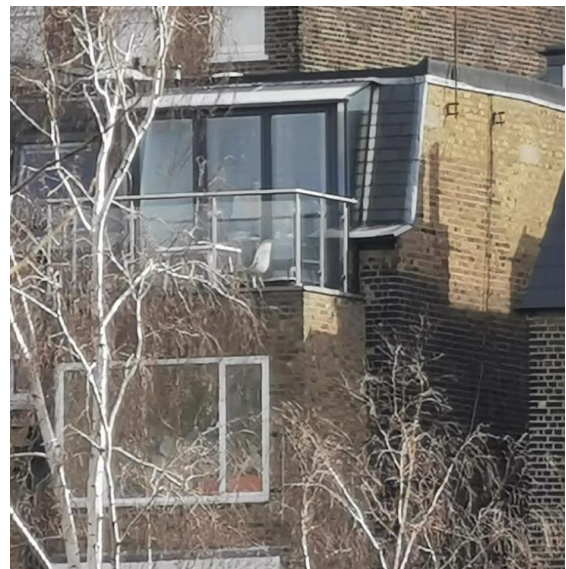




South Hill Park Road (facing onto the Heath)



72-76 South Hill Park Gardens



48 South Hill Park Gardens



20 Tanza Road