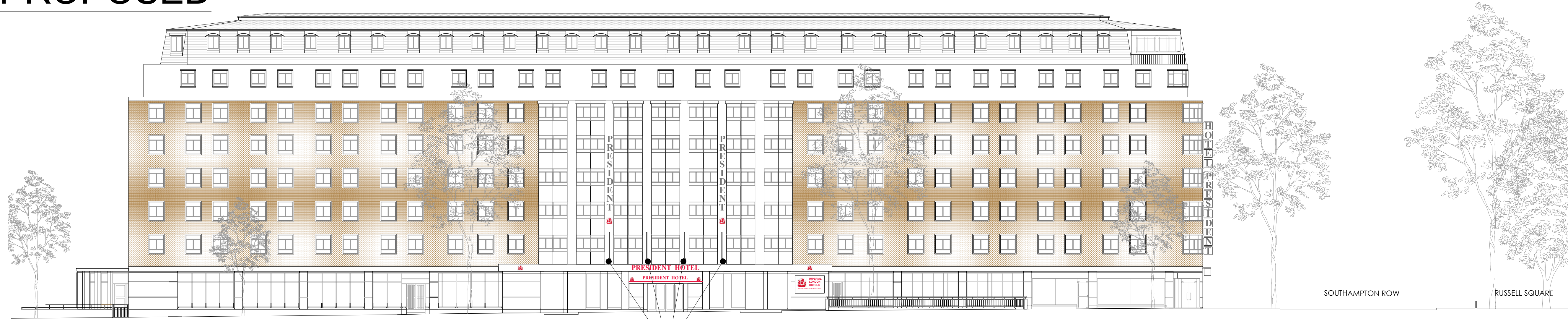


PROPOSED

This drawing must not be reproduced without permission.  
Do not scale from drawing.  
Contractor to check all dimensions on site.  
Report discrepancies to the architect.



1 ELEVATION - TO GUILFORD STREET  
Scale: 1:200 @ A1

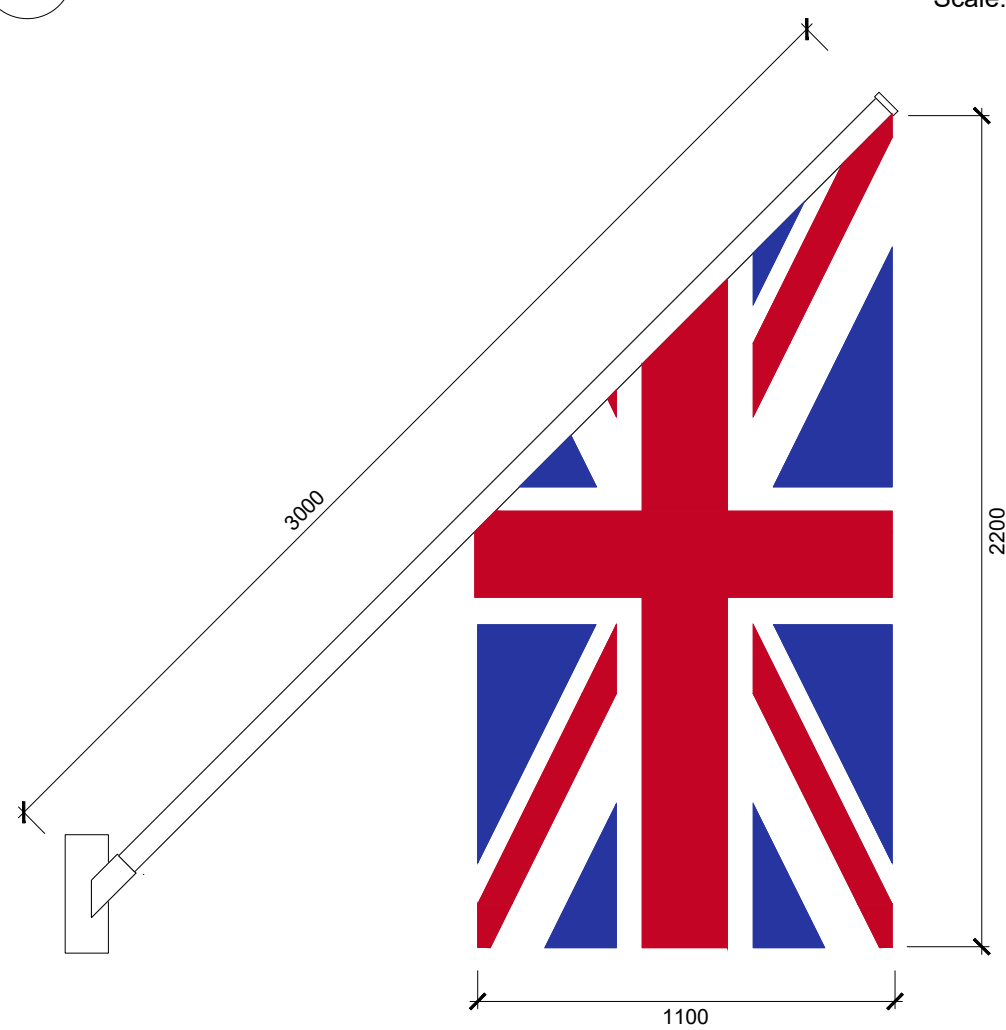
4# FLAGPOLES POSITIONED BETWEEN WINDOWS  
AT FIRST FLOOR LEVEL ABOVE EXISTING  
ENTRANCE CANOPY



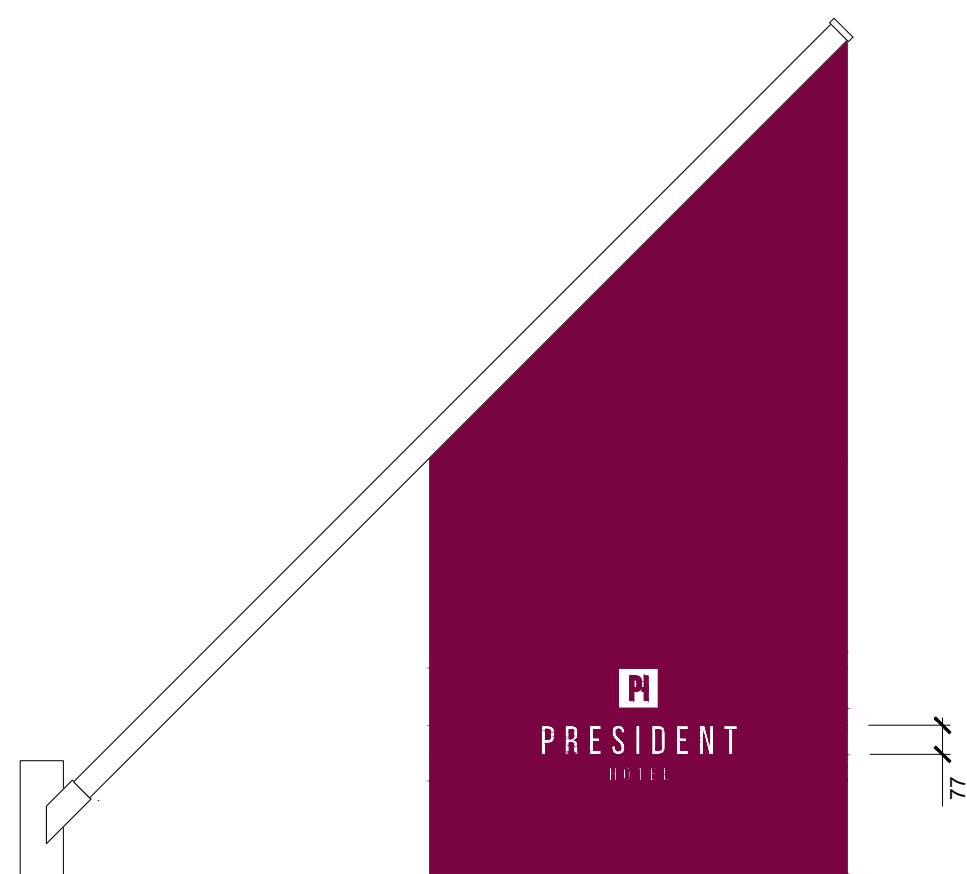
2 ELEVATION - TO RUSSELL SQUARE  
Scale: 1:200 @ A1



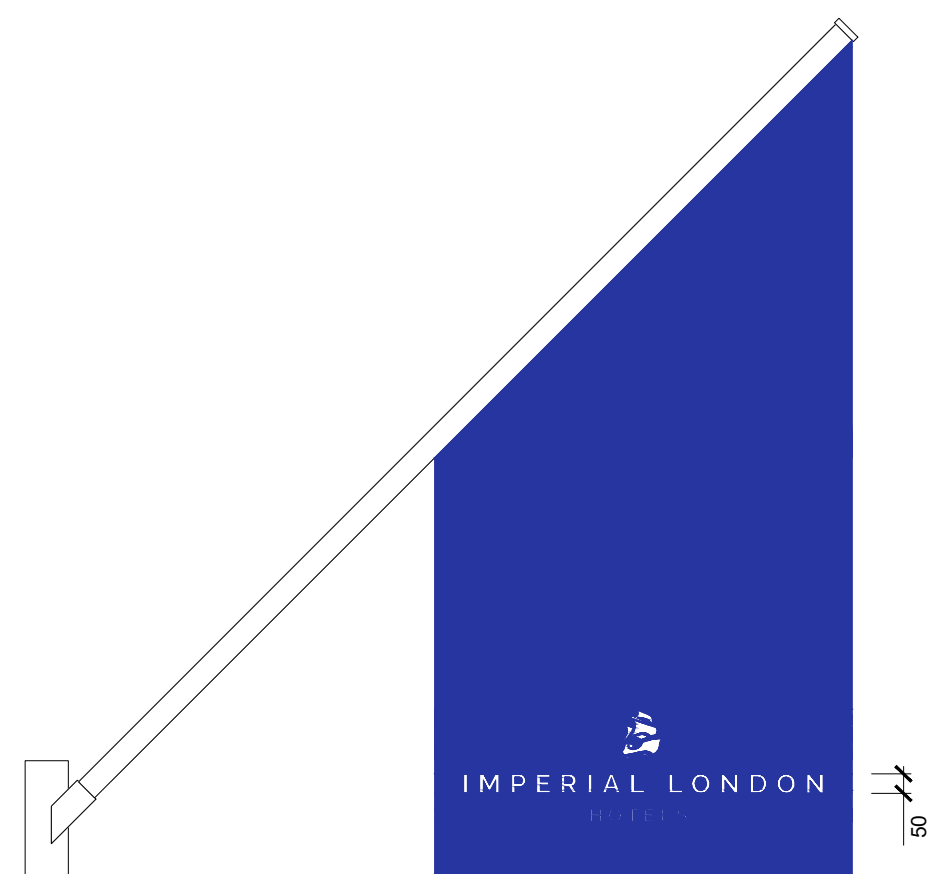
3 ELEVATION - TO QUEEN SQUARE  
Scale: 1:200 @ A1



4 FLAG 1 & 4  
Scale: 1:20 @ A1



5 FLAG 2  
Scale: 1:20 @ A1



6 FLAG 3  
Scale: 1:20 @ A1

01	Revise flags	06.12.2021	RvW
00	Issue for planning		
00	Comment	30.11.2021	RvW
rev	amendments	date	by

architects  
**ipa**  
55 Kingstown Street  
London NW1 8JP  
T + 44 (0) 20 7436 1133  
W ipa-architects.com

Project  
PRESIDENT HOTEL  
50-60 GUILFORD STREET  
LONDON  
WC1N 1DB

Drawing Title  
ELEVATIONS EXISTING

Drawing Status	
PLANNING	
Date	Drawn by
30.11.2021	RvW
Scale	
A1 @ 1:200	A3 @ 1:400
Drawing No.	Rev
21112.LO.200	01
Cad File	
21112.LO.001	
© IPA Architects: All rights reserved.	