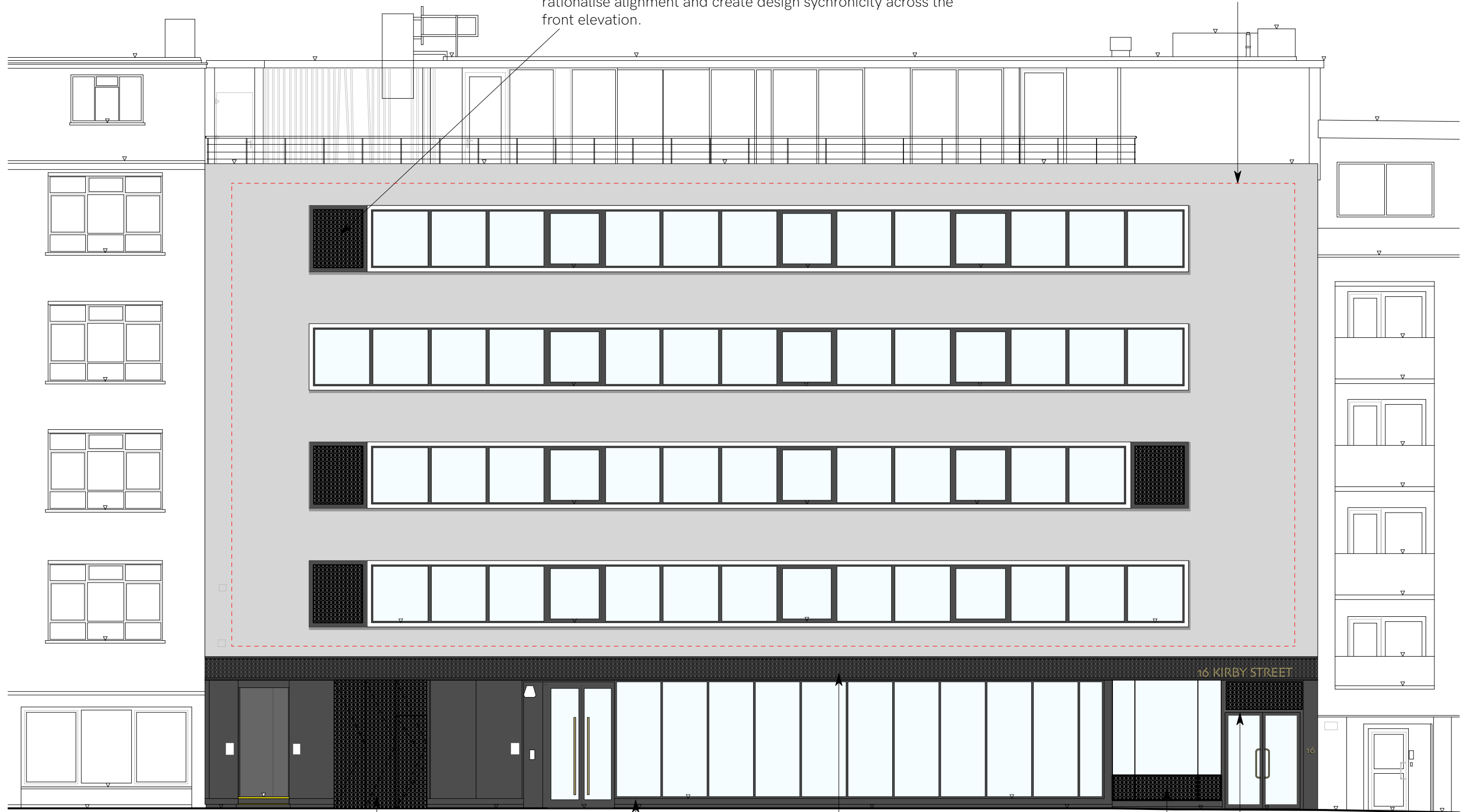


LEGEND

LEGEND

Textured metal panels added to fenestration bands to rationalise alignment and create design synchronicity across the front elevation.

Existing perimeter banding removed



Existing cycle store doors replaced with bi-fold doors with separate openable single panel for pedestrian use. Finished in textured metal panelling to match panel details.

Existing framing sprayed to match fenestration and doors in anthracite

New horizontal 'I-beam' metal banding with textured metal inset to highlight ground level and create distinction from upper floors.

Entrance to upper level offices  
- New entrance doors with thin profile anthracite frame and brass finish handles  
- Textured metal panel installed over door  
- Textured metal panels to create robust plinth and conceal stairs  
- Existing frame sprayed in anthracite  
- Solid brass lettering signage to highlight office entrance

