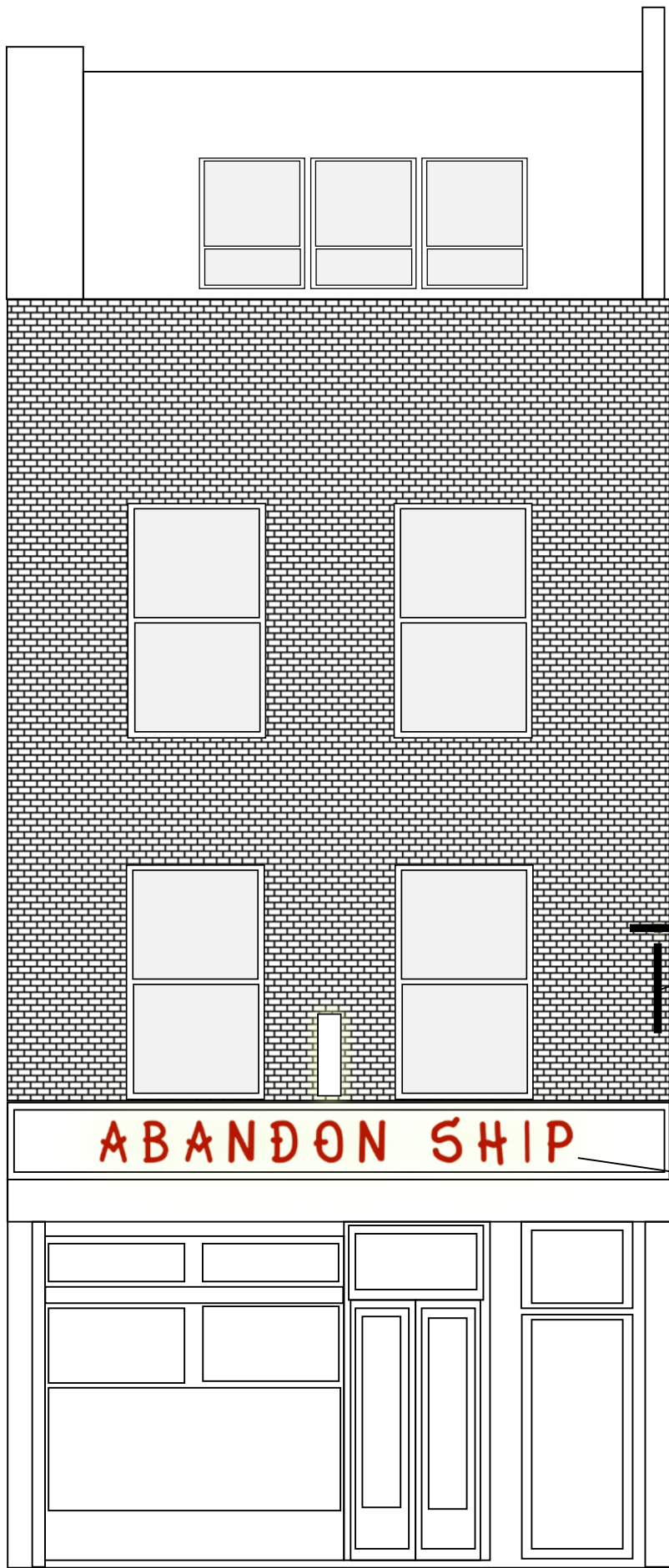
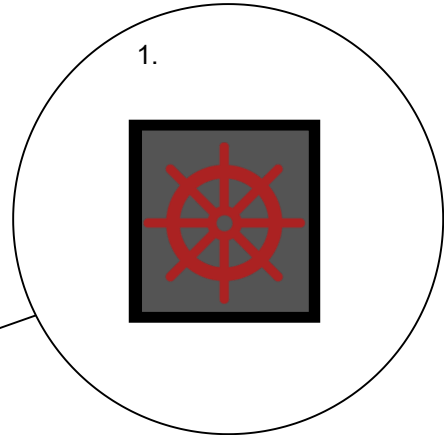


Existing Signage



Proposed Signage



2

- Proposed Lit Signage
- 1. Red neon lettering with 30mm projection fixed to upper facade.
 - 2. 2 x red neon ship wheel mounted with 30mm projection fixed to existing projecting sign.

Site:	63 Neal Street, London, WC2H 9PJ	Drawing:	0002	Project:	0000416	Drawn:	A Carleton		
Title:	External Signage	Scale:	1:500	Date:	23/05/2022	Rev:	A		