

LONDON BOROUGH OF CAMDEN
 PLANS APPROVED
 10 MAY 1972
 ON BEHALF OF THE COUNCIL

- NOTES**
- 1 No deviation may be made from the details shown on this drawing without prior permission of the architects. Any discrepancy found between this drawing and any other document should be referred immediately to the architects. IF IN DOUBT, ASK.
 - 2 No dimensions to be scaled from this drawing.
 - 3 This drawing is to be removed from currency immediately a revised version is issued.

REVISIONS

date	description
A 16.1.72	cellars added to drawing location plan added
B 10.2.72	Partia. Camsh. Basement

G.P.P./N/A & C
 1/5
 (R)

Robert Maguire & Keith Murray
 architects
 63 Kew Green Richmond Surrey
 01-940 8278

job 7 BEDFORD PLACE WC1
 STUDENT HOSTEL

title BASEMENT and GROUND
 DRAINAGE
 FLOOR CONVERSION

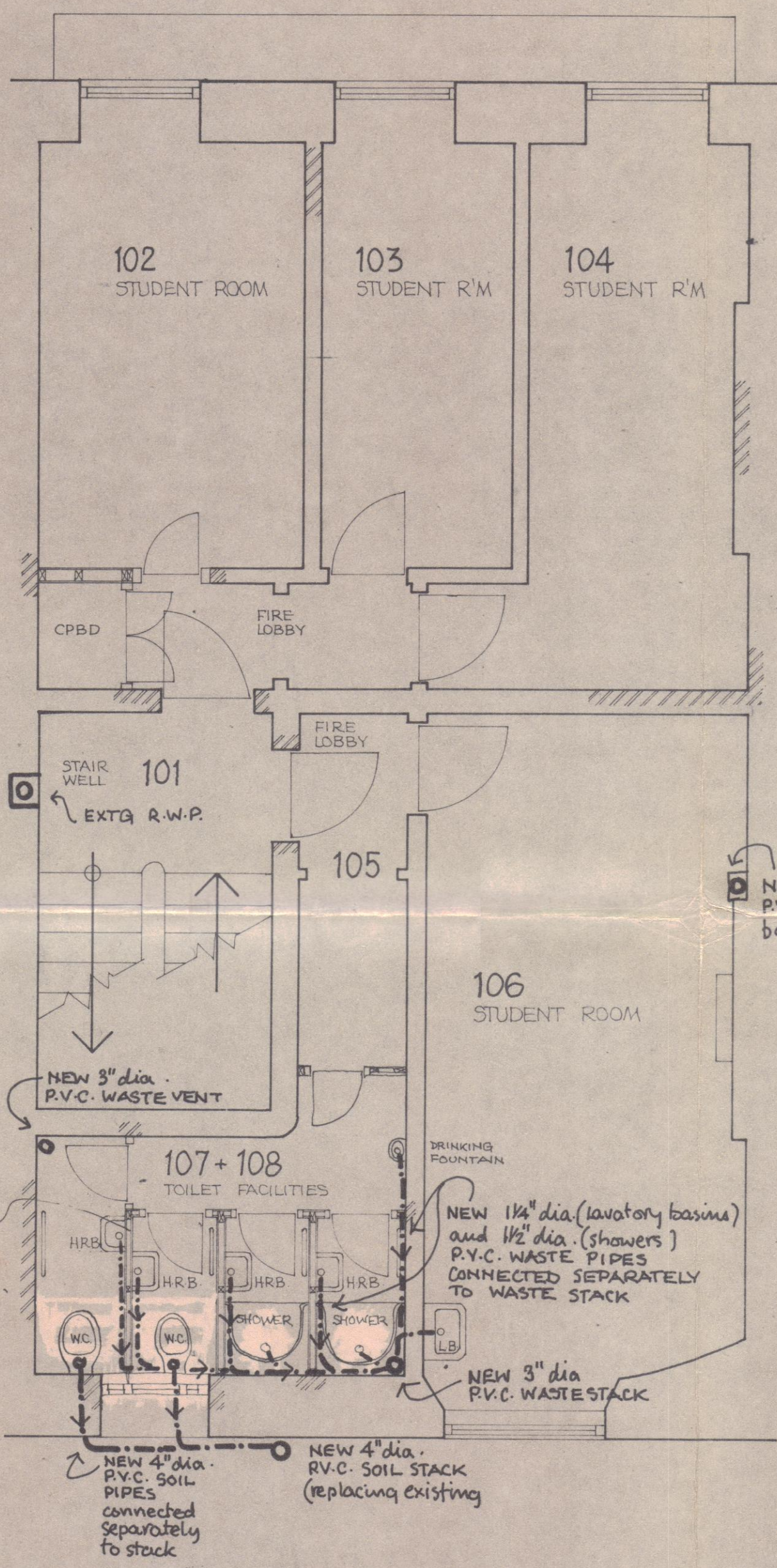
scale 1/4" to 1'-0" scale

date 16 NOVEMBER 1971

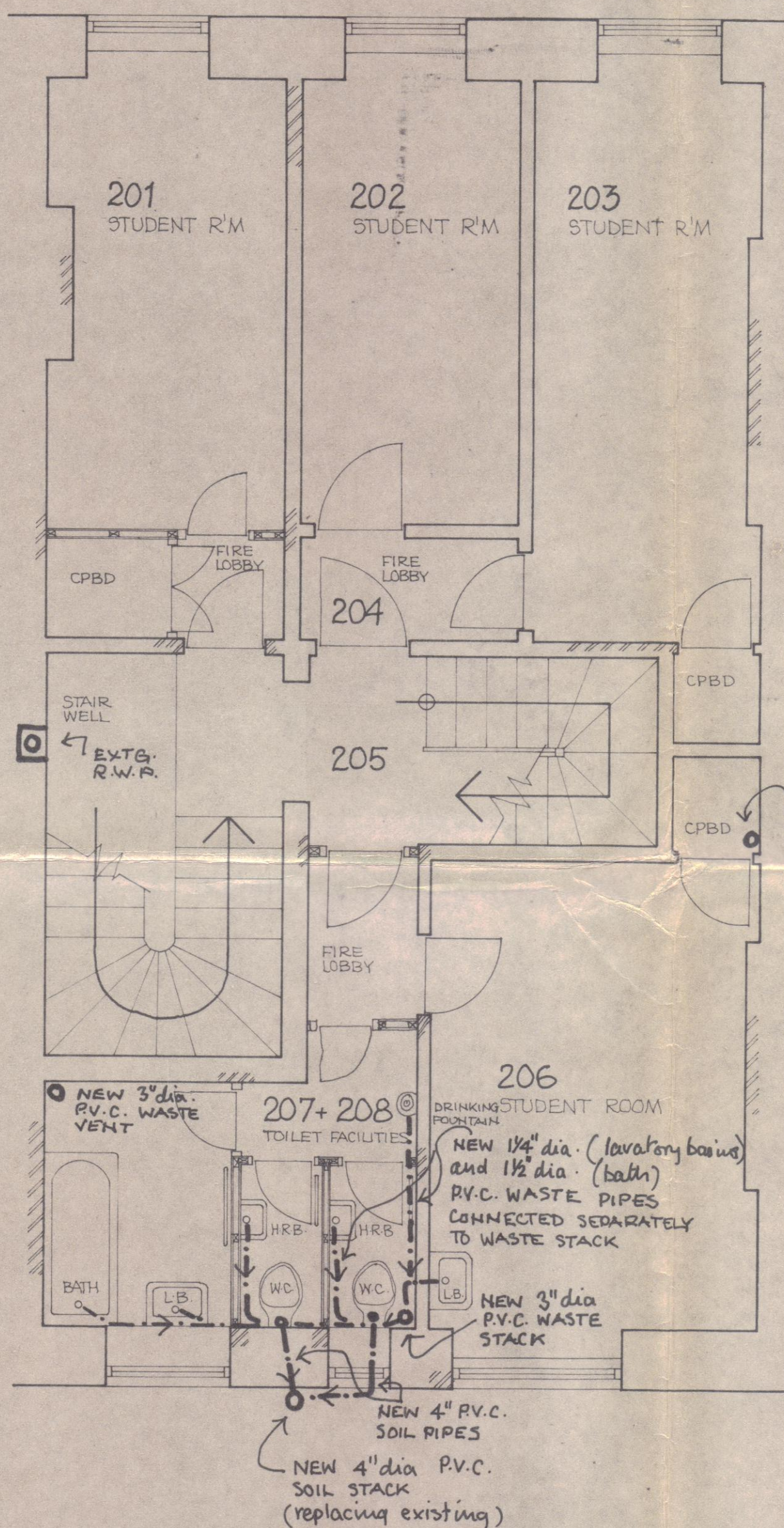
no BED 600
 A.B

NOTES

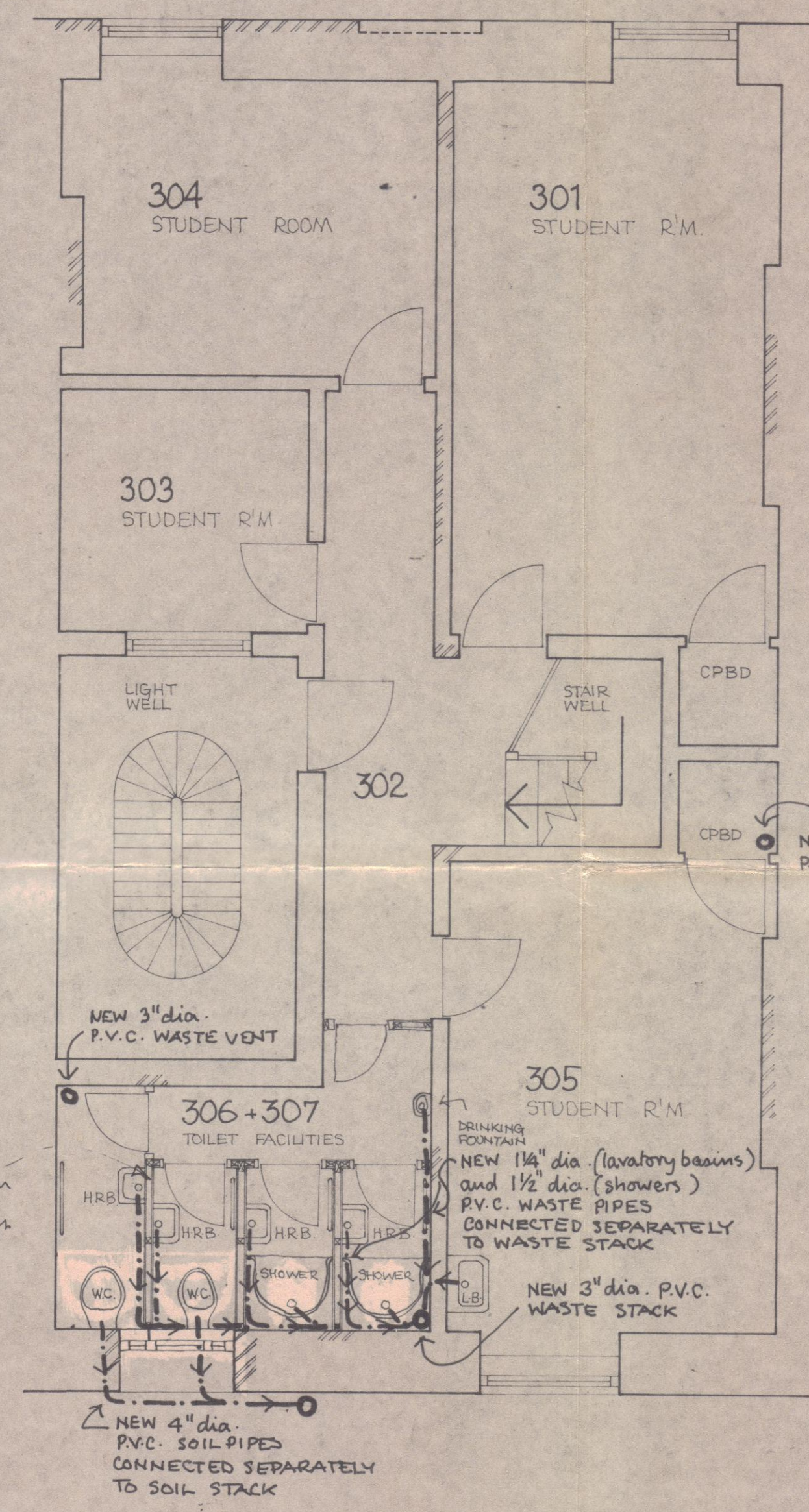
- 1 No deviation may be made from the details shown on this drawing without prior permission of the architects. Any discrepancy found between this drawing and any other document should be referred immediately to the architects. IF IN DOUBT, ASK.
- 2 No dimensions to be scaled from this drawing.
- 3 This drawing is to be removed from currency immediately a revised version is issued.



FIRST FLOOR PLAN 1/4" to 1'-0" scale



SECOND FLOOR PLAN 1/4" to 1'-0" scale



THIRD FLOOR PLAN 1/4" to 1'-0" scale

REVISIONS

date	description
A 10/22	fontain height level 1 & 3.

GTP/N/4 / 8 / e / 380 / HS

Robert Maguire & Keith Murray architects 63 Kew Green Richmond Surrey 01-940 8278	
job	7 BEDFORD PLACE W.C. STUDENT HOSTEL
title	1 st , 2 nd and 3 rd FLOOR DRAINAGE CONVERSION PLAN
scale	1/4" to 1'-0" scale
date	JANUARY 1972
no	BED 601