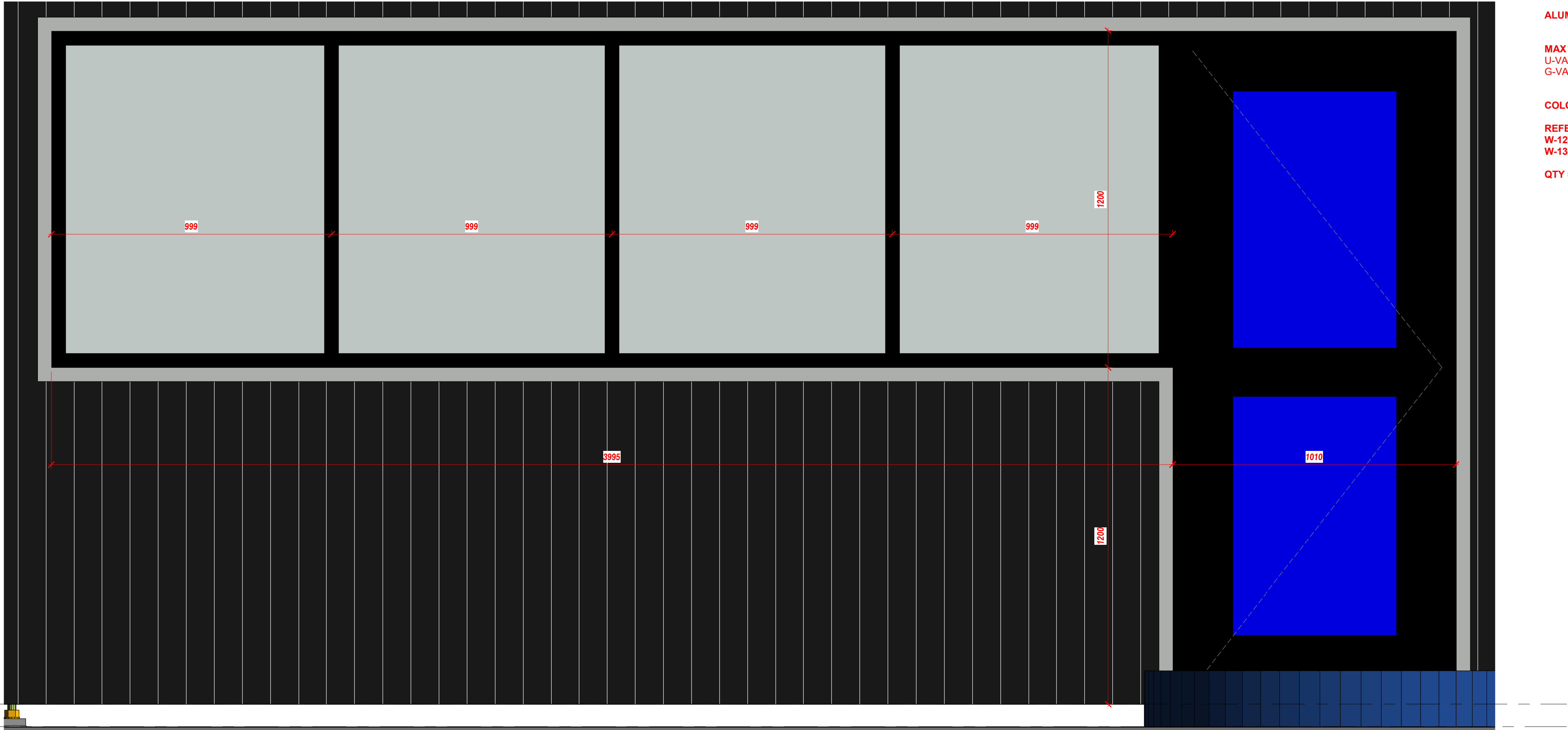


LEVEL 0
25.080 m
A

T.O.F
25.000 m
A



ALUMINIUM DOOR AND WINDOW SYSTEM

MAX FORDHAM SPEC:
U-VALUE 1.4 / 0.4G
G-VALUE TO ALLOW OMMISON OF SOLAR SHADING

COLOUR RAL 9017

REFERENCES:
W-12 & DOOR EX-019
W-13 & DOOR EX-020

QTY = 2No WITHIN TRADITIONAL BUILD

C01	PLANNING ISSUE	10.05.22 DRP	10.05.22 TC	10.05.22 KP		HS2 accepts no responsibility for any circumstances which arise from the reproduction of this document after alteration, amendment or abbreviation or if it is issued in part or issued incompletely in any way.
						© Crown Copyright and database right 2020. All rights reserved. Ordnance Survey Licence number 100049190
						© Crown Copyright material is reproduced with the permission of Land Registry under delegated authority from the Controller of HMSO. This material was last updated on 2020 and may not be copied, distributed, sold or published without the formal permission of Land Registry. Only an official copy of a title plan or register obtained from the Land Registry may be used for legal or other official purposes.
Rev	Description	Drawn	Checked	Approved	Con App	Scale with caution as distortion can occur.

Legends/Notes:

HS2

OFFICIAL

Registered in England
Registration No. 06791686
Registered office:
2 Snow Hill, Queensway,
Birmingham, B4 6GA

Stage 5	Project/Contract EUSTON STATION	Creator/Originator PREMIER MODULAR	Sub-Originator
Drawing Title 1200S03	Work Package Description 1200S03	Discipline/Function ARCHITECTURAL	System Description
Drawing Title WINDOW ELEVATIONS SHEET 8	Drawn by DRP	Checked by TC	Approved by KP
Scale 1:10	Size A1	Suitability S3	Date 10.05.22
Drawing No. 1CP01-MDS_PML-AR-DEL-SS08_SL23-000009			Rev. C01