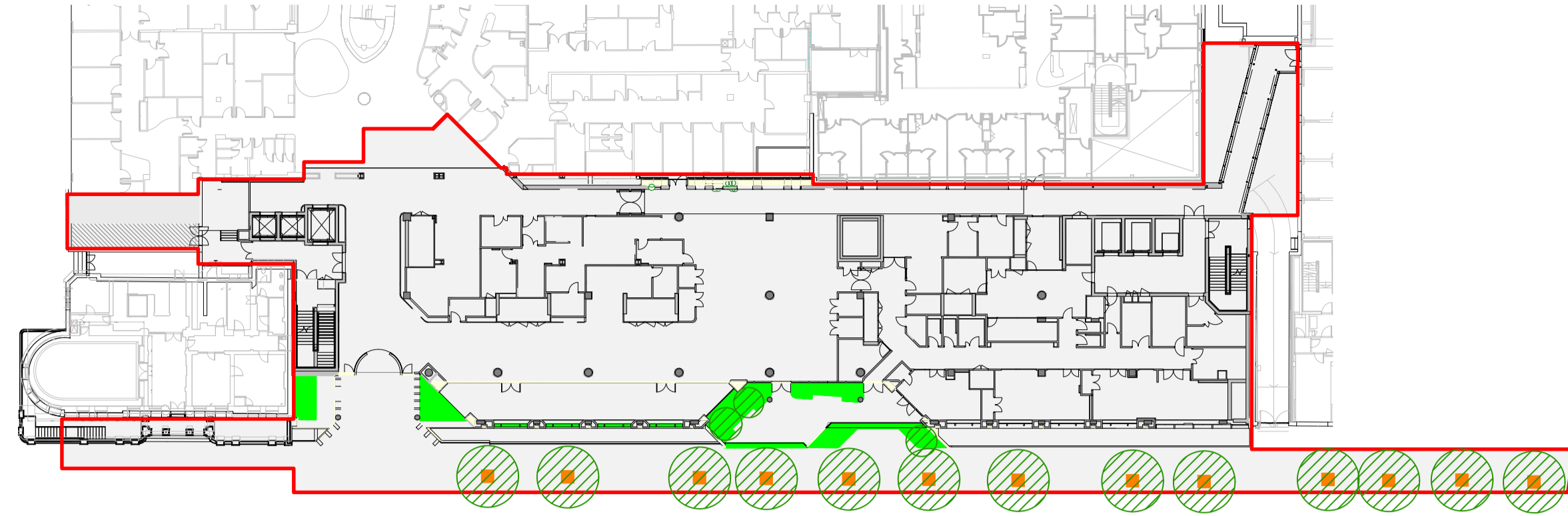
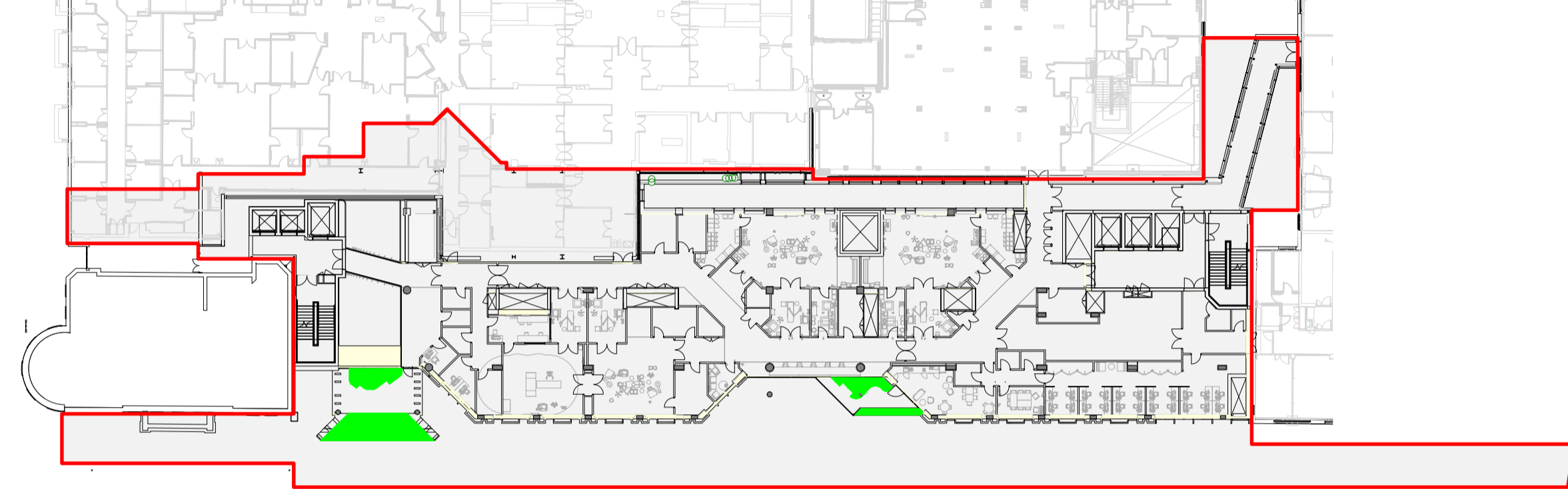


Level 02 - Scale @A1 = 1:500



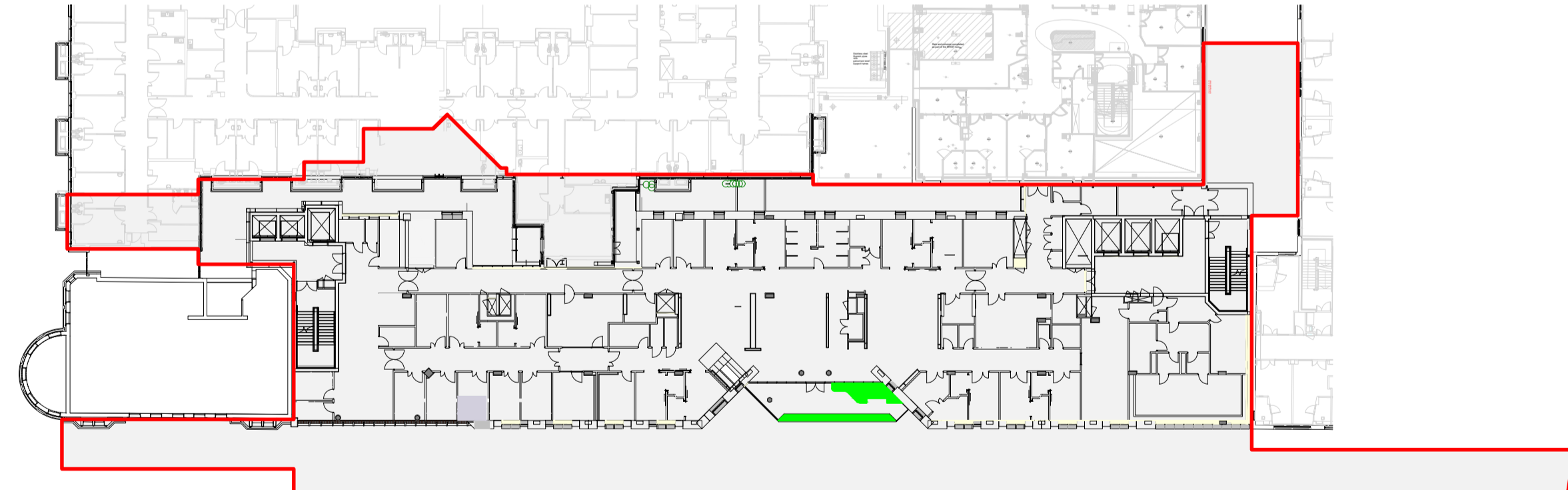
Level 03 - Scale @A1 = 1:500



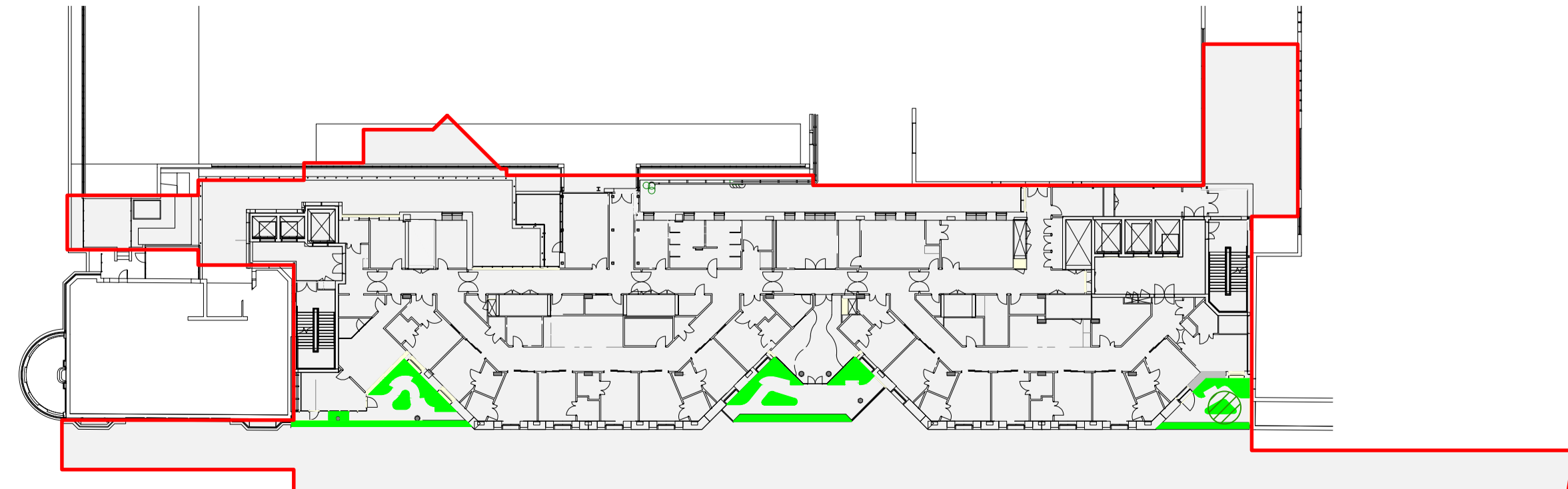
Level 04 - Scale @A1 = 1:500



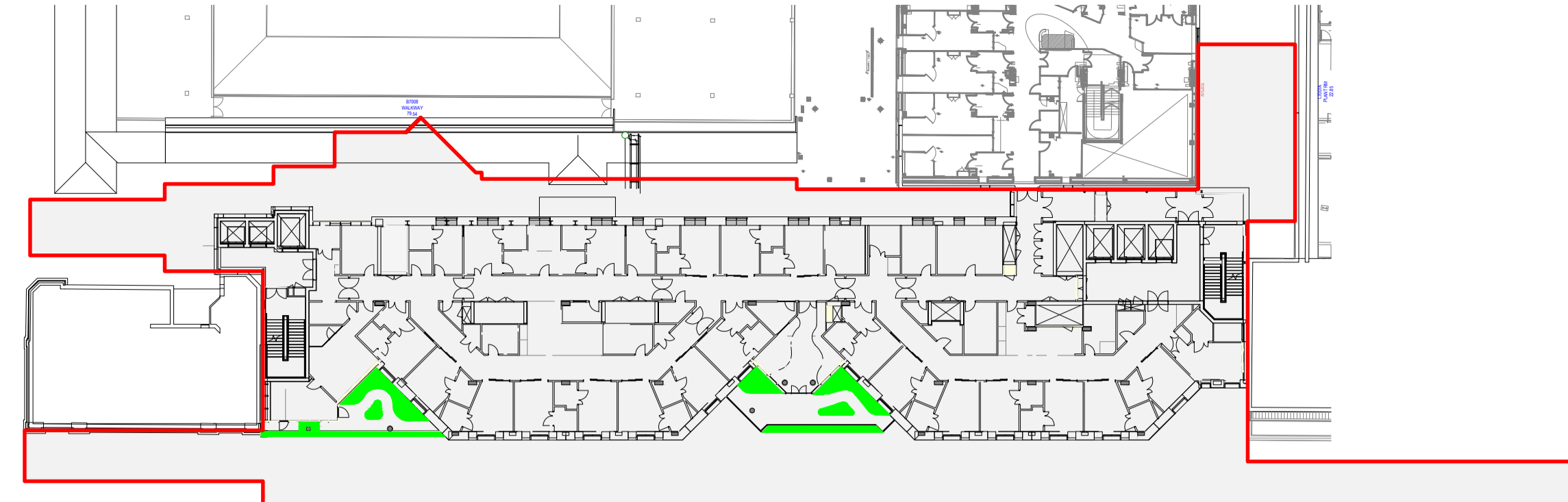
Level 05 - Scale @A1 = 1:500



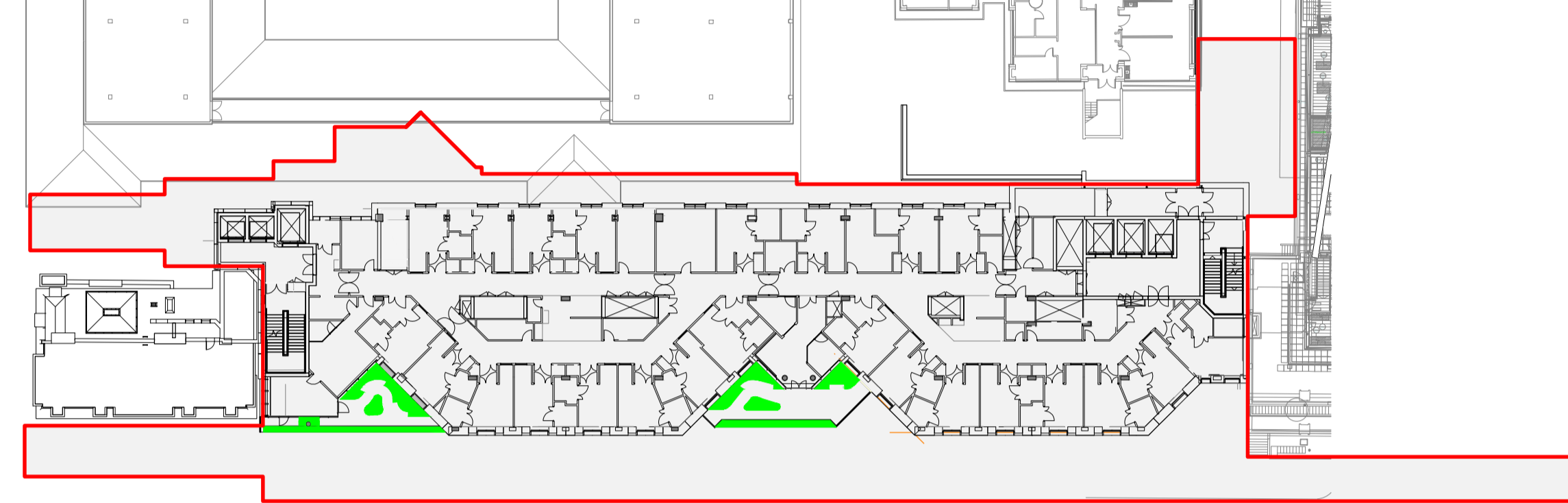
Level 06 - Scale @A1 = 1:500



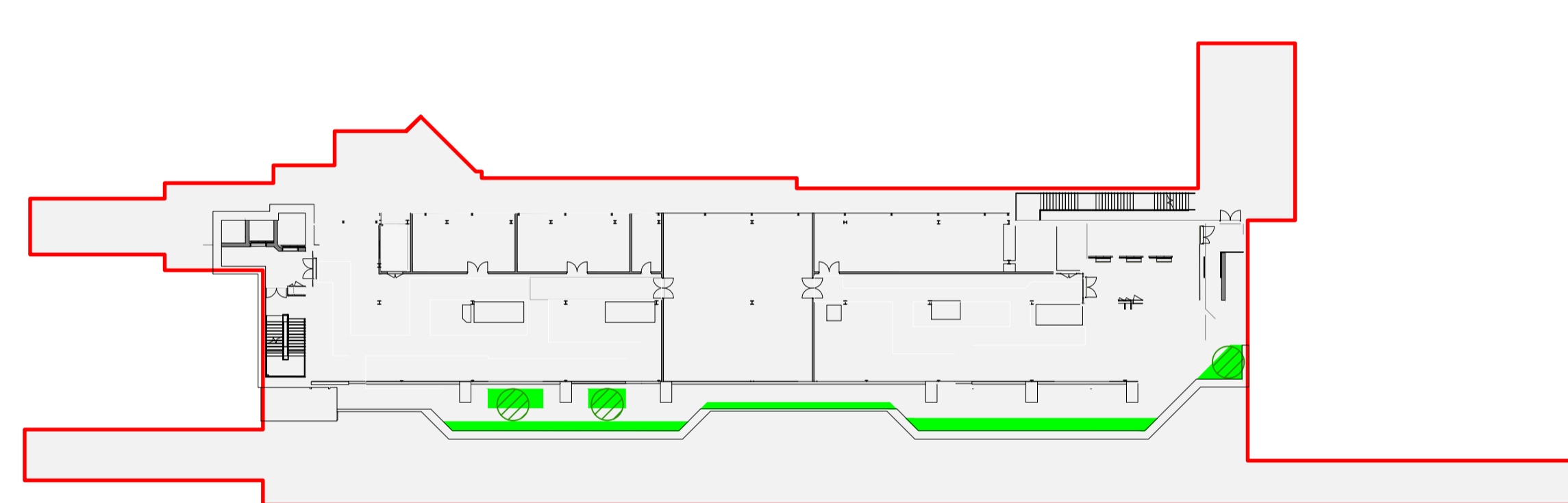
Level 07 - Scale @A1 = 1:500



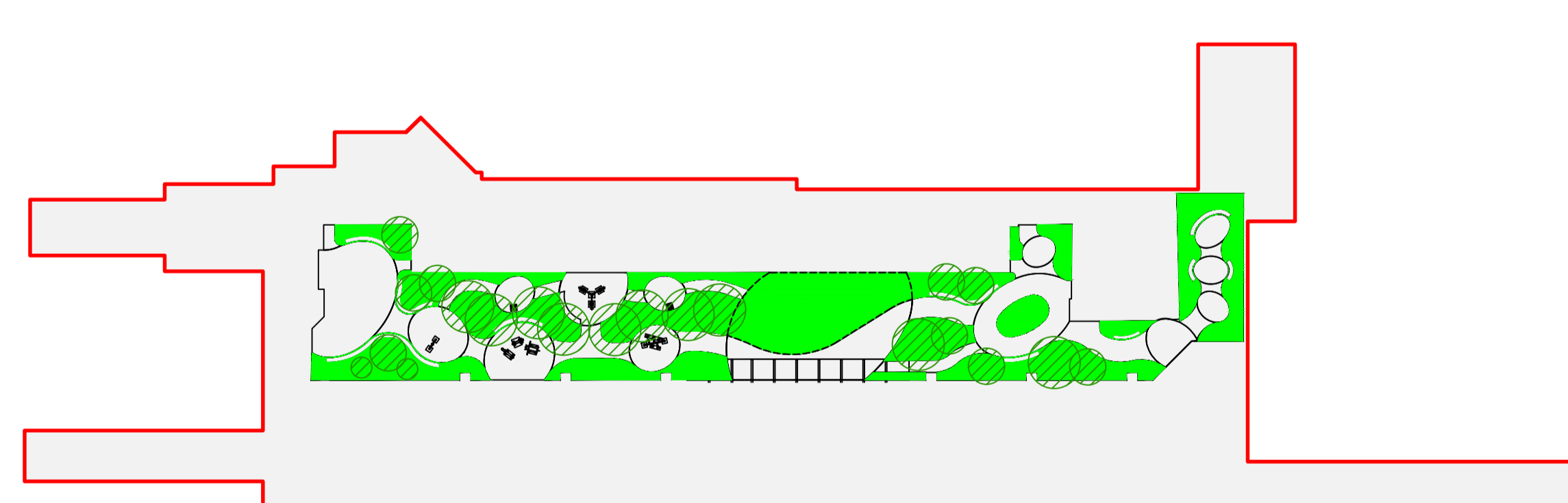
Level 08 - Scale @A1 = 1:500








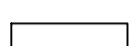
Level 09 - Scale @A1 = 1:500



Level 10 - Scale @A1 = 1:500



LEGEND

-  Site Boundary
-  Vegetation over structure
-  Standard trees
-  Tree pit (Permeable paving)
-  Sealed surface
-  Extents of amenity grass

The following files are referenced in this drawing:
 GOSHCCC-BDP-22-03-DR-L-9000-1303 Landscape Level 02.dwg
 GOSHCCC-BDP-22-03-DR-L-9000-1303 Landscape Level 03.dwg
 GOSHCCC-BDP-22-04-DR-L-9000-1304 Landscape Level 04.dwg
 GOSHCCC-BDP-22-05-DR-L-9000-1305 Landscape Level 05.dwg
 GOSHCCC-BDP-22-06-DR-L-9000-1306 Landscape Level 06.dwg
 GOSHCCC-BDP-22-07-DR-L-9000-1307 Landscape Level 07.dwg
 GOSHCCC-BDP-22-08-DR-L-9000-1308 Landscape Level 08.dwg
 GOSHCCC-BDP-22-09-DR-L-9000-1309 Landscape Level 09.dwg
 GOSHCCC-BDP-22-10-DR-L-9000-1310 Landscape Level 10.dwg
 GOSHCCC-BDP-22-22-DR-A-1000-1033.dwg
 (Please see original key for details)
 No dimensions are to be scaled from this drawing.

Urban Greening Factor Calculator				
Surface Cover Type	Factor	Area (m ²)	Contribution	Notes
Intensive green roof or vegetation over structure. Substrate minimum settled depth of 150mm.	0.8	795	636	Ornamental planting in raised planters over structures on various levels, amenity lawn (activity lawn) on level 10.
Standard trees planted in pits with soil volumes less than two thirds of the projected canopy area of the mature tree.	0.6	920	552	Tree canopy sizes based on information provided by plantpartner.co.uk and growing condition over structure.
Permeable paving. Sealed surfaces (e.g. concrete, asphalt, waterproofing, stone).	0.1 0	18.81 3541.19	1.881 0	unsealed surface around trees on main pavement. Total area within redline boundary is considered a sealed surface, as no penetrable ground in relation to planting areas, with exception to street trees on main pavement.
Total contribution			1189.881	
Total site area (m²)				3560
Urban Greening Factor				0.334236236

Rev. _____ First Issue 17/05/2022 Date: 17/05/2022
 Issue Details.

Client: John Sisk & Sons (Holdings) Ltd
 Project: GOSH Children's Cancer Centre
 Drawing Title: Urban Greening Factor Assessment
 Drawing No: 1050736_GOSHCCC_L_00
 Scale: 1:500 @A1
 Drawn by: MB Date: 17/05/22
 Checked by: DH Date: 17/05/22

© Crown copyright and database rights (2022). OS 0100058606
 For reference purposes only. No further copies may be made.

ADAS, 13d Park House, Milton Park,
 Milton, Abingdon, Oxford, OX14 4RS

Tel: 01235 355630

©RISK ADAS Ltd.

