

HORWITZ ASSOCIATES

Civil & Structural Engineering Consultants



About Us

Horwitz Associates are a firm of Civil & Structural Consulting Engineers based in Chelmsford. We provide designs, site inspections, surveys and reports on schemes ranging from residential houses to mixed commercial and residential developments and high rise towers covering the length and breadth of the country.

Landmark



St Marys Island



Established in 1995 by Richard Horwitz the company has completed over 2500 projects which include housing, residential and mixed-use developments, industrial buildings and warehousing, the conversion and refurbishment of listed buildings, and projects within the health and education sector.

The company has grown by maintaining its original values and aims which are to provide our clients with the highest levels of personal service. We offer a hands on approach whereby our Senior Managers maintain ongoing relationships with clients whilst supervising our team of professional engineers and technicians. This maintains that projects and production information are delivered to the highest standard that our clients and contractors have come to rely upon.

We continue to invest in design and 3D modelling software and Continued Professional Development enabling us to keep abreast of the latest technological advances to provide our clients with innovative solutions that add value and creativity to their development projects.

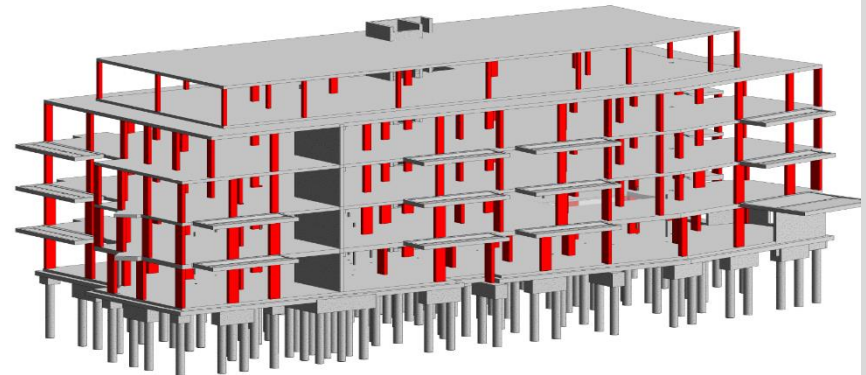
Located in modern offices in the City of Chelmsford we have access to the main rail networks into London Liverpool Street and Cross-rail, and main motorway networks.

Our Services

Horwitz Associates provide a wide range of civil and structural services for low medium and high rise residential developments, commercial developments and industrial plants. Our accomplished engineers and technicians are highly adept at, but not limited to, providing the following services:

Structural Solutions

- Site surveys and inspections of existing and new buildings for commercial developers.
- Reports and specifications for conversion and refurbishment projects for development.
- Outline proposals, scheme design and representative sketches, drawings and specifications for feasibility studies, concept design, building programming and cost analysis.
- Computer generated 2D and 3D models for buildings and structures in collaboration with other consultants.
- Structural analysis and design of buildings and specialist structures such as facades, canopies, staircases and shading services, using both traditional and modern structural materials.
- Working drawings packages for tender procurement for new buildings, conversion and restoration projects, including detailed drawings for reinforced concrete.



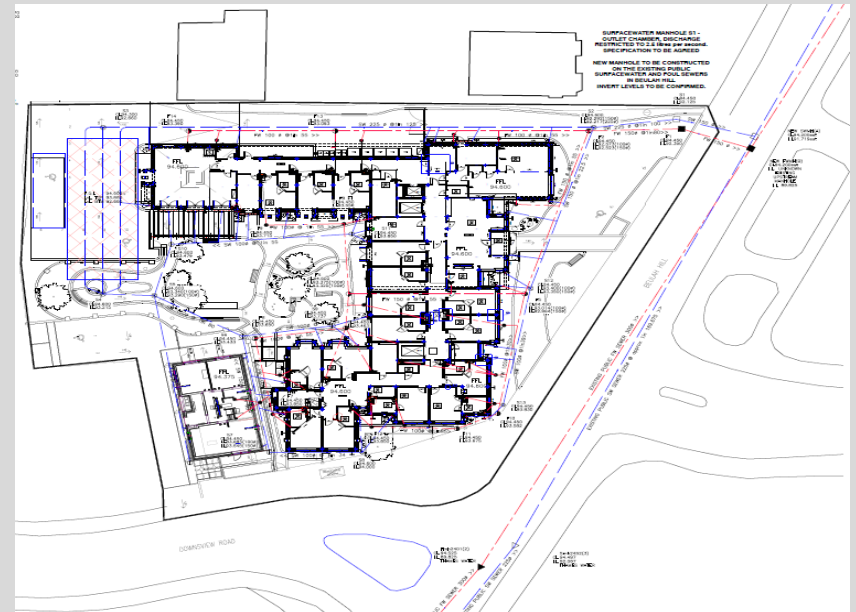
Foundation Engineering

- The provision of advanced foundation design for high rise structures and deep basements, assessment of foundation settlements using linear and non-linear analysis for short, medium and long term conditions.
- The assessment and compilation of design and production information for cellular raft foundations, sheet pile and contiguous piled basement construction, displacement and non-displacement piled foundations, trench fill and spread foundation.



Civil Engineering

- Design services for estate roads and sewers for adoption, private roads, surface water and foul drainage systems.
- Proposals for private and public owned highway works to meet Highways Authorities, Building Regulation and Planning Authority approval.
- Design production for sustainable urban drainage (SUDS), Code for Sustainable Homes (CfSH) and Sewers for Adoption Edition 7 (SFA 7).



Construction

- Advise lead consultants on finalisation of formal contract documents.
- Advise on the need for special inspections or tests required during construction.
- Attend relevant site meetings and make other periodic visits to the site as appropriate to the stage of construction.
- Monitor works in accordance with the contract documents.
- Provide As Built details on completion of works.



Portfolio



120 Vallance Road 2-4 Hemming Street

A large new build concrete frame scheme comprising four buildings made up of 144 residential apartments and modern citipads and commercial space. A communal roof terrace looks down on to a central piazza creating a sense of community.

Client - Higgins Homes Plc



Q - Peckham

New build development of 35 modern apartments comprising 1, 2 or 3 bedrooms and 4 penthouse suites.

Client - Higgins Homes



LandMark

A new contemporary residential development of 64 stylish apartments built above commercial units in Loughton Essex.

Client - Higgins Homes

Our team of skilled engineers and technicians are practiced in designing projects of varying size and complexity, working effectively with other design professionals and client project teams.



Norway Wharf

On the edge of the Limehouse cut canal, this High Rise, PT Floor, RC frame re-development scheme comprised 73 Apartments, a 12 storey tower with basement car parking facilities, adjacent to the Dockland Light Railway.

Client - Galliard Homes



Carlow House

The conversion of a former Edwardian warehouse to a development of 85 suites and 1 and 2 bedroom loft style luxury apartments, arranged around a magnificent 4 storey central atrium with a domed glass roof.

Client - Galliard Homes



Kewbridge Road

Former 18th Century Coaching Inn restoration project with additional new build RC frame structure and additional floor to existing structure to provide 35 1/2/3 bed high spec apartments.

Client - Albany Homes Ltd

We offer a hands on flexible approach to our clients with dedicated project teams, each led by a senior manager, ensuring a focused and committed service.



King Edward House

4-storey refurbishment project in Waltham Cross with upper floor apartments with private terrace.

Client - Galliard Homes



Cygnet Street

Redevelopment project of a car parking site to an RC frame, 8 storey development, comprising a two storey basement for mixed residential and commercial use.

Client - Galliard Homes



Ludgate Broadway

Conversion of a 13th Century period property to 9 Properties over 6 storeys. One of Galliard Homes Platinum Collection Developments.

Client - Galliard Homes

We utilise the most up to date design and 3D modelling software allowing us to collaborate as part of a wider multi-disciplinary team in the creation of intelligent shared models that facilitate the analysis and design of structures. (BIM Compatible).



Westminster Industrial

Located along the Thames Path between Greenwich and Woolich this development scheme includes new build high rise and conversion and extension of the 100 year old Victorian factory creating approx. 500 new homes and shops in the City.

Client - U + I PLC.



Soho Loop

Brownfield site regeneration project in Birmingham to comprise approximately 680 residential units, commercial space and generous public open space to RIBA stage 2/3.

Client - Galliard Homes



Garratt Lane

A Comprehensive regeneration scheme in Wandsworth providing 190 new high quality residential homes a new primary school and the modernisation of an existing GP- led health centre.

Client - Higgins Homes

We utilise the most up to date design and 3D modelling software allowing us to collaborate as part of a wider multi-disciplinary team in the creation of intelligent shared models that facilitate the analysis and design of structures. (BIM Compatible).



Clayfarm

A new build residential development in Cambridge comprising sustainable homes that are sensitive to the environment and in keeping with the architectural forms of Cambridge.

Client - Countryside Properties



The Reserve

A new residential development of 90, three four and five bedroom homes in Waltham Cross Hertfordshire. Winner of two prestigious London Evening Standard Awards for "Best out of London home" and "Best family home up to £750,000"

Client - Higgins Homes Plc



Parva Green

A new residential development scheme of 27 x 2/3/4 bedroom houses and 3 x 1 bedroom apartments.

Client - Higgins Homes

Our engineers review all projects throughout all stages of the design process to develop cost effective and functional design for construction.

Client Assurance

Horwitz Associates recognises the importance of its obligation to operate within the latest legislation and to meet its designer duties under the Health & Safety Executives (Regulation 9) guidelines. Our clients can take confidence in our ability to discharge our duties to the highest industry standards.

Internal Documents, Procedures and Training:

- Health & Safety Policy: Company expectations managed from day one.
- Project Checklists: Information management and document control.
- CDM Checklist: Assurance designer duties have been met.
- Risk Assessment: Management process of interrogation, elimination and documentation, for project specific and unusual hazards.
- Residual Risk Register: Identification of risks that require further management.
- Internal CPD Programme: Seminars to aid product selection when considering health and safety implications.
- Course Attendance: Where identified as necessary for specific projects/staff development.
- Regular Legislation Reviews: Updates made available as and when necessary.

Software Capabilities

□ Design

- FEM Software
- SCIA Engineer
- CADS System
 - Analysis Software: A3D Max, Smart Engineer, Analysis 3D.
 - Design Software: Steel, Concrete, Masonry
- Concrete Centre Spreadsheet
- Conflor
- Cellbeam
- Frank Shearail

□ Modelling

- BIM / Revit

□ Detailing

- AutoCAD

Policy Statement

As a consulting engineering practice it is our purpose to deliver cost effective and appropriate solutions, without compromising quality, through the application of our diverse and unique skills and state of the art technology.

We will always strive to employ honesty, integrity and excellence in our relationships with our staff, associates and clients.

Contact Us

Address

135 -137 New London Road
Chelmsford, Essex, CM2 0QT

Contact Details

Email : rh@rhorwitz.co.uk
Telephone: 01245 809510

Office Hours

Monday - Friday
09.00 hrs - 17.15 hrs