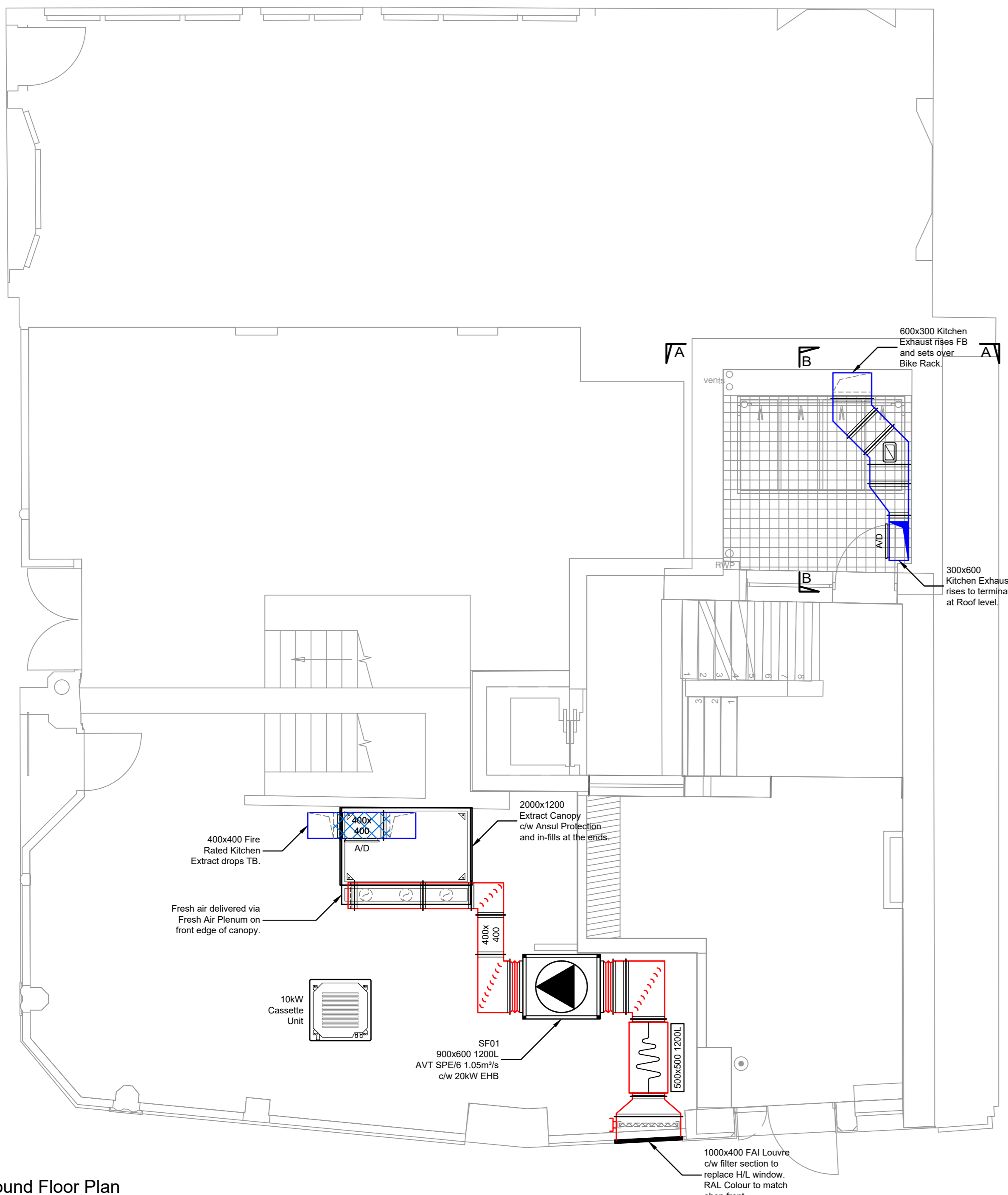
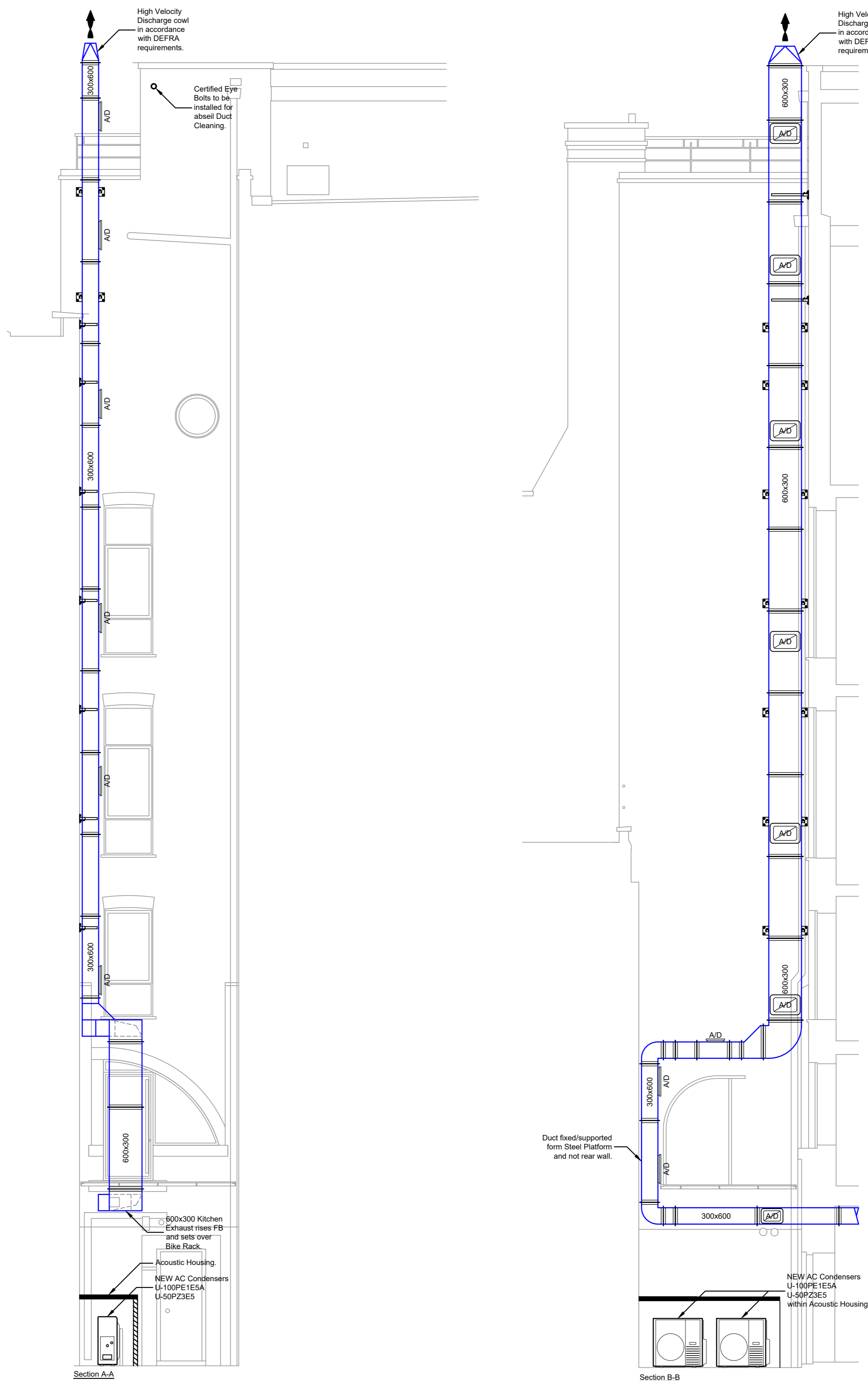


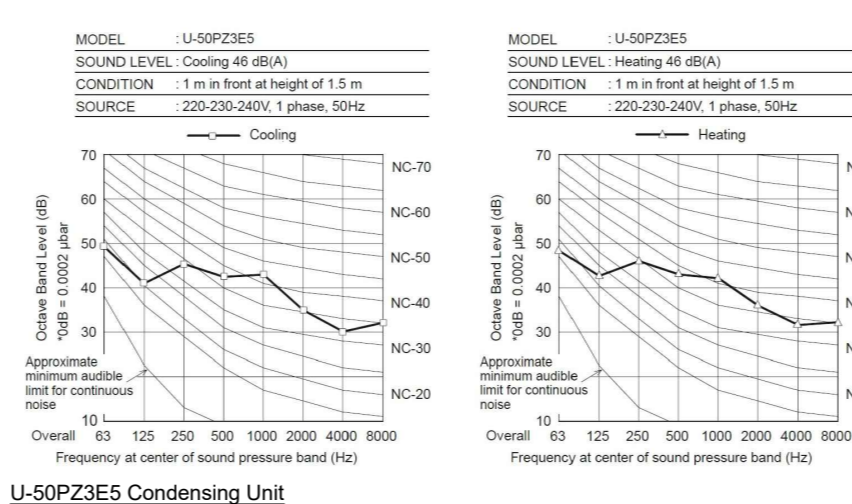
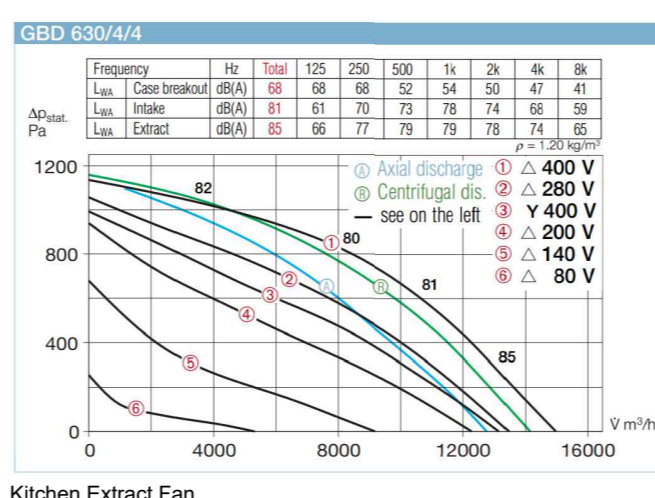
Basement Plan



Ground Floor Plan



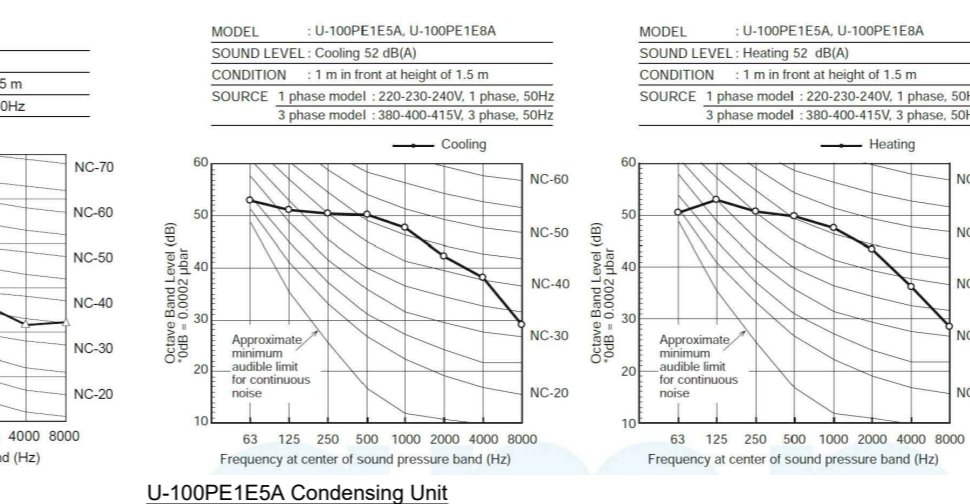
EQUIPMENT SOUND DATA



Fan Outlet Sound Levels

Model	Sound Pressure Level dB at 3m	Sound Power Levels dB							
		Mid Octave Bands (Hz)							
		63	125	250	500	1000	2000	4000	8000
SPE/SRE1	33	65	70	71	71	68	64	56	
SPE/SRE2	34	69	71	72	72	72	69	65	57
SPE/SRE3	38	73	75	77	76	76	73	69	61
SPE/SRE4	40	77	76	77	75	77	74	72	65
SPE/SRE5	41	77	77	78	76	78	75	73	66
SPE/SRE6	41	77	77	78	76	78	75	73	66
SPE/SRE7	39	76	78	76	78	76	74	72	67

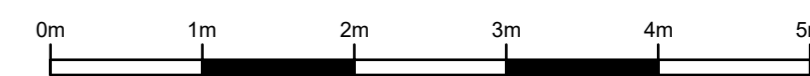
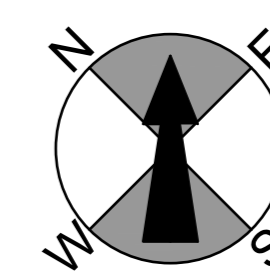
Supply Fan



Gresse Street Elevation



Site Plan



DRAWING TO BS5888:2011
Dimensions to be verified on site.
Dimensions to be taken in preference to those scaled.

0m 1m 2m 3m
SCALE BAR 1:50 @ A0

LEGEND:

VCD = Volume Control Damper
SBD = Single Blade Damper
CA = Canopy
AC = Fan Coil Unit
CU = Condenser Unit
AHU = Air Handling Unit
RHU = Heat Recovery Unit
EF = Extract Fan
SF = Supply Fan
SG = Supply Grille
EG = Extract Grille
LV = Louvre
FT = Filter
ODH = Over Door Heater
F.O. = Flat Oval Duct
HB = Heater Battery
ATT = Attenuator
FD = Fire Damper
AD = Access Door
FB = From Below
TA = To Above
TB = To Below
FA = From Above
CTS = Call To Suit On Site
TBSM = To Be Site Measured

ZZZ = Multi-leaf Volume Control Damper
Z = Single Blade Volume Control Damper
F = Fire Damper
90° Bend Facing Upwards
90° Bend Facing Downwards
Access Door on U/S of Duct
Access Door on Front of Duct
MM from FFL to Center Line of Duct
MM from FFL to U/S of Duct
Ceiling Access Panel
2Hr Fire Rated

NOTES:

- Kitchen Extract to have Access Doors within every 2m, except in riser where Access Doors will be installed where Maintenance Access is provided (for example fixed steel platforms). Access doors will always be installed on the side face of ducts to prevent grease leakage/buildup.
- Kitchen Extract will not have Fire Dampers or VCDs installed in Duct runs.
- Rectangular Duct flanges are 20mm for Ducts less than 1000mm wide and 30mm for Ducts more than 1000mm wide.

Revised in accordance with client comments.

Revised in accordance with client comments and Acoustician report.

REV DATE COMMENTS

Project:
Tudor House
23 Rathbone Place/35 Grease Street
London W1T 1QY

Planning Proposal
Basement, Ground Floor and Lightwell
Layouts

Date: 23/03/22 Scale: 1:50 @ A0
Drawn By: PM Checked By: DV
Drawing No: PPD1 Revision: B

SUMMIT DESIGN LTD.
Unit 5, The Courtyard,
Meadowlands,
Farning Road,
Bourne End,
Bucks.
SL8 8SAU

Tel: 01628 536680
info@summitdesign.co.uk
www.summitdesign.co.uk

Not to be used for any other project without the written consent of Summit Design Limited.
Registered in England and Wales No. 2742223