

New, individually illuminated LEON letters fixed back to existing fascia panel. LED lights to be red not white.  
 Details and final design by signage contractor.  
 Luminance level = 250 candela per SQM. U/S @ 2870mm AFFL.  
 Details and final design by signage contractor.

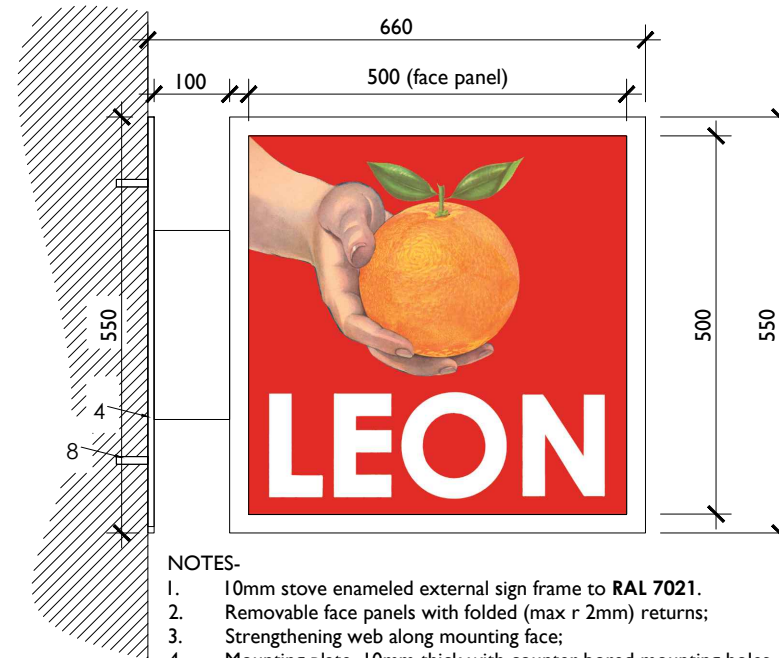
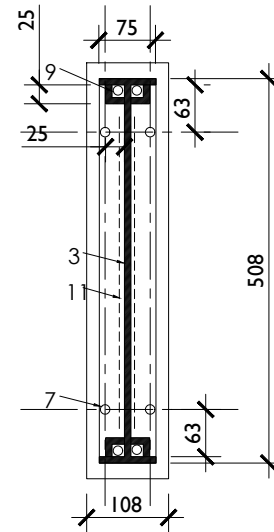
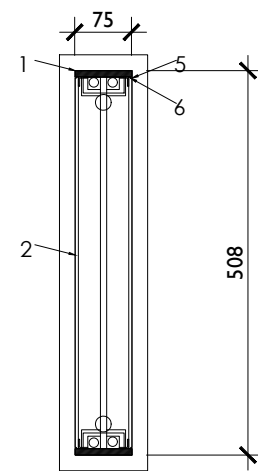
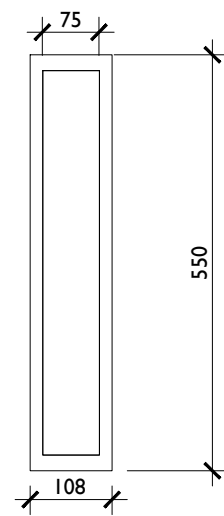
Fascia to be rendered/ painted to match **RAL 5008**.  
 Paint to be suitable for outside weather.



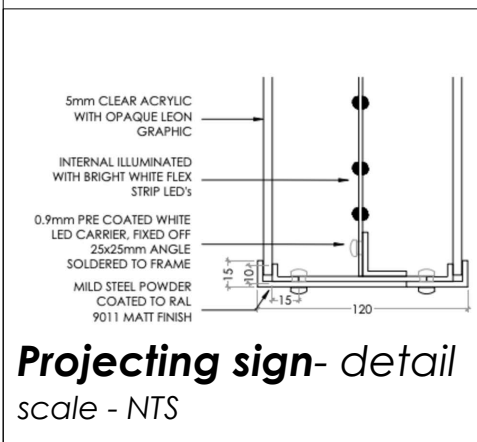
New internally illuminated projecting sign on support arm. By signage contractor.  
**U/S 2920mm** AFFL Luminance level = 250 candela per SQM  
 Details and final design by signage contractor.

**Naturally Fast Food** signage stencil painted on fascia panel in gold.  
 Details and final design by signage contractor.

**Projecting sign- as proposed**  
 scale - 1:20 @ A1 / 1:40 @ A3



- NOTES-
- 10mm stove enameled external sign frame to **RAL 7021**.
  - Removable face panels with folded (max r 2mm) returns;
  - Strengthening web along mounting face;
  - Mounting plate, 10mm thick with counter bored mounting holes.
  - 5mm wide x 10mm deep shadow gaps between frame and face panel.
  - Rear face of shadow gap to be painted to match sign frame (**RAL 7021**).
  - 4 No 18mm x M12 s/s fixing bolts (with washers for over sized fixing holes)
  - 4 No fixing bolts to suit site conditions.
  - Services channel.
  - Exact artwork to be approved by LEON before production
  - LED illumination by others, (Max illumination of 300 Cd/m.)



**Projecting sign- detail**  
 scale - NTS

**Projecting sign- as proposed**  
 scale - 1:5 @ A1 / 1:10 @ A3

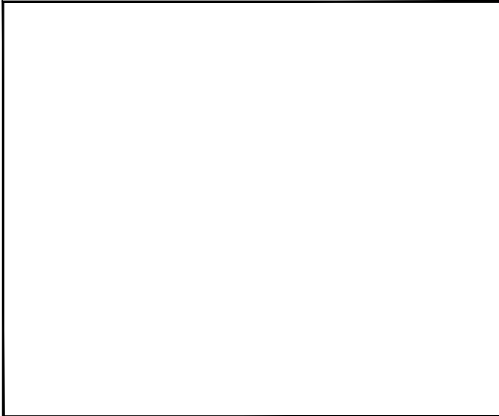
**STUDIO INGENIUM**  
 1 Gemini court  
 42A Throwley Way  
 Sutton, Surrey  
 SM1 4AF  
 telephone: +44 (0) 7712159151

NORTH:

Written dimensions on these drawings shall take precedence over scaled dimensions. Contractors shall verify and be responsible for all dimensions and conditions on the project and this office must be notified of any variations from the dimensions and conditions shown by these drawings prior to commencement of any work. All contractors are deemed to have made themselves aware of site conditions prior to entering into any contract. Shopfitting details must be submitted to this office for approval before proceeding with fabrication. This drawing is the property of Studio Ingenium Ltd. Copyright is reserved by them and the drawing is issued on condition that it is not copied, reproduced, retained or disclosed to any unauthorised person, either wholly or in part without the consent in writing of Studio Ingenium Ltd.



SYMBOLS



NOTES

- ALL DIMENSIONS TO BE CONFIRMED
- DETAILED SIGNAGE DRAWINGS BY SIGNAGE CONTRACTOR

B	31/03/2022	bus stop signage aligned to fascia panel centerline	JC	CB
A	18/03/2022	shell updated following survey	JC	CB
rev	date	description	drawn	checked

PROJECT  
**EUSTON ROAD, LONDON**

Address: Clifton House  
 91 Euston Road  
 NW1 2RA, London

CLIENT  
**LEON** LEON Office  
 27 Copperfield Street  
 London SE1 0EN

Drawing title :  
**Signage As proposed**

scale	job number	date	revision
as noted	2021012	January 2022	B

Drawing status  
**DESIGN INTENT**

Drawing number  
**A213**