

# Panther House Planning Conditions

## Condition 30: Biodiverse roof

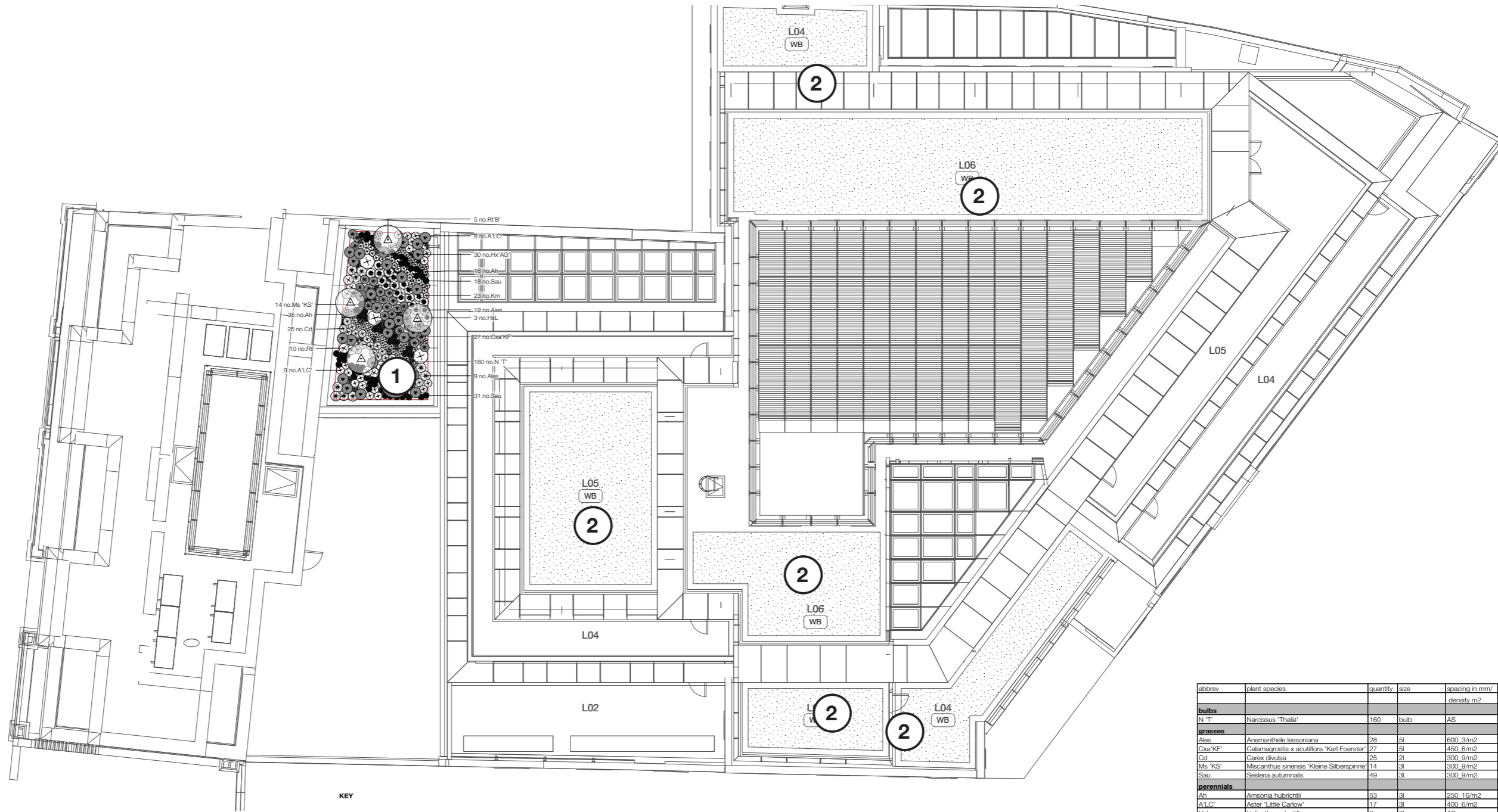
*30. Full details in respect of the brown/green roof in the area indicated on the approved roof plan designed to support both black redstarts and invertebrates to increase bat foraging on the site shall be submitted to and approved by the local planning authority before the relevant part of the development commences. The details shall include species, planting density, substrate and a section at scale 1:20 showing adequate depth is available in terms of the construction and long term viability of the green roof, and a programme for a scheme of maintenance shall be submitted to and approved in writing by the local planning authority. The green roof shall be fully provided in accordance with the approved details prior to first occupation and thereafter retained and maintained in accordance with the approved scheme of maintenance.*



# Panther House Planning Conditions

## Condition 30: Biodiverse roof

- ① Intensive Green Roof
- ② Biodiverse Green Roof



**KEY**



**Biodiverse roofs - total 310 sq m**

**Wildflower blanket XF118**

Baudeur Wildflower Blanket with 24 no species or acceptable equivalent

Indicative list includes:

- Achillea millefolium*
- Artemisia maritima*
- Bellis perennis*
- Campanula glomerata*
- Campanula rotundifolia*
- Centaurea cyanus*
- Centaurea erythraea*
- Dianthus deltoides*
- Echium vulgare*
- Galium verum*
- Geum rivale*
- Linaria vulgaris*
- Lotus corniculatus*

*Lychnis floe-cu-cuff*

- Papaver rhoeas*
- Pilosella aurantiaca*
- Prunella vulgaris*
- Rhianthus minor*
- Saponaria officinalis*
- Scabiosa columbaria*
- Sedum acre*
- Silene uniflora*
- Silene vulgaris*
- Thymus polytricus*
- Viola riviniana*

**Additional plug plantings**

- 3 groups of 20 plugs of each species in drifts and in random patterns
- Crocus* sp. (bulb)
- Daucus carota* sssp. *maritimus*
- Dianthus carthusianus*
- Euphorbia cyparissias*
- Muscari* sp. (bulb)
- Sternbergia lutea* (bulb)
- Teucrium chamaedrys*
- Viola riviniana*

N.B Plug plants are not in the schedule

abbrev	plant species	quantity	size	spacing in mm/	density m2
<b>bulbs</b>					
N'T	Narcissus 'Thalia'	160	bulb	AS	
<b>grasses</b>					
Ales	Arenarthele lessortiana	28	5l	600 3/m2	
Cxa'KF	Calamagrostis x acutiflora 'Karl Foerster'	27	5l	450 6/m2	
Cd	Carex divulsa	25	2l	300 9/m2	
Ms 'KS'	Miscanthus sinensis 'Kleine Silberspinne'	14	3l	300 9/m2	
Sau	Sesleria autumnalis	49	3l	300 9/m2	
<b>perennials</b>					
Ah	Armonia hubrichtii	53	3l	250 16/m2	
A'LC'	Aster 'Little Carlow'	17	3l	400 6/m2	
Hxl	Helianthus x laetiflorus	3	3l	AS	
Km	Knaulia macedonica	23	3l	300 9/m2	
Rt	Rudbeckia triloba	10	3l	500 4/m2	
<b>shrubs</b>					
Hx'AG'	Hebe x 'Autumn Glory'	30	5l	450 5/m2	
Rt'B'	Rhus typhina 'Baltiger'	5	10L	Multistem AS	
<b>climbers</b>					
<b>trees</b>					

rev T01 06.10.2021: Tender issue

FOR TENDER

CDM:

In addition to the hazards / risks normally associated with the types of work detailed on this drawing, note the following:

1. xxxxxx

Do not scale from the drawing. Any discrepancies to be reported to the architect. All dimensions will be taken on site prior to ordering and construction. Copyright remains with the landscape architect. This drawing is to be read in conjunction with the specification and all other relevant drawings.

**BBUK**

BBUK Studio Ltd  
Unit 10, The Drive Centre  
100 Bartholomew Road  
London NW2 2JU

t: +44 (0)207 4854649  
e: info@bbukstudio.com  
www.bbukstudio.com



project  
Panther House

drawing  
Planting plan - upper level terraces, office

drawing nr  
L-S-022-20200 -PP22

date  
Oct'21

scale  
1:1000A3

rev  
T01

work stage  
Stage 4

drawn  
di

checked  
jk

# Panther House Planning Conditions

## Condition 30: Biodiverse roof

The submitted planting schedules prescribe the species and densities that have been designed by the landscape architect to achieve appropriate cover and encourage thriving of wildlife.

The final species mix will be dependent on the green roof specification and supplier chosen by the contractor however, where possible species from the following list/or those listed in the Ecology Report (ref: 550697JB14JAN16FV02\_PEA ) will be selected

abbrev	plant species	quantity	size	spacing in mm/	flower color	fruit color	flowering/	mature	mature	shade/ sun/	native	wildlife	Evergreen/	other notable characteristics / notes
				density m2			fruit period	height	spread	semi-shade		beneficial	deciduous	
<b>bulbs</b>														
N 'T'	Narcissus 'Thalia'	160	bulb	AS	White/Cream		April	350	100	Sun/Part Shade			D	Deadhead as flowers fade and allow the leaves to die down naturally
<b>grasses</b>														
Ales	Anemanthele lessoniana	28	5l	600 3/m2	Purple/Bronze		Summer	1000	750 - 1000	Sun/Part Shade			S-E	Remove old foliage to tidy if necessary
Cxa'KF'	Calamagrostis x acutiflora 'Karl Foerster'	27	5l	450 6/m2	Brown/Gold		Autumn	1000 - 1500	400 - 1000	Sun/Part Shade			D	Cut back old stems to ground in early spring.
Cd	Carex divulsa	25	2l	300 9/m2	Green		Summer	300-450	300-400	Sun//Part Shade	Y		E	Trim back hard after flowering in spring
Ms 'KS'	Miscanthus sinensis 'Kleine Silberspinne'	14	3l	300 9/m2	Brown/Red		Summer Autumn	1000 - 1500	100 - 500	Sun			D	Remove dead foliage and old flowered stems in spring
Sau	Sesleria autumnalis	49	3l	300 9/m2	White/Silver		Summer	500	500	Sun/Part Shade			E	Remove dead leaves in early spring.
<b>perennials</b>														
Ah	Amsonia hubrichtii	53	3l	250 16/m2	Blue		Summer	700	300	Sun		Y	D	
A'LC'	Aster 'Little Carlow'	17	3l	400 6/m2	Yellow/Dark Blue		Autumn	1000	500	Sun/Part Shade			D	Cut back in late autumn.
HxL	Helianthus x laetiflorus	3	3l	AS	Yellow		Summer	2000mm	1000mm	Full Sun		Y	D	Sunflower is a large plant that produces large, yellow flowers followed by
Km	Knautia macedonica	23	3l	300 9/m2	Red		Summer	500-1000	200-500	Sun		Y	D	Old flower stems can be cut down after flowering.
Rt	Rudbeckia triloba	10	3l	500 4/m2	Yellow/Gold		Summer/Autumn	500-1000	500-1000	Sun		Y	D	Lift and divide congested colonies in autumn or spring.
<b>shrubs</b>														
Hx'AG'	Hebe x 'Autumn Glory'	30	5l	450 5/m2	Deep Purple		Summer	600	900	Sun/Part Shade	Y	Y	E	Remove misplaced or damaged branches in late spring.
Rt'B'	Rhus typhina 'Bailtiger'	5	10L Multistem	AS	Yellow/Green	Red	Early Summer	2000	2500	Sun/Part Shade			D	Shear annually to stool and shape.

To be read in conjunction with Planting plan L-S-022-20200-PP22  
Plant schedule 01 of 01

abbrev	plant species	quantity	size	spacing in mm/	flower color	fruit color	flowering/	mature	mature	shade/ sun/	native	wildlife	Evergreen/	other notable characteristics / notes
				density m2			fruit period	height	spread	semi-shade		beneficial	deciduous	
<b>bulbs</b>														
N 'T'	Narcissus 'Thalia'	241	bulb	AS	White/Cream		April	350	100	Sun/Part Shade			D	Deadhead as flowers fade and allow the leaves to die
Ts	Tulipa sprengeri	48	bulb	AS	Orange buff		Spring	400	150	Part shade			D	
<b>grasses</b>														
Ales	Anemanthele lessoniana	28	5l	600 3/m2	Purple/Bronze		Summer	1000	750 - 1000	Sun/Part Shade			S-E	Remove old foliage to tidy if necessary
Cxa'KF'	Calamagrostis x acutiflora 'Karl Foerster'	27	5l	450 6/m2	Brown/Gold		Autumn	1000 - 1500	400 - 1000	Sun/Part Shade			D	Cut back old stems to ground in early spring.
Cd	Carex divulsa	25	2l	300 9/m2	Green		Summer	300-450	300-400	Sun//Part Shade	Y		E	Trim back hard after flowering in spring
Hm	Hakonechloa macra	5	3l	350 10/m2	Pale green		Summer	450	350	Part Shade/S			D	Cut back in late winter
Ln	Luzula nivea	73	3l	300 9/m2	White		Summer	500-1000	100-500	Part Shade/S			E	Check for overcrowding & divide.
Ls	Luzula sylvatica	24	3l	350 8/m2	Brown		Summer	500-1000	1000-1500	Sun/Part Shade	Y		E	Check for overcrowding & divide if necessary.
Ms 'KS'	Miscanthus sinensis 'Kleine Silberspinne'	14	3l	300 9/m2	Brown/Red		Summer Aut	1000 - 1500	100 - 500	Sun			D	Remove dead foliage and old flowered stems in spring
Sau	Sesleria autumnalis	49	3l	300 9/m2	White/Silver		Summer	500	500	Sun/Part Shade			E	Remove dead leaves in early spring.
<b>perennials</b>														
Ah	Amsonia hubrichtii	53	3l	250 16/m2	Blue		Summer	700	300	Sun		Y	D	
As	Asplenium scolopendrium	66	5l	350 8/m2				300-500	300-500	Part Shade/S	Y		E	Dead or damaged fronds may be removed
A'LC'	Aster 'Little Carlow'	17	3l	400 6/m2	Yellow/Dark Blue		Autumn	1000	500	Sun/Part Shade			D	Cut back in late autumn.
Daff	Dryopteris affinis	6	3l	750 2/m2				1500	500-1000	Sun/Part Shade	Y		S-E	Dead or damaged fronds may be removed as necessary
HxL	Helianthus x laetiflorus	3	3l	AS	Yellow		Summer	2000mm	1000mm	Full Sun		Y	D	Sunflower is a large plant that produces large, yellow
H'S&S'	Hosta x 'Sum and Substance'	3	3l	AS	lavender		Summer	1000mm	1000mm	Shade  Shade			D	
Km	Knautia macedonica	23	3l	300 9/m2	Red		Summer	500-1000	200-500	Sun		Y	D	Old flower stems can be cut down after flowering.
Lm 'MW'	Liriope muscari 'Monroe White'	19	3l	300 9/m2	White	Black	Summer	100-500	100-500	Part Shade/S			E	
OmV	Omphalodes verna	5	3l	AS	Blue		Spring	500	200-500	Part Shade			S-E	
Plw	Polypodium vulgare	35	5l	400 7/m2				100-500	500-1000	Sun/Part Shade	Y		E	Cut back dead leaves in spring.
Rt	Rudbeckia triloba	10	3l	500 4/m2	Yellow/Gold		Summer/Aut	500-1000	500-1000	Sun		Y	D	Lift and divide congested colonies in autumn or spring
Tc	Tiarella cordifolia	42	3l	300 9/m2	White		Summer	100-500	100-500	Part Shade/S			D	Remove spent flowers and leaves as required.
<b>shrubs</b>														
Hx'AG'	Hebe x 'Autumn Glory'	30	5l	450 5/m2	Deep Purple		Summer	600	900	Sun/Part Shade	Y	Y	E	Remove misplaced or damaged branches in late spring.
Me'SC'	Mahonia eurybracteata 'Soft Caress'	6	10l	500 4/m2	Yellow	Blue/Black	Summer	1000	1000	Sun/Part Shade		Y	E	
Rt'B'	Rhus typhina 'Bailtiger'	5	10L Multistem	AS	Yellow/Green	Red	Early Summer	2000	2500	Sun/Part Shade			D	Shear annually to stool and shape.
Sco	Sarcococca confusa	15	5L	800 2/m2	White	Black	Winter	1200	1800	Part Shade/S	Y	Y	E	If necessary prune in late summer.
<b>climbers</b>														
Hh'CW'	Hedera helix 'Cathedral Wall'	8	min 1.75m high	AS	Green		Summer	3000	2000	Sun/Part Shade			E	Follow a regular watering schedule during the first year
Ti	Trachelospermum jasminoides	9	15l-min1.75m high	AS	White		Summer	9m	3m	Sun/Part Shade			E	Grown as climber.
<b>trees</b>														
	Dicksonia antarctica	3	10-15l, min.1.5m high	AS				4m	4m	Full shade/part				
	Gleditsia triacanthos 'Shademaster'	1	girth 35-40cm, rootballed	AS	Cream	Brown	Spring	25m	8m	Sun		Y	D	

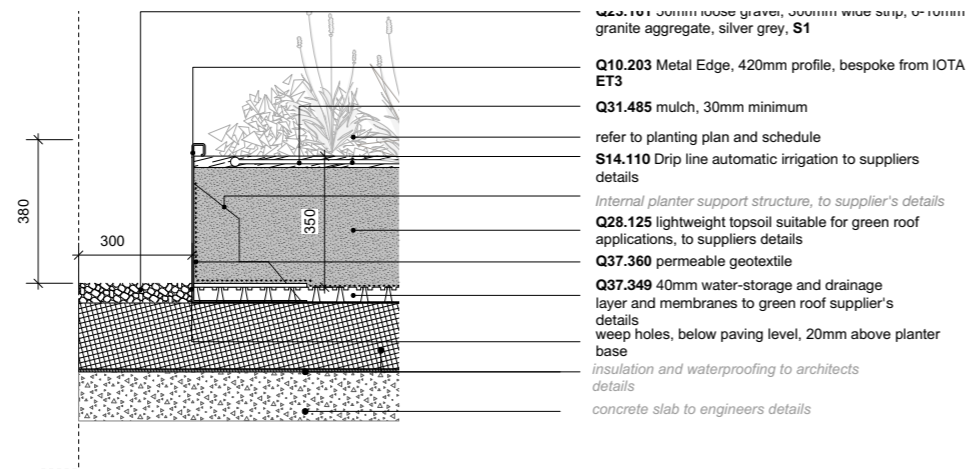
To be read in conjunction with Planting plans L-S-022-20200-PP12 and L-S-022-20200-PP12  
Plant schedule 01 of 01

# Panther House Planning Conditions

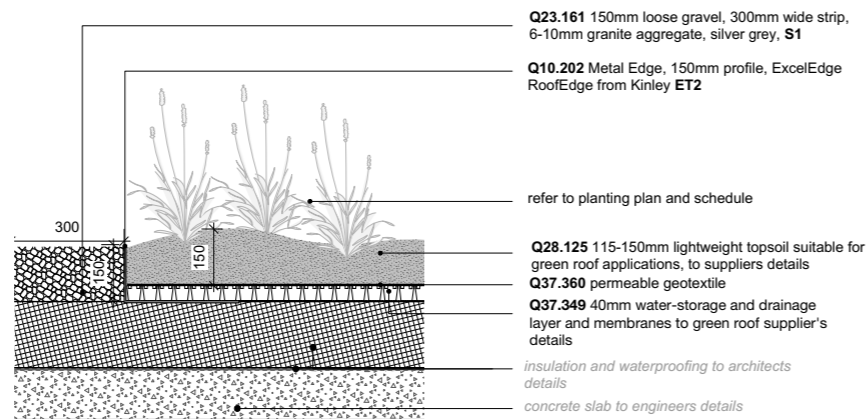
## Condition 30: Biodiverse roof

Adequate soil depths have been allowed for to encourage a variety of species to grow and to provide for diverse planting in the scheme.

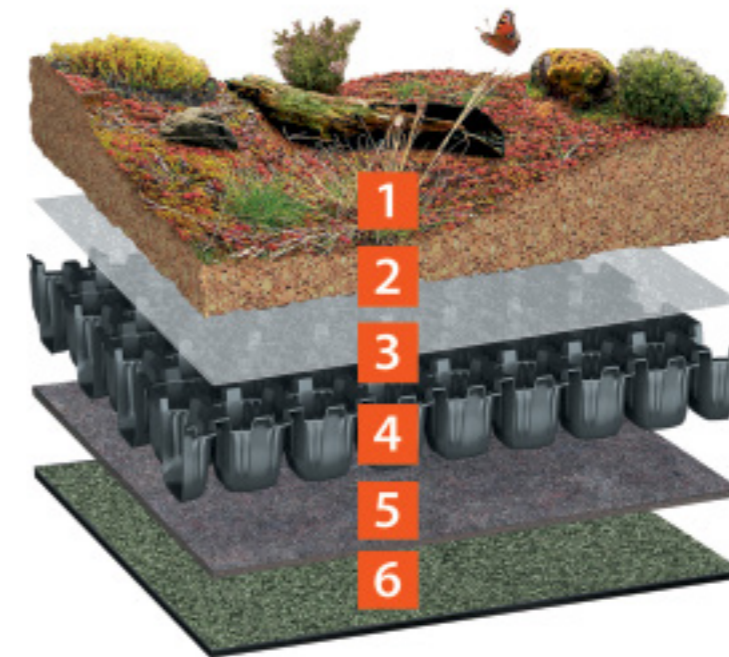
In consultation with an ecologist a seeded/plug plant based biodiverse roof specification has been selected.



1. Extensive Green Roof\_Scale 1:20



2. Biodiverse Green Roof\_Scale 1:20



Example biodiverse build-up from Bauder Systems