

Panther House Planning Conditions

Condition 12: Cycle Parking


Prior to commencement of the above ground superstructure works details of secure and covered cycle storage area for 149 spaces (130 long stay and 19 short stay) shall be submitted to and approved by the local planning authority. The approved storage areas shall be provided in their entirety prior to the first occupation of the development, and permanently retained thereafter.

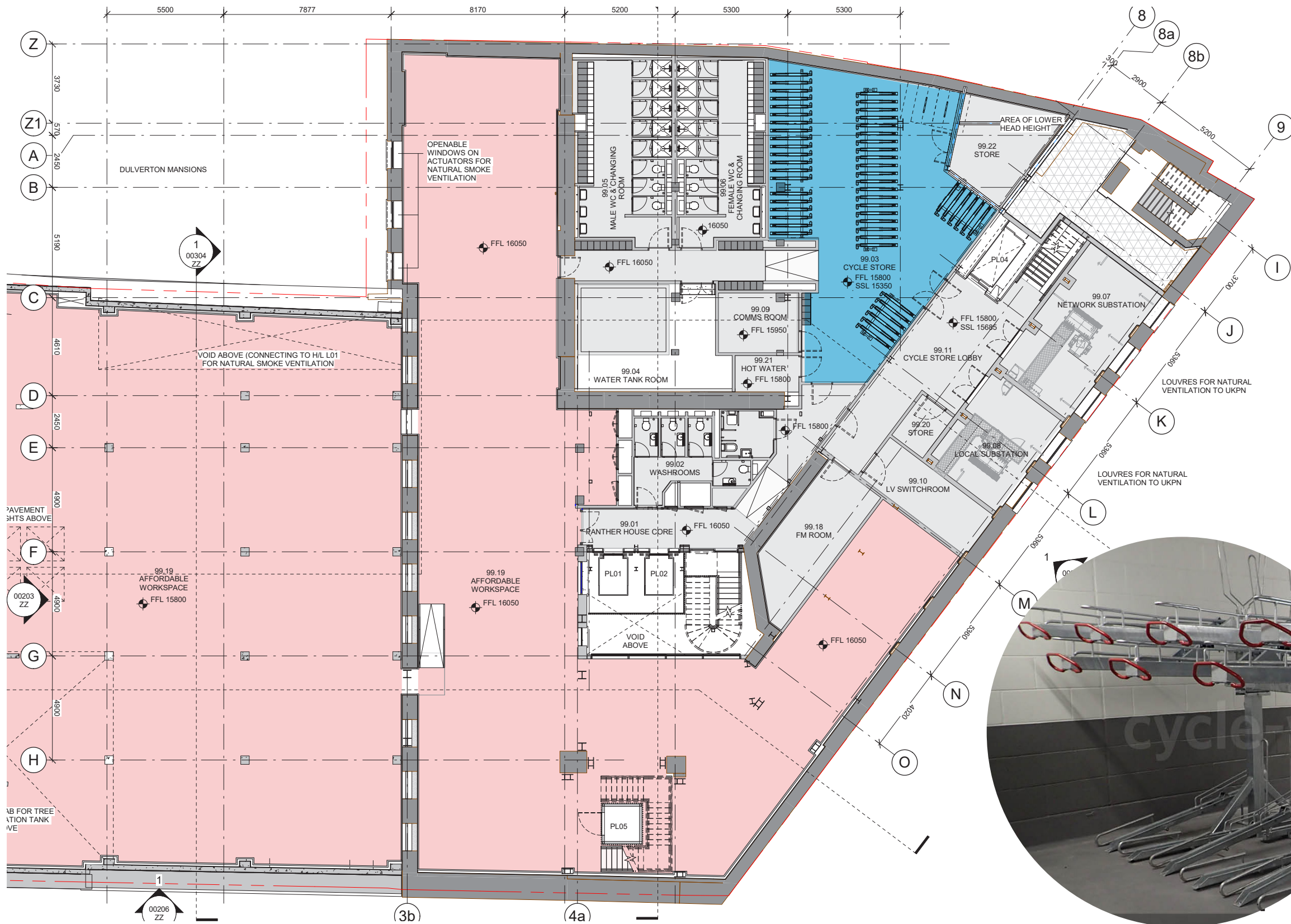
Panther House Planning Conditions

Condition 12: Cycle Parking

12. Prior to commencement of the above ground superstructure works details of secure and covered cycle storage area for 149 spaces (130 long stay and 19 short stay) shall be submitted to and approved by the local planning authority. The approved storage areas shall be provided in their entirety prior to the first occupation of the development, and permanently retained thereafter.

Key

 Secure Cycle Store
130 spaces total



Lower Ground Floor Plan



Example of specified Josta 2 tier high capacity gas assisted cycle racks

Panther House Planning Conditions

Condition 12: Cycle Parking



Product Specification

Josta 2-tier High Capacity Rack

Description

The 2-tier racks are designed to get the maximum number of bikes into a limited space, in a safe, easy to use way. There are many unique features of the Josta racks, including the low, easy to use handles, the clever, patented way the bikes are held on the racks, and the general ease of use. There are many unique features of the Josta racks, including the low, easy to use handles, the clever, patented way the bikes are held on the racks, and the general ease of use. They are also designed for a long, tough life of constant heavy use, with low maintainance However, the most important factor is always Safety, and the Josta racks are very safe to use. This is a particularly important feature for heavy bikes.

Features

- Double the capacity of bicycle storage spaces
- Easy and safe to use
- Space efficient
- Flexible and adaptable
- Neat and organised
- Individual racking – one bike per space
- Low maintenance
- Patented gripping system holds bike securely
- Maximises cycle parking spaces
- BREEAM compliant
- Framework can be coloured in any standard RAL colour

Construction

This Rack is made from pre-galvanised and mild steel, the framework can be powder-coated in any RAL colour.

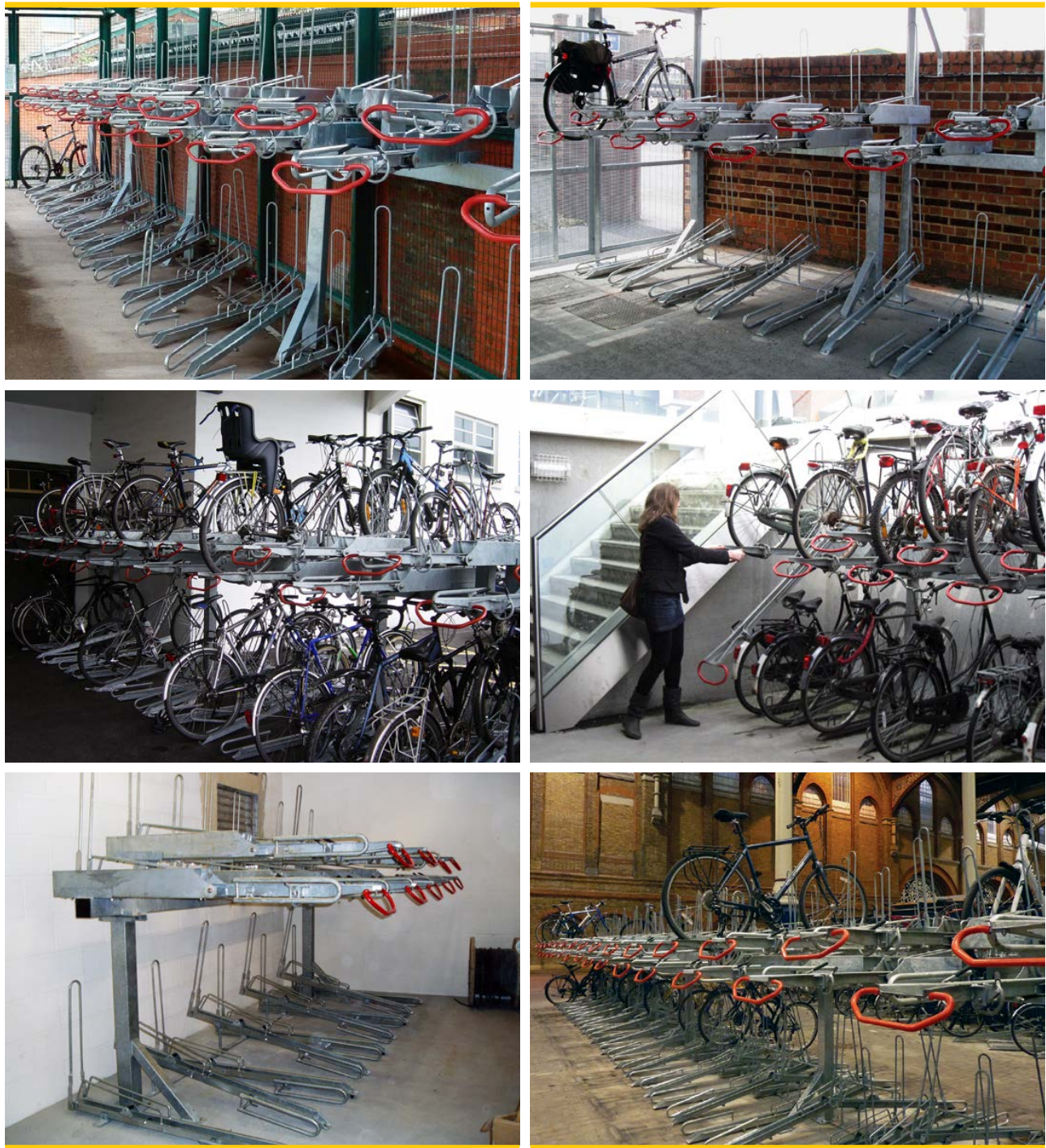
Dimensions

- A minimum headroom of 2600mm is required for maximum capacity.
- 300mm to any adjoining side wall.
- Minimum of 400mm centres (450mm recommended).
- Allow 2000mm for the rack itself, plus a minimum of 1700mm in front for access.
- The racks can also be installed from a central spine. For this option, please leave 2000mm for access on both sides. The 2-sided unit is then 3100mm wide.
- Racks can also be installed at a 45 or 55 degree angle to minimise space.

Optional (£POA)

- Duisburg legs (legs for concrete floor)
- Powder coated framework

Product Gallery



Cycle-Works
8-9 Rodney Road
Portsmouth
Hampshire
PO4 8BF

t 02392 815 555
f 02392 815 544
e info@cycle-works.com
w cycle-works.com

Cycle-Works Ltd
Registered in England 3268339



Cycle-Works
8-9 Rodney Road
Portsmouth
Hampshire
PO4 8BF

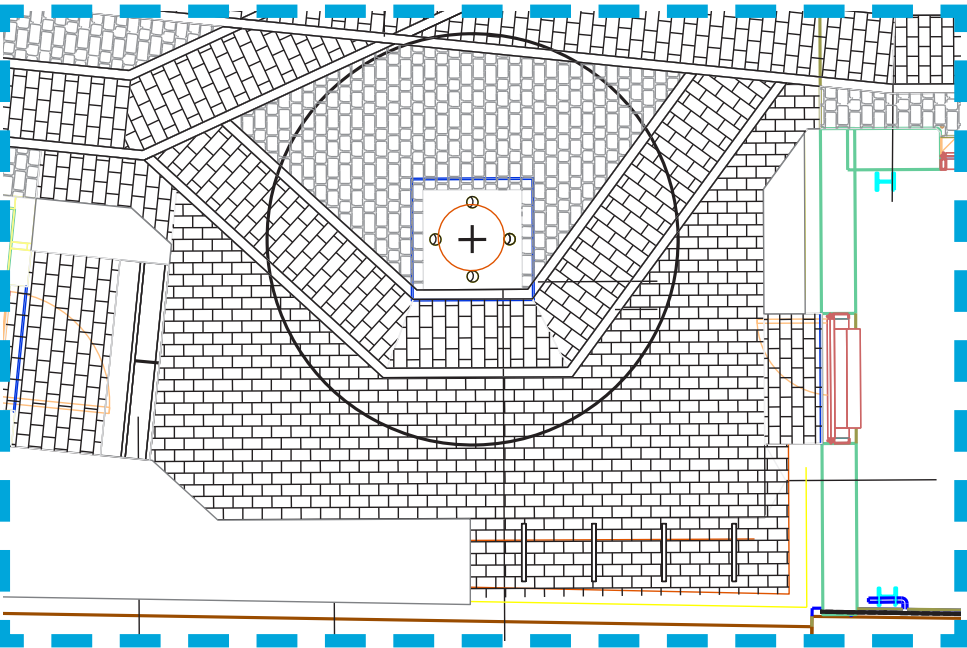
t 02392 815 555
f 02392 815 544
e info@cycle-works.com
w cycle-works.com

Cycle-Works Ltd
Registered in England 3268339

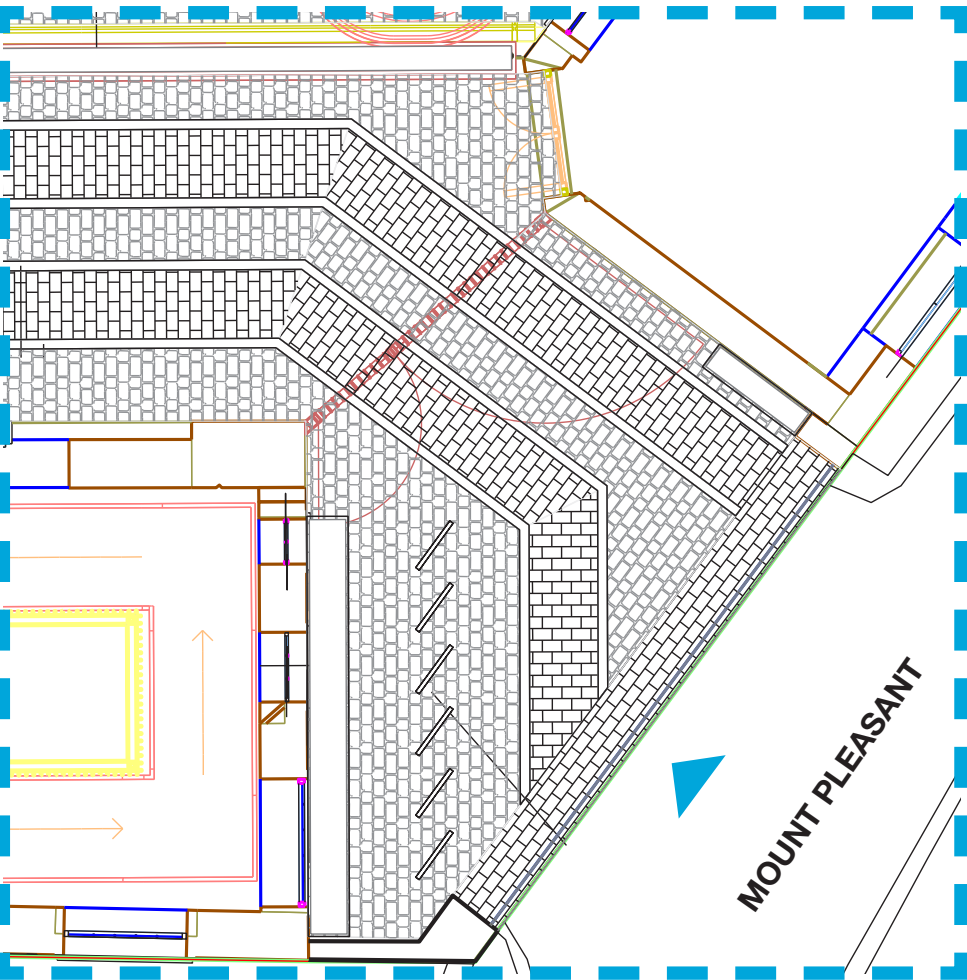


Panther House Planning Conditions

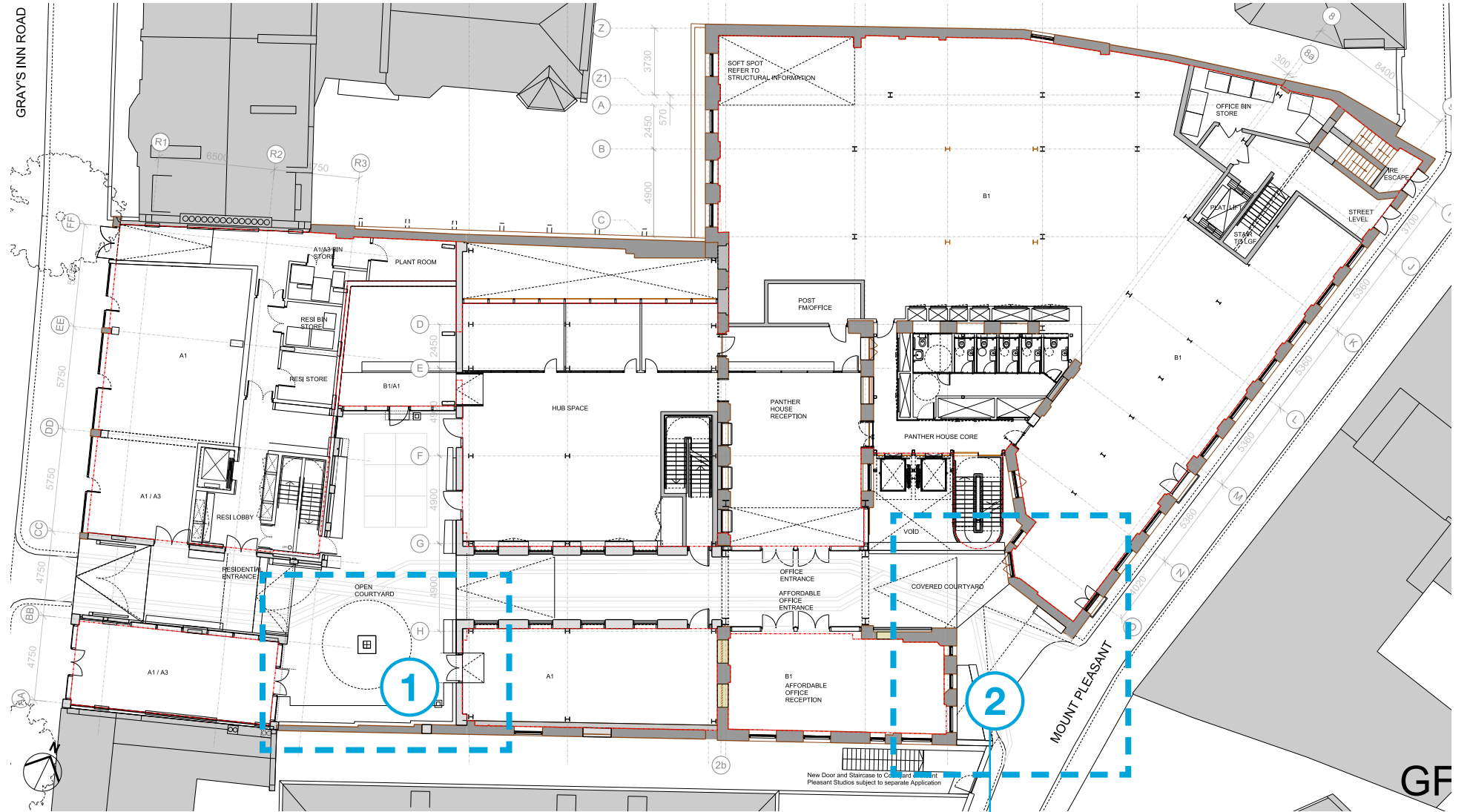
Condition 12: Cycle Parking



① 8No. Spaces within courtyard



② 12No. Spaces at Mount Pleasant Main Entrance



Ground Floor Plan as S73

