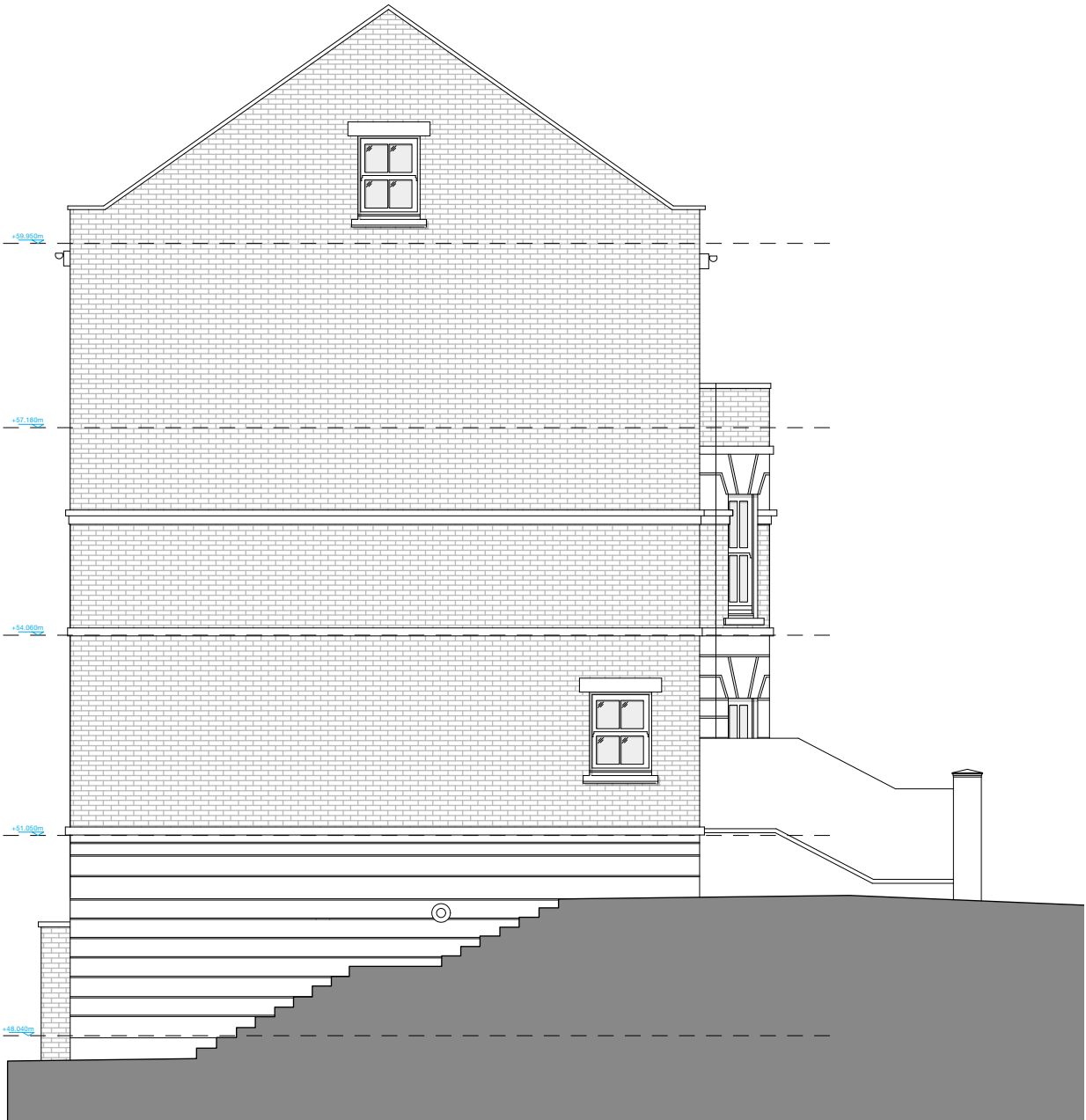


© This drawing is the property of Miltiadou Cook Mitzman architects. No disclosure or copy of it may be made without the written permission of Miltiadou Cook Mitzman architects.

For construction purposes:

- Do not scale this drawing.
- All dimensions and levels to be checked on site.
- Discrepancies to be reported to Miltiadou Cook Mitzman architects before proceeding.
- If in any doubt about information on this drawing contact Miltiadou Cook Mitzman architects.

REVISION			
NUMBER	DATE	BY	NOTES
P3	17/05/2022	RH	Revised Information for Planning

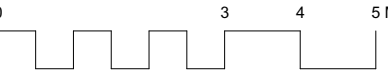


NOTES:

KEY:

EXISTING STRUCTURE

PROPOSED WORKS



MCMa

MILTIADOU
COOK
MITZMAN architects llp

020 7722 8525
office@mcma.design
www.mcma.design

Unit 1 Primrose Mews
Sharpleshall Street
London NW1 8YW

CLIENT
Mike Peskin

PROJECT
3b Torriano Avenue, London NW5
2SN

SHEET TITLE
Proposed Elevation 3 (Side)

SCALE
1:100

DATE CREATED
OCT 21

FILE REFERENCE

DRAWING NUMBER	REVISION
361-DWG-122	P3

