

FLOOR AREAS:		
Ground Floor	Square Meterage	Square Footage (approx)
FOH (customer areas)	36.54	393.26
Servery	13.97	150.37
FOH Subtotal	50.51	543.63
BOH*	102.25	1100.61
WC's	0	0
Total	152.76	1644.24
*BOH area includes: Staff room, Refuse area, COSHH, Managers office, Electric cupboard.		
Internal covers: 7no. External Covers: 12no tables, 24 chairs		



Pret outdoor seating: 24no
External aluminium frame (black) and teak slatted chair



square tables: 12no
External 500x500mm black Trespa 12mm thick table top with aluminium base

seating barrier: 6no
Fabric banner with printed logo supported by stainless steel post and base

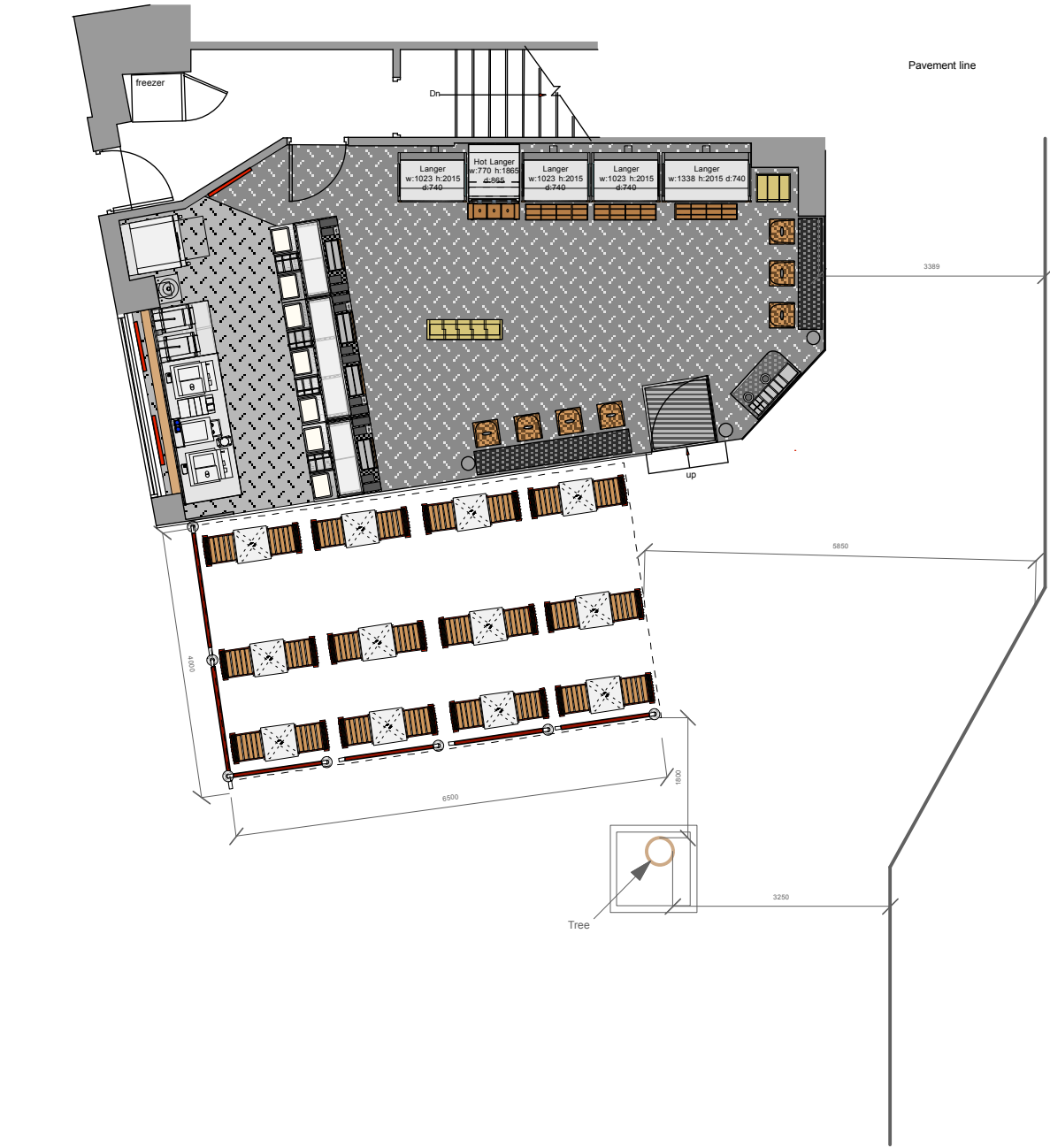
note: external furniture to be brought into store outside of trading hours

FOH Equipment list

7no tills: 2x 2no Glass top till module (Nuttall)
1x 3no Glass top till module (Nuttall)

Back couter: 2no Cimballi machines
1no Filter machine
2no Ovens
1no Smoothie station (Slim)
2no Toastie machines

Langers: 1no 770 x 770mm Hot Langer
2no 1250 x 910mm Cold Langer
2no 990 x 910mm Cold Langer



Notes:

As Built

★ PRET A MANGER ★
1 Hudson Place, London, SW1V 1PZ

Site: **240 High Holborn London**

Title: Shop Layout

Rev: Date: Drawn By:

Dwg No. 240-Pret-01

Date: 23.01.15 Revision:

Scale: 1:100 @ A3 Drawn By: LJB

THIS DRAWING IS NOT TO BE SCALED
Figured dimensions only to be used. This drawing is subject to and protected by the provision of the copyrights acts. Any discrepancies or queries to be notified immediately. All dimensions to be verified on site

© PRET A MANGER (EUROPE) LTD 2004