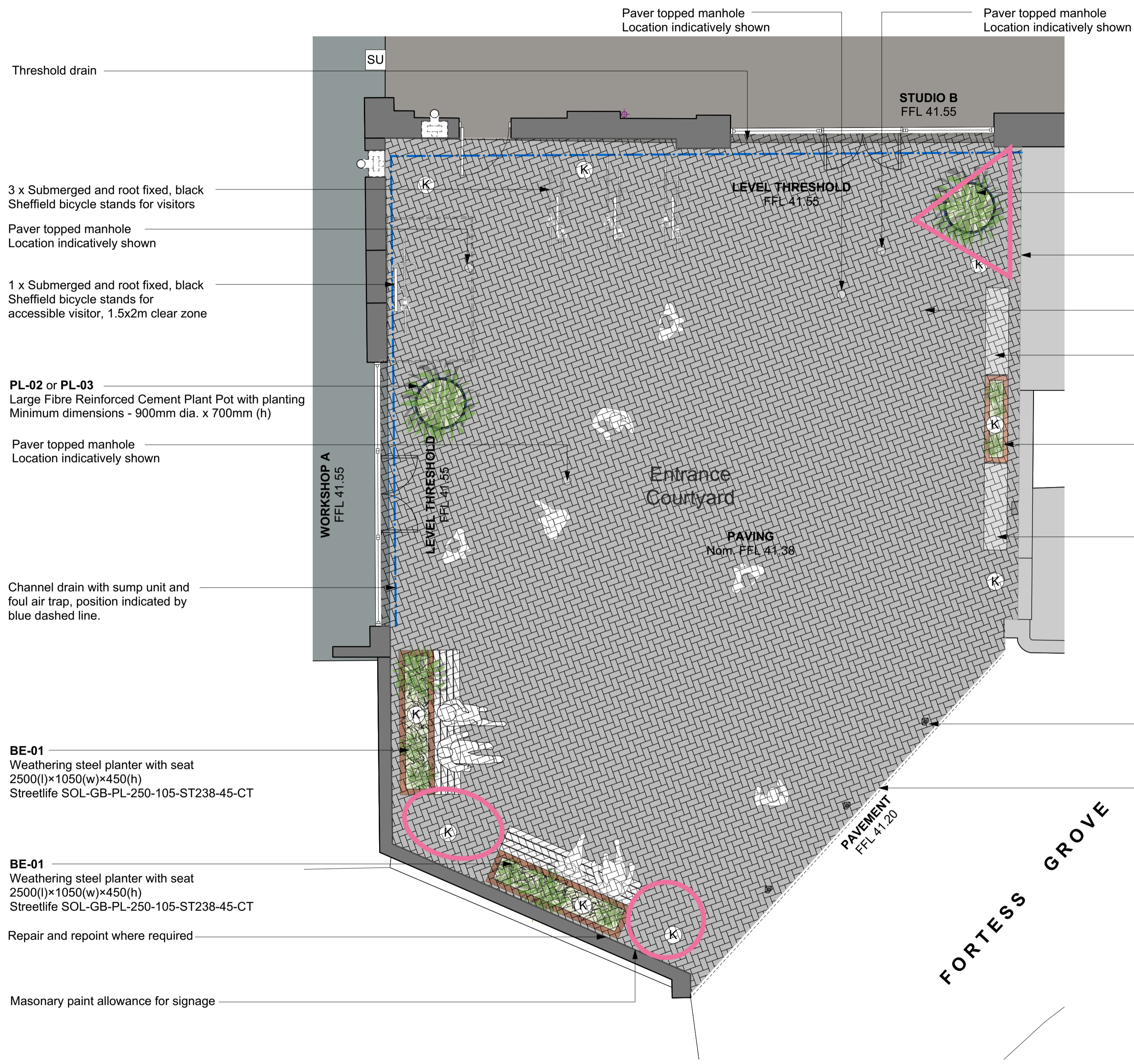




6 Location Plan  
Scale: 1:1000



Threshold drain

3 x Submerged and root fixed, black Sheffield bicycle stands for visitors

Paver topped manhole  
Location indicatively shown

1 x Submerged and root fixed, black Sheffield bicycle stands for accessible visitor, 1.5x2m clear zone

PL-02 or PL-03  
Large Fibre Reinforced Cement Plant Pot with planting  
Minimum dimensions - 900mm dia. x 700mm (h)

Paver topped manhole  
Location indicatively shown

Channel drain with sump unit and foul air trap, position indicated by blue dashed line.

BE-01  
Weathering steel planter with seat  
2500(l)x1050(w)x450(h)  
Streetlife SOL-GB-PL-250-105-ST238-45-CT

BE-01  
Weathering steel planter with seat  
2500(l)x1050(w)x450(h)  
Streetlife SOL-GB-PL-250-105-ST238-45-CT

Repair and repoint where required

Masonry paint allowance for signage

Paver topped manhole  
Location indicatively shown

STUDIO B  
FFL 41.55

LEVEL THRESHOLD  
FFL 41.55

Entrance  
Courtyard

PAVING  
Nom. FFL 41.38

PL-02 or PL-03  
Large Fibre Reinforced Cement Plant Pot with planting  
Minimum dimensions - 900mm dia. x 700mm (h)

Paint to masonry wall  
Colour RAL TBC

Herringbone paving - dark grey. Supplier: Hardscape.  
Range: Ares UWF Tumbled Clay Pavers

BE-02  
Concrete bench seat

PL-01  
Linear Corten Plant Pot with planting  
Minimum dimensions - 1500mm (l) x 400mm (h) x 400m (d)

BE-02  
Concrete bench seat

3 x fold-down bollards @ 1980mm centres

Grade paving down from level thresholds to pavement level.

PAVEMENT  
FFL 41.20

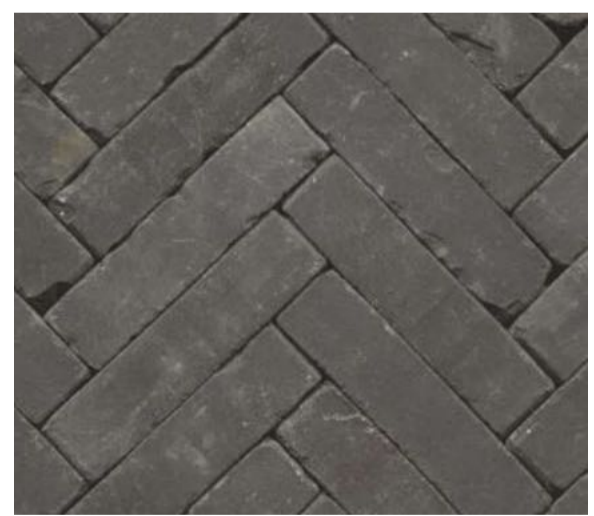
FORTESS GROVE

WORKSHOP A  
FFL 41.55

SU



(K) In-ground light fitting



PA-01  
Dark herringbone paving



BE-01  
Timber and corten bench seat with built-in planting  
(Similar to image)



BE-02  
Concrete bench seat



PL-01  
Linear corten planter



PL-02  
Square corten planter



PL-03  
Circular concrete planter

4 Courtyard Plan  
Scale: 1:50



**DRAWING NOTES:**  
All dimensions to be checked on site prior to commencement of any works, and/or preparation of any shop drawings.  
Sizes of and dimensions to any structural elements are indicative only. See structural engineers drawings for actual sizes/dimensions.  
Sizes of and dimensions to any service elements are indicative only. See service engineers drawings for actual sizes and dimensions.  
This drawing to be read in conjunction with all other Architect's drawings, specifications and other Consultants' information.  
All proprietary systems shown on this drawing are to be installed strictly in accordance with the Manufacturers/Suppliers recommended details.  
Any discrepancies between information shown on this drawing and any other contract information or manufacturers/suppliers recommendations is to be brought to the attention of the Architect.  
DO NOT SCALE FROM THIS DRAWING.

**DRAFT LAYOUT FOR COMMENT**  
**25.02.2022**  
**CLIENT REQUEST**

R4	ACCESSIBLE CYCLE SPACE ADDED	25.02.2022
R3	DRAINAGE & OUTDOOR FURNITURE ADDED	22.11.2021
R2	REVISED FOR VE	04.11.2021
R1	FOR INFORMATION	19.07.2021
STATUS	REVISION	DATE

DRAWING <b>Ground Floor Plan Courtyard</b>	
SCALE 1:100 @ A1 (1:200 @ A3)	DRAWING FILE REF 1014-GA-Floor Plans
DATE Nov 2021	DRAWN BY LH
DWG No. 1014-PL_GA-00-YardR4	REVISION R4
DRAWING STATUS <b>FOR INFORMATION</b>	

**Buckley Gray Yeoman**  
Studio 4.04 The Tea Building 56 Shoreditch High Street  
London E1 6J T: 020 7033 9913 F: 020 7033 9914

CLIENT  
**Fortess 2016 Ltd**

PROJECT  
**Workshop A, Fortess Grove**