

NO DIMENSIONS TO BE SCALED FROM THIS DRAWING

CDM - RESIDUAL HAZARDS The following are considered to be significant risks relevant to this drawing, which could not be fully mitigated or removed through design:

P03	Change of Use - Planning issue	19.04.22	VG	JS
P02	Change of Use to dual use - Planning issue	24.11.21	VG	JS
P01	Change of Use - Planning issue	23.11.21	VG	JS
Revision		Date	Drn	Chk

Client

University of London

Project

Dilke House
1 Malet Street, London, WC1E 7JN

Drawing Title

GA-B1 Lower Ground Floor
Proposed General Arrangement Plan

Suitability Status

Job No.	Scale	Size	Rev
200083	1:100	@ A3	P03

Drawing Number

UOL-PEV-DH-B1-DR-A-1240

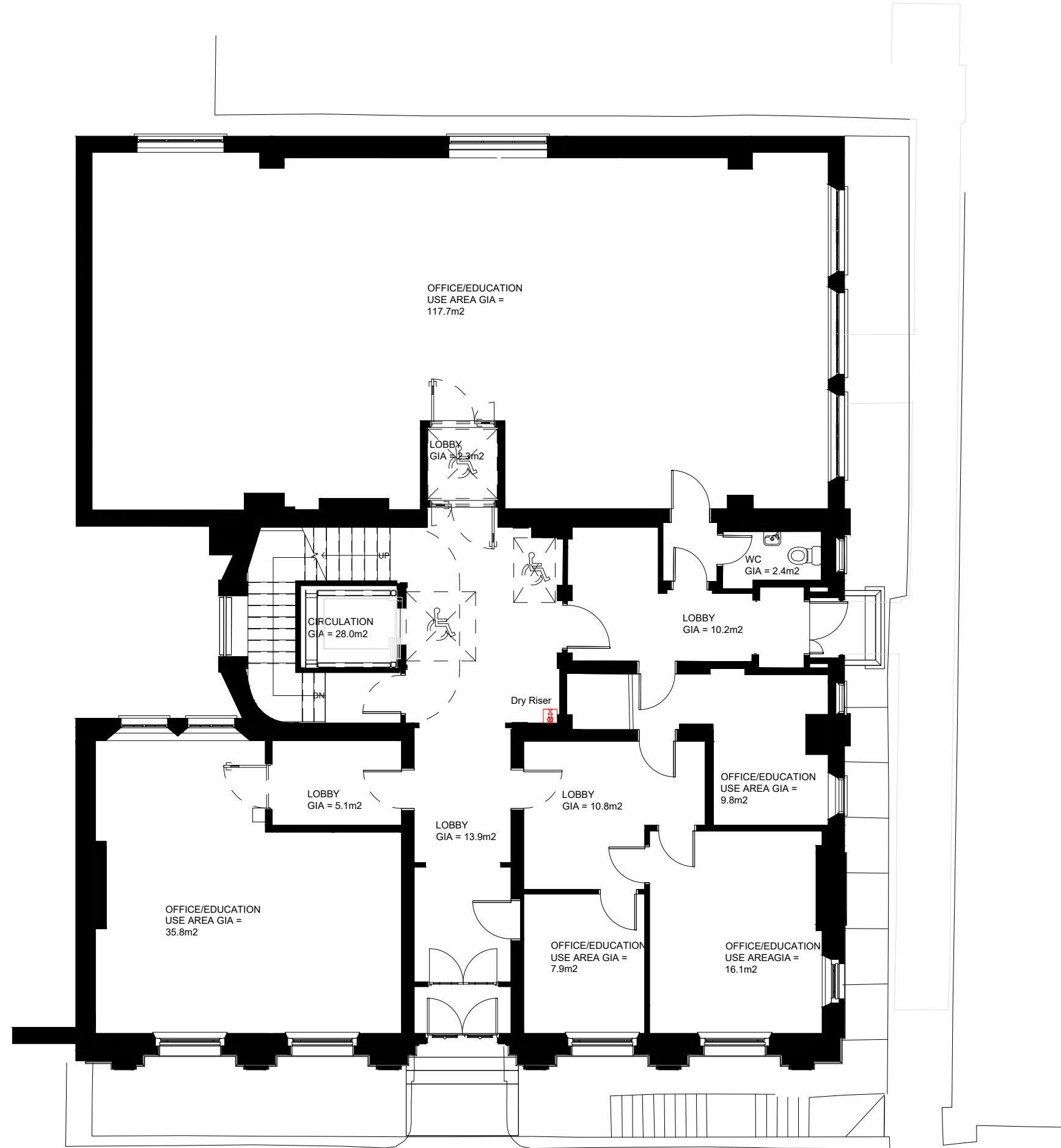
Project Code - Originator - Zone - Level - Type - Role - Number

PICK
EVERARD

T 0345 045 0050

www.pickeverard.co.uk

This drawing is issued for the sole and exclusive use of the intended recipient and is subject to copyright in favour of Pick Everard. Pick Everard does not accept any responsibility or liability whatsoever for its use by a person other than the intended recipient.



NO DIMENSIONS TO BE SCALED FROM THIS DRAWING

CDM - RESIDUAL HAZARDS The following are considered to be significant risks relevant to this drawing, which could not be fully mitigated or removed through design:

P02	Change of Use to Dual Use - Planning issue	24.11.21	VG	JS
P01	Change of Use - Planning issue	23.11.21	VG	JS
Revision		Date	Drn	Chk

Client

University of London

Project

Dilke House
1 Malet Street, London, WC1E 7JN

Drawing Title

GA-L00 Ground Floor
Proposed General Arrangement Plan

Suitability Status

Job No.	Scale	Size	Rev
200083	1:100	@ A3	P02

Drawing Number

UOL-PEV-DH-00-DR-A-1241

Project Code - Originator - Zone - Level - Type - Role - Number

PICK
EVERARD

T 0345 045 0050

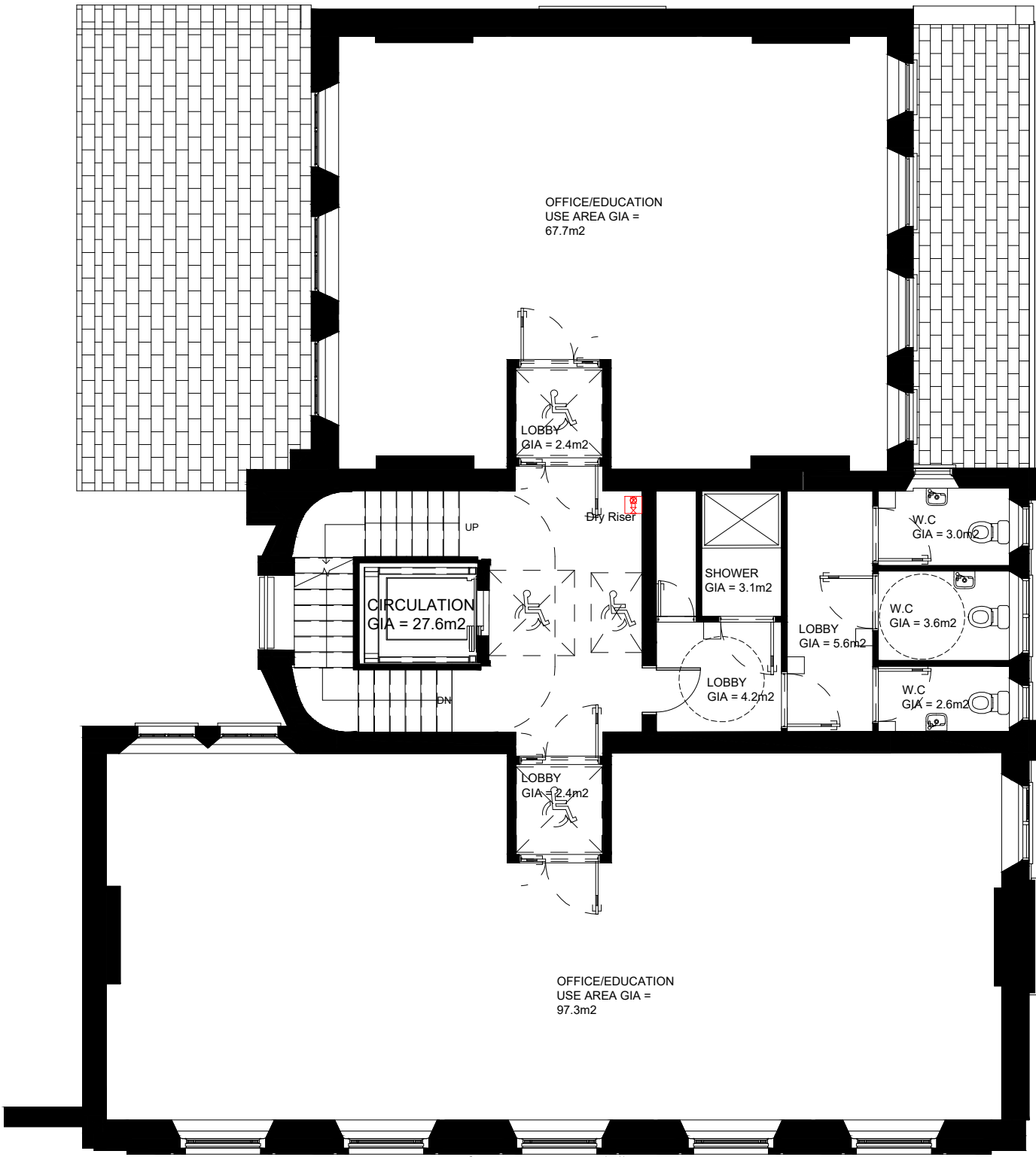
www.pickeverard.co.uk

This drawing is issued for the sole and exclusive use of the intended recipient and is subject to copyright in favour of Pick Everard. Pick Everard does not accept any responsibility or liability whatsoever for its use by a person other than the intended recipient.



NO DIMENSIONS TO BE SCALED FROM THIS DRAWING

CDM - RESIDUAL HAZARDS The following are considered to be significant risks relevant to this drawing, which could not be fully mitigated or removed through design:



P02	Change of Use To Dual Use - Planning issue	24.11.21	VG	JS
P01	Change of Use - Planning issue	23.11.21	VG	JS
Revision		Date	Dm	Chk

Client

University of London

Project

Dilke House
1 Malet Street, London, WC1E 7JN

Drawing Title

GA-L01 First Floor
Proposed General Arrangement Plan

Suitability Status

Job No.	Scale	Size	Rev
200083	1:100	@ A3	P02

Drawing Number

UOL-PEV-DH-01-DR-A-1242

Project Code - Originator - Zone - Level - Type - Role - Number

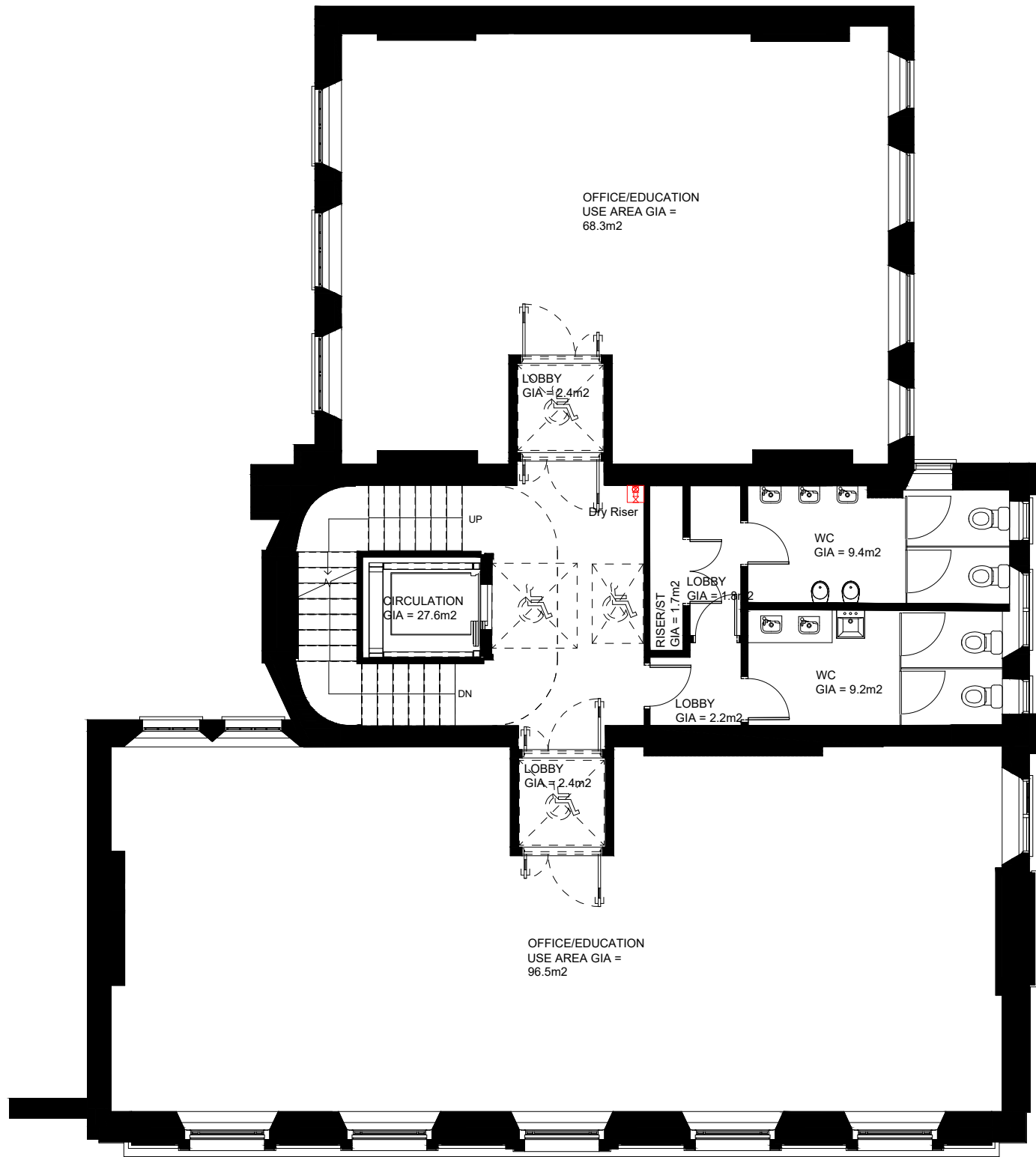
PICK
EVERARD

T 0345 045 0050

www.pickeverard.co.uk

This drawing is issued for the sole and exclusive use of the intended recipient and is subject to copyright in favour of Pick Everard. Pick Everard does not accept any responsibility or liability whatsoever for its use by a person other than the intended recipient.





NO DIMENSIONS TO BE SCALED FROM THIS DRAWING

CDM - RESIDUAL HAZARDS The following are considered to be significant risks relevant to this drawing, which could not be fully mitigated or removed through design:

P03	Change of Use - Planning issue	16.02.22	VG	JS
P02	Change of Use To Dual Use - Planning issue	24.11.21	VG	JS
P01	Change of Use - Planning issue	23.11.21	VG	JS
Revision		Date	Dm	Chk

Client

University of London

Project

Dilke House
1 Malet Street, London, WC1E 7JN

Drawing Title

GA-L02 Second Floor
Proposed General Arrangement Plan

Suitability Status

Job No.	Scale	Size	Rev
200083	1:100	@ A3	P03

Drawing Number

UOL-PEV-DH-02-DR-A-1243

Project Code - Originator - Zone - Level - Type - Role - Number

PICK
EVERARD

T 0345 045 0050

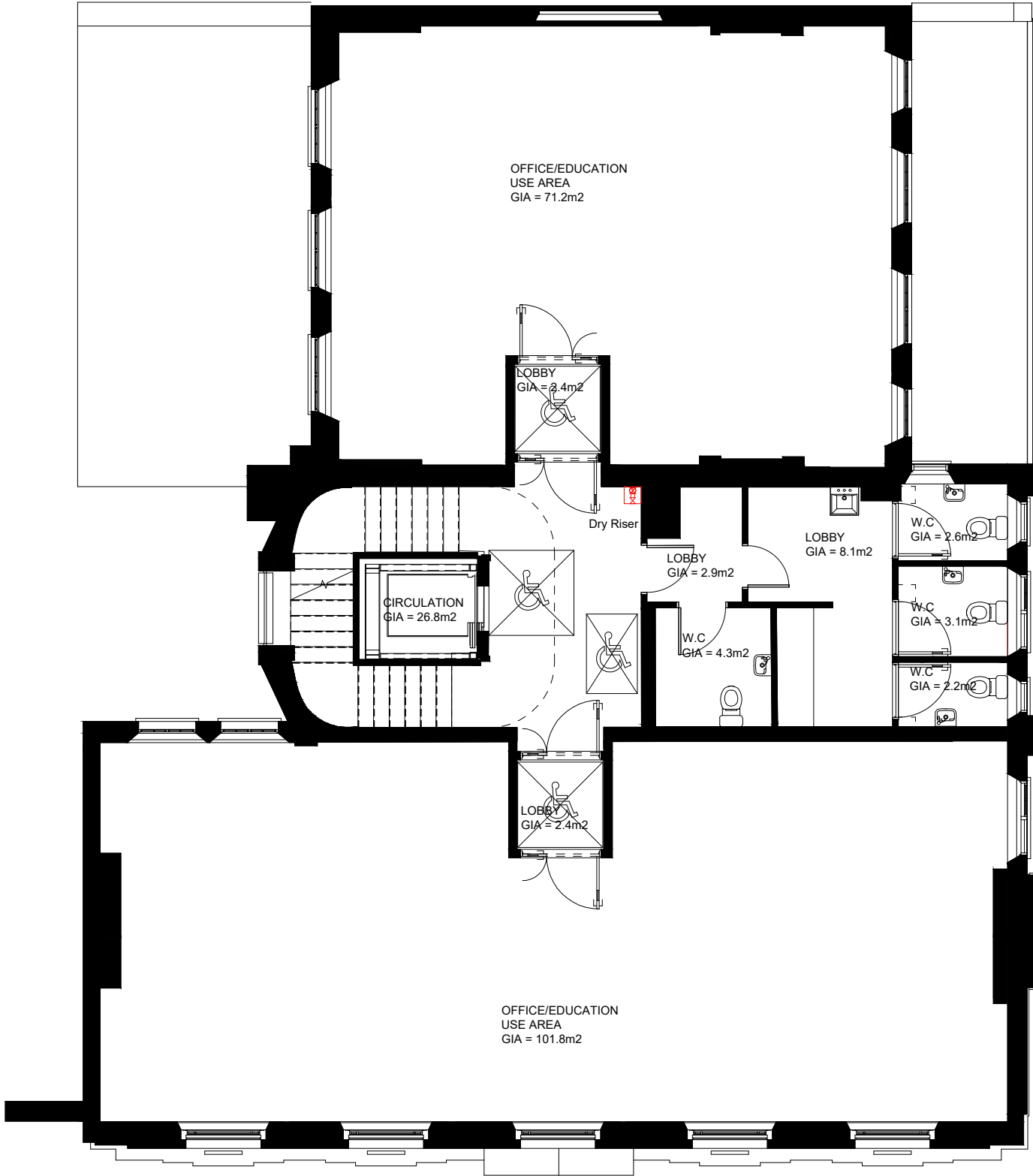
www.pickeverard.co.uk

This drawing is issued for the sole and exclusive use of the intended recipient and is subject to copyright in favour of Pick Everard. Pick Everard does not accept any responsibility or liability whatsoever for its use by a person other than the intended recipient.



NO DIMENSIONS TO BE SCALED FROM THIS DRAWING

CDM - RESIDUAL HAZARDS The following are considered to be significant risks relevant to this drawing, which could not be fully mitigated or removed through design:



Revision	Date	Drm	Chk
P03	16.2.22	VG	JS
P02	24.11.21	VG	JS
P01	23.11.21	VG	JS

Client
University of London

Project
Dilke House
1 Malet Street, London, WC1E 7JN
Drawing Title
GA-L03 Third Floor
Proposed General Arrangement Plan

Suitability Status

Job No. 200083 Scale 1:100 Size @ A3 Rev P03

Drawing Number
UOL-PEV-DH-03-DR-A-1244

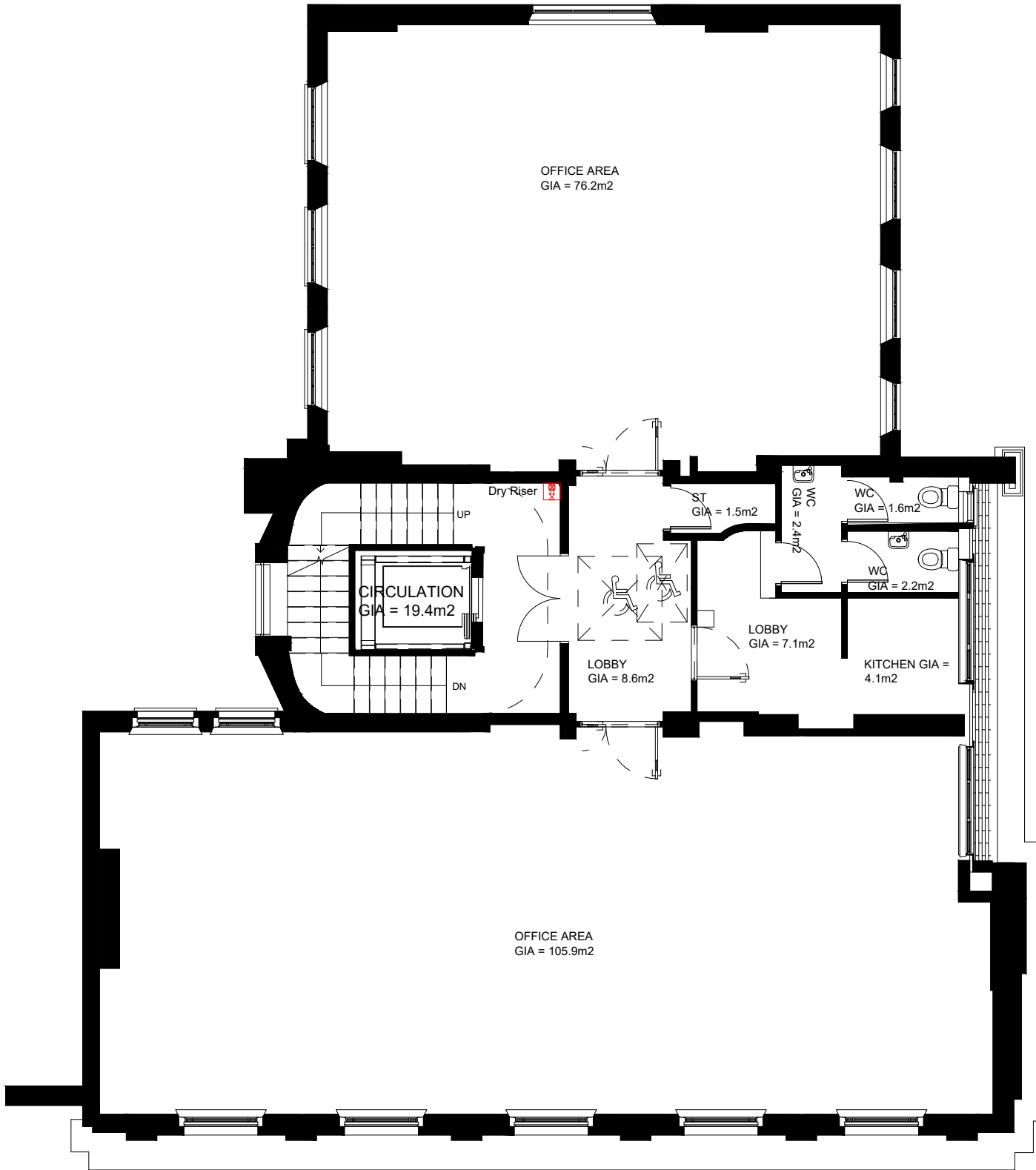
Project Code - Originator - Zone - Level - Type - Role - Number

PICK
EVERARD

T 0345 045 0050 www.pickeverard.co.uk

This drawing is issued for the sole and exclusive use of the intended recipient and is subject to copyright in favour of Pick Everard. Pick Everard does not accept any responsibility or liability whatsoever for its use by a person other than the intended recipient.





NO DIMENSIONS TO BE SCALED FROM THIS DRAWING

CDM - RESIDUAL HAZARDS The following are considered to be significant risks relevant to this drawing, which could not be fully mitigated or removed through design:

P03	Change of Use - Planning Issue	16.2.22	VG	JS
P02	Change of Use To Dual Use - Planning Issue	24.11.21	VG	JS
P01	Change of Use - Planning Issue	23.11.21	VG	JS
Revision		Date	Drn	Chk

Client

University of London

Project

Dilke House
1 Malet Street, London, WC1E 7JN

Drawing Title

GA-L04 Fourth Floor
Proposed General Arrangement Plan

Suitability Status

Job No.	Scale	Size	Rev
200083	1:100	@ A3	P03

Drawing Number

UOL-PEV-DH-04-DR-A-1245

Project Code - Originator - Zone - Level - Type - Role - Number

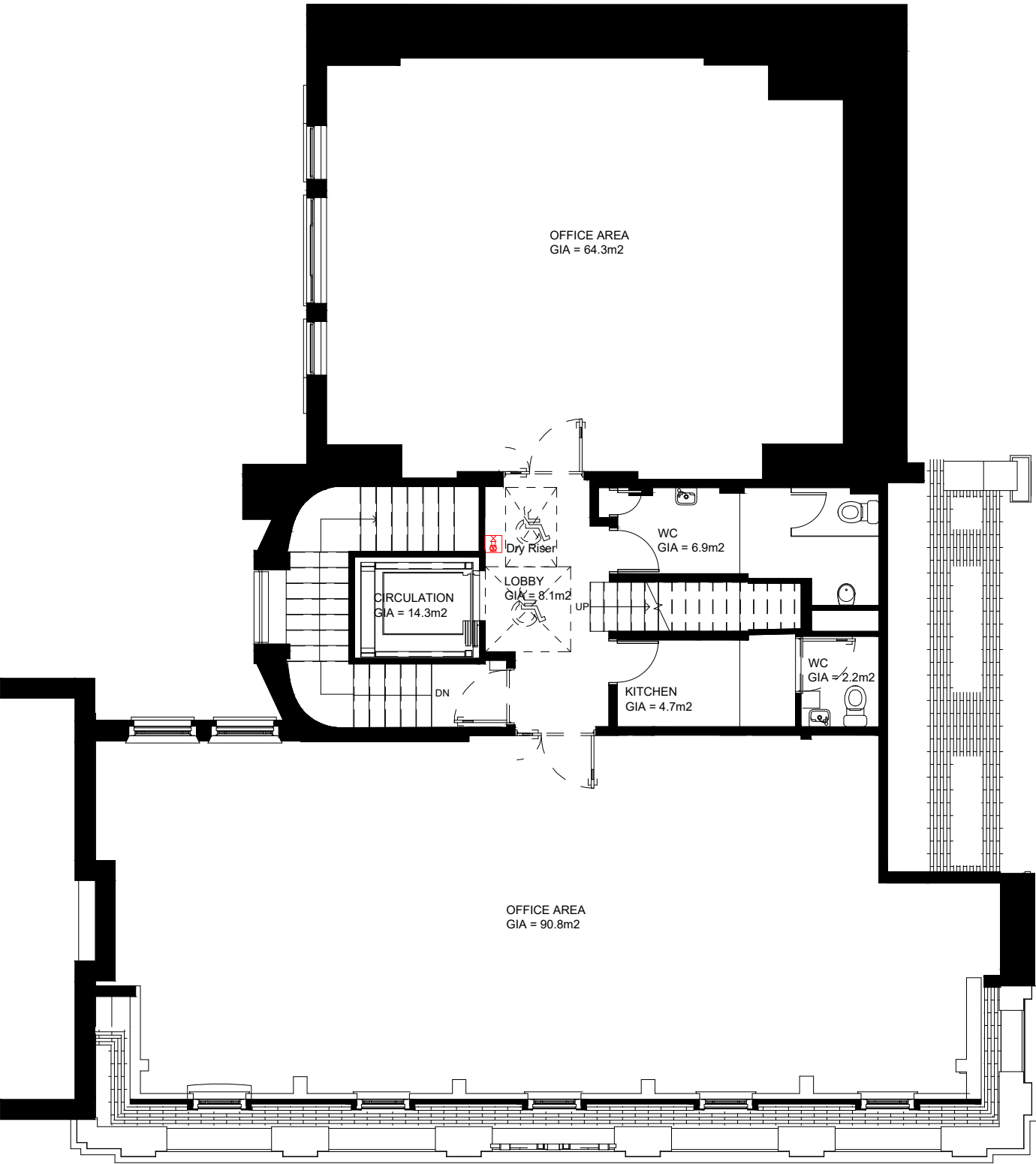
PICK
EVERARD

T 0345 045 0050

www.pickeverard.co.uk

This drawing is issued for the sole and exclusive use of the intended recipient and is subject to copyright in favour of Pick Everard. Pick Everard does not accept any responsibility or liability whatsoever for its use by a person other than the intended recipient.





NO DIMENSIONS TO BE SCALED FROM THIS DRAWING

CDM - RESIDUAL HAZARDS The following are considered to be significant risks relevant to this drawing, which could not be fully mitigated or removed through design:

P03	Change of Use - Planning issue	16.02.22	VG	JS
P02	Change of Use To Dual Use - Planning issue	24.11.21	VG	JS
P01	Change of Use - Planning issue	23.11.21	VG	JS
Revision		Date	Drm	Chk

Client

University of London

Project

Dilke House
1 Malet Street, London, WC1E 7JN

Drawing Title

GA-L05 Fifth Floor
Proposed General Arrangement Plan

Suitability Status

Job No.	Scale	Size	Rev
200083	1:100	@ A3	P03

Drawing Number

UOL-PEV-DH-05-DR-A-1246

Project Code - Originator - Zone - Level - Type - Role - Number

PICK
EVERARD

T 0345 045 0050

www.pickeverard.co.uk

This drawing is issued for the sole and exclusive use of the intended recipient and is subject to copyright in favour of Pick Everard. Pick Everard does not accept any responsibility or liability whatsoever for its use by a person other than the intended recipient.

