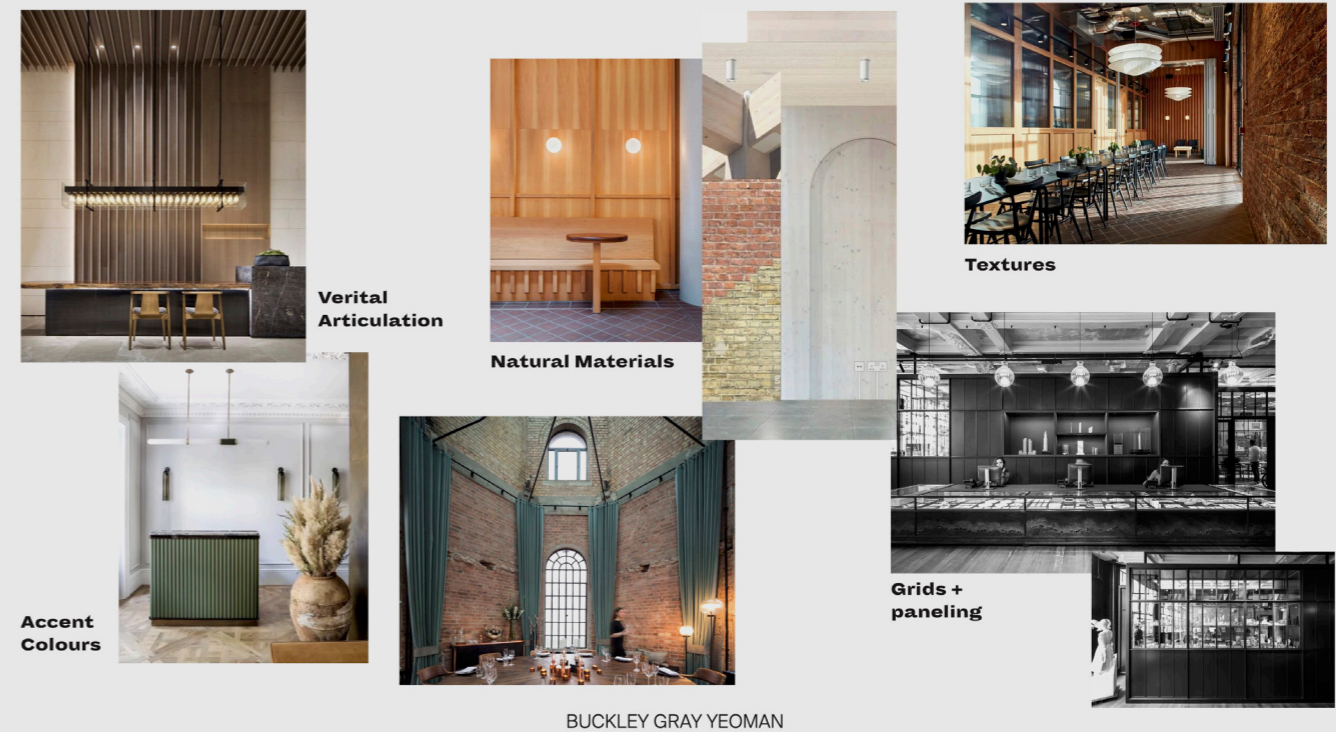


## 6.05 Materiality

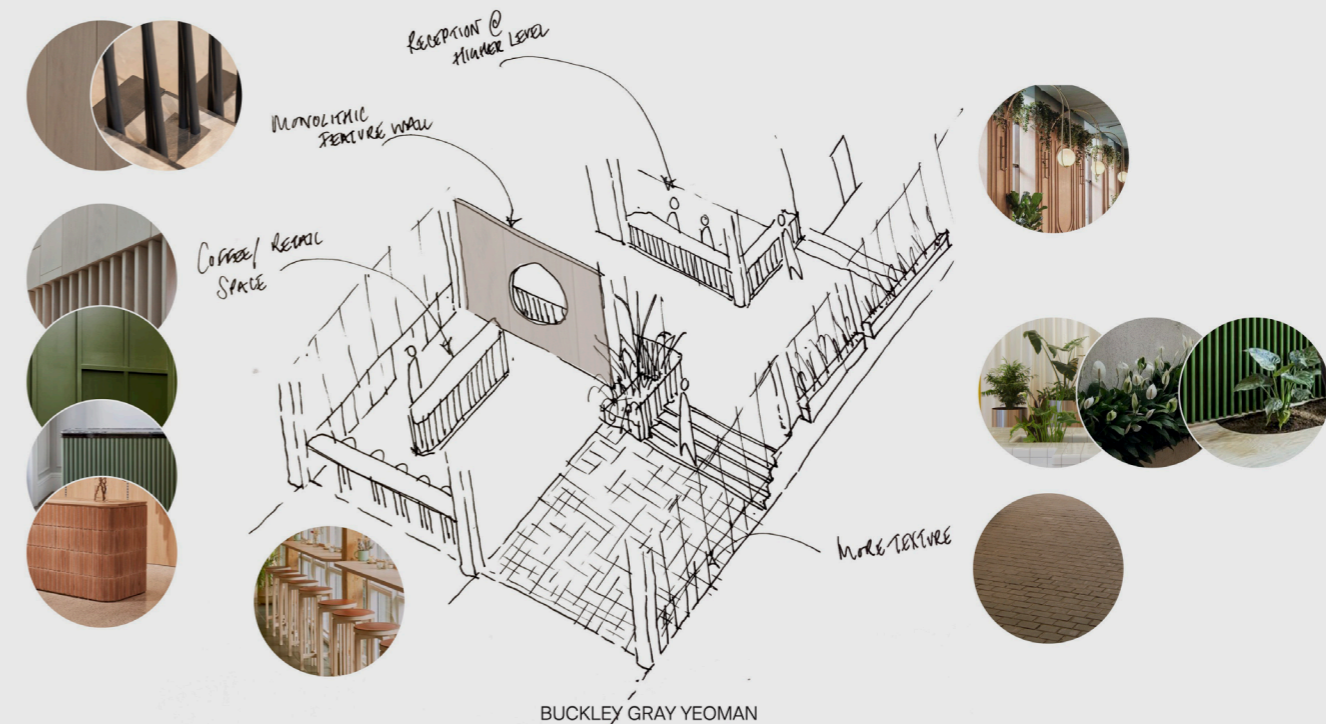
The internal finishes and design of the interventions has also remained rather consistent with strong ideas of relating to the existing fabric of the building with materials that are consistent yet contemporary. So as to delineate any intervention from the existing without being heavily contrasted.

As such the palette of interventions is simple and consistent, with bronze metal for fenestration, balustrades and lighting & timber for furnishings & feature elements. Otherwise the materials are the existing palette of Brick & concrete; with some new elements being made using this, such as an upgraded polished concrete floor (to replace the more industrial screed on the loading bay) & concrete sets to provide further texture.

### GP Precedents - Look + Feel Precedents



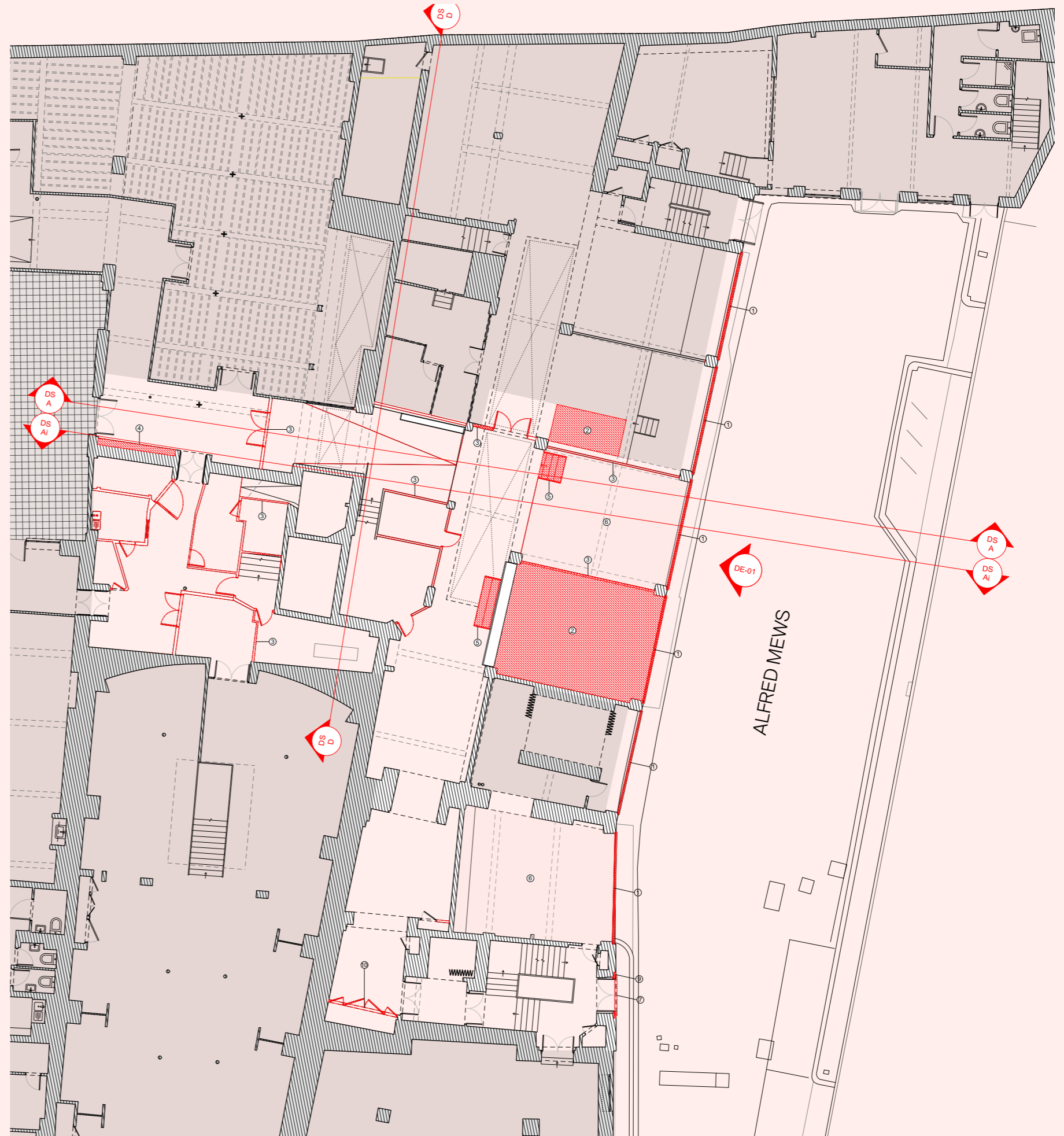
### Alfred Mews Entrance Concept Sketch



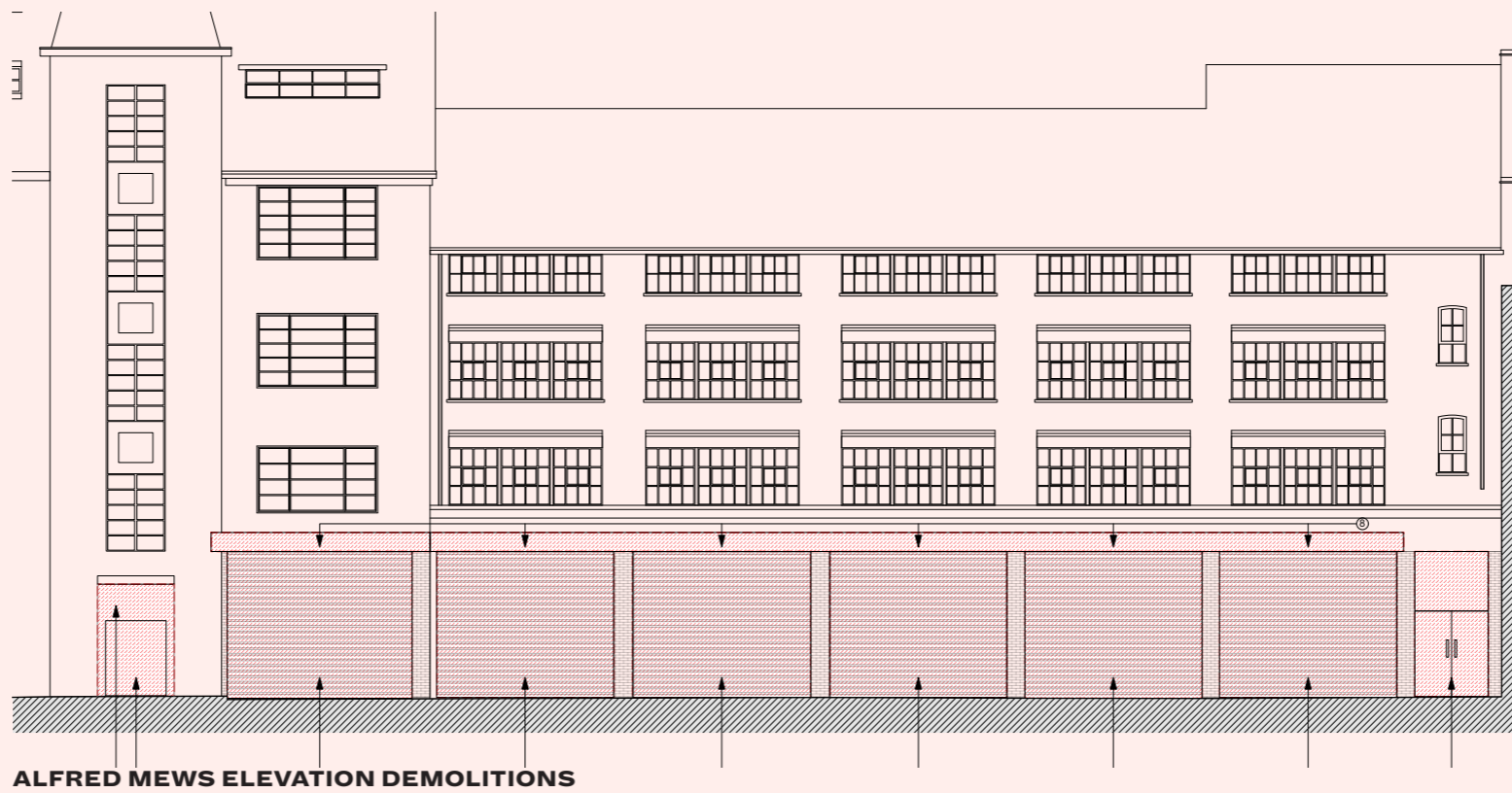
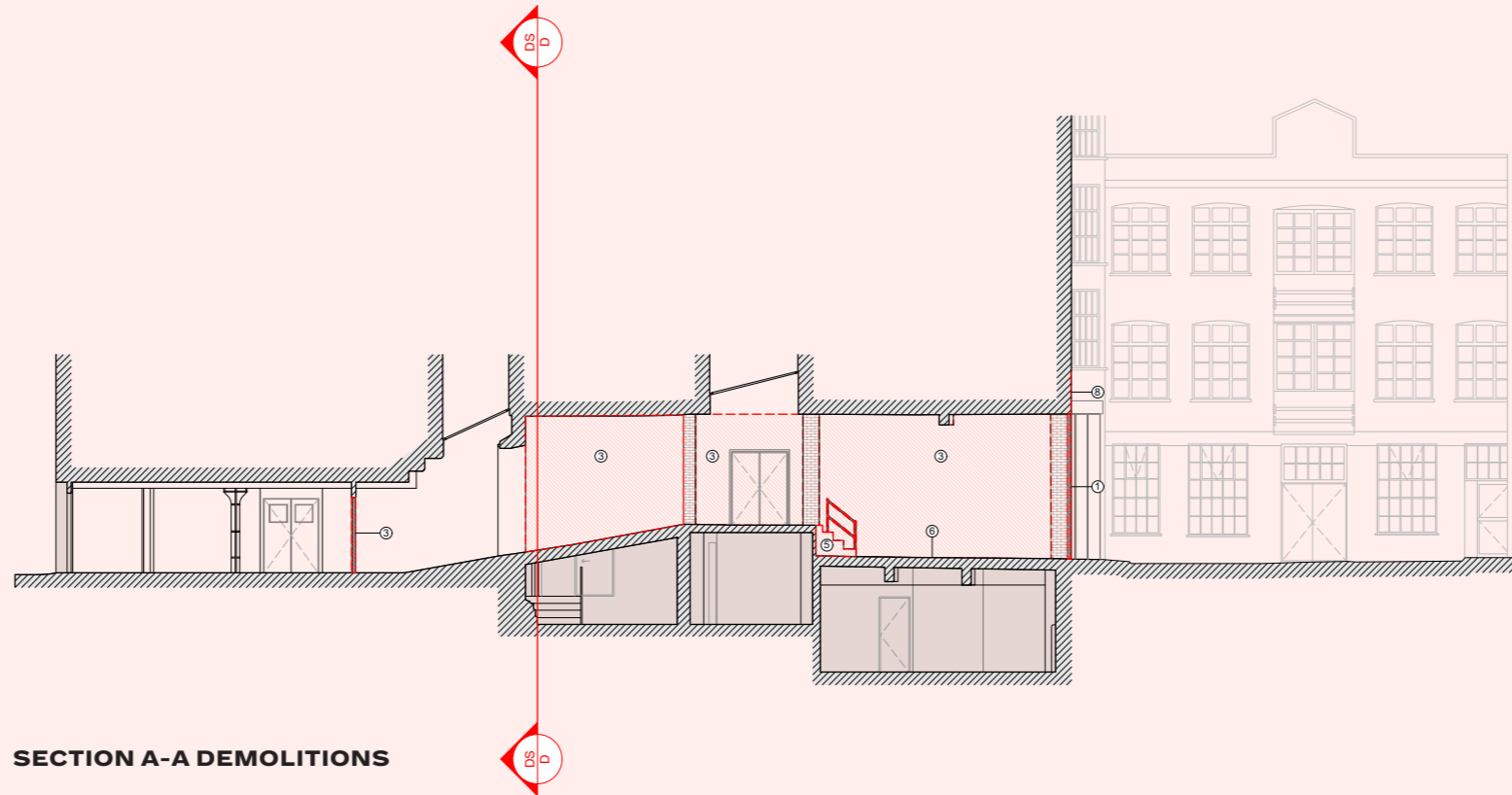
## 6.06 Demolitions

As previously mentioned the majority of demolitions focus on removing secondary elements and modern interventions, such as the partitions in Hall 0.5; the raised floor & steps in Loading Bay 1. Whilst the main existing structure remains.

The facade will be completely upgraded, with all the roller shutters carefully removed so as to be replaced by contemporary fenestration & shutters.



GROUND FLOOR  
DEMOLITIONS





## 6.07 Proposals

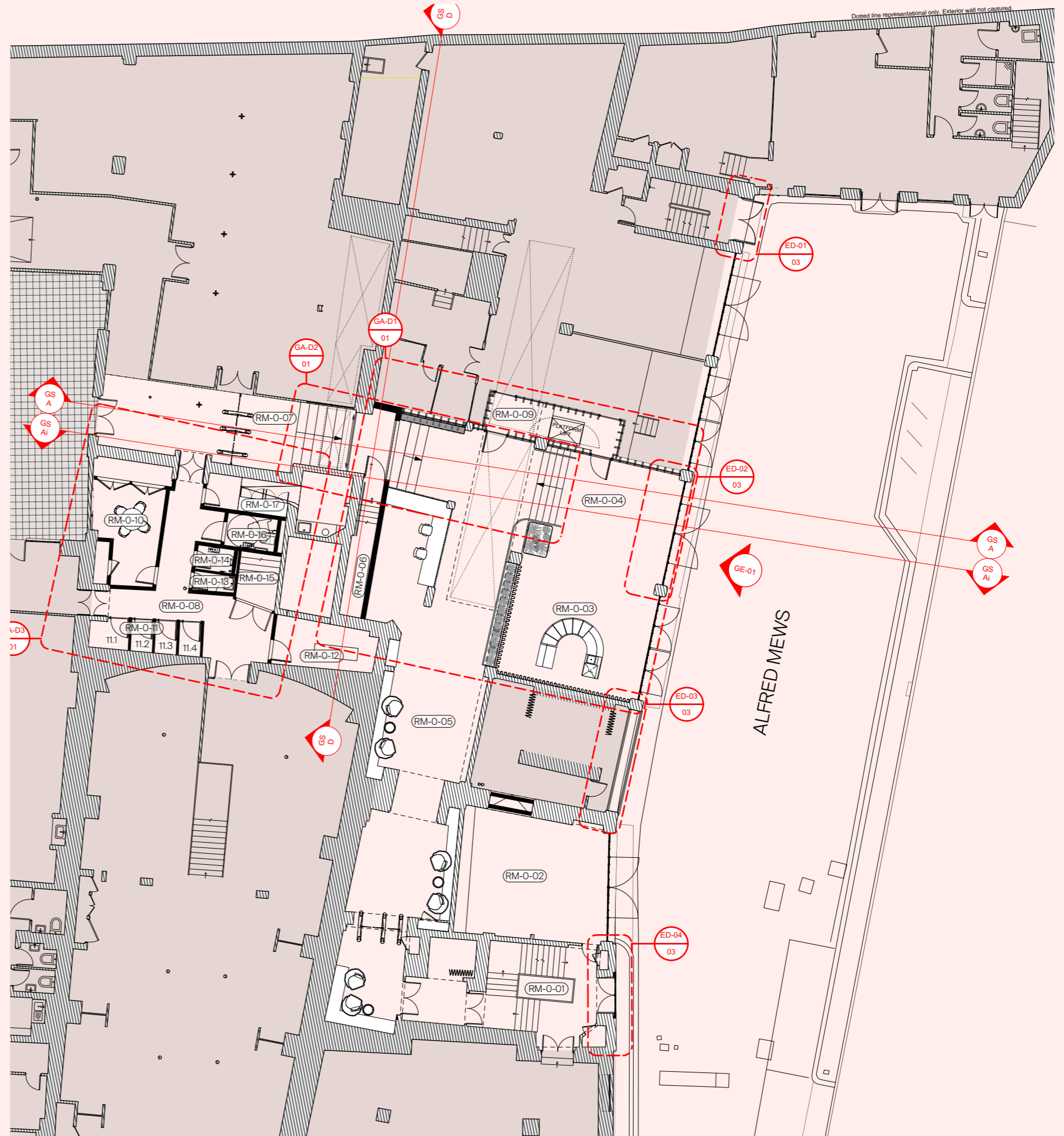
The new Alfred Mews facade features a series of new metal framed windows and doors that infill all the loading bays, bar the retained Heals Service lift bay, which has a new metal roller shutter, this time fitted internally. The new fitting of these facade elements is all set back to expose the brick piers on the street.

Once we remove the modern interventions we open up the main entrance area as a flexible space for multiple uses. This can accommodate a servery, seating, meeting points, and room for circulation. Moving on from there we find a more formalised reception desk situated below the rooflights, with a new partition to the rear access stair to the basement.

A platform lift is introduced behind a fire-rated screen that matches the facade fenestration, allowing for accessible entry into the building.

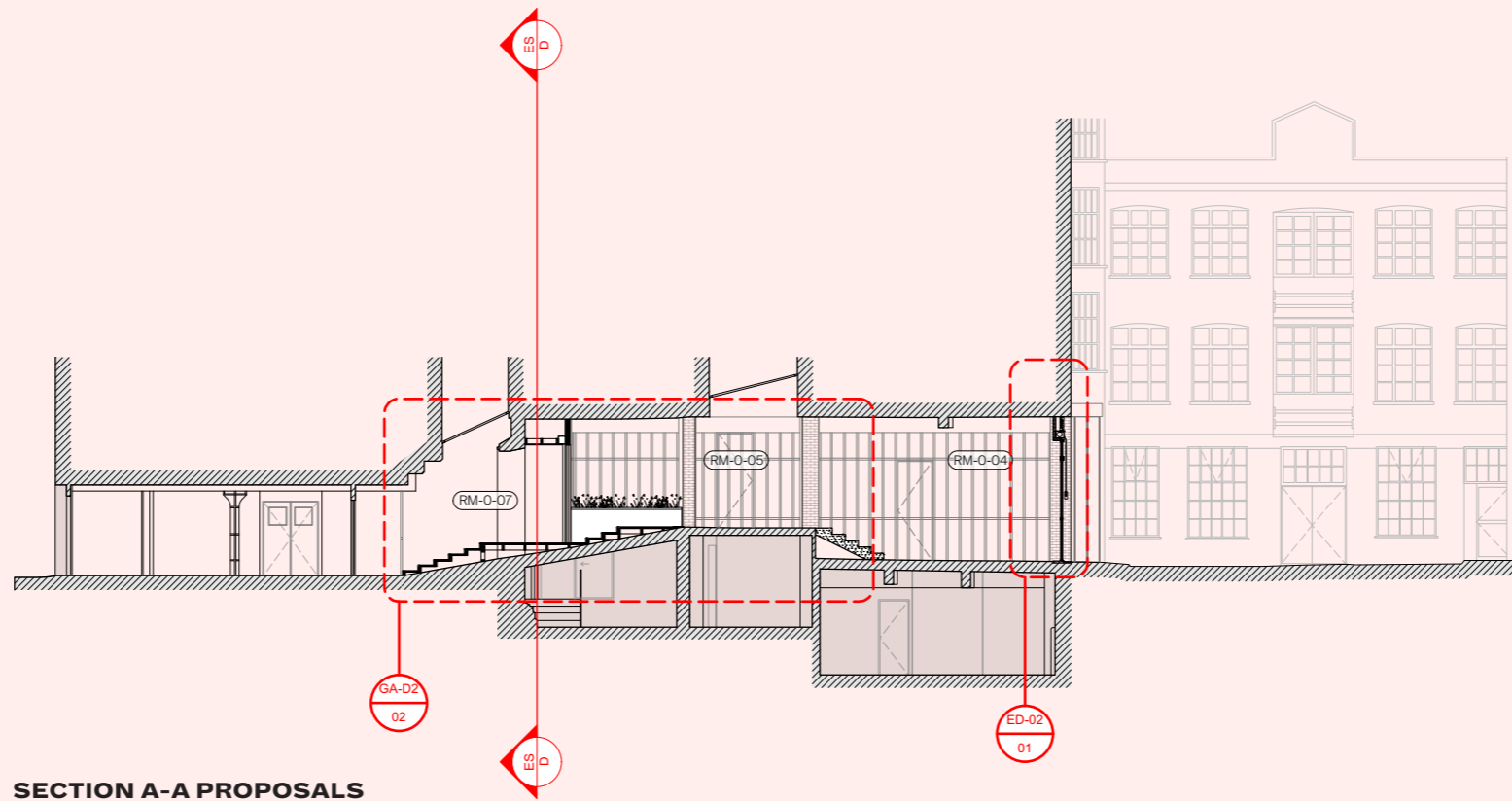
The rear section is then split into both BoH uses of WCs & storage, as well as small & medium meeting rooms to be utilised by the commercial spaces on the upper floors. The new arrangement here also looks to widen the fire exit from the stair to be now compliant with the exit strategy, otherwise the main structure is maintained and areas of damage repaired.

GROUND FLOOR  
PROPOSALS



BUCKLEY GRAY YEOMAN





**SECTION A-A PROPOSALS**



**ALFRED MEWS ELEVATION PROPOSALS**

## 6.08 Proposed Materials

The existing fabric is made up of a number of materials; with brick, concrete & steel structures; metal & timber doors, along with concrete & timber floors.

With this we wished to define a more simple palette, that was distinct to the existing; through colour and finish, yet sympathetic; in tone and composition.

To achieve this the main materials of choice are stained timber, Bronze coloured metals & concrete. Materials that are both of the building, and its style; yet the way that we introduce them is more contemporary with a nod to the proportioning of the existing. The best example of which is in the new fenestration to Alfred Mews.



Stairs - Concrete/Timber/Bronze



Lighting



Timber



Flooring - Sets & Polished Concrete



Furnishings





Existing Brick piers exposed, repaired and made good.

New Bronze coloured metal fenestration to the Alfred Mews facade.

New Polished Concrete Screed to match existing and replace more industrial existing screed in the lower section.

New Concrete sets in main access area, to delineate the space, add texture and define new interventions.

Existing Gantry crane retained and painted to highlight

Mounted services so as to maintain exposed existing concrete ceiling & structure.

New fire rated curtain material to surround cafe area. Held on Bronze coloured rails.

New Timber desk to match finishes of Torrington Place Reception

Existing Concrete floor made good & polished.

New Bronze coloured metal handrail to match finish of proposed Alfred mews Fenestration

New Concrete Stairs, to match finish of existing upper level concrete screed.



## 6.09 Alfred Mews Facade Development

One of the critical features of this applications proposals; are the changes to the facade on Alfred Mews.

The existing condition is in a rather poor state, with the majority of what was, historically, an elegant open yard, is now covered in poor quality metal roller shutters, that are unsympathetically face fixed onto the stone lintel and brick piers.

Our first and simple approach was to remove these and reveal the original fabric.

From then we looked at a number of approaches to the fenestration arrangement, however always taking cues from the existing and historical industrial/crittall style windows of the rest of the facade, as well as the Art Deco metal framed glazing of the Heal's Interior structures of the main access stair.

The fenestration arrangement then have adapted to meet requirements of ventilation, heating/colling and access.

Additionally the placement of these new interventions has been carefully considered, so they are located at the rear of the main structures, so as to best expose them to the frontage, as well as bring depth to those lower bays, as they would have when open. Also the retained space that will have a roller shutter, will have this internally fixed, so as to limit its impact on the facade, and allow for that lintel to remain consistent & uninterrupted.



Historic Facade



Current Facade