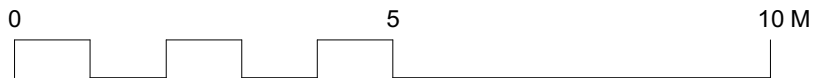
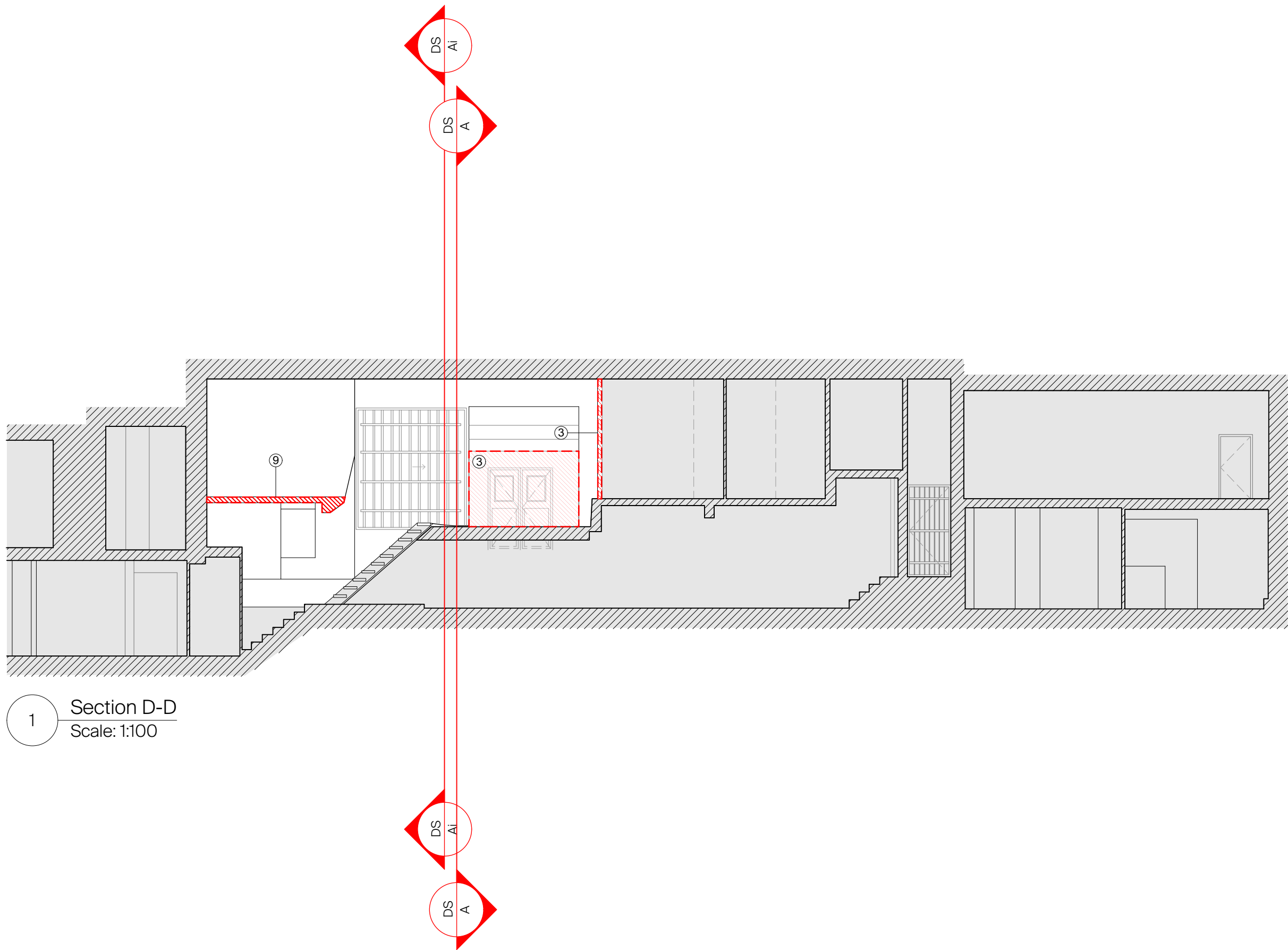




#### Schedule of Works

- ① Carefully remove existing metal rollershutters and guides. Make good any damage to existing brick piers and stone lintels.
- ② Remove existing raised timber deck to existing slab level.
- ③ Remove studwork partitions. Make good the connections to existing structure.
- ④ Remove timber panels that cover redundant service void to expose existing structural wall.
- ⑤ Remove timber stair structure to existing brick and concrete structure. Make good any damage.
- ⑥ Remove existing concrete screed to slab level.
- ⑦ Remove opening to the fire stair
- ⑧ Remove surface mounted services to fascia
- ⑨ Remove timber floor structure to form open space above basement access stair



© Buckley Gray Yeoman Ltd.

All dimensions to be checked on site prior to commencement of any works, and/or preparation of any shop drawings. Sizes of and dimensions to any structural elements are indicative only. See structural engineers drawings for actual sizes/dimensions. Sizes of and dimensions to any service elements are indicative only. See service engineers drawings for actual sizes and dimensions.  
This drawing to be read in conjunction with all other Architect's drawings, specifications and other Consultants' information. All proprietary systems shown on this drawing are to be installed strictly in accordance with the Manufacturers/Suppliers recommended details.  
Any discrepancies between information shown on this drawing and any other contract information or manufacturers/suppliers recommendations is to be brought to the attention of the Architect.

DO NOT SCALE FROM THIS DRAWING.

#### DRAWING NOTES:

AREA OUTSIDE OF SCOPE OF THIS APPLICATION



Demolition of partitions



Removal of surface finishes



Removal of additional floor structures

P1 06.05.22 Issued for Planning  
REV. DATE NOTE

DRAWN

CLIENT  
**General Projects**

PROJECT  
**Heal's Building**

DWG No.  
**1215\_PL3i-DS-DD**

DRAWING  
**Demolition Section D-D**

STATUS  
**PLANNING**

SCALE  
**1:100 @ A1  
1:200 @ A3**

APPROVED  
**NJ**

DATE  
**May 2022**

**BGY**

BUCKLEY GRAY YEOMAN  
+ 44 20 7033 9913  
BGY.CO.UK