

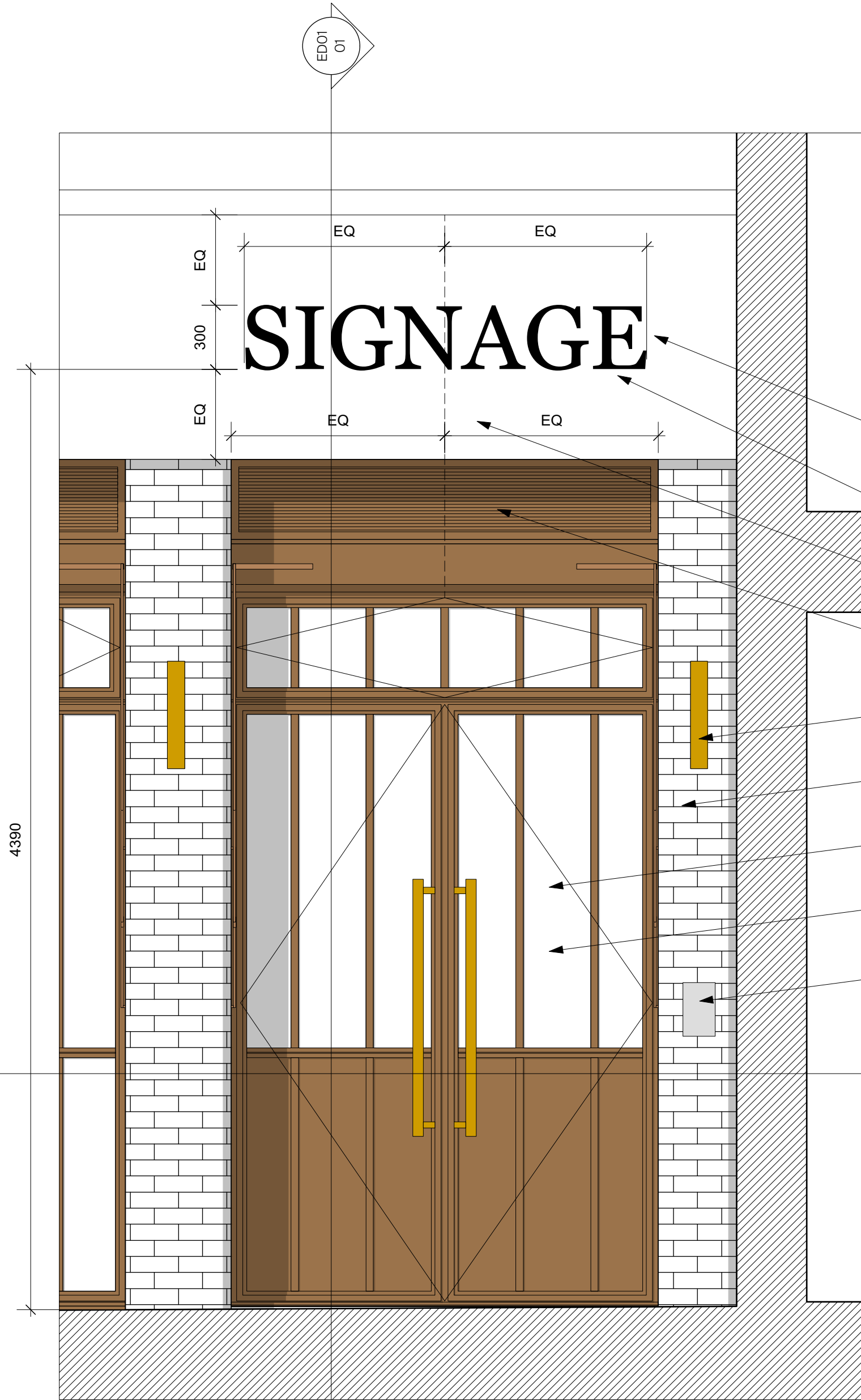
01 Section B-B
Scale: 1:20

Existing metal roller-shutters and facade mounted services to be removed; any damage to Stone Lintel to be repaired and made good. Processes to be determined once area is uncovered.

New metal doors & windows with bronze finish. Fitted inline with end of rear curved chamfer of brick pier. With a fenestration style inspired by the Art Deco/Light Industrial stylings of the Alfred Mews Facade & the internal staircase of the Heal's Store.

Brickwork Piers to be repaired, made good & all paint to be removed. Processes to be determined once area is uncovered.

New threshold strip to be fitted between piers once existing concrete screed is removed. Detail to be developed following completion of local opening up works



02 Alfred Mews Elevation
Scale: 1:20

SIGNAGE

Non-illuminated signage with a projection of 35mm

New metal signage with bronze finish to match style and layout of historic text. Upon main entrance reads 'UPHOLSTERY WORKSHOPS & DISPATCH' Other Signs are TBD by future occupants.

Existing metal roller-shutters and facade mounted services to be removed; any damage to Stone Lintel to be repaired and made good. Processes to be determined once area is uncovered.

Metal louvres with bronze finish, fitted within door & window framing, to provide intake & extract for ventilation of interior.

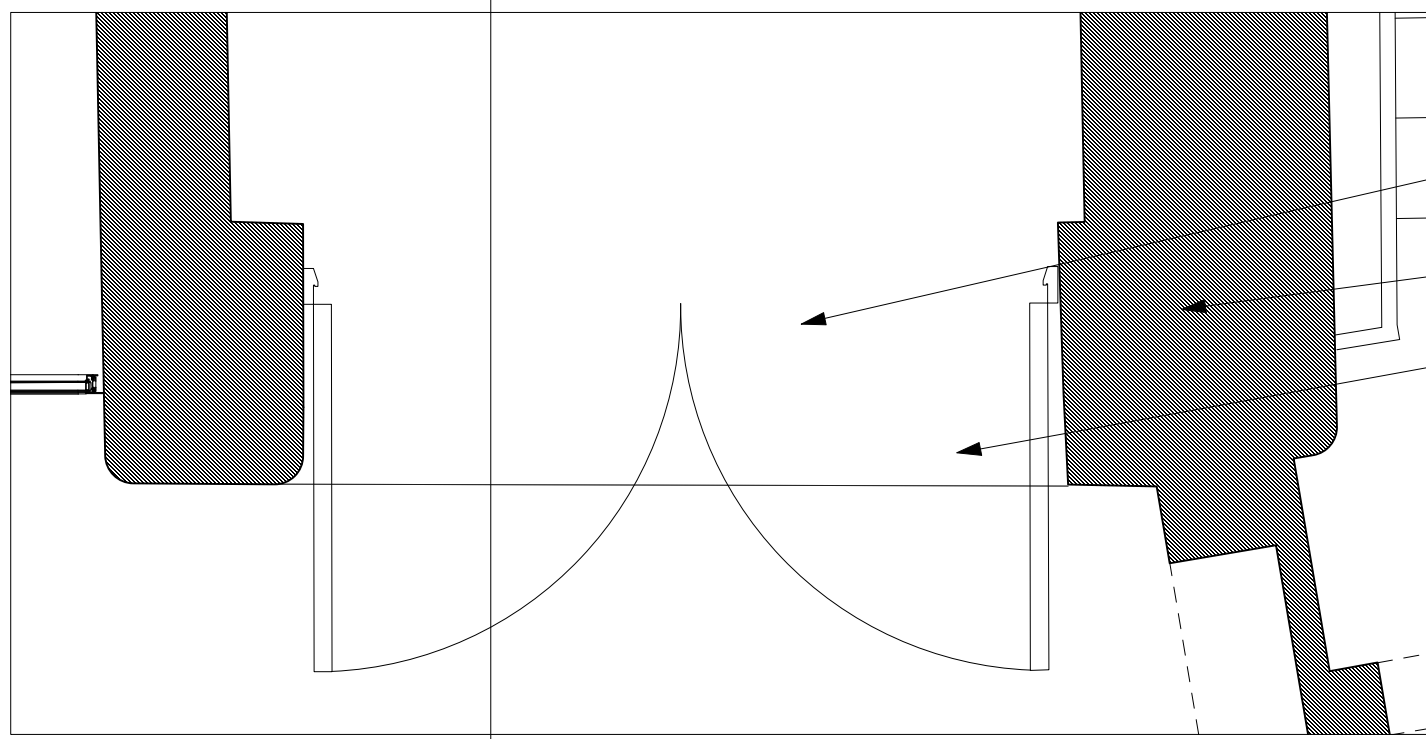
New tubular up-down glass lights fitted to existing brick columns.

Existing metal roller-shutters removed; any damage to Brickwork Piers to be repaired and made good. Processes to be determined once area is uncovered.

New metal doors & windows with bronze finish. With a fenestration style inspired by the Art Deco/Light Industrial stylings of the Alfred Mews Facade & the internal staircase of the Heal's Store.

NB This shows a typical entrance design. As the arrangement of openings differs along the Loading Bays, determined by internal use. See Elevation 1215-GE-XX for details.

Access control panel. Detail to be developed



03 Ground Floor Plan
Scale: 1:20

New metal doors & windows with bronze finish. Fitted inline with end of rear curved chamfer of brick pier. With a fenestration style inspired by the Art Deco/Light Industrial stylings of the Alfred Mews Facade & the internal staircase of the Heal's Store.

Brickwork Piers to be repaired, made good & all paint to be removed. Processes to be determined once area is uncovered.

New threshold strip to be fitted between piers once existing concrete screed is removed. Detail to be developed following completion of local opening up works

© Buckley Gray Yeoman Ltd.

All dimensions to be checked on site prior to commencement of any works, and/or preparation of any shop drawings. Sizes of and dimensions to any structural elements are indicative only. See structural engineers drawings for actual sizes/dimensions. Sizes of and dimensions to any service elements are indicative only. See service engineers drawings for actual sizes and dimensions.
This drawing to be read in conjunction with all other Architect's drawings, specifications and other Consultants' information. All proprietary systems shown on this drawing are to be installed strictly in accordance with the Manufacturers/Suppliers recommended details.
Any discrepancies between information shown on this drawing and any other contract information or manufacturers/suppliers recommendations is to be brought to the attention of the Architect.

DO NOT SCALE FROM THIS DRAWING.

DRAWING NOTES:

P1 06/05/22 Issued for Planning
REV. DATE NOTE

DRAWN

CLIENT
General Projects

PROJECT
Heal's Building

DWG No.
1215_PL3i-ED-01

DRAWING
**Alfred Mews Facade:
Basement Access Stair Fenestration**

STATUS
PLANNING

SCALE
**1:20 @ A1
1:40 @ A3**

APPROVED
NJ

DATE
May 2022

BGY

BUCKLEY GRAY YEOMAN
+ 44 20 7033 9913
BGY.CO.UK