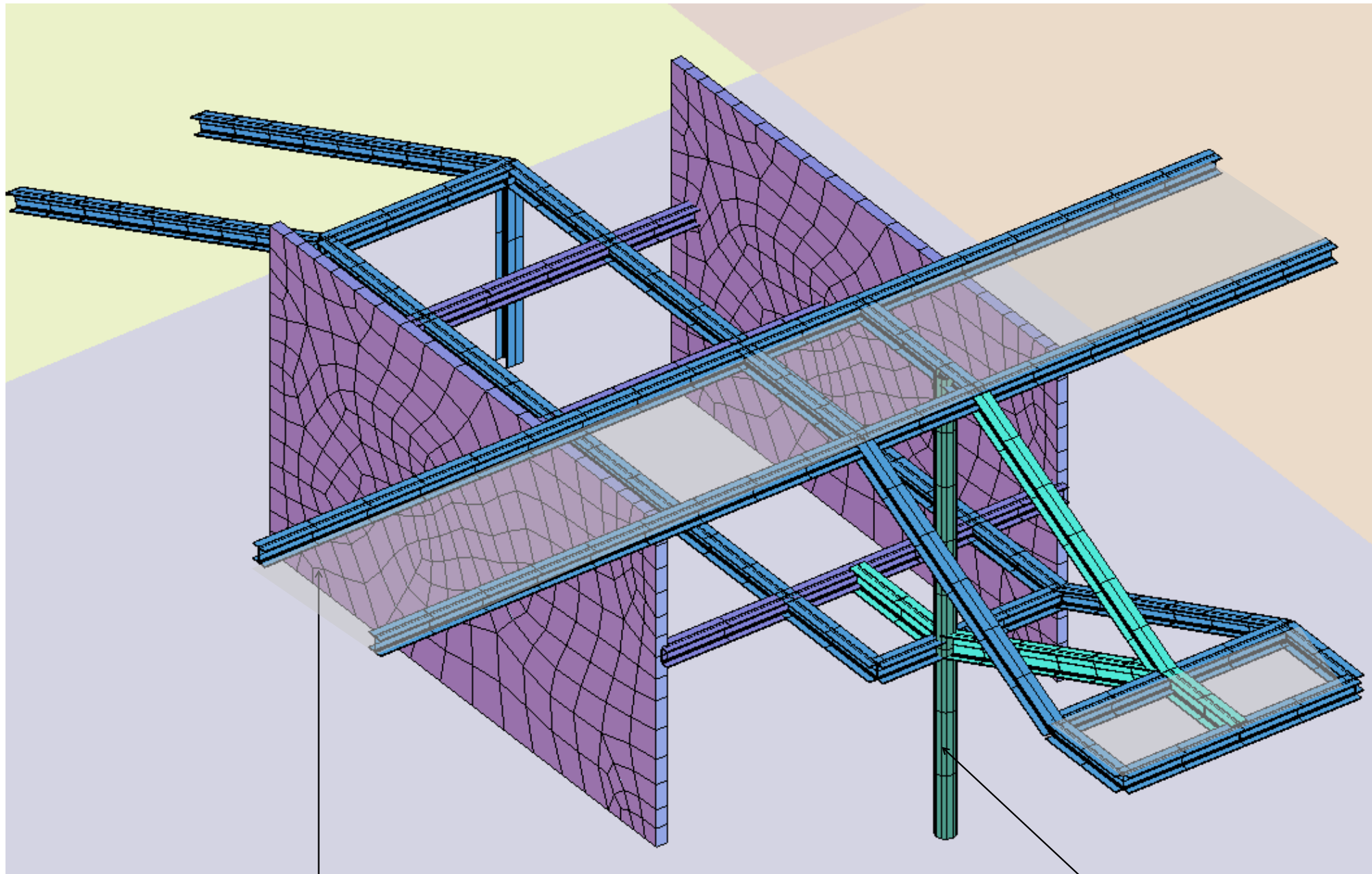
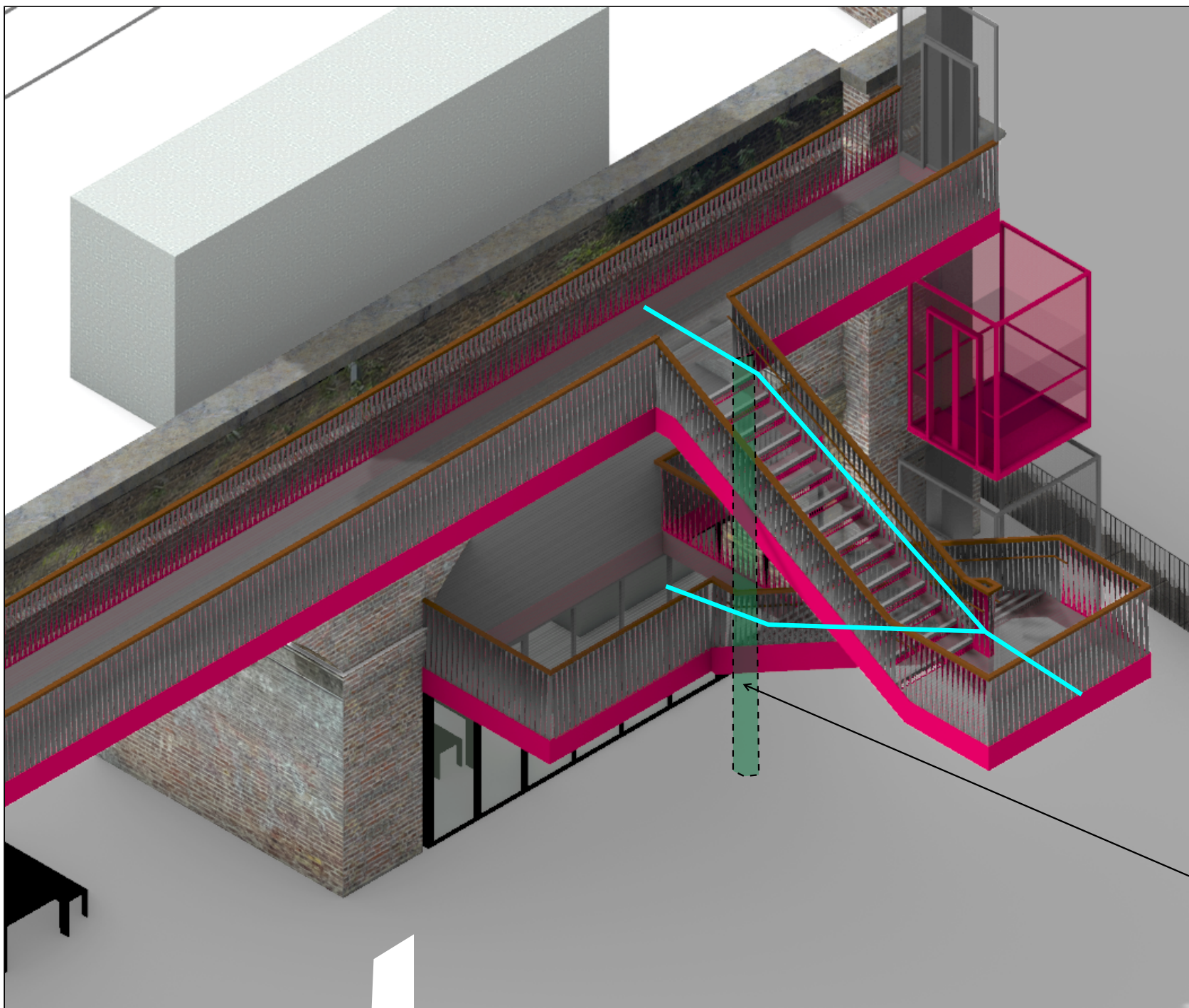


STEEL STAIR  
OPTION 2: WITH SUPPORTING COLUMN

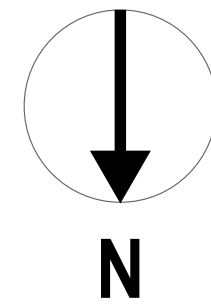


TOP FLOOR CATWALK

CENTRAL COLUMN LOCATED BELOW  
CANTILEVERING PLATFORM -  
POTENTIAL TO BE REMOVED



CENTRAL COLUMN LOCATED BELOW  
CANTILEVERING PLATFORM -  
POTENTIAL TO BE REMOVED

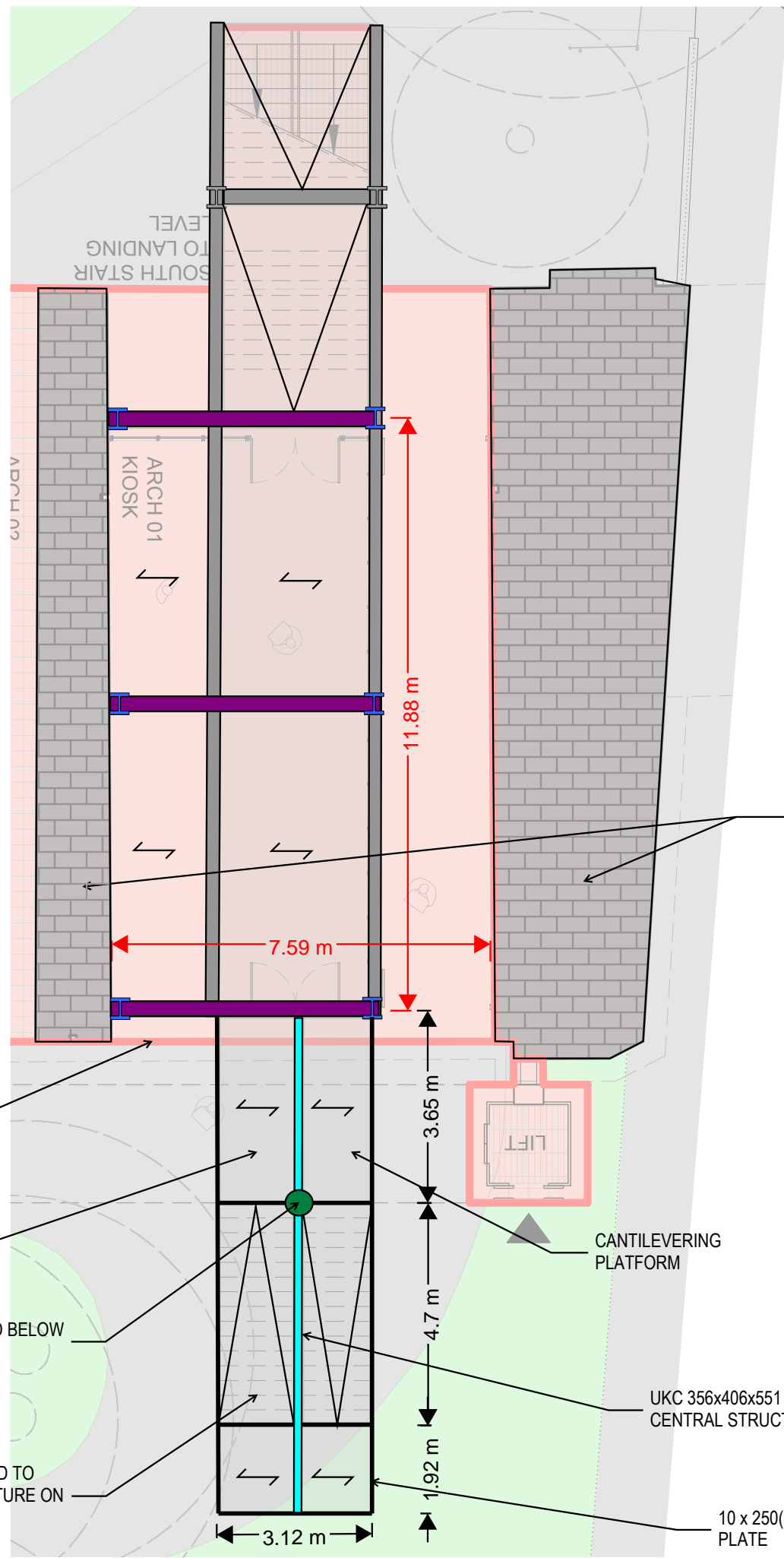


STEEL BEAM SUPPORTED  
ON EXISTING PIER ON  
ONE SIDE AND A COLUMN  
ON THE OTHER

TOP LANDING AT  
GANTRY LEVEL

CENTRAL COLUMN LOCATED BELOW  
CANTILEVERING PLATFORM

RAMP CONNECTED TO  
CATWALK STRUCTURE ON  
TOP FLOOR

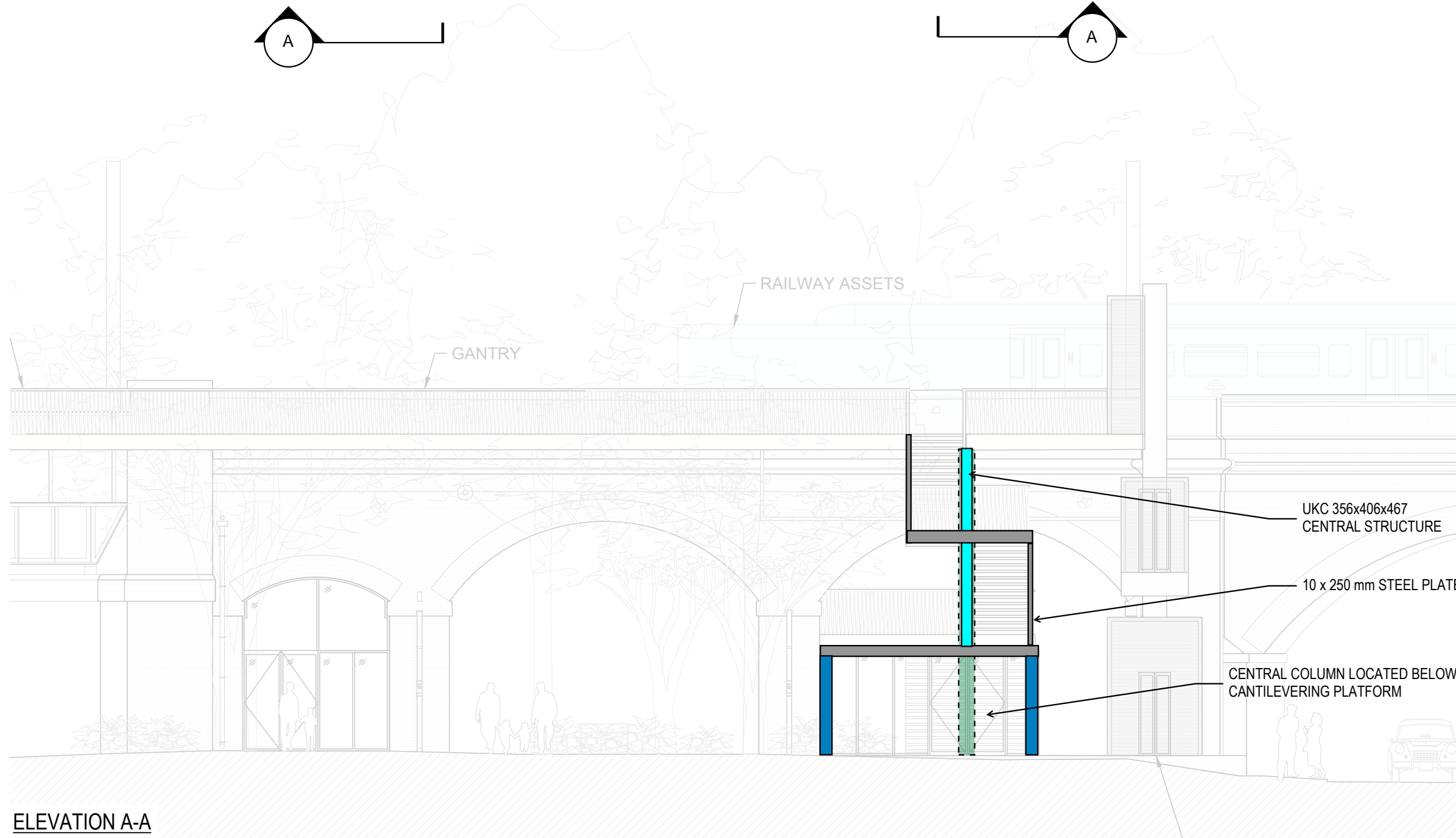
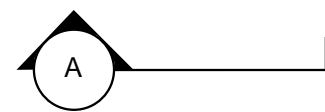


EXISTING BLOCKWORK  
PIERS

CANTILEVERING  
PLATFORM

UKC 356x406x551 (h=460mm)  
CENTRAL STRUCTURE

10 x 250(h) mm STEEL  
PLATE



ELEVATION A-A

ARCH 03b  
BIN STORE

ARCH 02  
COMMUNAL TABLE

ARCH 01  
KIOSK

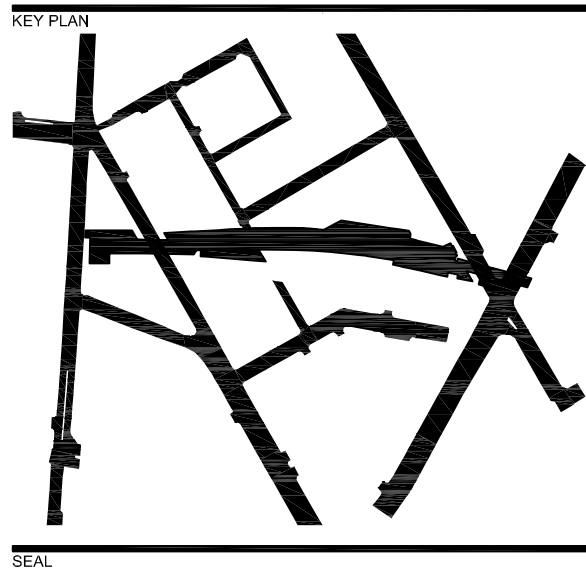
LIFT WITH SCREEN  
GUARDING



PROJECT				TITLE			
CAMDEN HIGH LINE				STAIR OPTIONS			
DATE	25/04/2022	SCALE	1:100 @ A3	DESIGNER		STATUS	FOR DISCUSSION
DRAWN	JL	CHECKED	GL	PROJECT NO.	4966	DRAWING NO.	4966-HS-SK03 (SHEET 02/02)
						REV.	P4

ORIGINAL SHEET SIZE: 594 X 841 MM

REVISION/ISSUANCE		
NO.	DESCRIPTION	DATE
1	50% CONCEPT DESIGN	18.10.2021
2	100% CONCEPT DESIGN	20.12.2021
3	PLANNING SUBMISSION	MAY 2022



CONCEPT DESIGN

NOT FOR  
CONSTRUCTION

CLIENT TEAM:  
**Camden Highline & Camden Town Unlimited**  
Top Container, 5-7 Buck Street, London NW1 8NJ

LANDSCAPE ARCHITECT:  
**JAMES CORNER FIELD OPERATIONS**  
475 Tenth Ave, 5th Floor, New York, NY 10018

**vPPR Architects - Architecture**  
22 Prince of Wales Rd, London NW5 3LG

**Tony Gee - Train/Network Rail Engineering**  
Hardy House, 140 High Street, Surrey KT10 9QJ

**AKT II Engineering - Civil & Structural**  
White Collar Factory, 1 Old Street Yard  
London EC1Y 8AF

**Spiers Major - Lighting Design**  
8 Shepherdess Walk, London N1 7LB

**RLB - Cost Estimator**  
Level 3, 110 Bishopsgate, London, EC2N 4AY

**Street Space - Community Outreach**  
50 Cambridge Road, Barking IG11 8FG

**Pentagram - Signage**  
11 Needham Road, London W11 2RP

**Piet Oudolf - Horticulture**  
Broekstraat 17, 6999 DE, Hummelo, NL

**Hew Locke - Art**  
Hales Gallery, The Tea Building,  
7 Bethnal Green Road, London, E1 6L8

**Atelier Ten - Sustainability**  
19 Perseverance Works, 38 Kingsland Road,  
London E2 8DD

**Authentic Futures - Heritage**  
Ground Floor, 72-74 Mare Street, London E8 4RT

PROJECT NAME:

JCFO PROJ. #:

PROJECT PHASE:

CONCEPT DESIGN

DESIGNED BY: AKTII

DRAWN BY:

CHECKED BY:

SCALE: NORTH  
A3 SHEET

A1 SHEET

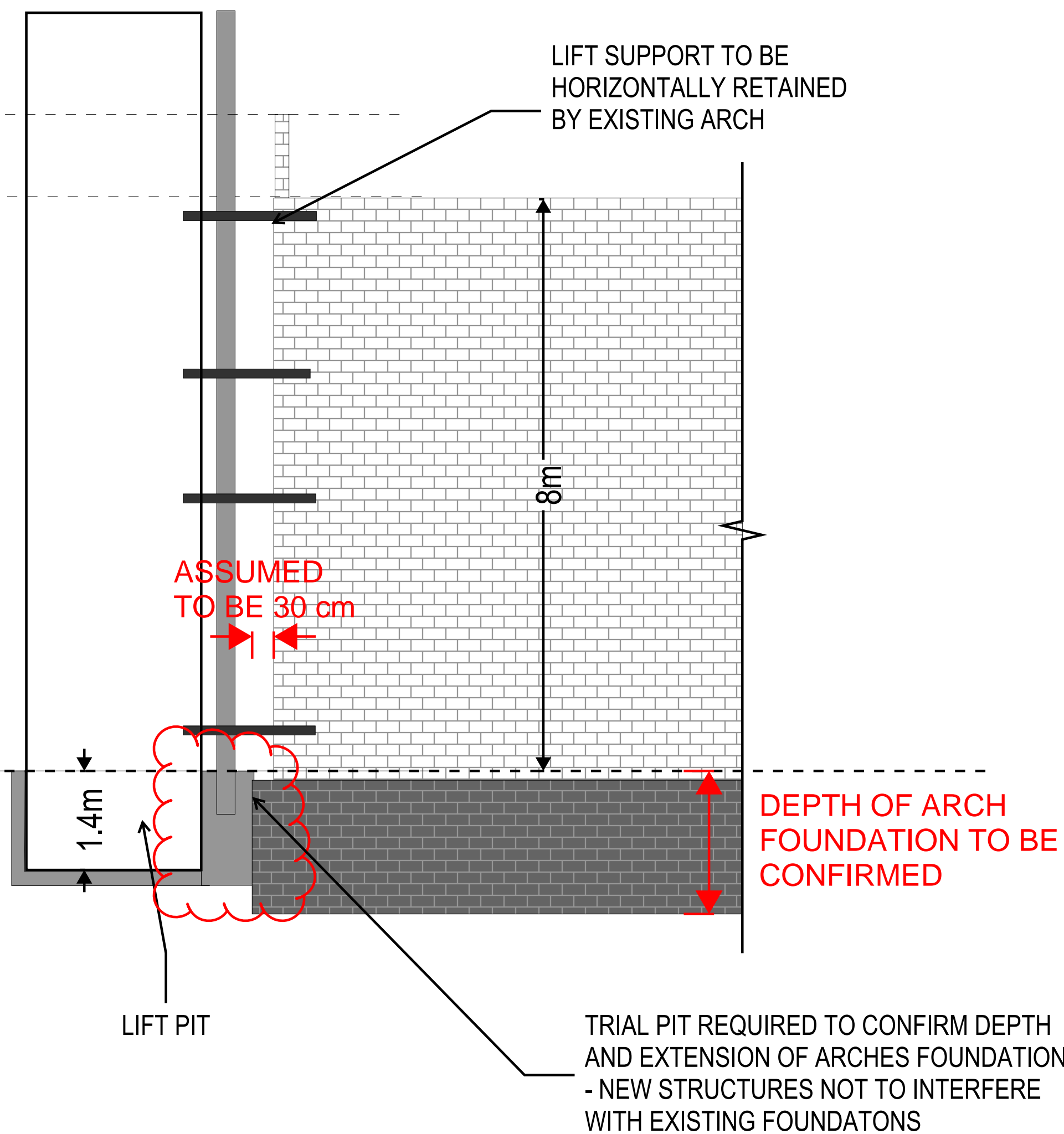
SHEET TITLE  
**AKT II SKETCH  
STAIR OPTION**

SHEET NUMBER  
**S-P1-003  
(Sheet 2/2)**

All Rights Reserved  
These drawings, concepts, designs and ideas are the property of James Corner Field Operations. They may not be copied, reproduced, distributed or used in connection with any work other than the specified project for which they were prepared. In whole or in part, without the prior written authorisation of James Corner Field Operations.

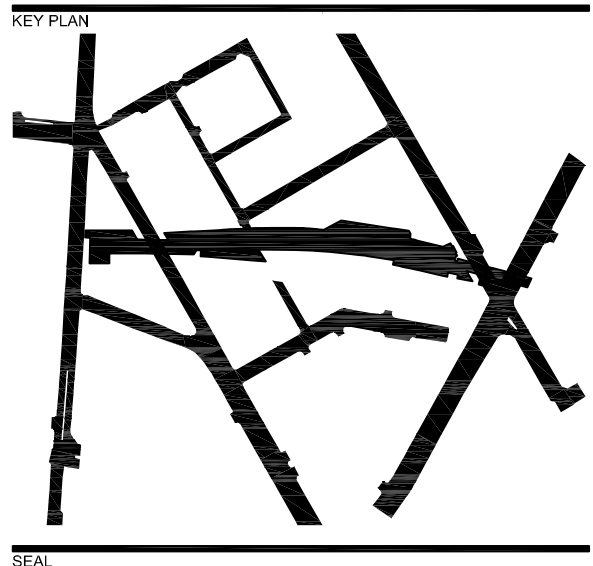


COMMENTS ON "RACK & PINION" LIFT



PROJECT CAMDEN HIGH LINE				TITLE RACK LIFT			
DATE	3/12/2021	SCALE	1:100 @ A3	CAD FILENAME	-	STATUS	FOR DISCUSSION
DRAWN	GC	CHECKED	MO	PROJECT No.	4966	DRAWING No.	4966-S-HSK-04 (SHEET 01/01)
				REV	P02		

REVISION/ISSUANCE		
NO.	DESCRIPTION	DATE
1	50% CONCEPT DESIGN	18.10.2021
2	100% CONCEPT DESIGN	20.12.2021
3	PLANNING SUBMISSION	MAY 2022



CONCEPT DESIGN  
NOT FOR  
CONSTRUCTION

CLIENT TEAM:  
**Camden Highline & Camden Town Unlimited**  
Top Container, 5-7 Buck Street, London NW1 8NJ

LANDSCAPE ARCHITECT:  
**JAMES CORNER FIELD OPERATIONS**  
475 Tenth Ave, 5th Floor, New York, NY 10018

**vPPR Architects - Architecture**  
22 Prince of Wales Rd, London NW5 3LG

**Tony Gee - Train/Network Rail Engineering**  
Hardy House, 140 High Street, Surrey KT10 9QJ

**AKT II Engineering - Civil & Structural**  
White Collar Factory, 1 Old Street Yard  
London EC1Y 8AF

**Spliers Major - Lighting Design**  
8 Shepherdess Walk, London N1 7LB

**RLB - Cost Estimator**  
Level 3, 110 Bishopsgate, London, EC2N 4AY

**Street Space - Community Outreach**  
50 Cambridge Road, Barking IG11 8FG

**Pentagram - Signage**  
11 Needham Road, London W11 2RP

**Piet Oudolf - Horticulture**  
Broekstraat 17, 6999 DE, Hummelo, NL

**Hew Locke - Art**  
Hales Gallery, The Tea Building,  
7 Bethnal Green Road, London, E1 6L8

**Atelier Ten - Sustainability**  
19 Perseverance Works, 38 Kingsland Road,  
London E2 8DD

**Authentic Futures - Heritage**  
Ground Floor, 72-74 Mare Street, London E8 4RT

PROJECT NAME:

JCFO PROJ #:

PROJECT PHASE:  
CONCEPT DESIGN

DESIGNED BY: AKTII  
DRAWN BY:  
CHECKED BY:

SCALE: NORTH  
A3 SHEET

A1 SHEET

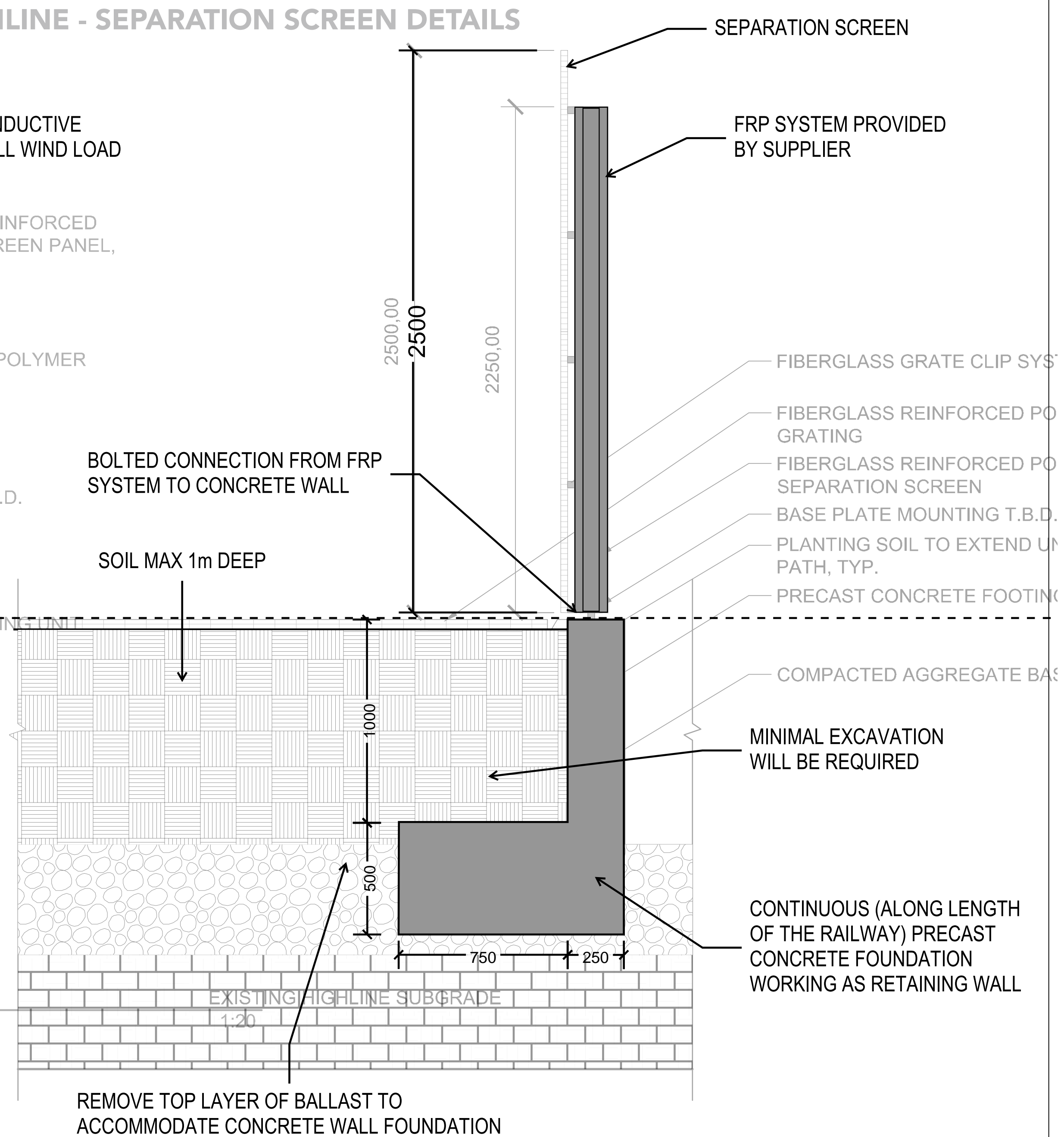
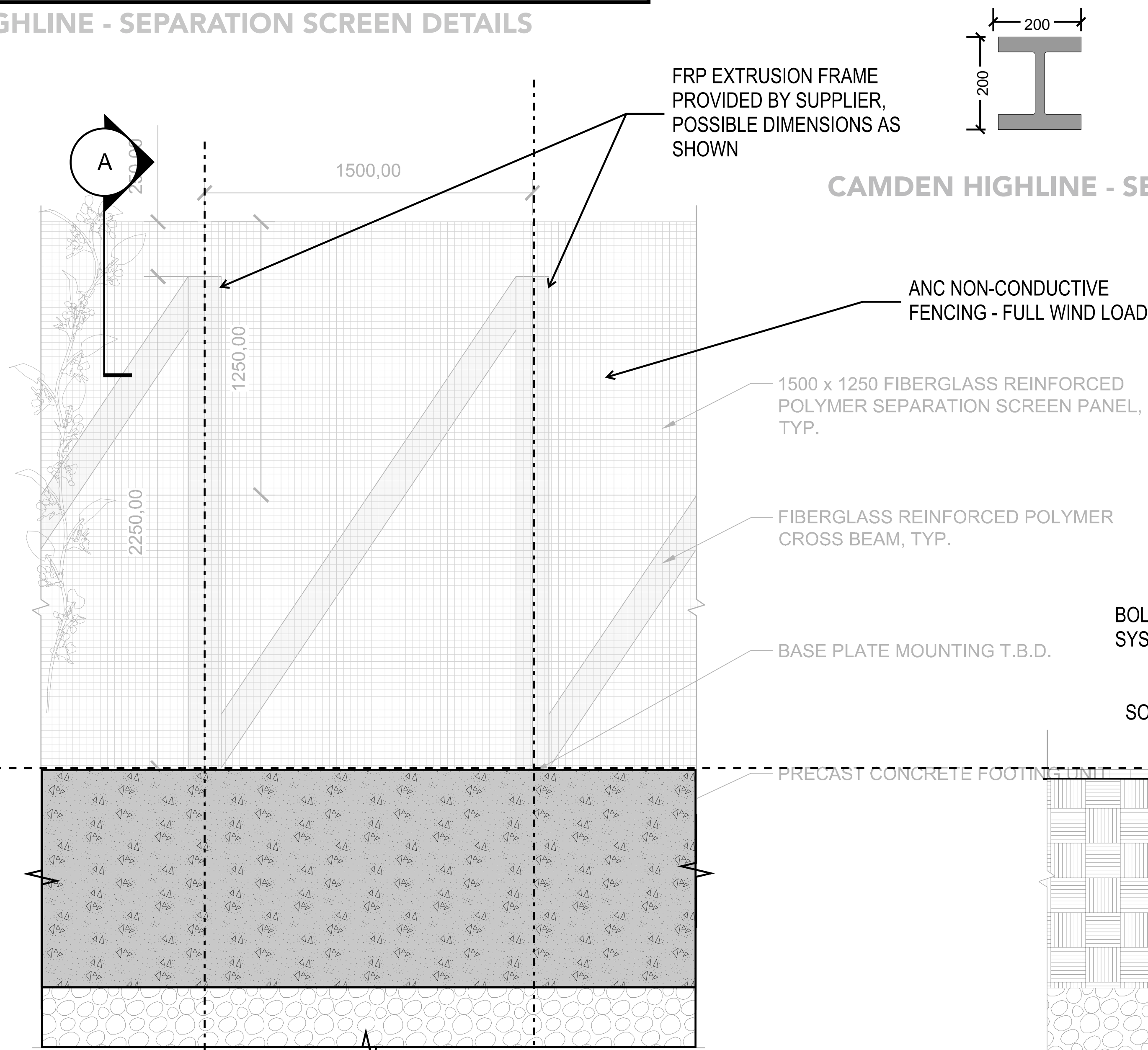
SHEET TITLE:  
AKT II SKETCH  
COMMENTS ON RACK LIFT

SHEET NUMBER:  
S-P1-004

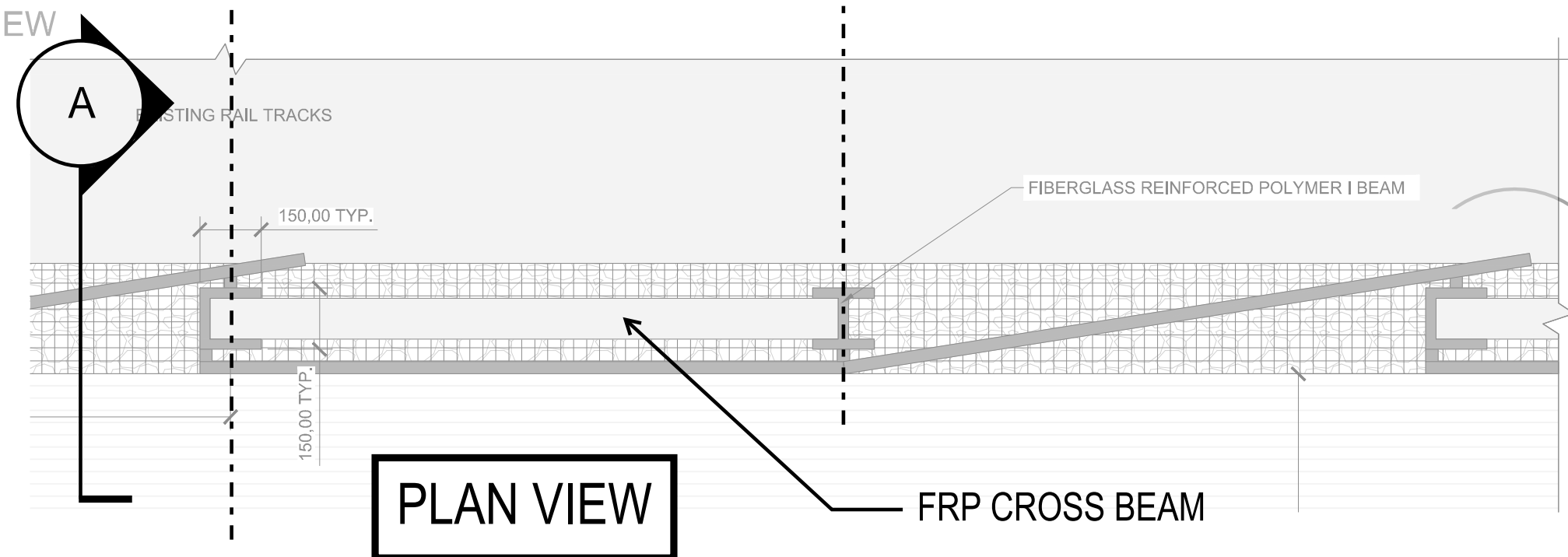


SEPARATION SCREEN DETAILS  
OPTION 1: CONTINUOUS RETAINING WALL

CAMDEN HIGHLINE - SEPARATION SCREEN DETAILS

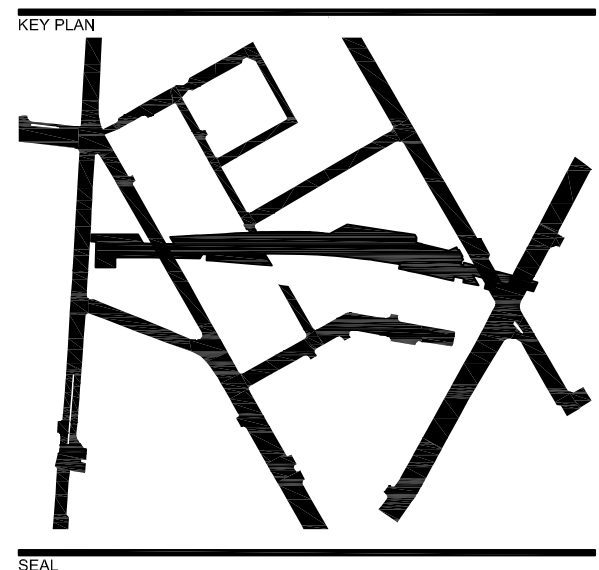


02 SEPARATION SCREEN WITH PRECAST CONCRETE FOOTING  
ELEVATION VIEW



PROJECT CAMDEN HIGH LINE				TITLE SEPARATION SCREEN DETAILS			
DATE	3/12/2021	SCALE	1:100 @ A3	CAD FILENAME	-	STATUS	FOR DISCUSSION
DRAWN	GC	CHECKED	MO	PROJECT No.	4966	DRAWING No.	4966-S-HSK-05 (SHEET 01/02)
				REV	P03		

REVISION/ISSUANCE		
NO.	DESCRIPTION	DATE
1	50% CONCEPT DESIGN	18.10.2021
2	100% CONCEPT DESIGN	20.12.2021
3	PLANNING SUBMISSION	MAY 2022



CONCEPT DESIGN  
NOT FOR CONSTRUCTION

CLIENT TEAM:  
**Camden Highline & Camden Town Unlimited**  
Top Container, 5-7 Buck Street, London NW1 8NJ

LANDSCAPE ARCHITECT:  
**JAMES CORNER FIELD OPERATIONS**  
475 Tenth Ave, 5th Floor, New York, NY 10018

vPPR Architects - Architecture  
22 Prince of Wales Rd, London NW5 3LG

Tony Gee - Train/Network Rail Engineering  
Hardy House, 140 High Street, Surrey KT10 9QJ

AKT II Engineering - Civil & Structural  
White Collar Factory, 1 Old Street Yard  
London EC1Y 8AF

Spilers Major - Lighting Design  
8 Shepherdess Walk, London N1 7LB

RLB - Cost Estimator  
Level 3, 110 Bishopsgate, London, EC2N 4AY

Street Space - Community Outreach  
50 Cambridge Road, Barking IG11 8FG

Pentagram - Signage  
11 Needham Road, London W11 2RP

Piet Oudolf - Horticulture  
Broekstraat 17, 6999 DE, Hummelo, NL

Hew Locke - Art  
Hales Gallery, The Tea Building,  
7 Bethnal Green Road, London, E1 6L8

Atelier Ten - Sustainability  
19 Perseverance Works, 38 Kingsland Road,  
London E2 8DD

Authentic Futures - Heritage  
Ground Floor, 72-74 Mare Street, London E8 4RT

PROJECT NAME:

JCFO PROJ. #:

PROJECT PHASE:

CONCEPT DESIGN

DESIGNED BY: AKTII

DRAWN BY:

CHECKED BY:

SCALE: NORTH

A3 SHEET

A1 SHEET

SHEET TITLE

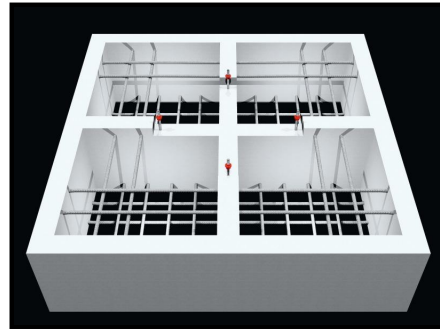
AKT II SKETCH  
SEPARATION SCREEN DETAILS

SHEET NUMBER

S-P1-005  
(Sheet 1/2)

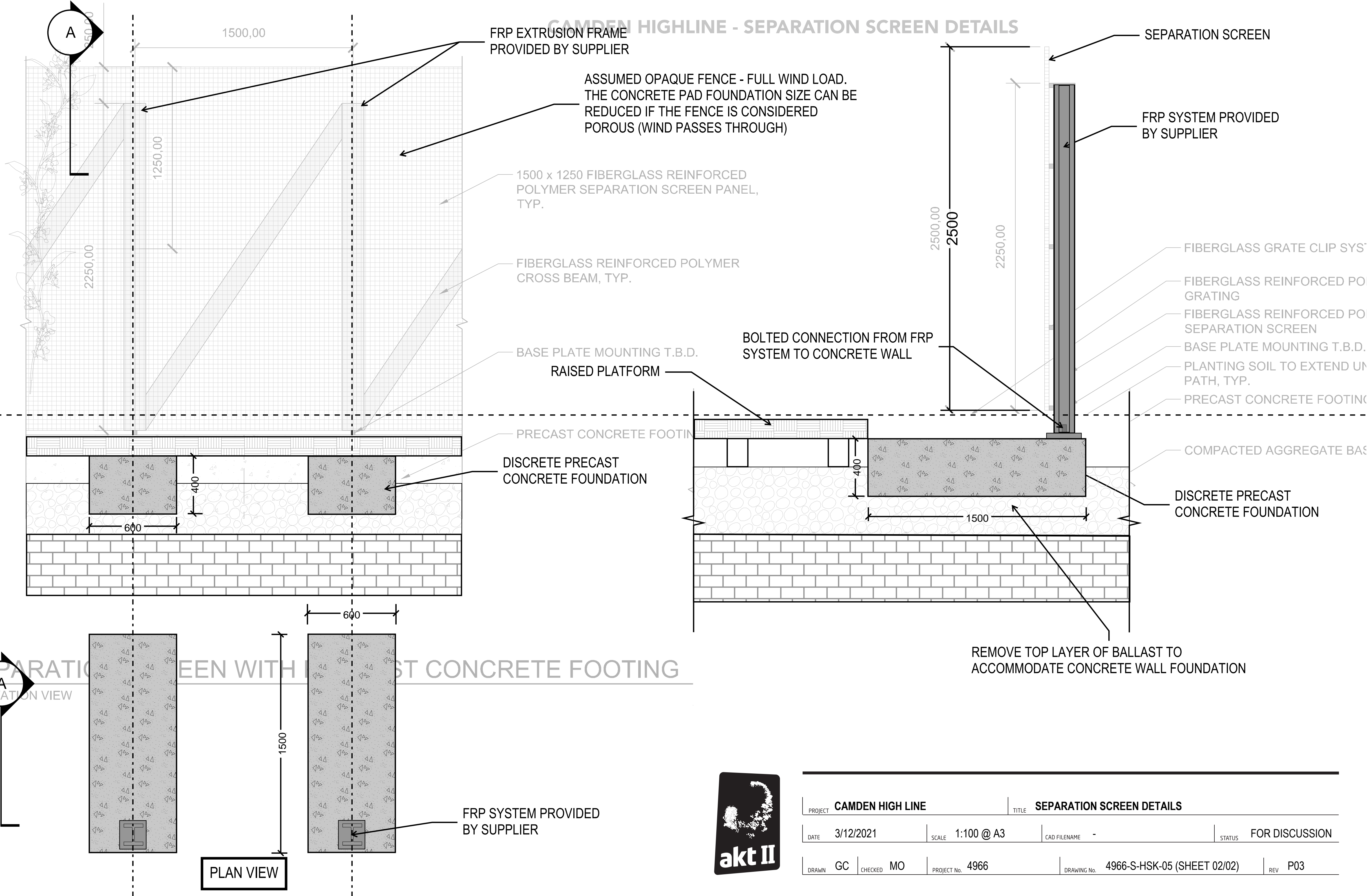


SEPARATION SCREEN DETAILS  
OPTION 2: DISCRETE PRECAST PADS  
EXAMPLE IMAGE

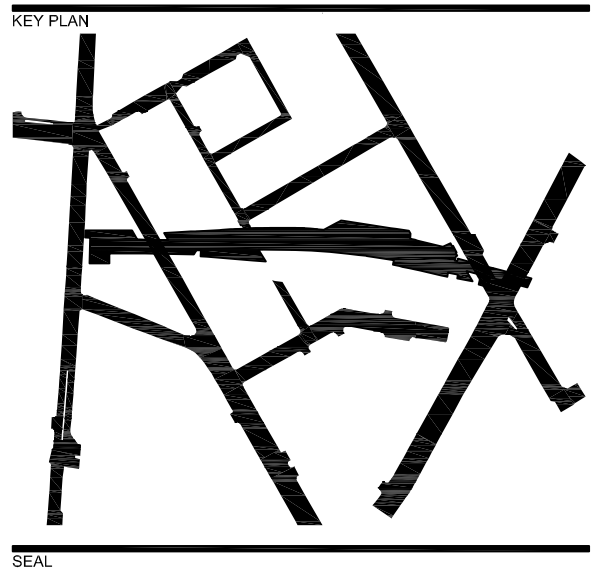


POTENTIAL TO AVOID COSTS OF THE CONCRETE  
CONTINUOUS RETAINING WALL

CAMDEN HIGHLINE - SEPARATION SCREEN DETAILS



REVISION/ISSUANCE		
NO.	DESCRIPTION	DATE
1	50% CONCEPT DESIGN	18.10.2021
2	100% CONCEPT DESIGN	20.12.2021
3	PLANNING SUBMISSION	MAY 2022



CONCEPT DESIGN  
NOT FOR  
CONSTRUCTION

CLIENT TEAM:  
**Camden Highline & Camden Town Unlimited**  
Top Container, 5-7 Buck Street, London NW1 8NJ

LANDSCAPE ARCHITECT:  
**JAMES CORNER FIELD OPERATIONS**  
475 Tenth Ave, 5th Floor, New York, NY 10018

vPPR Architects - Architecture  
22 Prince of Wales Rd, London NW5 3LG

Tony Gee - Train/Network Rail Engineering  
Hardy House, 140 High Street, Surrey KT10 9QJ

AKT II Engineering - Civil & Structural  
White Collar Factory, 1 Old Street Yard  
London EC1Y 8AF

Spilers Major - Lighting Design  
8 Shepherdess Walk, London N1 7LB

RLB - Cost Estimator  
Level 3, 110 Bishopsgate, London, EC2N 4AY

Street Space - Community Outreach  
50 Cambridge Road, Barking IG11 8FG

Pentagram - Signage  
11 Needham Road, London W11 2RP

Piet Oudolf - Horticulture  
Broekstraat 17, 6999 DE, Hummelo, NL

Hew Locke - Art  
Hales Gallery, The Tea Building,  
7 Bethnal Green Road, London, E1 6L8

Atelier Ten - Sustainability  
19 Perseverance Works, 38 Kingsland Road,  
London E2 8DD

Authentic Futures - Heritage  
Ground Floor, 72-74 Mare Street, London E8 4RT

PROJECT NAME:

JCFO PROJ #:

PROJECT PHASE:

CONCEPT DESIGN

DESIGNED BY: AKTII

DRAWN BY: CHECKED BY:

SCALE: NORTH

A3 SHEET

A1 SHEET

SHEET TITLE:

AKT II SKETCH  
SEPARATION SCREEN DETAILS

SHEET NUMBER:

S-P1-005  
(Sheet 2/2)



PROJECT		TITLE	
CAMDEN HIGH LINE		SEPARATION SCREEN DETAILS	
DATE	3/12/2021	SCALE	1:100 @ A3
CAD FILENAME	-	STATUS	FOR DISCUSSION
DRAWN	GC	CHECKED	MO
PROJECT No.	4966	DRAWING No.	4966-S-HSK-05 (SHEET 02/02)
REV	P03		



NEW RETAINING WALL

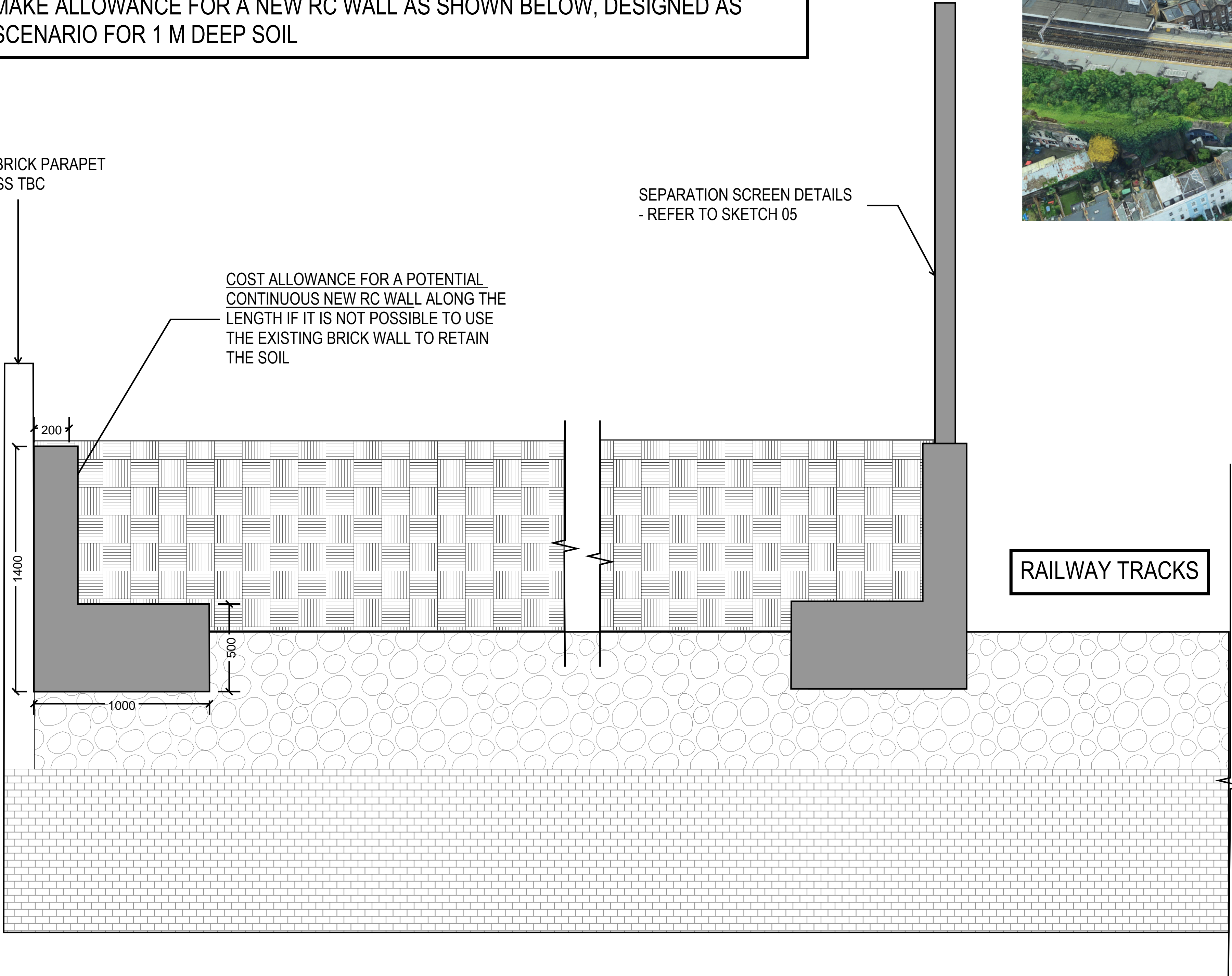
NEW RETAINING WALL ALONG RAILWAY, ADJACENT TO EXISTING PARAPET – THE CAPACITY OF EXISTING BRICK WALL SHOULD BE CHECKED AGAINST THE PRESSURE DUE TO THE NEW SOIL. PLEASE MAKE ALLOWANCE FOR A NEW RC WALL AS SHOWN BELOW, DESIGNED AS WORST CASE SCENARIO FOR 1 M DEEP SOIL

EXISTING BRICK PARAPET  
- THICKNESS TBC

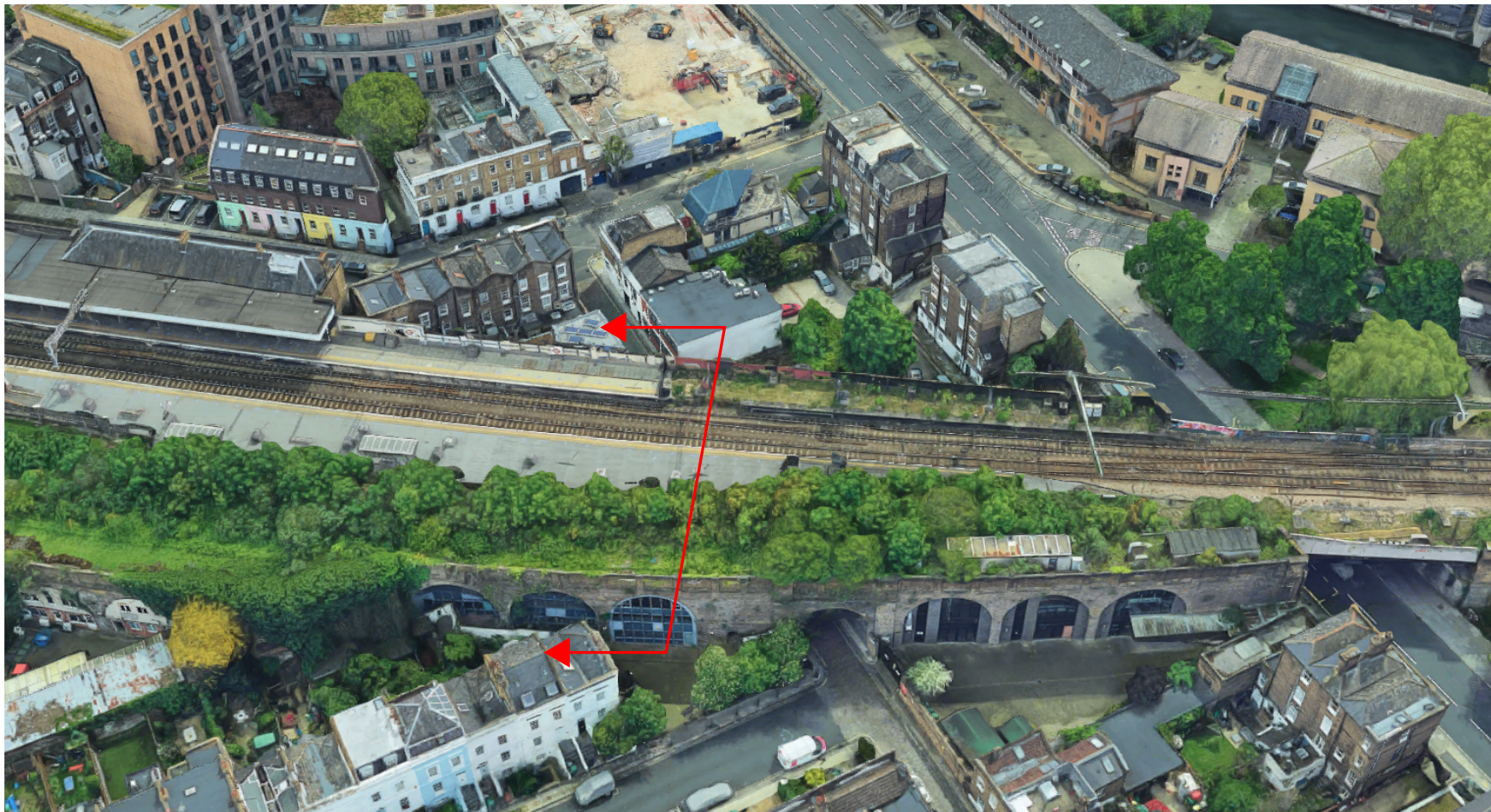
SEPARATION SCREEN DETAILS  
- REFER TO SKETCH 05

COST ALLOWANCE FOR A POTENTIAL  
CONTINUOUS NEW RC WALL ALONG THE  
LENGTH IF IT IS NOT POSSIBLE TO USE  
THE EXISTING BRICK WALL TO RETAIN  
THE SOIL

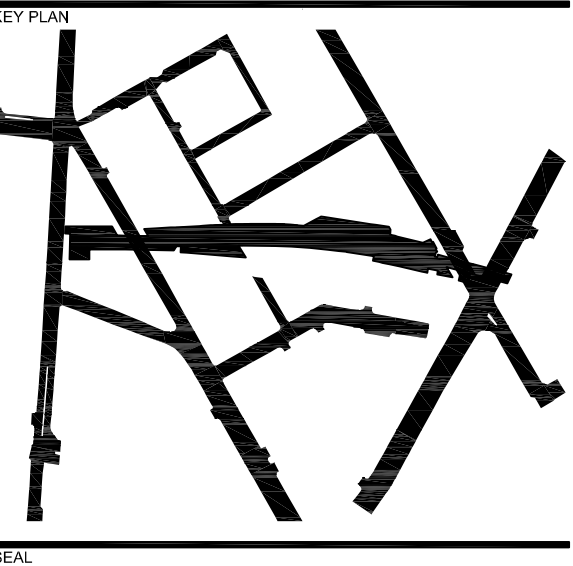
MAX HEIGHT OF SOIL = 1 m



TYPICAL TRANSVERSE SECTION ALONG RAILWAY



REVISION/ISSUANCE		
NO.	DESCRIPTION	DATE
1	50% CONCEPT DESIGN	18.10.2021
2	100% CONCEPT DESIGN	20.12.2021
3	PLANNING SUBMISSION	MAY 2022



CONCEPT DESIGN

NOT FOR  
CONSTRUCTION

CLIENT TEAM:  
**Camden Highline & Camden Town Unlimited**  
Top Container, 5-7 Buck Street, London NW1 8NJ

LANDSCAPE ARCHITECT:  
**JAMES CORNER FIELD OPERATIONS**  
47/2 Tenth Ave, 5th Floor, New York, NY 10018

**vPPR Architects - Architecture**  
22 Prince of Wales Rd, London NW5 3LG

**Tony Gee - Train/Network Rail Engineering**  
Hardy House, 140 High Street, Surrey KT10 9QJ

**AKT II Engineering - Civil & Structural**  
White Collar Factory, 1 Old Street Yard  
London EC1Y 8AF

**Spiers Major - Lighting Design**  
8 Shepherdess Walk, London N1 7LB

**RLB - Cost Estimator**  
Level 3, 110 Bishopsgate, London, EC2N 4AY

**Street Space - Community Outreach**  
50 Cambridge Road, Barking IG11 8FG

**Pentagram - Signage**  
11 Needham Road, London W11 2RP

**Piet Oudolf - Horticulture**  
Broekstraat 17, 6999 DE, Hummelo, NL

**Hew Locke - Art**  
Hales Gallery, The Tea Building,  
7 Bethnal Green Road, London, E1 6L8

**Atelier Ten - Sustainability**  
19 Perseverance Works, 38 Kingsland Road,  
London E2 8DD

**Authentic Futures - Heritage**  
Ground Floor, 72-74 Mare Street, London E8 4RT

PROJECT NAME:

JCFO PROJ. #:

PROJECT PHASE:  
CONCEPT DESIGN

DESIGNED BY: AKTII  
DRAWN BY:  
CHECKED BY:

SCALE: NORTH  
A3 SHEET

A1 SHEET

SHEET TITLE:  
AKT II SKETCH  
NEW RC WALL

SHEET NUMBER:  
S-P1-006



PROJECT	CAMDEN HIGH LINE	TITLE	NEW RETAINING WALL
DATE	15/10/2021	SCALE	1:100 @ A3
CAD FILENAME	-	STATUS	FOR DISCUSSION
DRAWN	GC	CHECKED	MO
PROJECT No.	4966	DRAWING No.	4966-S-HSK-06 (SHEET 01/01)
REV	P02		