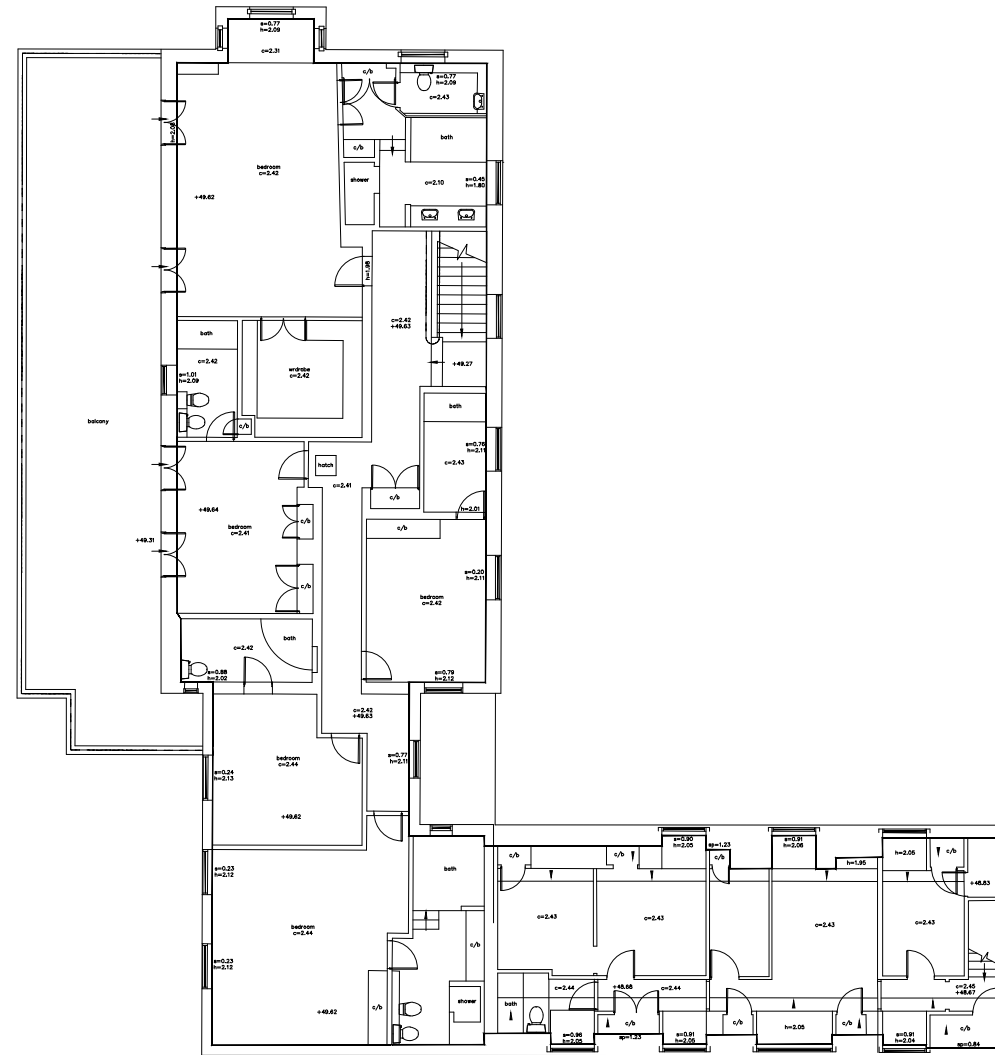
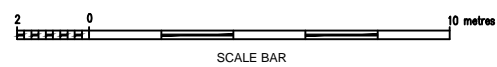


Ground Floor
Gross Internal Area=384.2sqm



First Floor
Gross Internal Area=293.82sqm



Revision	Description	Date
----------	-------------	------

LEGEND

To view individual floors all layers beginning with " C " must be turned on and thawed, along with all of the layers beginning with the relevant floor prefix.

- FLOOR PREFIXES**
- B = Basement
 - G = Ground
 - 1 = First Floor
 - 2 = Second Floor
 - 3 = Third Floor
 - 4 = Fourth Floor
- p = Plinth Height RL = Ridge Level
s = Sill Height EL = Eaves Level
h = Head Height RFL = Roof Level
c = Ceiling Height SFL = Soffit Level
b = Beam Height THL = Threshold Level
sp = Spring Point Height
fc = False Ceiling Height
sc = Structural Ceiling Height
+35.20 Detailed spot level
-52.76 Elevation spot levels

- Elevation/Section Line
- Box partition
- Step up
- Slope up
- Stair cut line
- Exposed Beam
- Hidden Beam
- Fit Mark

terrain
Land and Architectural Surveyors

Terrain Surveys Ltd
Bridge Chambers
29c, High Street
Weylyn
Werts
A&S REG

Tel: 01438 841300
Fax: 01438 841301
enquiries@terrainsurveys.co.uk
www.terrainsurveys.co.uk

Client
G2 LIMITED

Project
52-54 AVENUE ROAD
LONDON NW8

Title
FLOOR PLANS

Drawn by JL	Checked by NAA
Scale 1:100	Date May 2012
Drawing Number TS12-157J/1	Revision 0
Sheet 1	of 1
All levels related to previous survey drawing number TS06-102N.	
Value	