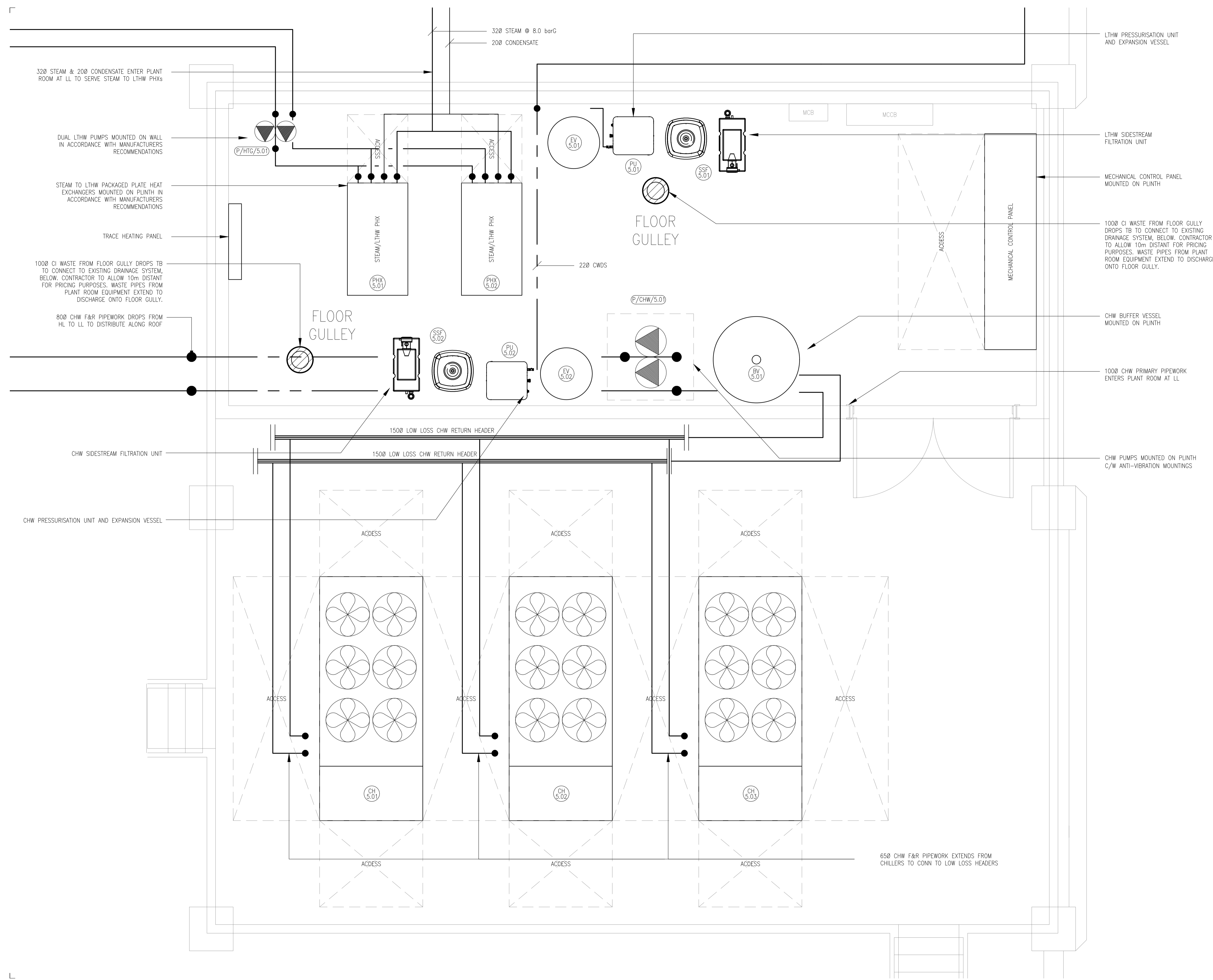


The Richard Stephens Partnership Limited own the copyright to the building services engineering content of this drawing which is not to be used copied published or reproduced in whole or in part in any form without written consent.

notes

1. DO NOT SCALE FROM THIS DRAWING
2. THIS DRAWING TO BE READ IN CONJUNCTION WITH RELEVANT ARCHITECTURAL AND STRUCTURAL DRAWINGS, OTHER SERVICES DRAWINGS AND SPECIFICATIONS
3. ALL EXTERNAL CWS, LTHW, CHW AND PCW PIPEWORK TO BE TRACE HEATED.

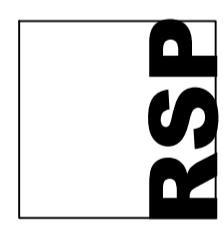


T1	18.03.22	TENDER ISSUE	LR	SVC
rev	date	description	dm	chk

**The Richard Stephens Partnership Limited**  
**Consulting Engineers**

Mill Court  
 Mill Hill  
 Edenbridge  
 Kent TN8 5DB

Tel: 01732 782300  
 Fax: 01732 782340  
 E-mail: mail@therrsp.co.uk  
 Website: www.therrsp.co.uk



client  
**ROYAL FREE LONDON  
 NHS FOUNDATION TRUST**

architect  
**ANSELL & BAILEY**

project  
**ROYAL FREE HOSPITAL,  
 LONDON  
 IMAGING REFURBISHMENT**

title  
**FIFTH FLOOR  
 COMBINED PLANT SERVICES  
 PLANT ROOM LAYOUT**

date	DEC 2021	scale	1:20 @ A1
designed	LR	cad	RSP
checked	SVC	approved	

<b>TENDER DRAWING</b>	
drawing no.	rev
2345-RSP-XX-05-DR-M-10051	T1