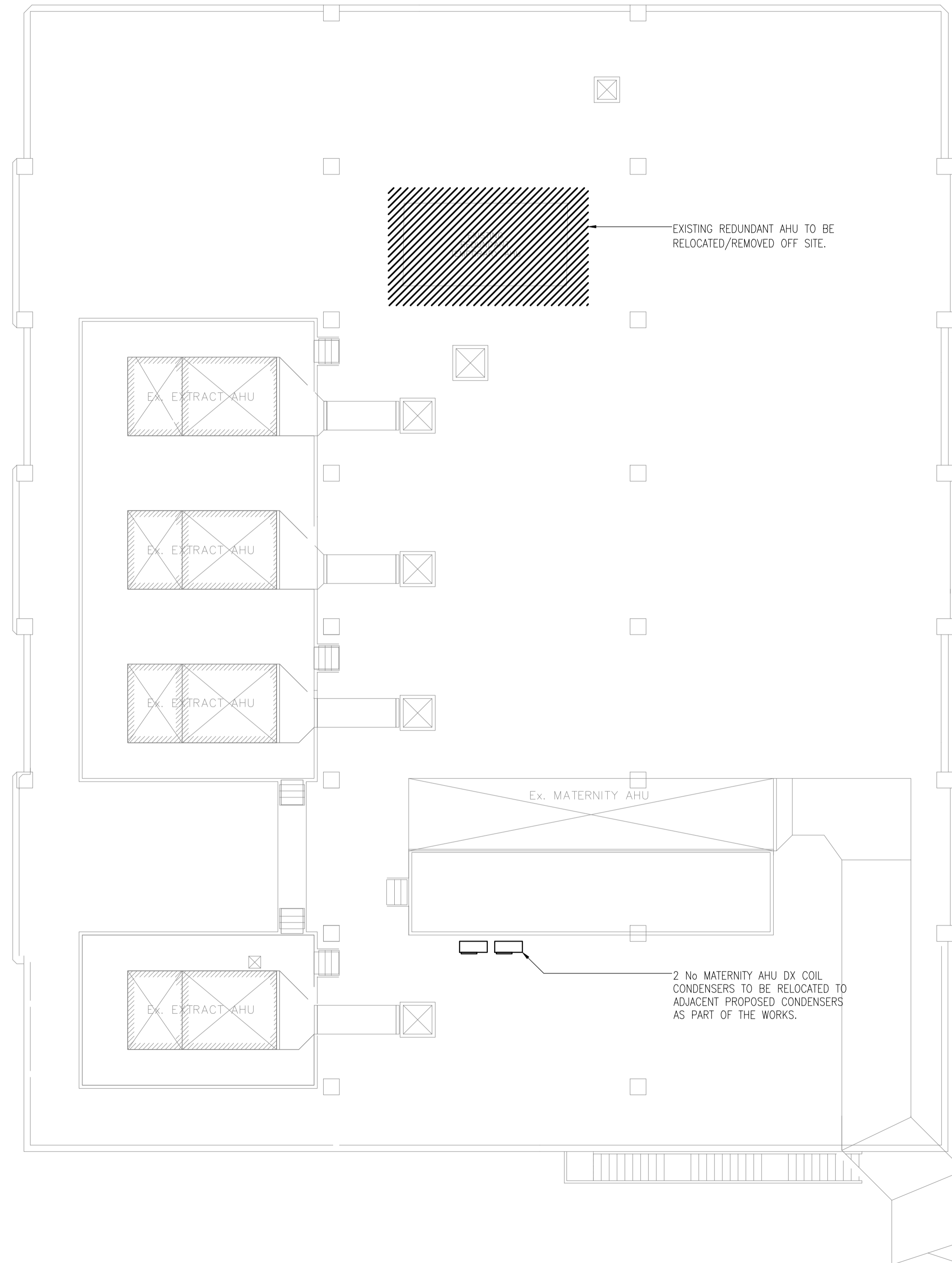
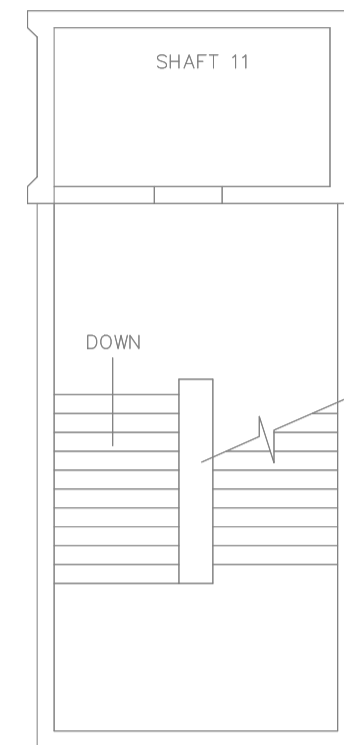


notes

- DO NOT SCALE FROM THIS DRAWING
- THIS DRAWING TO BE READ IN CONJUNCTION WITH RELEVANT ARCHITECTURAL AND STRUCTURAL DRAWINGS, OTHER SERVICES DRAWINGS AND SPECIFICATIONS




P1	18.12.21	PRELIMINARY ISSUE	RSP	SVC
rev	date	description	dm	chk

**The Richard Stephens Partnership Limited**  
**Consulting Engineers**

Mill Court  
 Mill Hill  
 Edenbridge  
 Kent TN8 5DB

Tel: 01732 782300  
 Fax: 01732 782340  
 E-mail: mail@theRSP.co.uk  
 Website: www.theRSP.co.uk



client  
 ROYAL FREE LONDON  
 NHS FOUNDATION TRUST

architect  
 ANSELL & BAILEY

project  
 ROYAL FREE HOSPITAL,  
 LONDON  
 IMAGING REFURBISHMENT

title  
 FIFTH FLOOR  
 MECHANICAL SERVICES TO BE  
 REMOVED/ENABLING WORKS

date	DEC 2021	scale	1:100 @ A1
designed	LR	cad	RSP
checked	SVC	approved	

PRELIMINARY DRAWING	
drawing no.	rev
2345-RSP-XX-R1-DR-M-00R11	P1