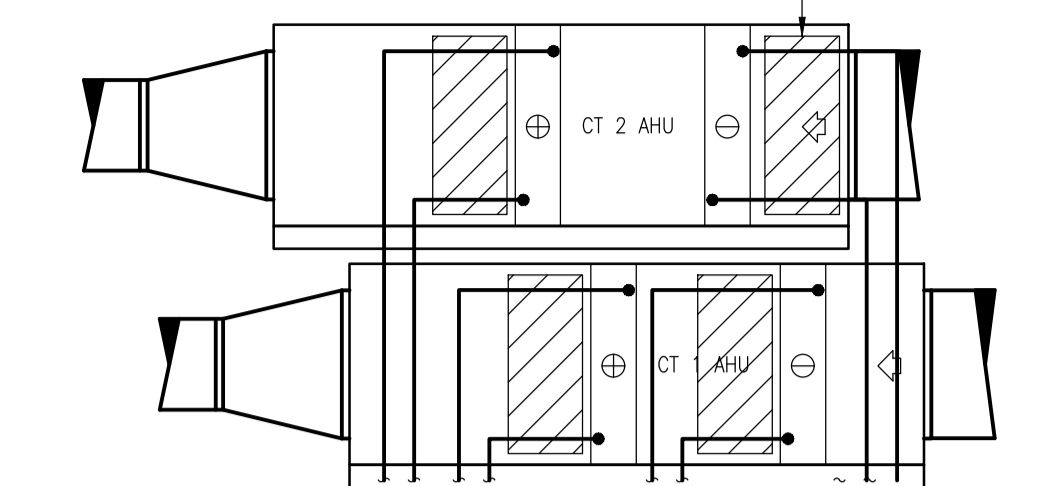


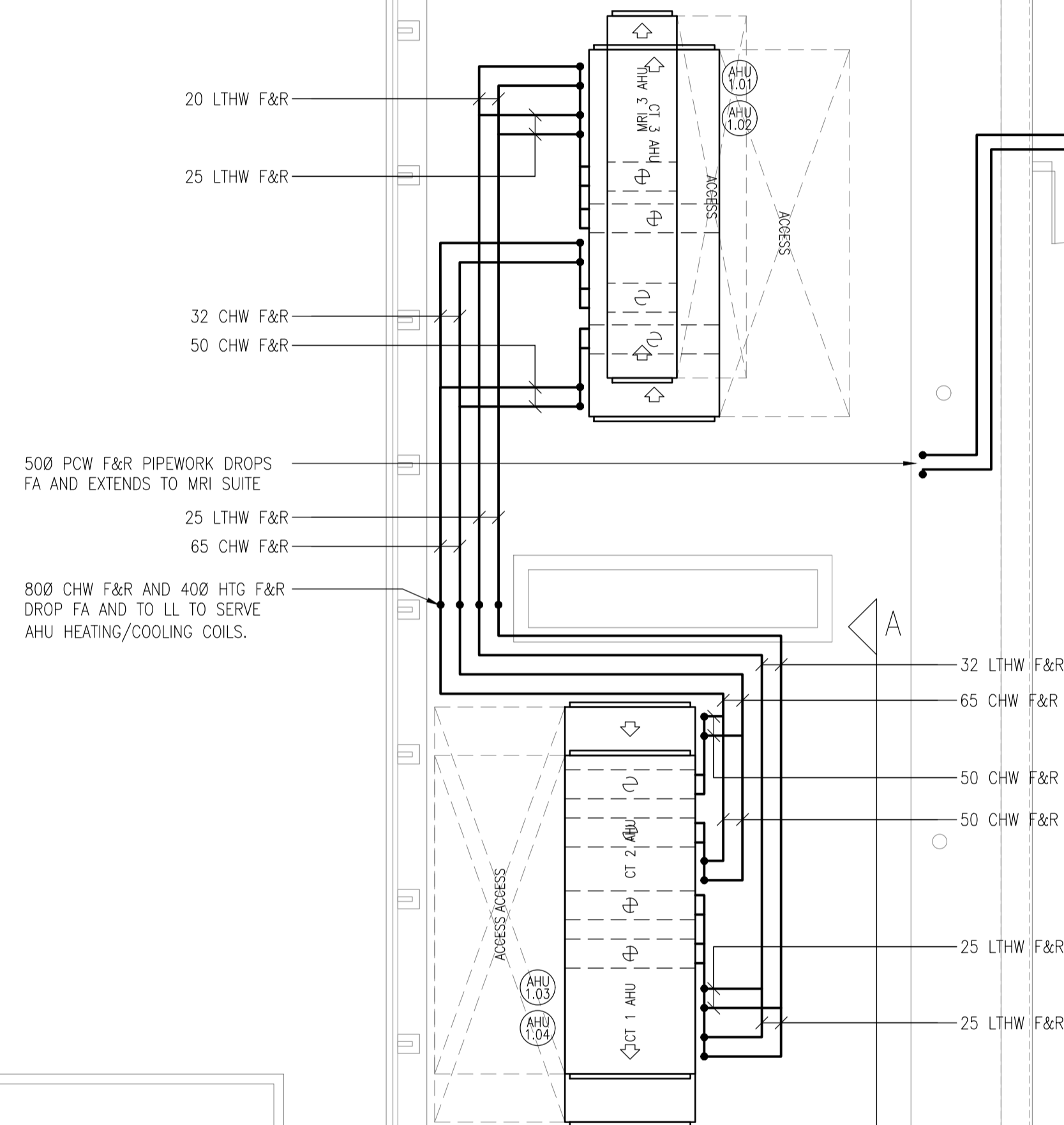
COIL VALVE ARRANGEMENTS. REFER TO RSP DRAWING M-09XX3 FOR FURTHER DETAILS



SECTION A-A: INDICATIVE LAYOUT OF HEATING/COOLING COILS & PIPEWORK DISTRIBUTION

NEW QUENCH PIPE RISES TA TO DISCHARGE TO ATMOSPHERE IN SUITABLE LOCATION. REFER TO DETAIL ON RSP DRAWING 2345-RSP-XX-XX-DR-M-09XX1

500 PCW F&R PIPEWORK DROPS TO PENETRATE FACADE AT HL GROUND FLOOR TO SERVE MRI SUITE.



20 LTHW F&R

25 LTHW F&R

32 CHW F&R

50 CHW F&R

500 PCW F&R PIPEWORK DROPS FA AND EXTENDS TO MRI SUITE

25 LTHW F&R

65 CHW F&R

800 CHW F&R AND 400 HTG F&R DROP FA AND TO LL TO SERVE AHU HEATING/COOLING COILS.

32 LTHW F&R

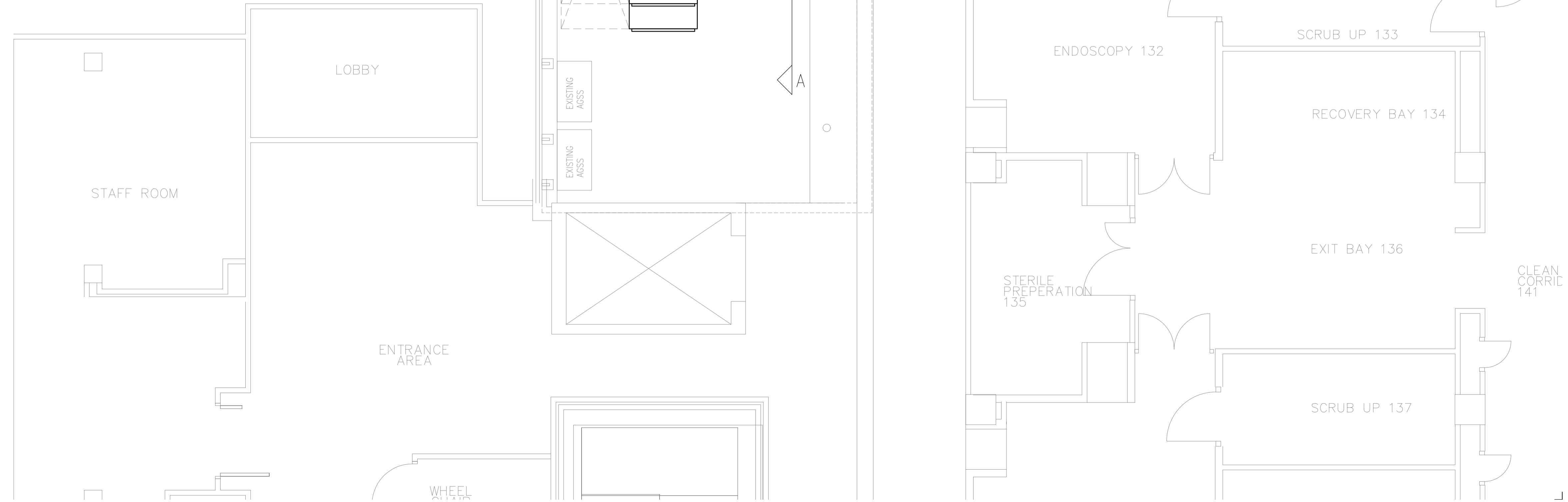
65 CHW F&R

50 CHW F&R

50 CHW F&R

25 LTHW F&R

25 LTHW F&R



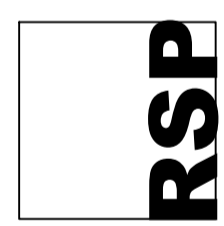
The Richard Stephens Partnership Limited own the copyright to the building services engineering content of this drawing which is not to be used copied published or reproduced in whole or in part in any form without written consent.

notes

- DO NOT SCALE FROM THIS DRAWING
- THIS DRAWING TO BE READ IN CONJUNCTION WITH RELEVANT ARCHITECTURAL AND STRUCTURAL DRAWINGS, OTHER SERVICES DRAWINGS AND SPECIFICATIONS

T1	18.03.22	TENDER ISSUE	LR	SVC
rev	date	description	dm	chk

The Richard Stephens Partnership Limited
Consulting Engineers
 Mill Court
 Mill Hill
 Edinbridge
 Kent TN8 5DB
 Tel: 01732 782300
 Fax: 01732 782340
 E-mail: mail@theRSP.co.uk
 Website: www.theRSP.co.uk



client
**ROYAL FREE LONDON
 NHS FOUNDATION TRUST**

architect
ANSELL & BAILEY

project
**ROYAL FREE HOSPITAL,
 LONDON
 IMAGING REFURBISHMENT**

title
**FIRST FLOOR
 PIPED SERVICES LAYOUT**

date	DEC 2021	scale	1:50 @ A1
designed	LR	cad	RSP
checked	SVC	approved	

PRELIMINARY DRAWING
 drawing no. 2345-RSP-XX-01-DR-M-04011 rev T1