

Planning Conditions Discharge

Condition 5b - 5e

Development Site at 65 Kingsway London WC2B 6TD
Ref. 2019/6088/P

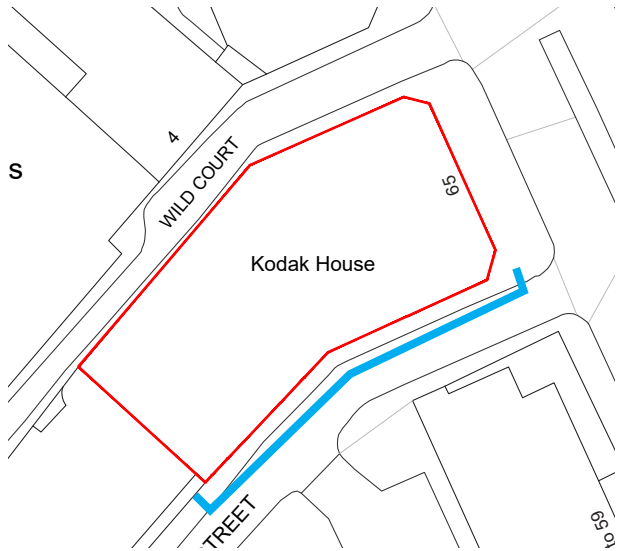
31.03.22

Revision: 0.

Before the relevant part of the work is begun, detailed drawings, or samples of materials as appropriate, in respect of the following, shall be submitted to and approved in writing by the local planning authority:

- b) Details including elevations, plans and sections (scale 1:10) of all new ventilation grills and external doors;
- c) Details including elevations, plans and sections (scale 1:20) of the means of enclosure of the roof terrace including all railings
- d) Details including elevations, plans and sections (scale 1:20) of the louvred metal plant screen enclosure
- e) Manufacturer's specification details of all facing materials (to be submitted to the Local Planning Authority) and samples of those materials (to be provided on site).

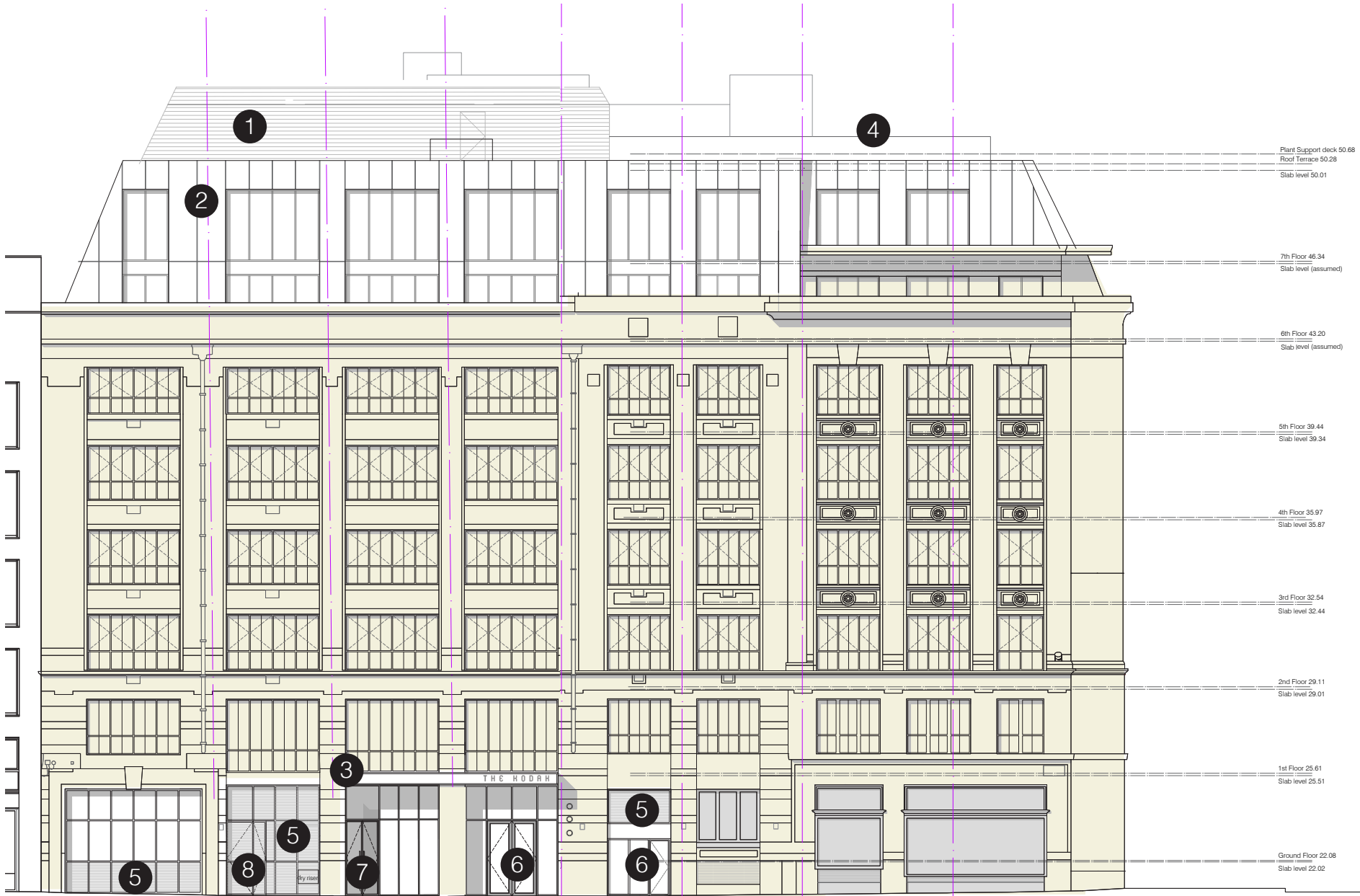
**Condition 5(a) relating to windows
already discharged.*

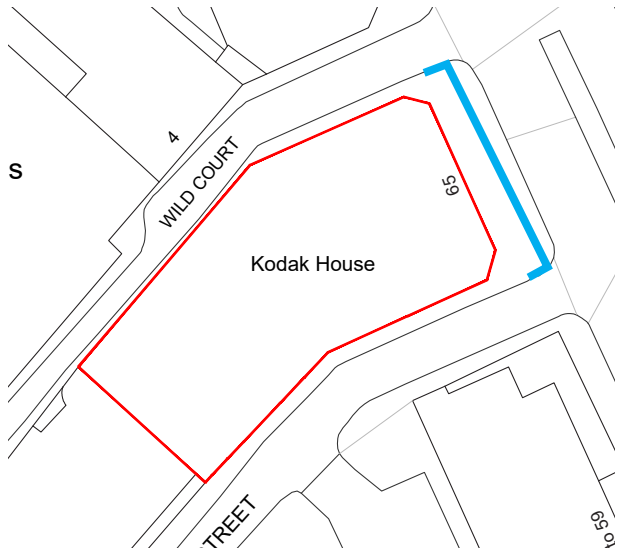


- 1 Louvred Plant Screen
- 2 Zinc cladding, Standing seam
- 3 Pressed Metal cladding - Canopy
- 4 Metal Balustrade
- 5 New Ventilation grilles
- 6 External door - glass with metal frame
- 7 External door - solid metal
- 8 External door - Louvred

**Condition 5(A) relating to windows
already discharged.*

Existing Facade Retained

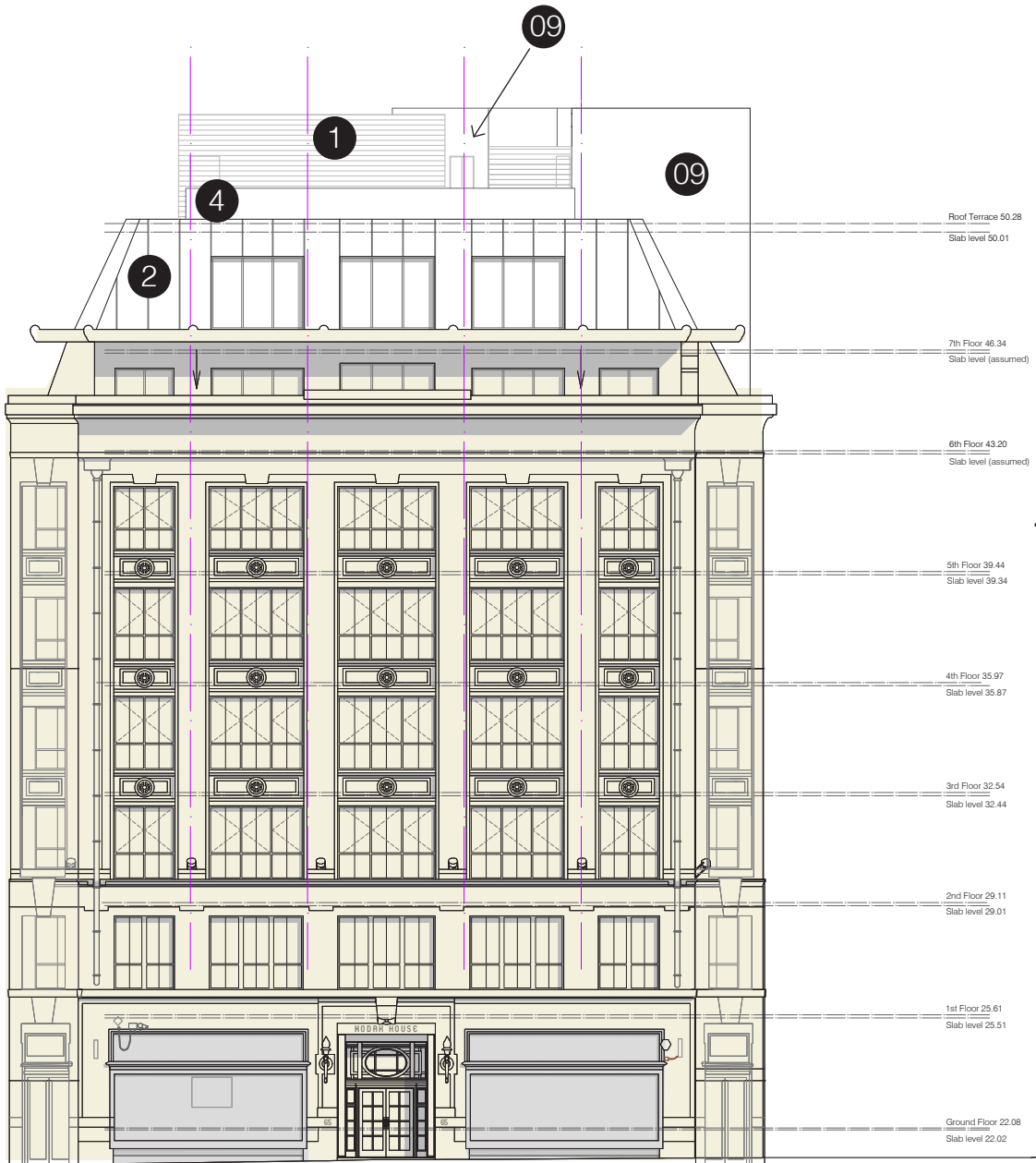


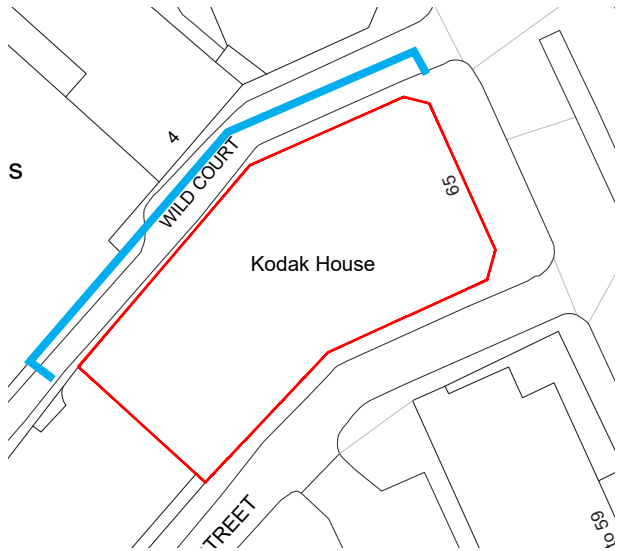


- 1 Louvred Plant Screen
- 2 Zinc cladding, Standing seam
- 3 Pressed Metal cladding - Canopy
- 4 Metal Balustrade - Terrace
- 5 Ventilation grilles
- 6 External door - glass with metal frame
- 7 External door - solid metal
- 8 External door - Louvred
- 9 Render

**Condition 5(A) relating to windows
already discharged.*

Existing Facade Retained

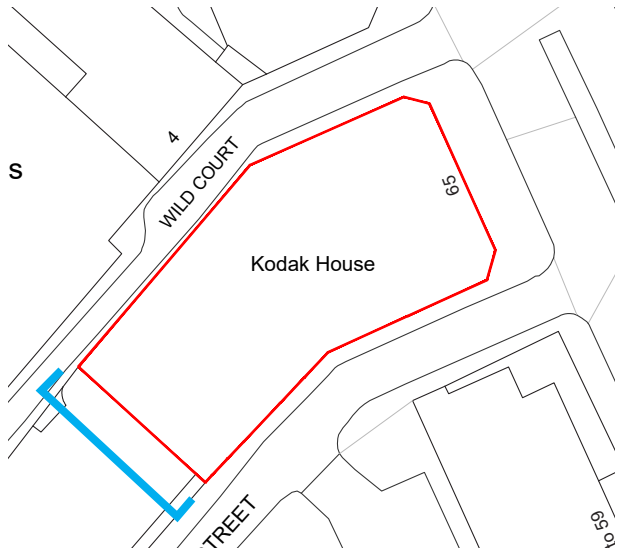




- 1 Louvred Plant Screen
- 2 Zinc cladding, Standing seam
- 3 Pressed Metal cladding - Canopy
- 4 Metal Balustrade - Terrace
- 5 New Ventilation grilles
- 6 External door - glass with metal frame
- 7 External door - solid metal
- 8 External door - Louvred
- 9 Render

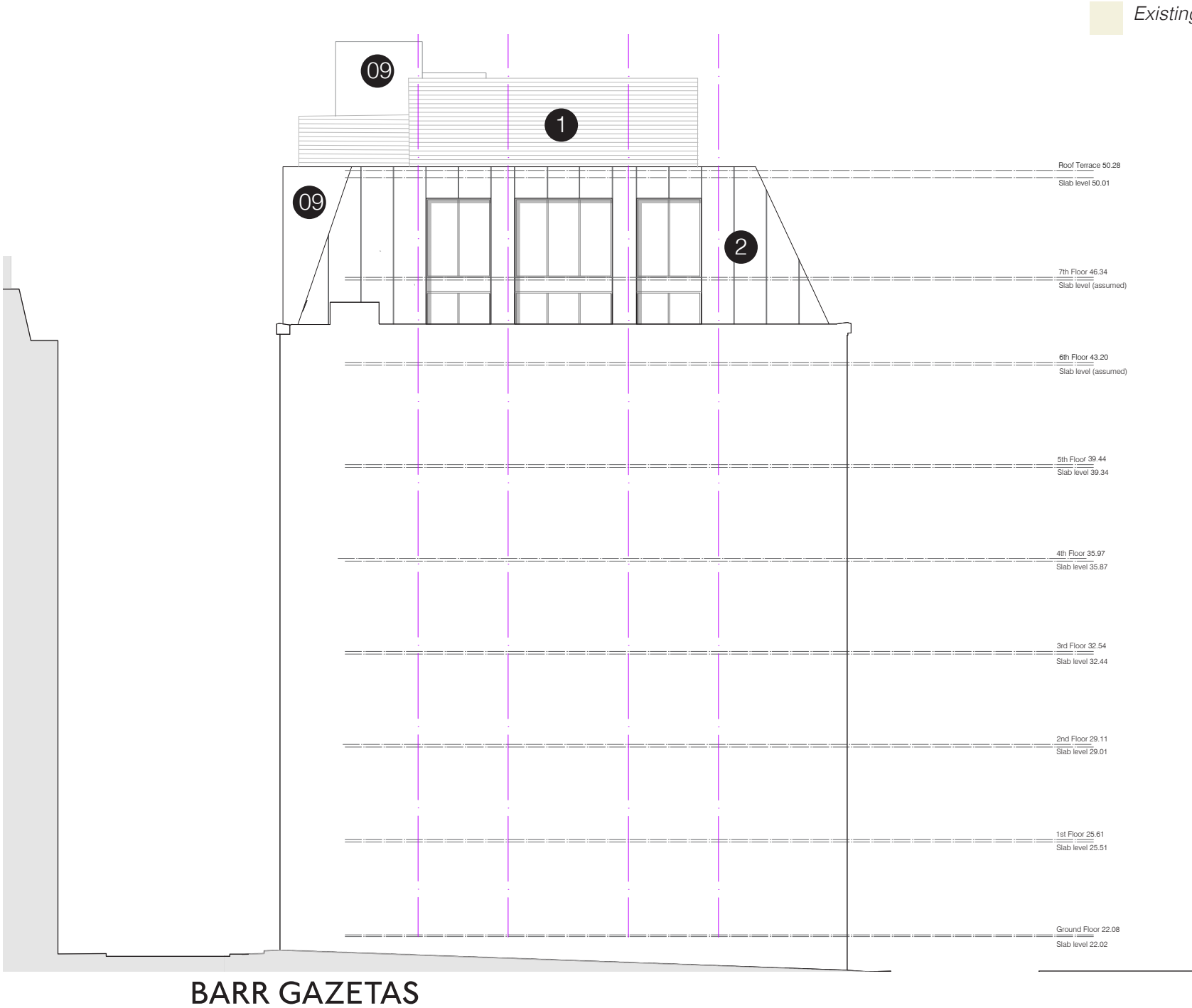
**Condition 5(A) relating to windows
already discharged.*









- 1 Louvred Plant Screen
- 2 Zinc cladding, Standing seam
- 3 Pressed Metal cladding - Canopy
- 4 Metal Balustrade - Terrace
- 5 New Ventilation grilles
- 6 External door - glass with metal frame
- 7 External door - solid metal
- 8 External door - Louvred
- 9 Render

**Condition 5(A) relating to windows
already discharged.*




| Number | Item | Finish | Category | Condition Ref | Location | Sample Photograph of Finish | Manufacturers spec / drawing Ref |
|--------------|----------------------|-------------------|-------------------|---------------|----------------------------------|---|----------------------------------|
| 1.0 External | | | | | | | |
| 1 | Louvred Plant Screen | PPC Grey RAL 7042 | Roof Plant Screen | 5d / 5e | Roof |  | Ref no.01 |
| 2 | Zinc Cladding | Pigmento Brown | Cladding | 5e | 6th and 7th Floor all Elevations |  | N/A |

| | | | | | | | |
|---|------------------------|---------------------|------------|----|---------------------|--|-----------|
| 3 | Pressed Metal Cladding | PPC Black Aluminium | Cladding | 5e | Ground Floor Canopy |  | N/A |
| 4 | Metal Balustrade | PPC Black Metal | Balustrade | 5c | Roof Terrace |  | Ref no.04 |

| | | | | | | | |
|---|-------------------------------|-----------------------------|----------------|---------|--|---|-----------------------|
| 5 | Ventilation Grilles | PPC Black | Grilles | 5b / 5e | Keeley Street and Wild Court |  | N/A to match existing |
| 6 | External Door - Glass with me | Frames: PPC Black Aluminium | External Doors | 5b | Main Entrance Keeley Street. Soho coffee fire escape and Basement unit entrance Keeley Street. Wild Court entrnace |  | Ref no.06 |

| | | | | | | | |
|---|-----------------------------|-----------------|----------------|----|---|--|-----------------------|
| 7 | External Door - Solid metal | PPC black metal | External Doors | 5b | Cycle entrance door Keeley Street |  | Ref no.07 |
| 8 | External Door - Louvred | PPC Black | External Doors | 5b | Louvred Door for UKPN maintenance access Keeley street. |  | N/A to match existing |

| | | | | | | | |
|---|--------|-------|----------|----|---------------------------|---|-----------|
| 9 | Render | White | Cladding | 5e | Wild Court core extension |  | Ref no.09 |
|---|--------|-------|----------|----|---------------------------|---|-----------|