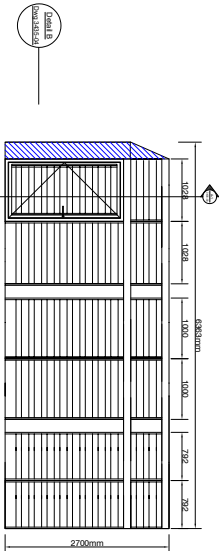


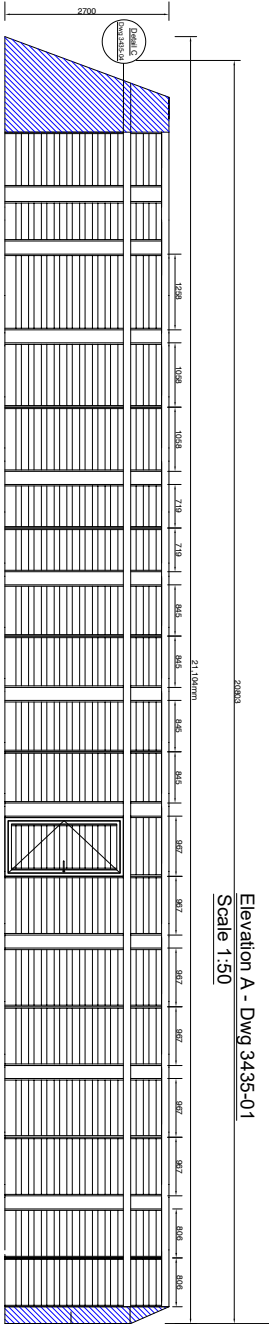
02-MAR-2022
Gilbert-Ash
BOUCHER ROAD

RECEIVED

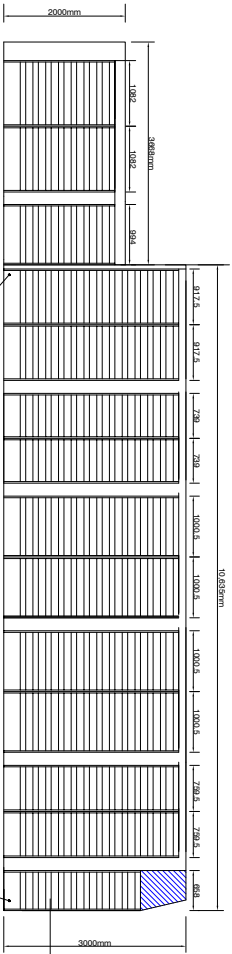
02-MAR-2022
Gilbert-Ash
BOUCHER ROAD



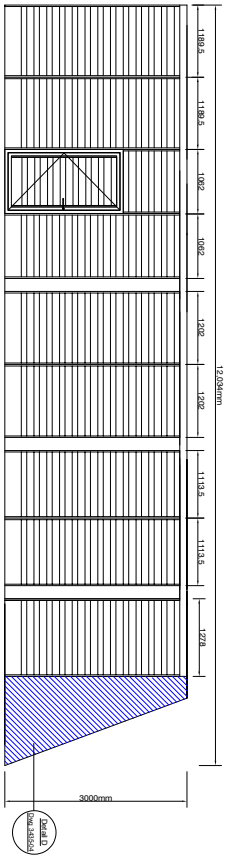
Elevation A - Dwg 3435-01
Scale 1:50



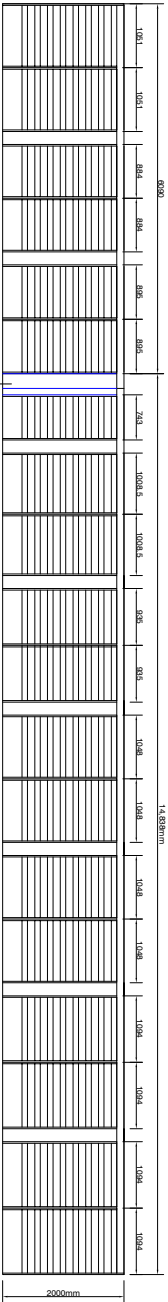
Elevation B - Dwg 3435-01
Scale 1:50



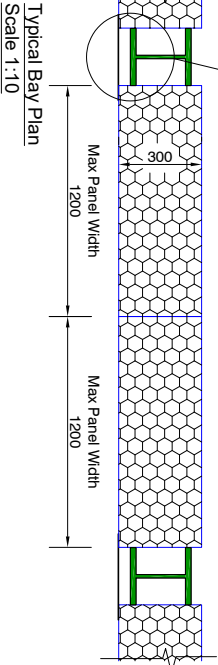
Elevation C - Dwg 3435-01
Scale 1:50



Elevation D - Dwg 3435-01
Scale 1:50



Elevation D - Dwg 3435-01
Scale 1:50



Typical Bay Plan
Scale 1:10

2mm gauge ppc aluminium blanking plate to cover all vertical steel columns between bays.

Copyright 2007
This drawing is the property of SPS Louvre Systems Ltd and should not be
reproduced without the written permission of SPS Louvre Systems Ltd.

SPS Louvre Systems

Acoustic Louvers

SPS 300 Louvre series, comprising a single bank of blades mounted in a pre-assembled frame. The casing and bladed uppers are fabricated from pre-galvanised sheet steel with acoustic mineral wool, density (45kg/m³) inlaid to the blades. Perforated steel sheet is installed to the rear and underpinned the blades.

Door Technology

3 no Stainless Steel Hinges Per Leaf
Euro cylinder dead lock with thumb turn release.

Finish

Front face only finished in acrylic paint.
Colour reference to be

COLOR: RAL 9005

Dimensions

Site dimension to be taken prior to manufacture by SPS.



NOTES

Due to the shape & interfaces of corner details, a solid blanking will be used & will be polyester powder coated to match louvers.

SPS Louvre Systems Limited



30 The Royston's
Willowhayne Estate
East Preston
West Sussex
BN16 2TR

Gilbert Ash

Kodak Building
65 Kingsway, London

Acoustic Louvre Elevations

3435

Acoustic Louvers

SPS 300 Louvre series, comprising a single bank of blades mounted in a pre-assembled frame. The casing and slatted uppers are fabricated from powder coated mild steel, the blades are fabricated from wood (density 48kg/m³) with a 10mm thick aluminium sheet steel is installed to the rear and underside of the blades.

Door Information

3 no Stainless Steel Hinges Per Leaf
Euro cylinder dead lock with thumb turn release.

Finish

Front face only finished in acrylic paint.

Colour reference to be:

COLOUR : RAL 9005

Dimensions

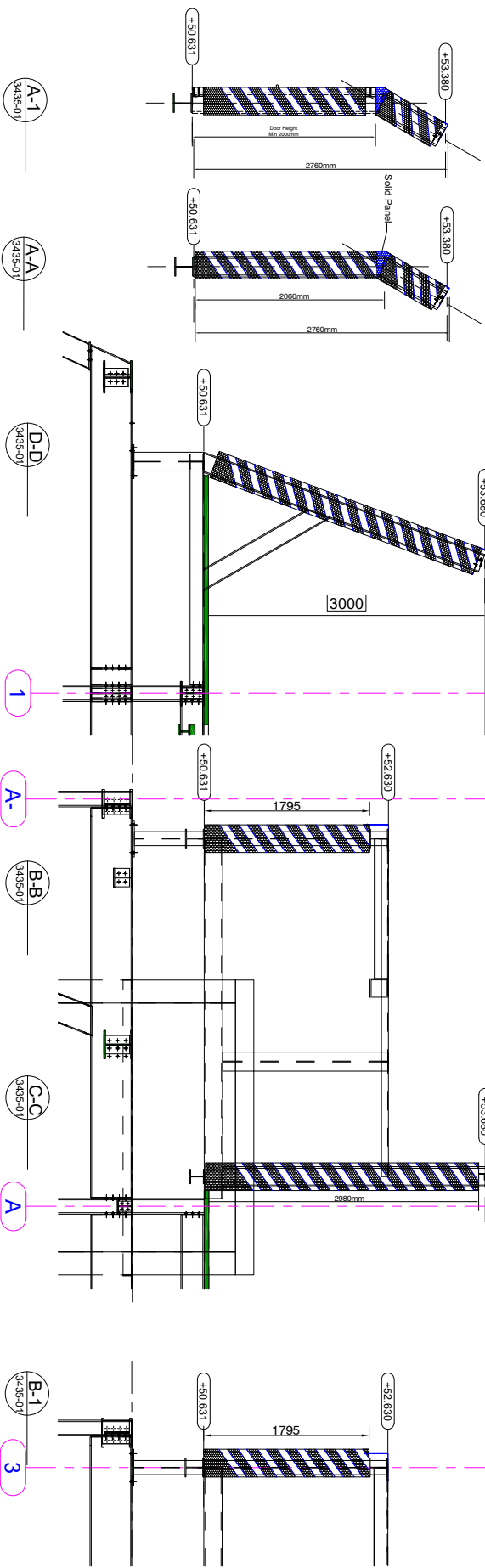
Site dimension to be taken prior to manufacture by SPS.

Top of Steel to Have Perimeter
Flashing By SPS

Top of Steel to Have Perimeter
Flashing By SPS

Top of Steel to Have Perimeter
Flashing By SPS

Top of Steel to Have Perimeter
Flashing By SPS



RECEIVED
02-MAR-2022
Gilbert-Ash
BOUCHER ROAD



30 The Royston's
Willowhayne Estate
East Preston
West Sussex
BN16 2TR

Project
Gilbert Ash
Kodax Building
65 Kingsway, London
1.50@ A1

Drawing No
Acoustic Louvre
Section Details
3435-03

3435

B

Rev	Date	Brief Description
B	01/03/2022	ISSUED FOR APPROVAL
A	16/09/21	ISSUED FOR APPROVAL

DO NOT SCALE FROM THIS DRAWING

SPS Louvre Systems Limited

SPS Louvre Systems

SPS 300 Louvre series, comprising a single bank of blades mounted in a pre-assembled frame. The casing and bladed uppers are fabricated from pre-galvanised sheet steel, with inorganic mineral wool density (45kg/m³) infill to the blades. Perforated sheet steel is installed to the rear and undersides of the blades.

Door Ironmongery

3 no Stainless Steel Hinges Per Leaf.
Euro cylinder dead lock with thumb turn release

Finish

Front face only finished in acrylic paint.
Colour reference to be:

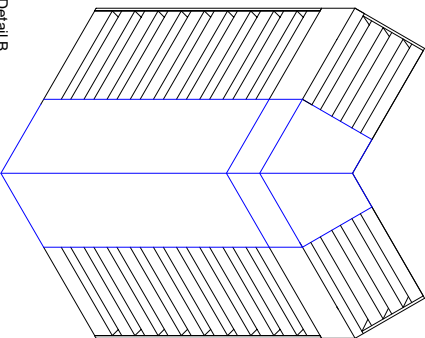
Colour reference to be:

COLOUR : RAL 9005

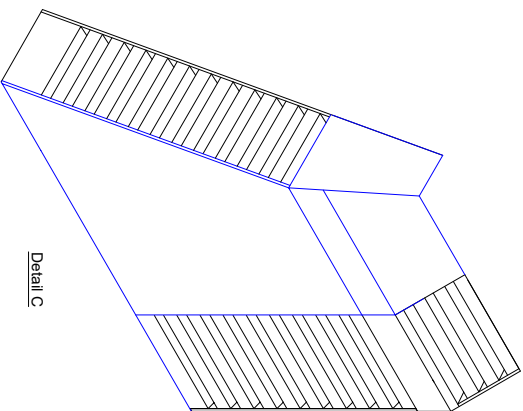
Dimensions
Site dimension to be taken prior to manufacture by SPS.



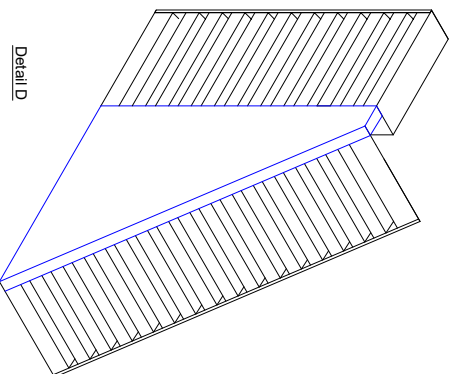
Detail B



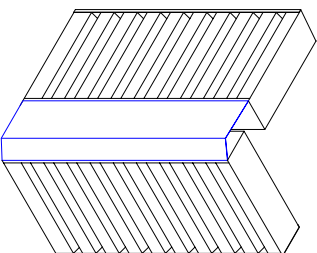
Detail C



Detail D



Detail E



B	01/03/2022	ISSUED FOR APPROVAL
A	15/09/2021	ISSUED FOR APPROVAL

DO NOT SCALE FROM THIS DRAWING



30 The Royston's
Willowhayne Estate
East Preston
West Sussex
BN16 2TR

Client	Gilbert Ash	Date	01/03/2022
Project	Kodex Building 65 Kingsway, London	Drawn to Scale	1:50@ A1
Drawing Title	Acoustic Louvre Flashing Details	Drawn By	GL
CAD File Reference	3405	Revision	34-35-04
		R	