



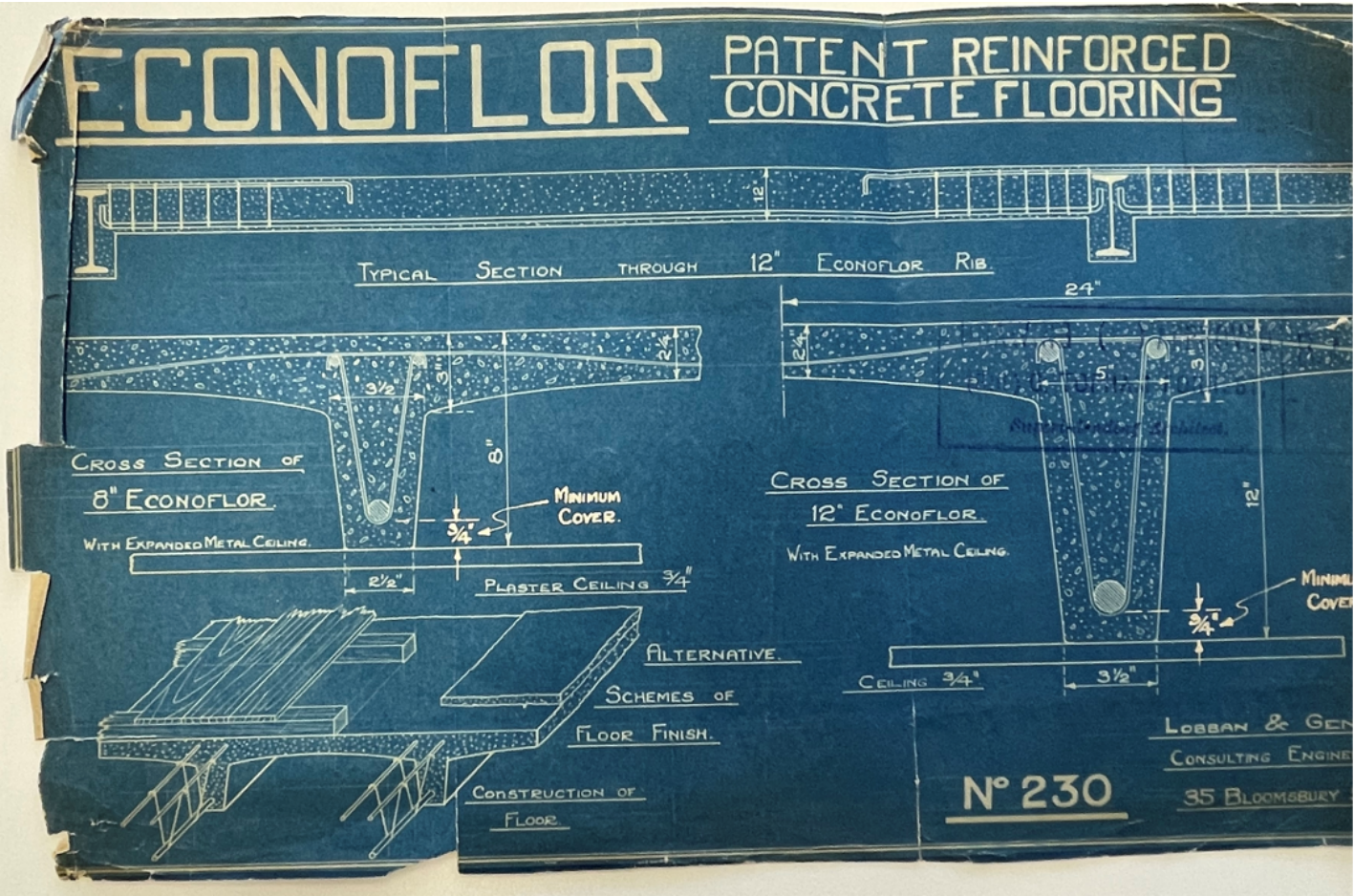
5

Example of exposed rebar to top of slab

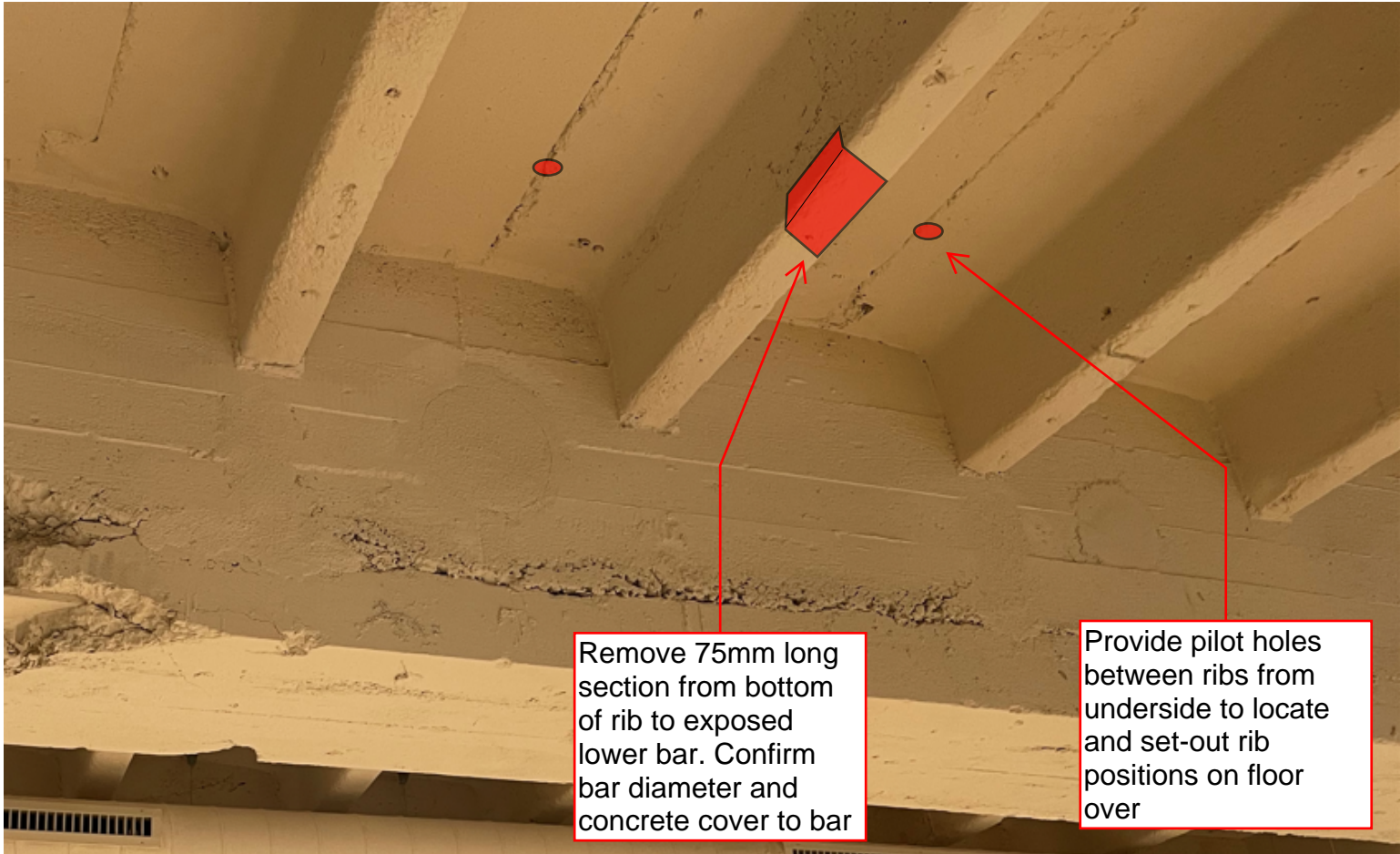


7

Example of brick stretcher removal



Record information of Victoria House Original Floor Construction

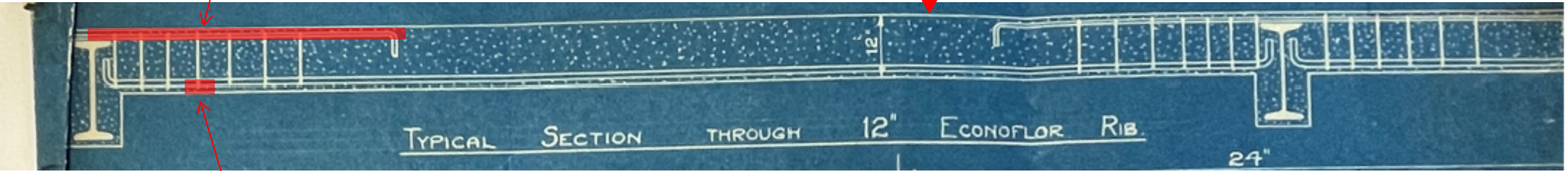


Site Photo of Victoria House Original Floor Construction

'Chase-out' 50mm wide section of concrete centred on rib. Confirm diameter of top longitudinal bars, diameter of links and centres of links. Confirm length of longitudinal bar from steel beam centreline.

Making good - Allow for reinstatement of concrete cover with concrete repair mortar (Fosroc Renderoc HB40) following inspection by the engineer. Allow for removal and replacement of existing floor finishes

SSL of slab referenced on plan



Remove 75mm long section from bottom of rib to exposed lower bar. Confirm bar diameter and concrete cover to bar

Job	Detail 8	Date	March 22
Title	Concrete rib investigations	Eng.	DW
Job No.	2812	Sheet	SK-INV-08
		Rev.	P1

