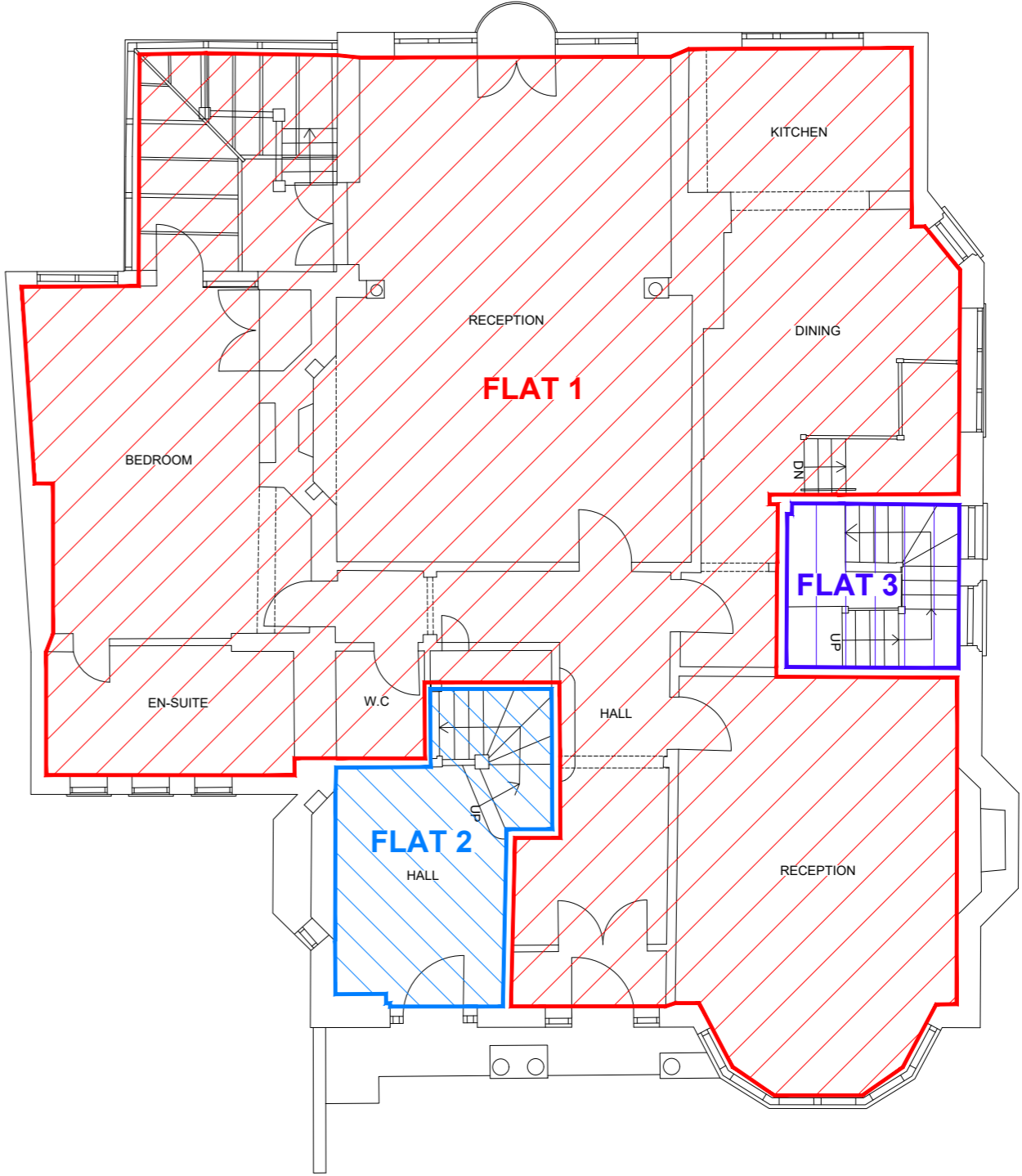
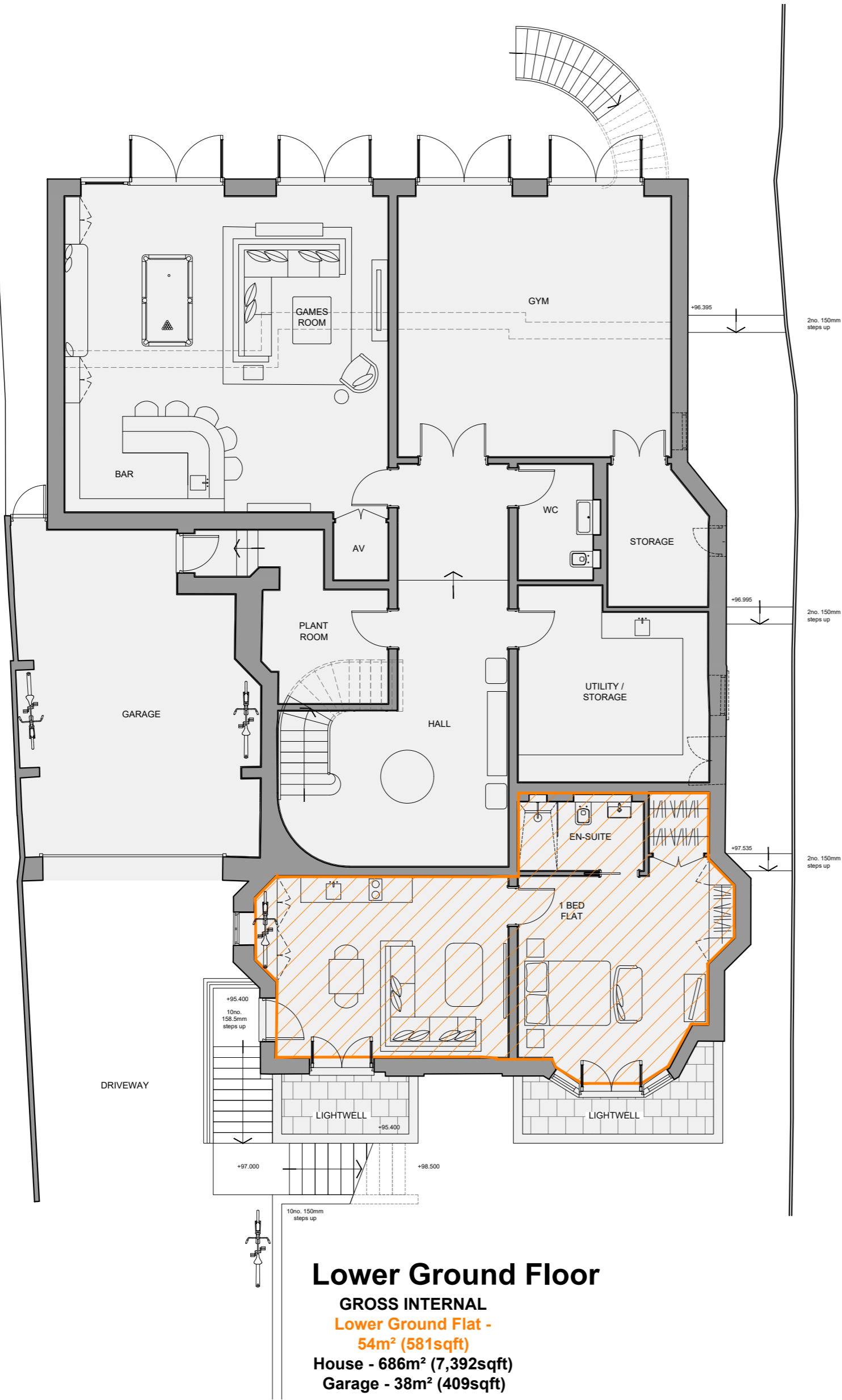


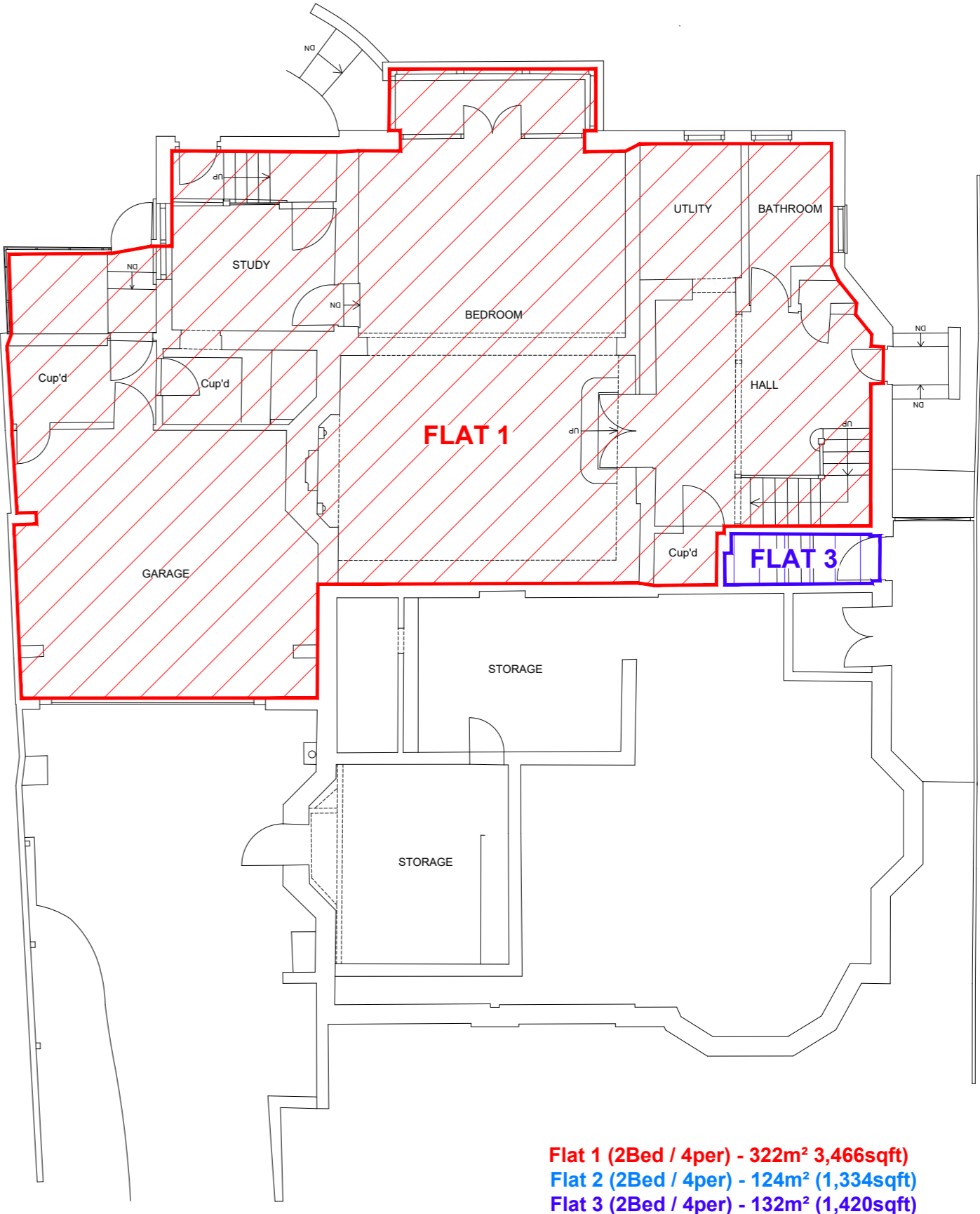
Ground Floor



Existing Ground Floor



Lower Ground Floor  
GROSS INTERNAL  
Lower Ground Flat - 54m² (581sqft)  
House - 686m² (7,392sqft)  
Garage - 38m² (409sqft)



Existing Lower Ground Floor

Flat 1 (2Bed / 4per) - 322m² 3,466sqft)  
Flat 2 (2Bed / 4per) - 124m² (1,334sqft)  
Flat 3 (2Bed / 4per) - 132m² (1,420sqft)



NOTES: This drawing is the property of GRIGGS and is issued on the condition that it is not reproduced, disclosed or copied to any unauthorised person without written consent. This drawing is to be read together with the specification and related drawings.	REVISIONS:				
	Rev:	By:	Chk:	Date:	Description:
© GRIGGS					

Project: 61 Redington Road, Hampstead, London, NW3 7RP.				
Title: Lower Ground & Ground Floor Comparisons.				
Drawn: KAT	Checked:	Date: Mar 2022	Scale: 1:100	Size: A1
Project No: 1571	Drawing No: PL 13		Revision: -	

PLANNING



EST. 1968