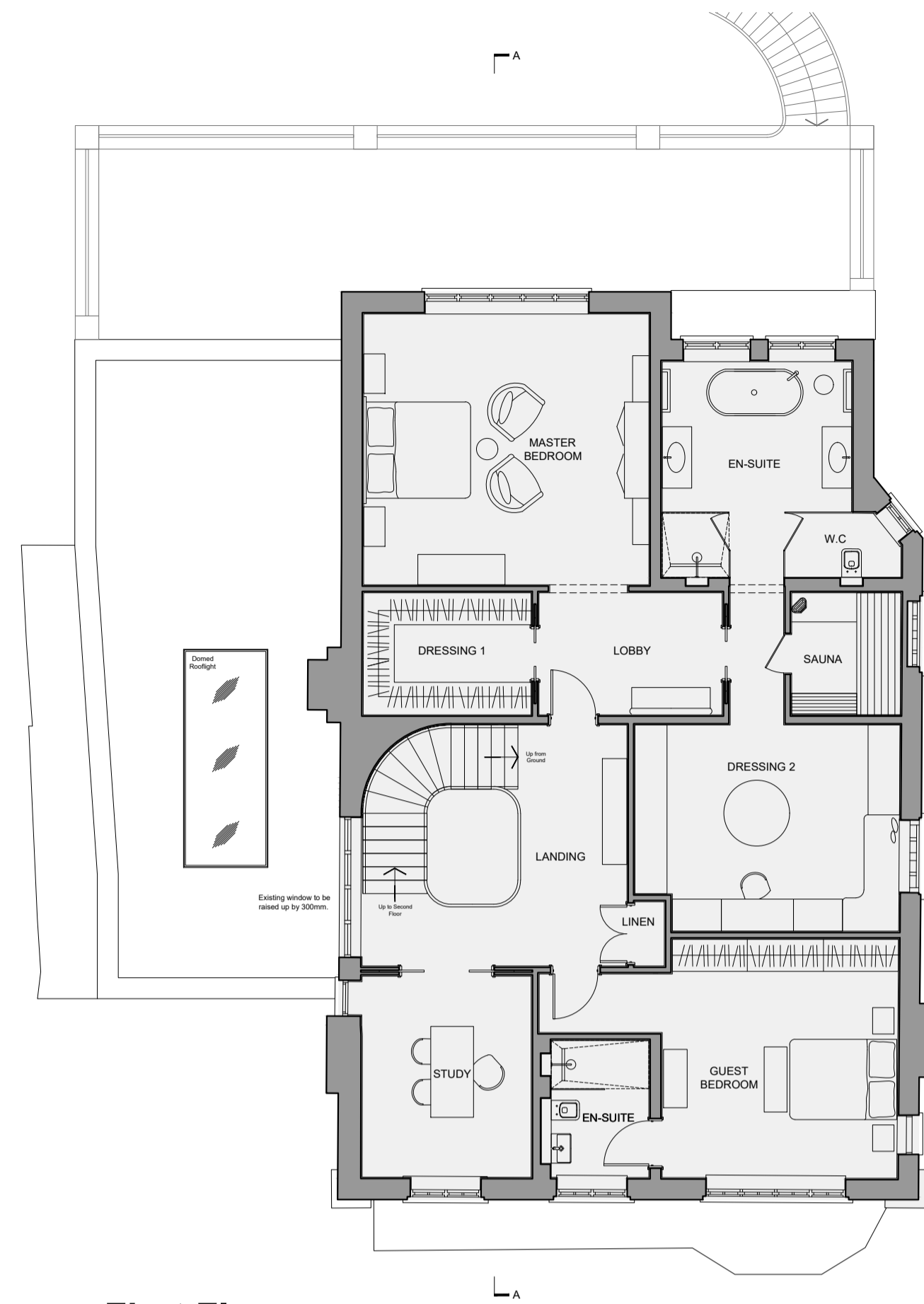


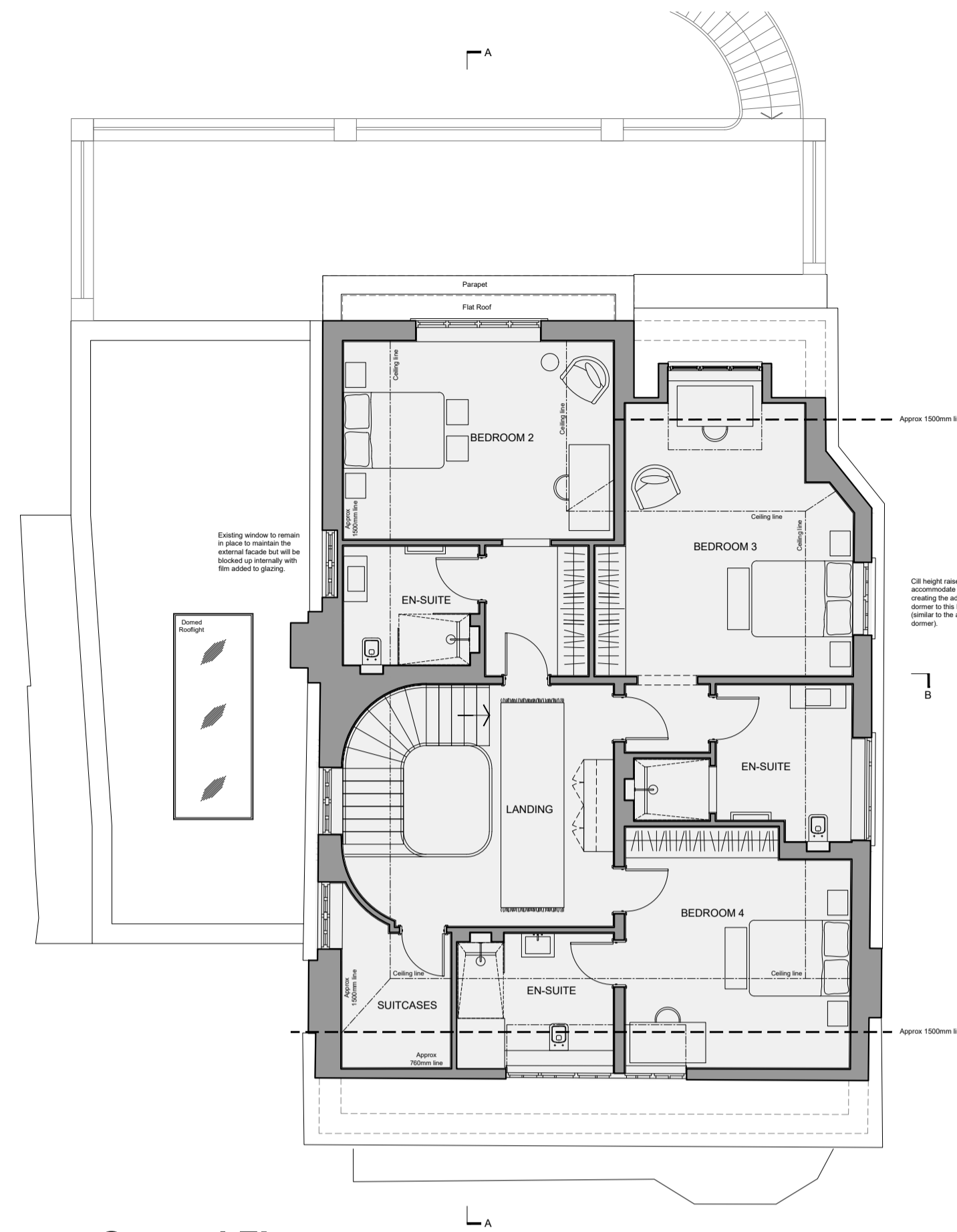
NOTES:
 This drawing is the property of GRIGGS and is issued on the condition that it is not reproduced, disclosed or copied to any unauthorised person without written consent.
 This drawing is to be read together with the specification and related drawings.

© GRIGGS

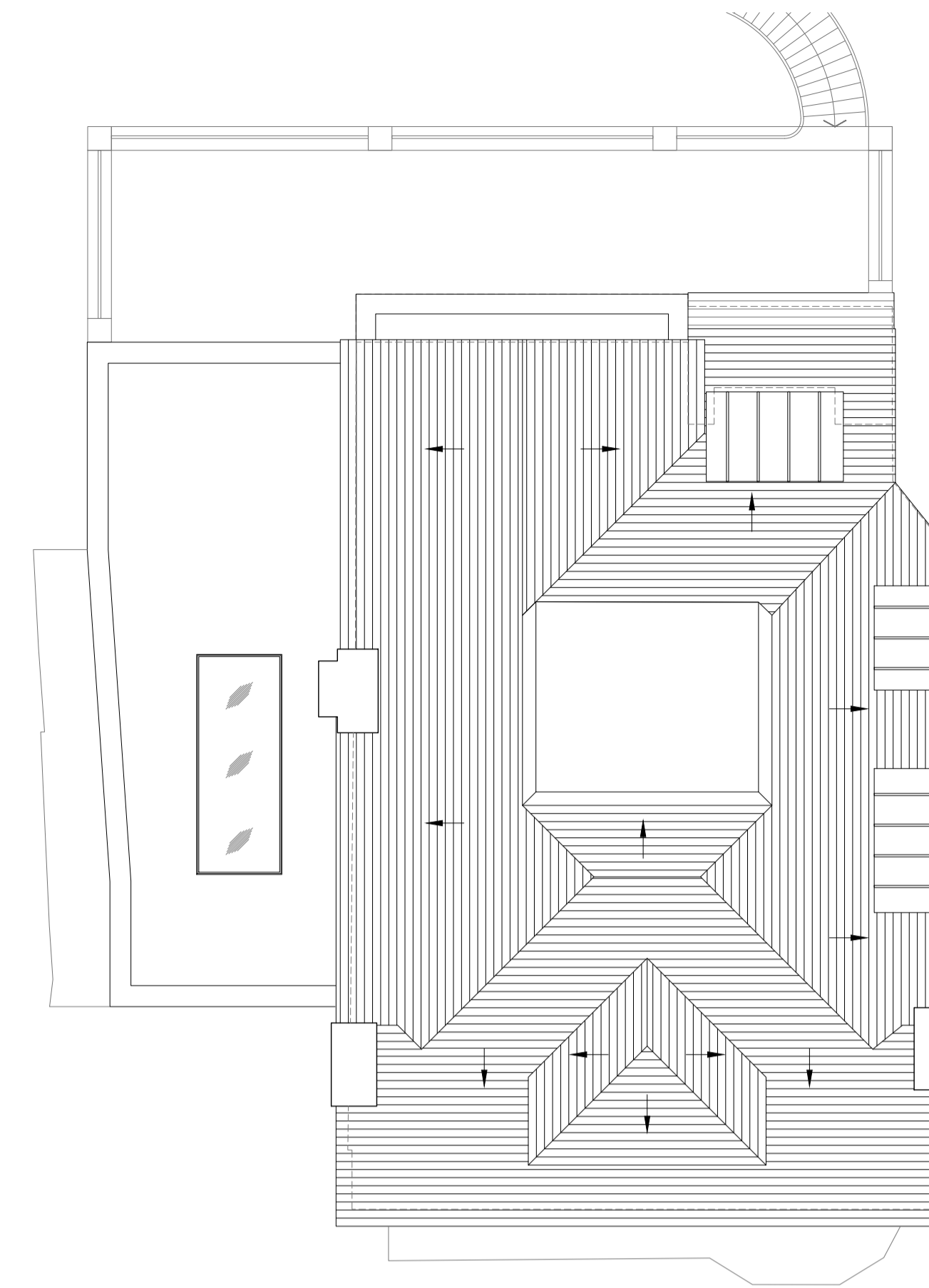
REVISIONS:			
Rev:	By:	Check:	Date:



First Floor



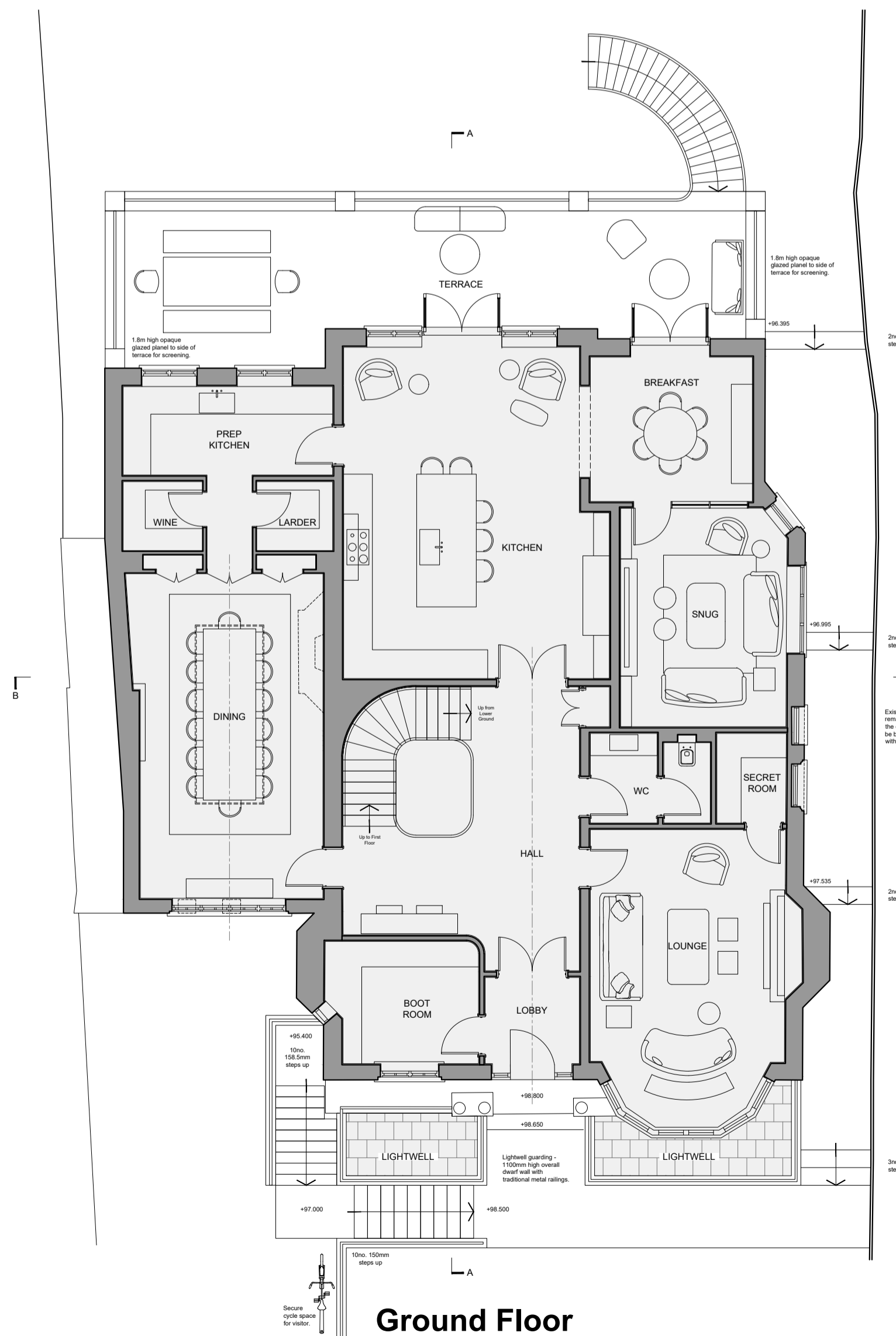
Second Floor



Roof Plan



Lower Ground Floor



Ground Floor

GROSS INTERNAL
 Lower Ground - 234m² (2,520sqft)
 Ground - 219m² (2,357sqft)
 First - 155m² (1,668sqft)
 Second - 132m² (1,421sqft)
 Total - 740m² (7,965sqft)
 Garage - 38m² (409sqft)

PLANNING

Project:
 61 Redington Road,
 Hampstead, London,
 NW3 7RP.
 Title:
 Proposed Floor Plans

Drawn: KAT	Checked:	Date: Mar 2022	Scale: 1:100	Size: A1
Project No: 1571		Drawing No: PL10		Revision: -

