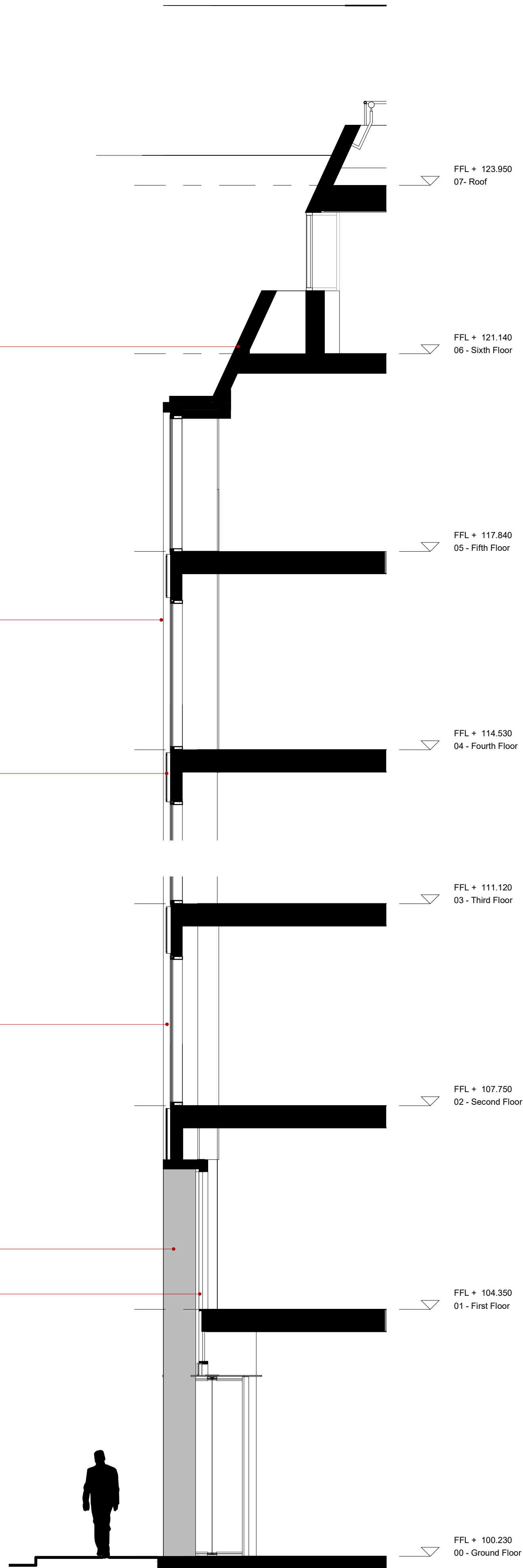
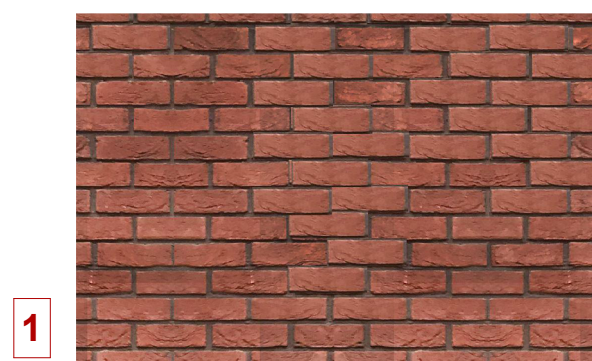


1 Proposed North-East Elevation - Detail  
1 : 50

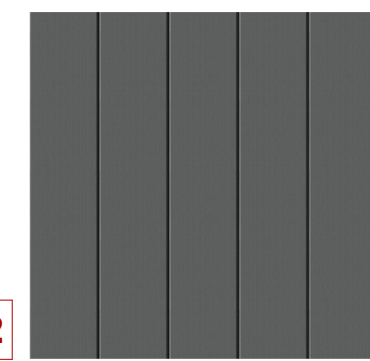


3 Proposed North-East Elevation - Section  
1 : 50

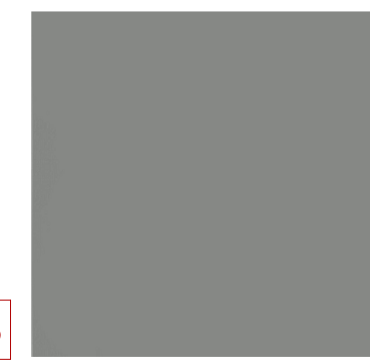
Material Sample images as reference only



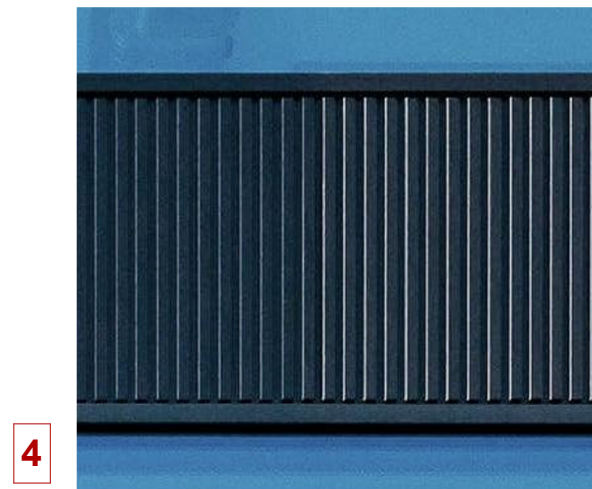
1 Existing red brickwork



2 Dark grey metal cladding



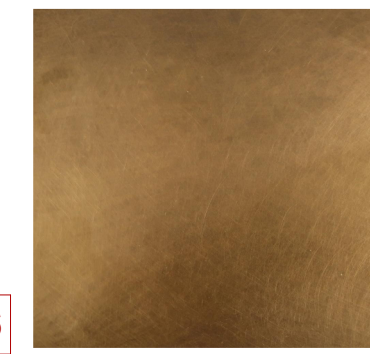
3 Grey metal frame



4 Textured spandrel panel



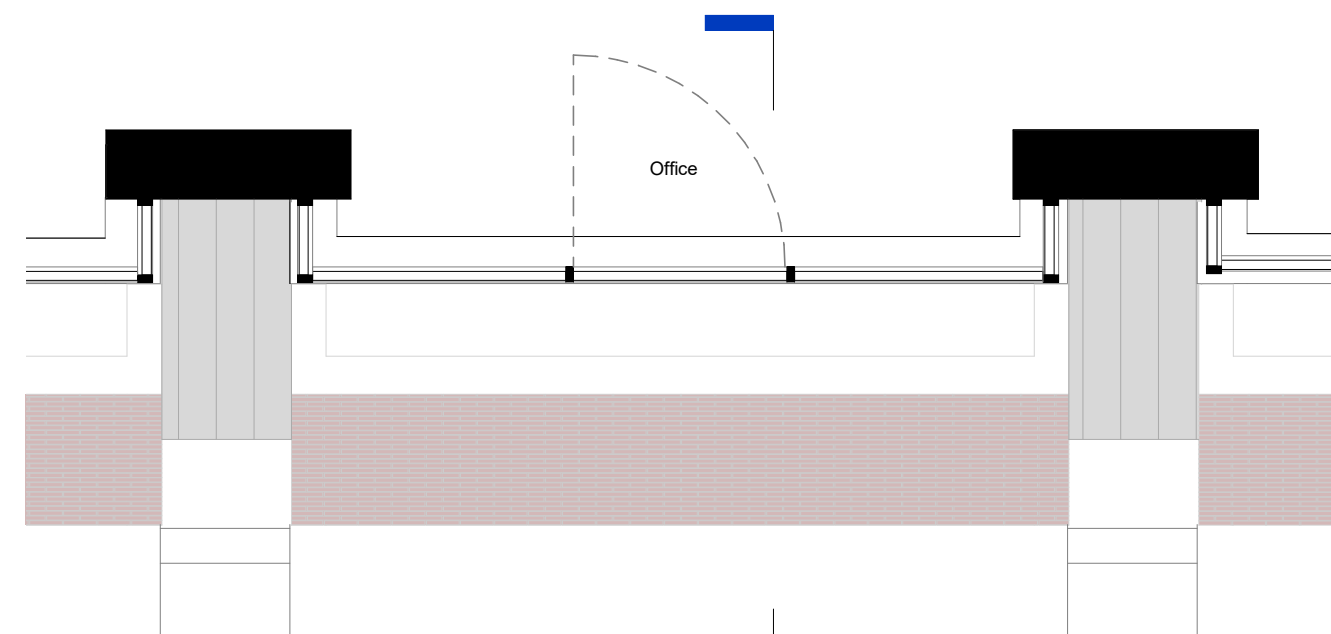
5 Curtain wall glazing



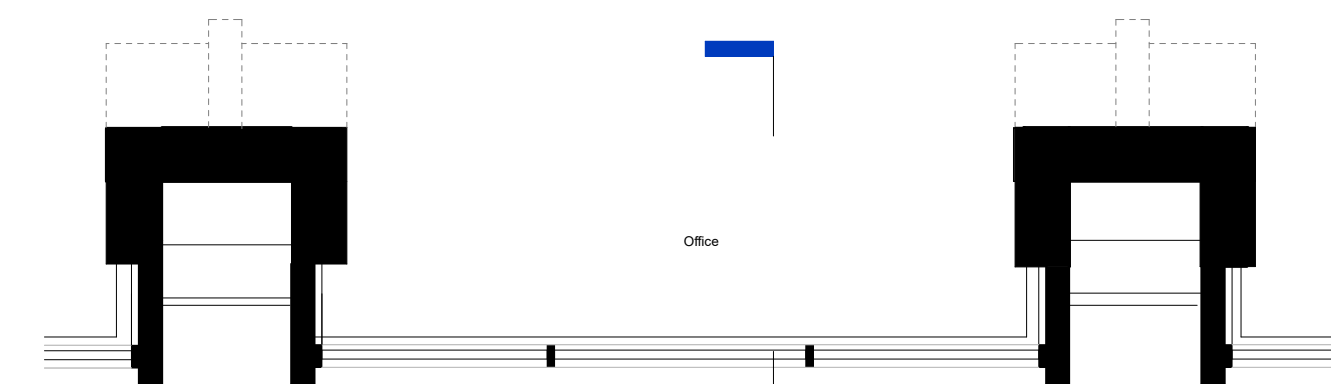
6 Coloured entrance metal frame



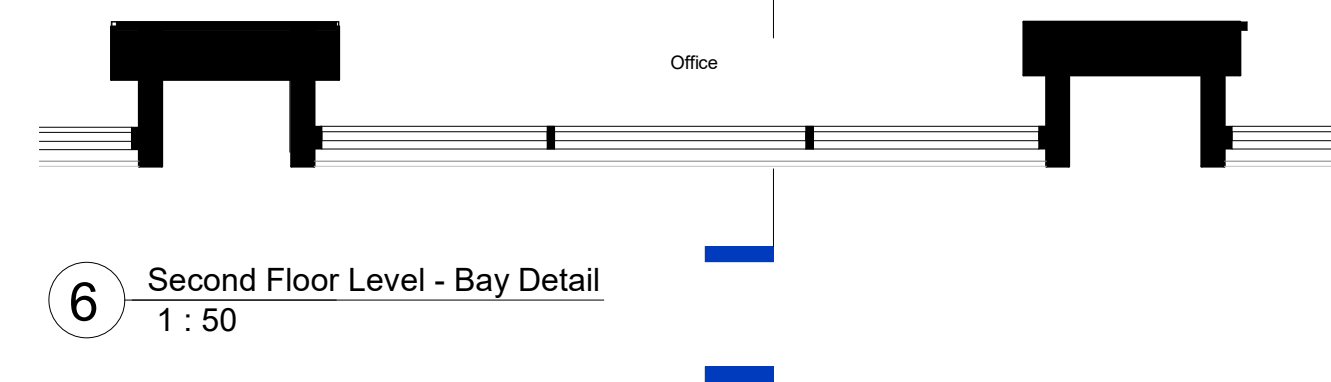
7 Curtain wall with silicone joint



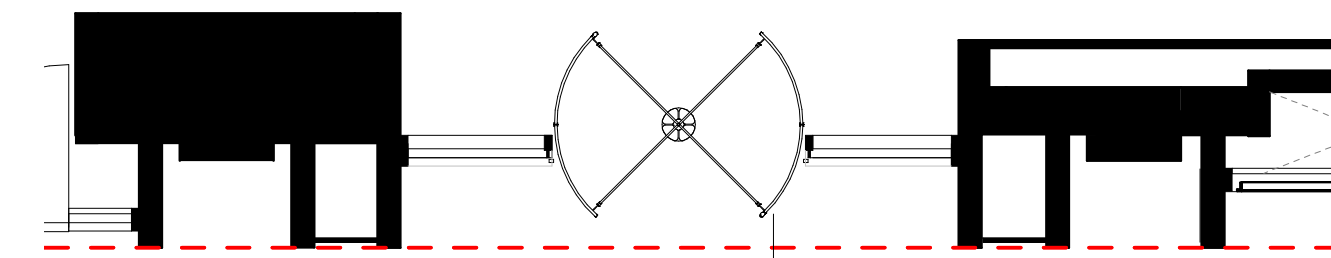
7 Sixth Floor Level - Bay Detail  
1 : 50



2 Fifth Floor Level - Bay Detail  
1 : 50



6 Second Floor Level - Bay Detail  
1 : 50



5 Ground Floor Level - Bay Detail  
1 : 50

- Do not scale from this drawing, except for planning purposes.  
- Check all dimensions on site.  
- Subject to survey.  
- Subject to site inspection.  
- Site boundary lines are indicative only.

P-		11.04.2022	AS	Planning Application	
Rev	Date	By		Description	
Revision Schedule					

project  
164 Shaftesbury Avenue

title  
PROPOSED BAY DETAIL 2

sheet number  
**PL1251**

drawing status  
PLANNING

contract no.  
N/A

scale  
1 : 50 @ A1

date  
12/06/21

drawn by  
NG

checked by  
AS

project no.  
P21-024

drawing number  
CGL-Z1-XX-DT-A-PL1251

revision  
P-

child graddon lewis  
architects & designers  
Studio1  
155 Commercial Street  
Spitalfields  
London E1 6BJ  
T: +44 (0) 20 7539 1200  
E: [hq@cgluk.com](mailto:hq@cgluk.com)  
[www.cgluk.com](http://www.cgluk.com)