

NOTES:

COPYRIGHT RESERVED BY BAMFORD-MUMBY LTD T/A AB ASSOCIATES.  
DO NOT SCALE THIS DRAWING.  
DO NOT USE THIS DRAWING FOR ANY PURPOSE OTHER THAN DEFINED BY THE DRAWING STATUS  
CONTRACTOR TO CHECK ALL DIMENSIONS ON SITE PRIOR TO COMMENCEMENT OF WORKS. ANY DISCREPANCIES TO BE RAISED WITH THE ABA IMMEDIATELY.

LEGEND:

— AREA TO BE LICENSED

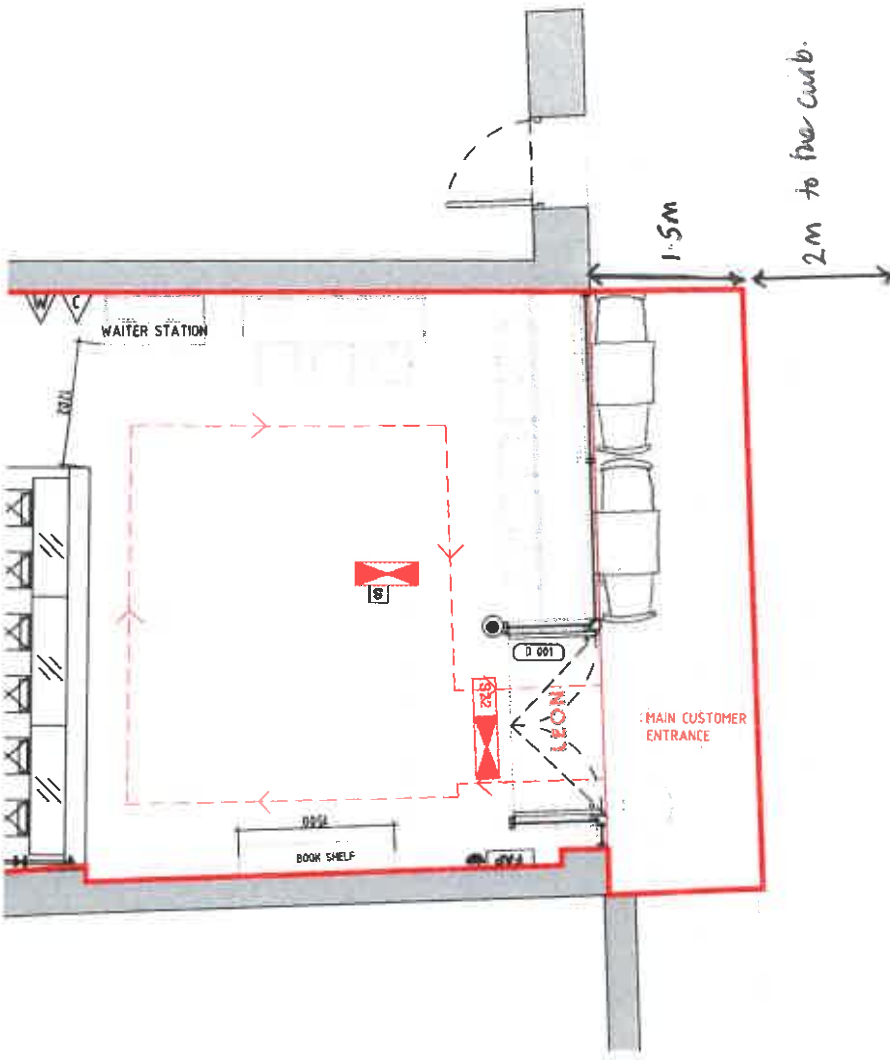
- ▼ CO2 Extinguisher
- ▼● Foam Extinguisher
- ▼⊕ Water Extinguisher
- W/ Wet Chemical
- ▼⊔ Fire Blanket

**1/2 HR FR SC** 1/2 Hour fire resistant self closing door with smoke seals and intumescent strips

**PD** Fire exit doors fitted with emergency push bar facility

**S13** Sign - Fire door keep shut

POINT OF CUSTOMER ACCESS



**FIRE ALARM**

A Fire Alarm system will be installed to BS5839 Part 1 2013 Code of practice for system design, installation, commissioning and maintenance, comprising of devices as indicated.

- FAP** FIRE ALARM PANEL
- MH** MAGNETIC DOOR HOLDER
- MANUAL CALL POINT
- K** HEAT DETECTOR
- S** SMOKE DETECTOR
- I** INDICATOR FOR VOID DETECTOR
- V** VOID DETECTOR
- ☎ SOUNDER
- ⊗ SOUNDER BEACON
- INTERFAC H = MVAC