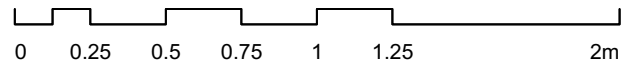
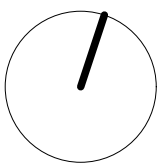
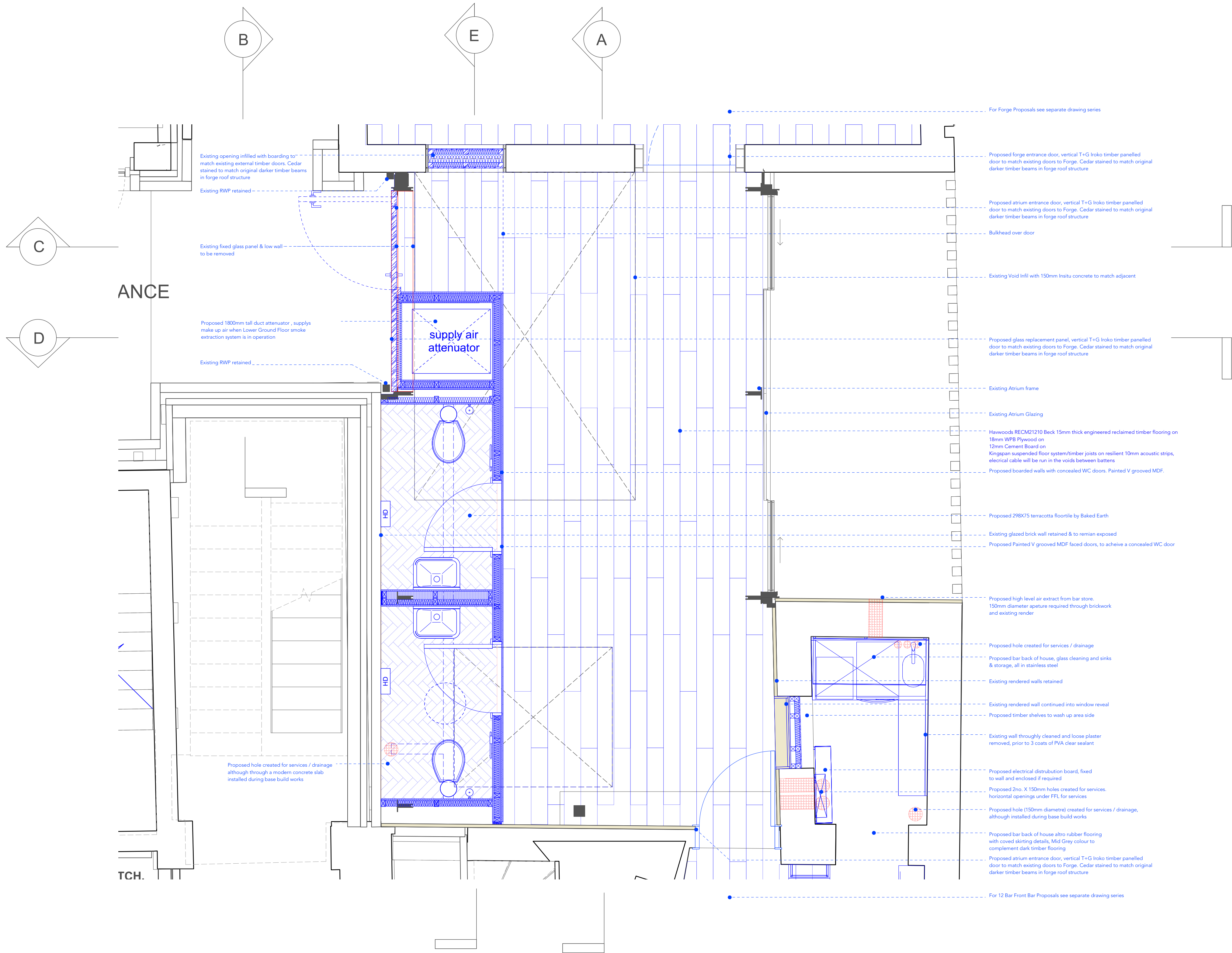


revision / date / amendments

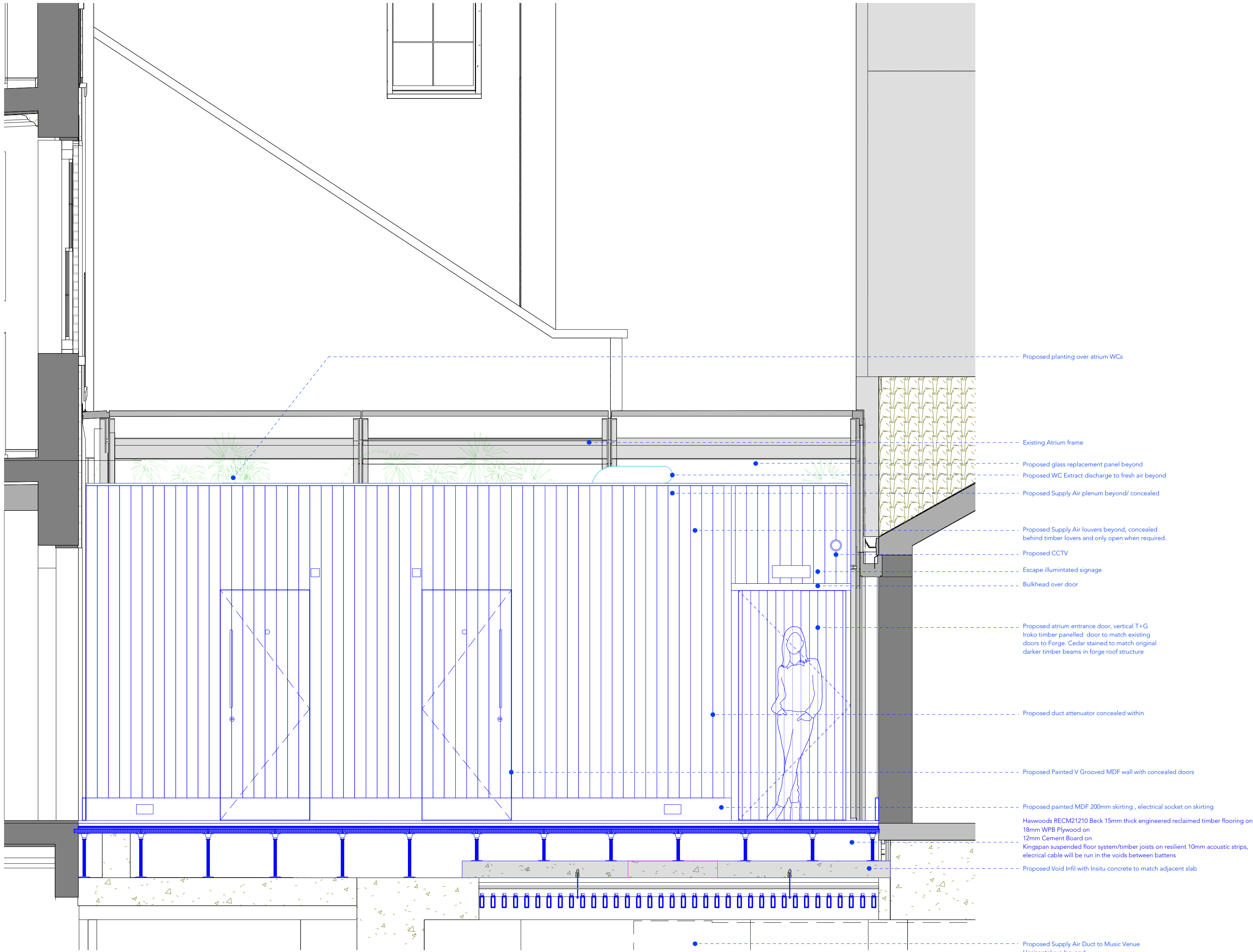


FOR PLANNING

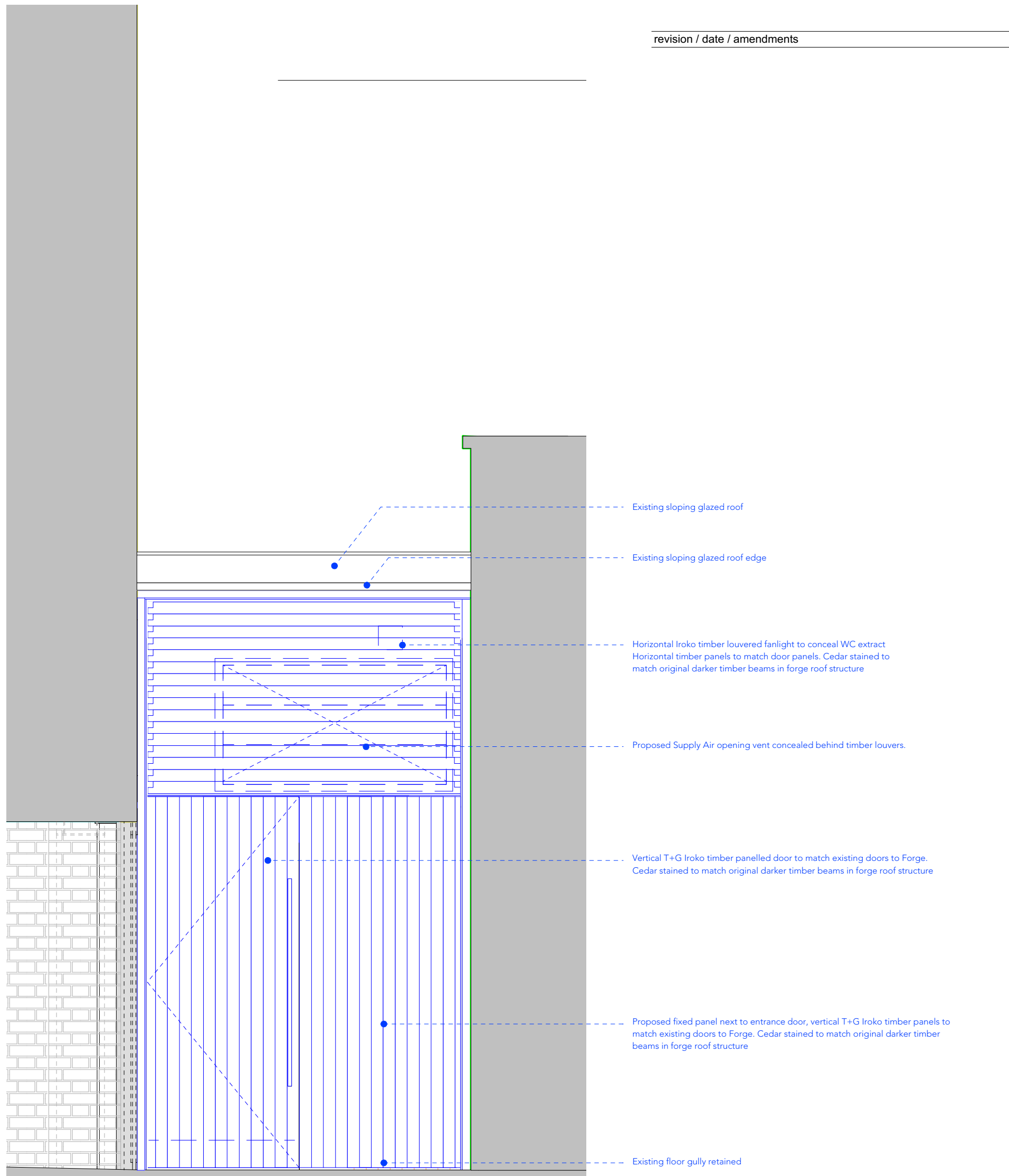
Archer Humphryes Architects

Basement
Central House
142 Central Street
London, United Kingdom
EC1V 8AR
T : +44 (0) 20 7251 8555

| | | | |
|---|-------------------|--------------------|---------------|
| project title ST. GILES OUTERNET | | | |
| drawing title Proposed Plan 12 Bar Atrium | scale 1:25 @A1 | date 08.04.22 | |
| drawing number AHA-STG- PA -710-1 | drawn JB | checked DA / HJ | revision - |



1 Proposed Section AA
Scale: 1:25



2 Proposed Section BB
Scale: 1:25



0 0.25 0.5 0.75 1 1.25 2m

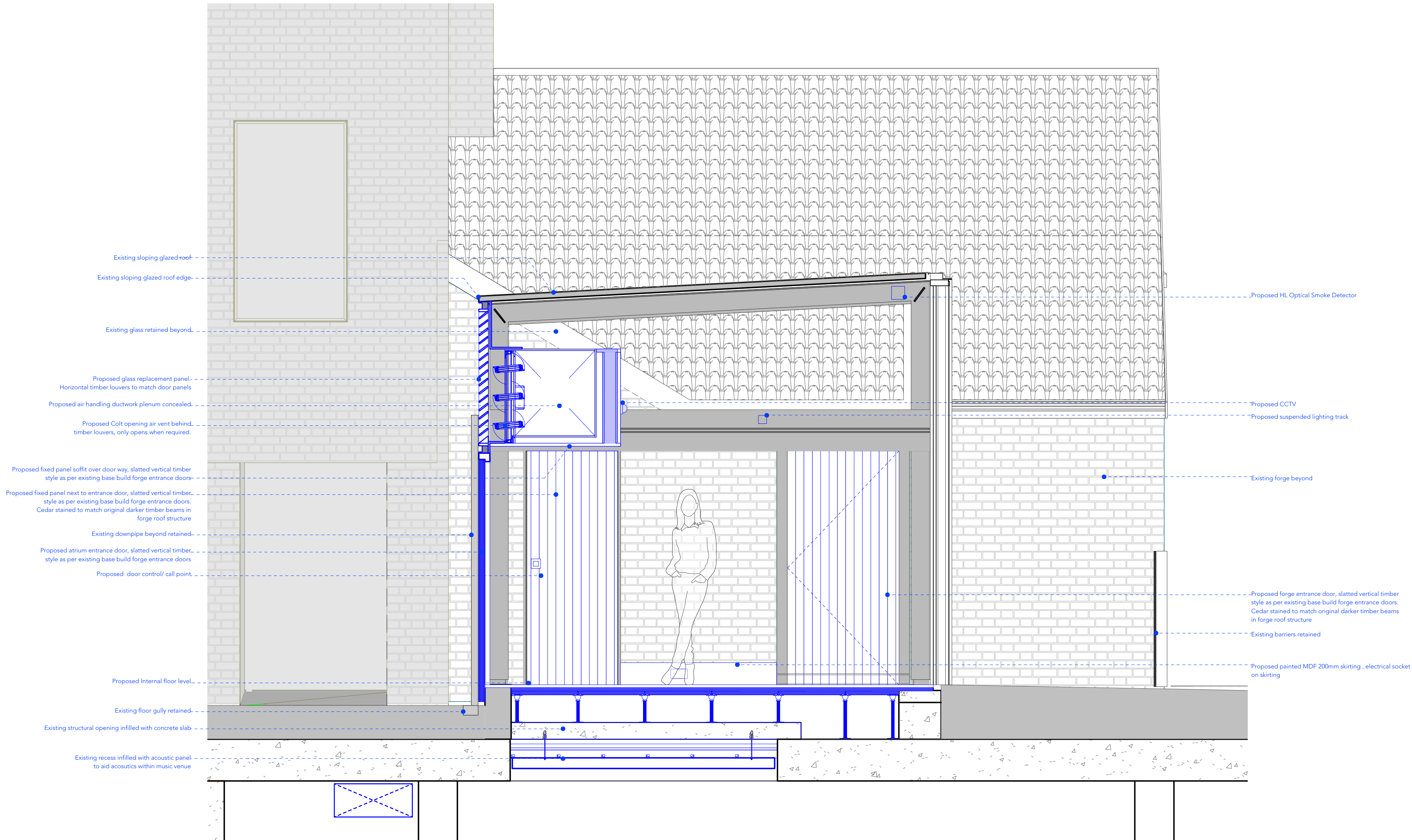
FOR PLANNING

Archer Humphries Architects

Basement
Central House
142 Central Street
London, United Kingdom
EC1V 6AR
T : +44 (0) 20 7251 8555

| | | | |
|--|-------------------|--------------------|--|
| project title ST. GILES OUTERNET | | | |
| drawing title Proposed Section AA & BB 12 Bar Atrium | scale 1:25 @A1 | date 08.04.22 | |
| | drawn JB | checked DA / HJ | |
| drawing number AHA-STG- PA -710-2 | | revision - | |

revision / date / amendments



01 Proposed Section CC
Scale: 1:25

0 0.25 0.5 0.75 1 1.25 2m

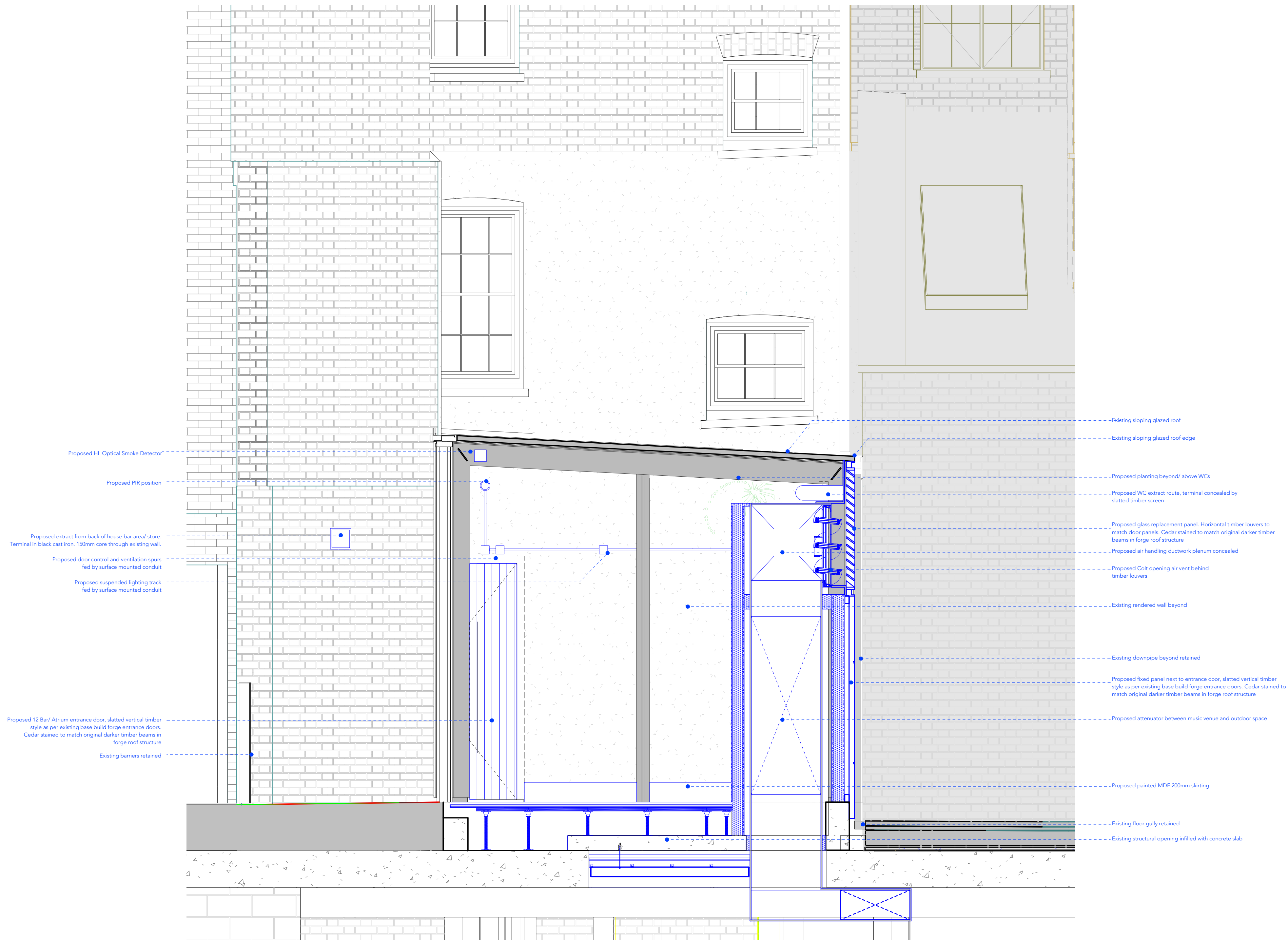
FOR PLANNING

Archer Humphryes Architects

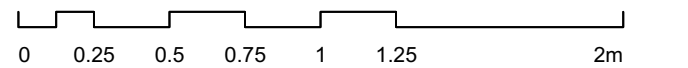
Basement
Central House
142 Central Street
London, United Kingdom
EC1V 8AR
T : +44 (0) 20 7251 8555

| | | |
|---|-------------------|------------------|
| project title ST. GILES OUTERNET | | |
| drawing title Proposed Section CC 12 Bar Atrium | scale 1:25 @A1 | date 08.04.22 |
| drawing number AHA-STG- PA -710-3 | drawn HJ | checked DA |
| | revision - | |

| revision / date / amendments |
|------------------------------|
|------------------------------|



01 Proposed Section DD
Scale: 1:25



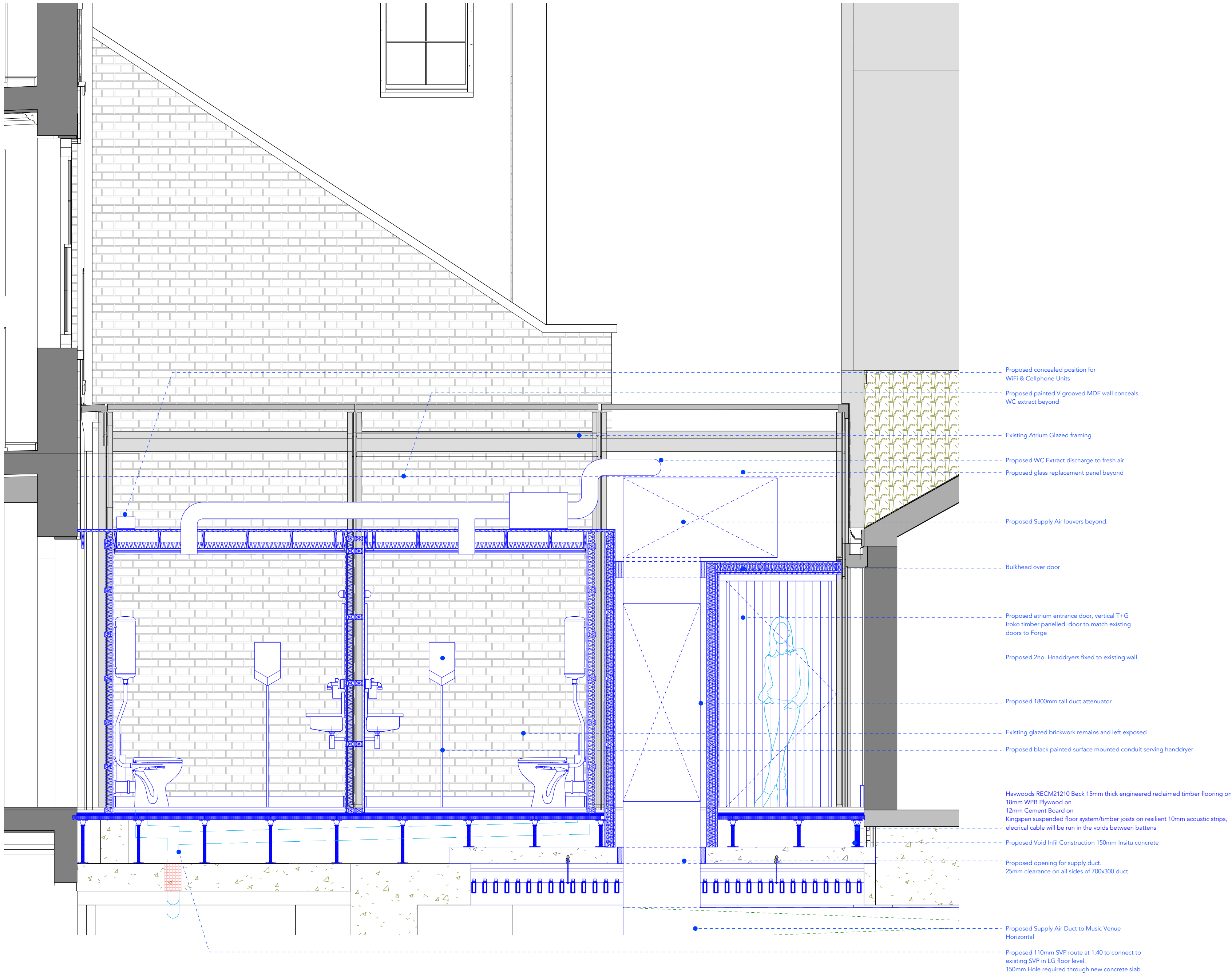
FOR PLANNING

Archer Humphryes Architects

Basement
Central House
142 Central Street
London, United Kingdom
EC1V 8AR
T : +44 (0) 20 7251 8555

| | | |
|---|-------------------|------------------|
| project title ST. GILES OUTERNET | | |
| drawing title Proposed Section DD 12 Bar Atrium | scale 1:25 @A1 | date 08.04.22 |
| drawing number AHA-STG- PA -710-4 | drawn HJ | checked DA |
| | revision | - |

| revision / date / amendments |
|------------------------------|
|------------------------------|



4 Proposed Section EE
Scale: 1:25

0 0.25 0.5 0.75 1 1.25 2m

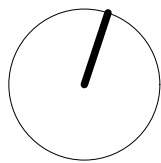
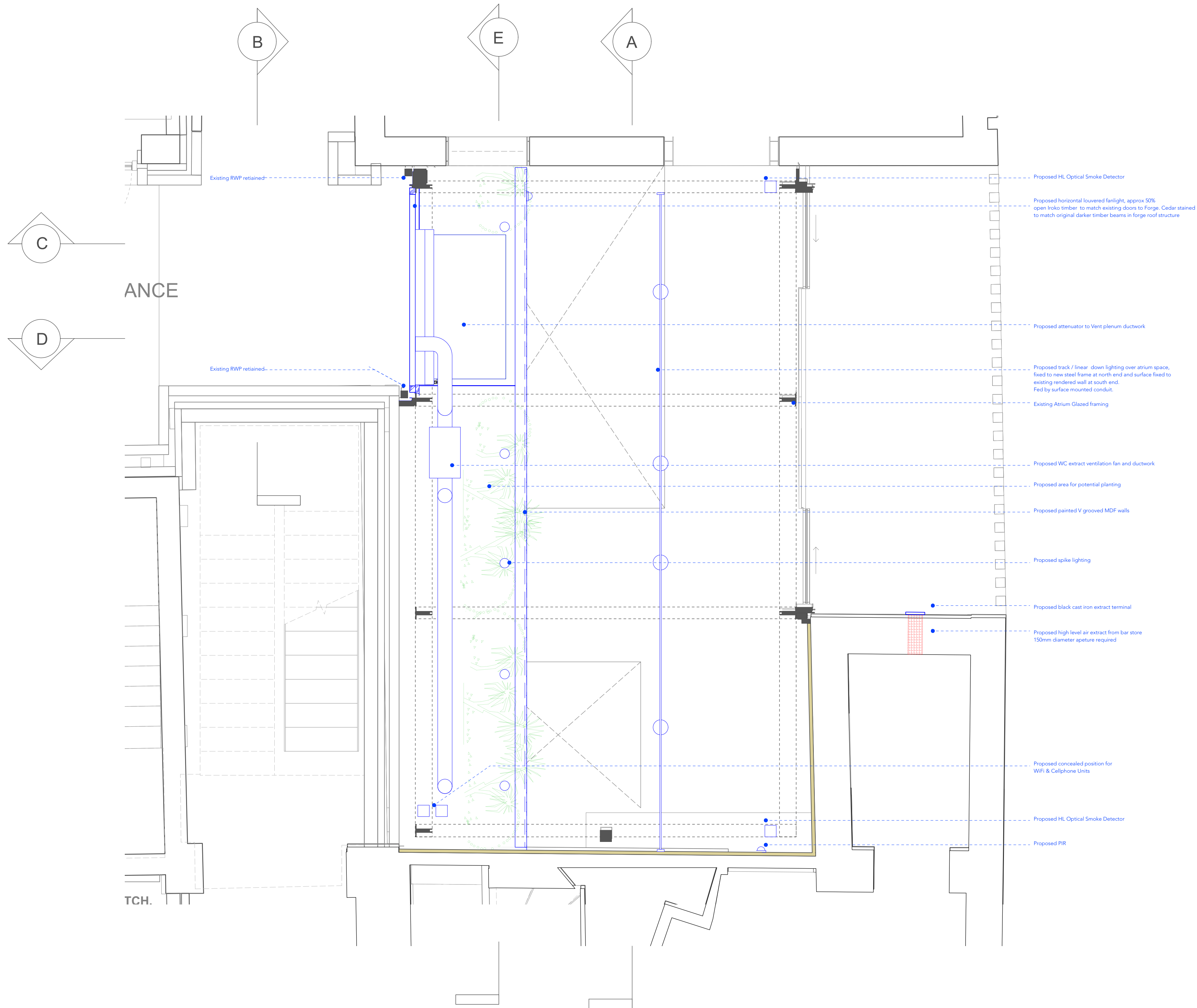
FOR PLANNING

Archer Humphryes Architects

Basement
Central House
142 Central Street
London, United Kingdom
EC1V 8AR
T : +44 (0) 20 7251 8555

| | | | |
|---|-------------------|--------------------|---|
| project title ST. GILES OUTERNET | | | |
| drawing title Proposed Section EE 12 Bar Atrium | scale 1:25 @A1 | date 08.04.22 | |
| | drawn JB | checked DA / HJ | |
| drawing number AHA-STG- PA -710-5 | | revision | - |

| revision / date / amendments |
|------------------------------|
|------------------------------|



0 0.25 0.5 0.75 1 1.25 2m

FOR PLANNING

Archer Humphries Architects

Basement
Central House
142 Central Street
London, United Kingdom
EC1V 8AR
T: +44 (0) 20 7251 8555

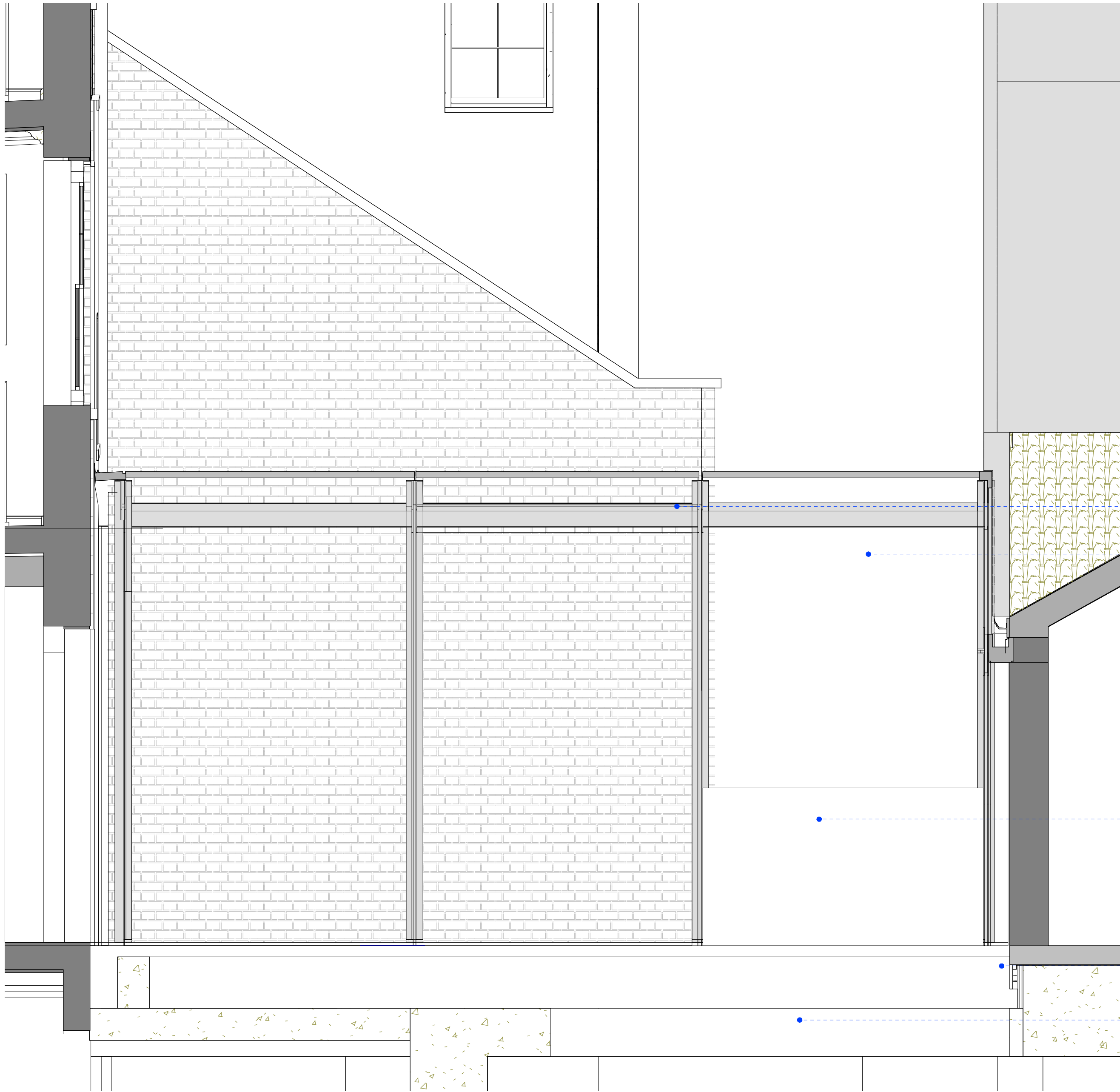
| project title | | | |
|---|----------|----------|--|
| ST. GILES OUTERNET | | | |
| drawing title | scale | date | |
| Proposed High Level Plan 12 Bar Atrium | 1:25 @A1 | 08.04.22 | |
| drawing number | revision | | |
| AHA-STG- PA -710-6 | - | | |

Copyright: All rights reserved. This drawing must not be reproduced without permission.

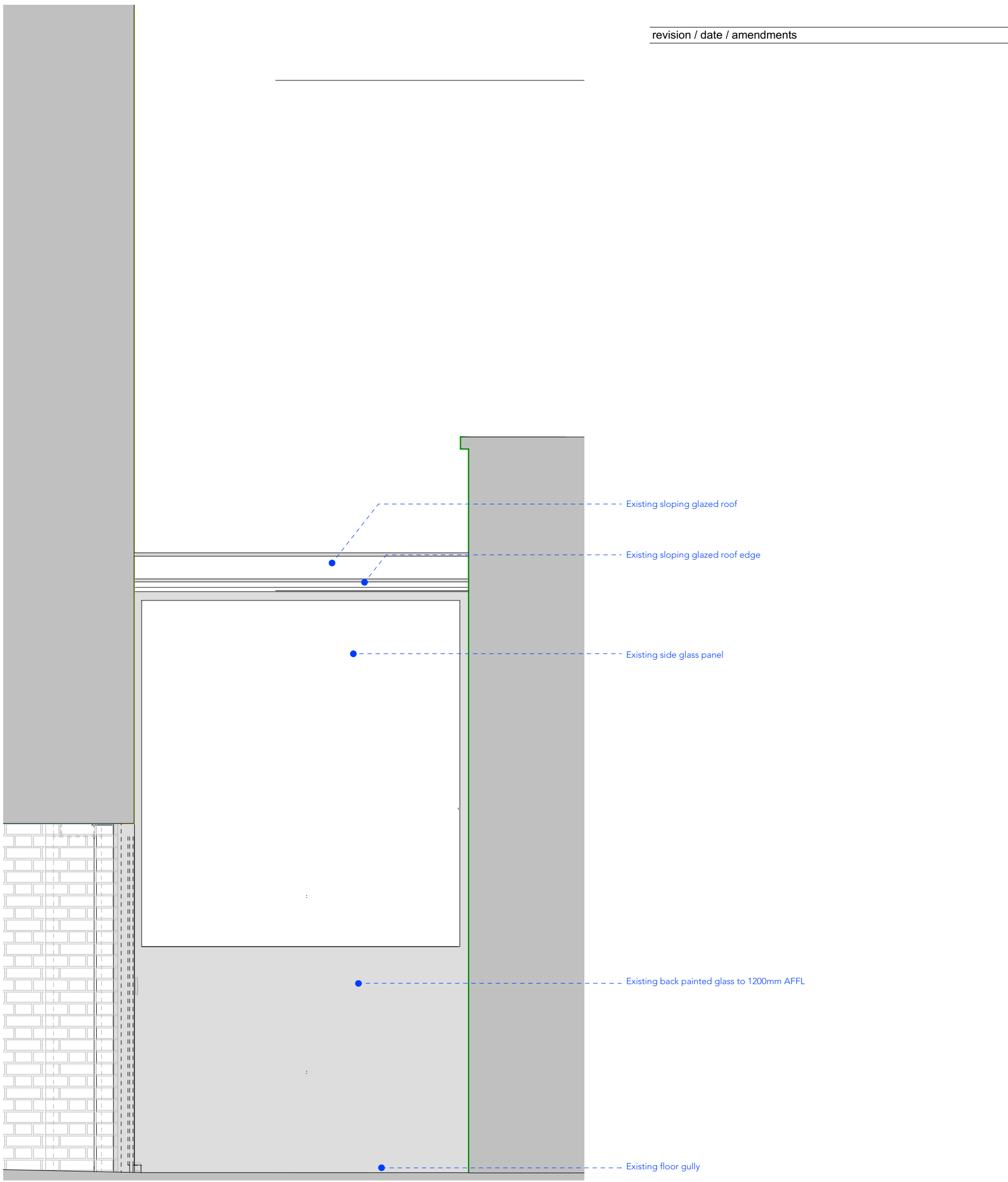
Only the original drawing should be relied upon. Contractors, subcontractors and suppliers must verify all dimensions on site before commencing any work or making any shop drawings.

All shop drawings to be submitted to the architect for comment prior to fabrication.

This drawing is to be read in conjunction with the Architect's specification, bills of quantities / schedules, structural, mechanical & electrical drawings and all discrepancies are to be reported to the architect.



4 Existing Section AA
Scale: 1:25



4 Existing Section BB
Scale: 1:25

0 0.25 0.5 0.75 1 1.25 2m

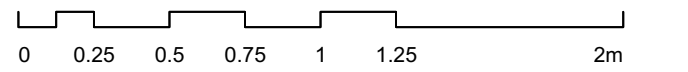
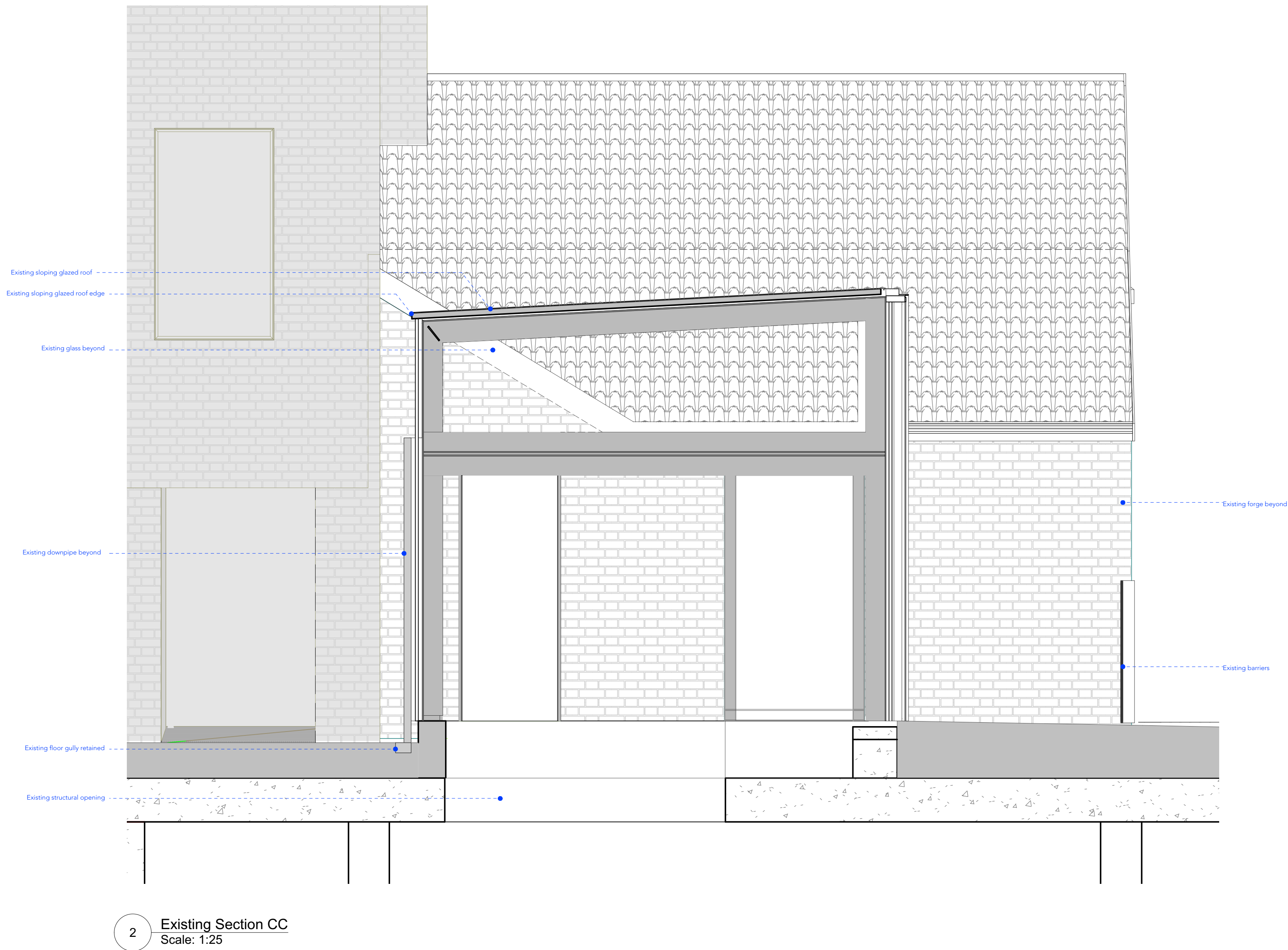
FOR PLANNING

Archer Humphries Architects

Basement
Central House
142 Central Street
London, United Kingdom
EC1V 8AR
T : +44 (0) 20 7251 8555

| | | | |
|--|-------------------|--------------------|---------------|
| project title ST. GILES OUTERNET | | | |
| drawing title Existing Section AA & BB 12 Bar Atrium | scale 1:25 @A1 | date 08.04.22 | |
| drawing number AHA-STG- PA -710-12 | drawn JB | checked DA / HJ | revision - |

revision / date / amendments



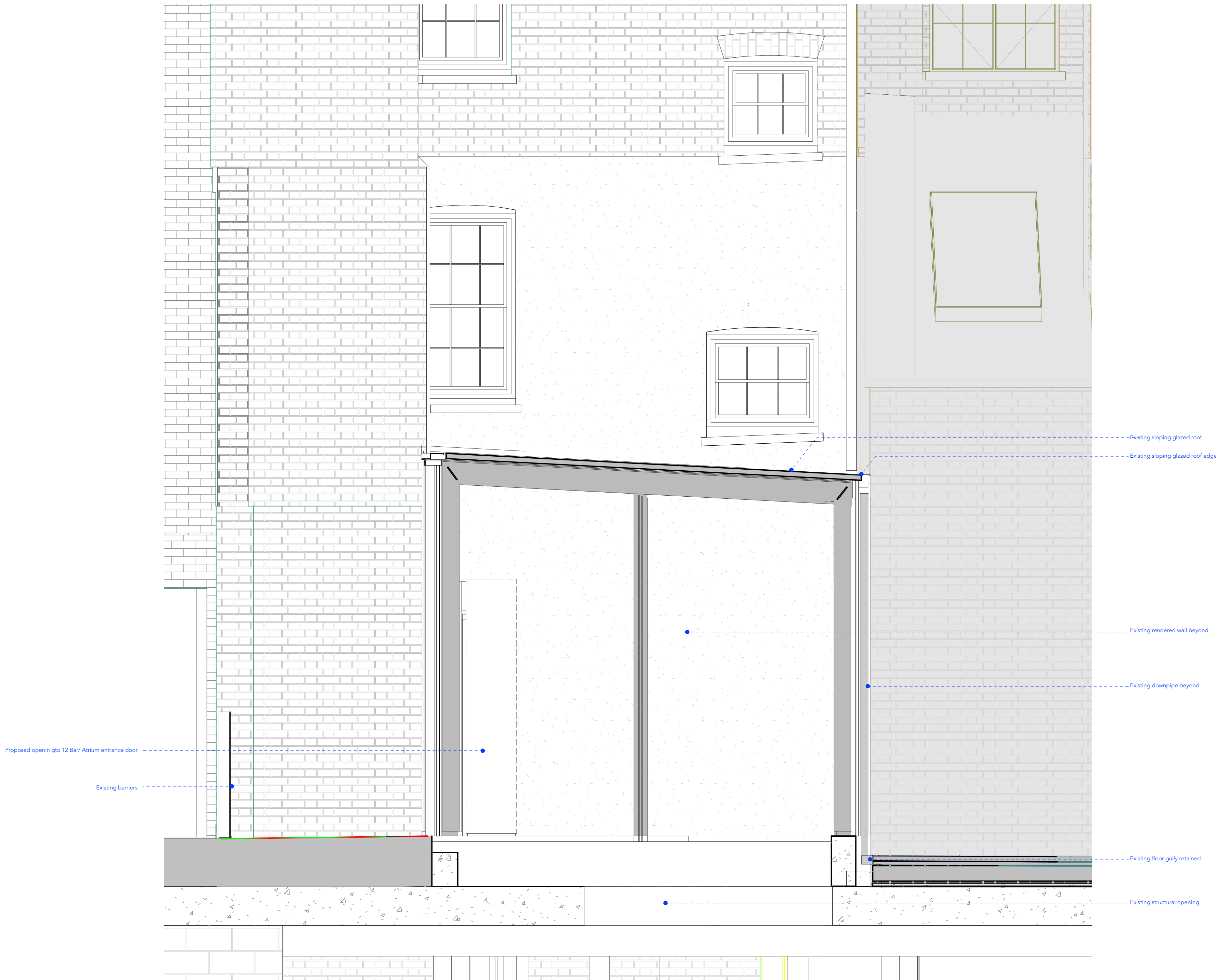
FOR PLANNING

Archer Humphryes Architects

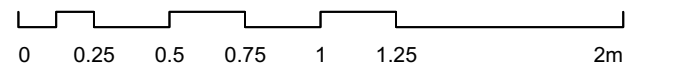
Basement
Central House
142 Central Street
London, United Kingdom
EC1V 8AR
T : +44 (0) 20 7251 8555

| | | |
|---------------------|----------|------------|
| project title | | |
| ST. GILES OUTERNET | | |
| drawing title | scale | date |
| Existing Section CC | 1:25 @A1 | 08.04.22 |
| 12 Bar Atrium | drawn HJ | checked DA |
| drawing number | revision | |
| AHA-STG- PA -710-13 | | |

| revision / date / amendments |
|------------------------------|
|------------------------------|



1 Existing Section DD
Scale: 1:25



FOR PLANNING

Archer Humphryes Architects

Basement
Central House
142 Central Street
London, United Kingdom
EC1V 8AR
T : +44 (0) 20 7251 8555

| | | |
|---|-------------------|------------------|
| project title ST. GILES OUTERNET | | |
| drawing title Existing Section DD 12 Bar Atrium | scale 1:25 @A1 | date 08.04.22 |
| drawing number AHA-STG- PA -710-14 | drawn HJ | checked DA |
| | revision | |