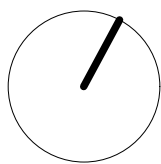
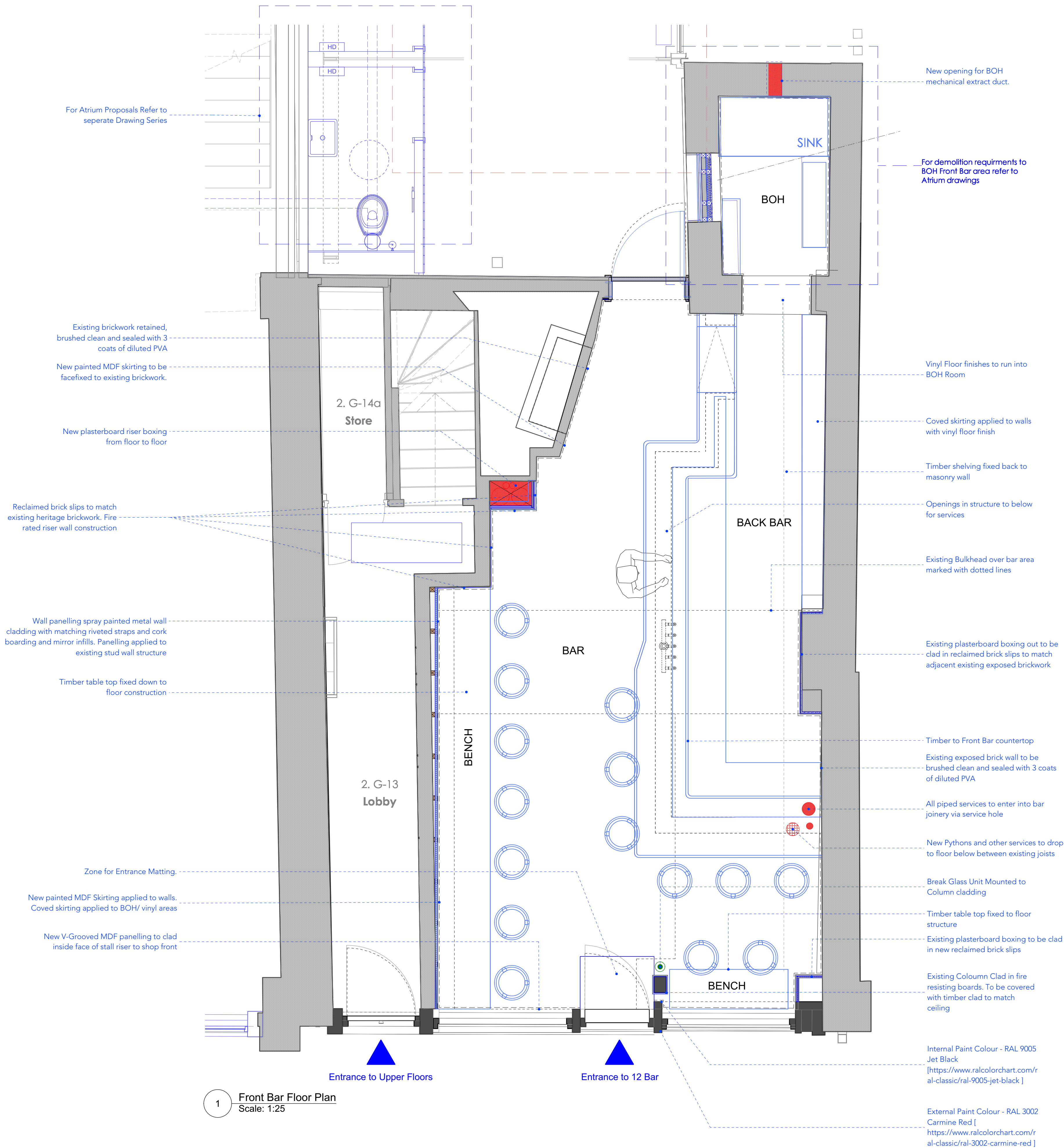


revision / date / amendments



0 0.25 0.5 0.75 1 1.25 2m

## PLANNING

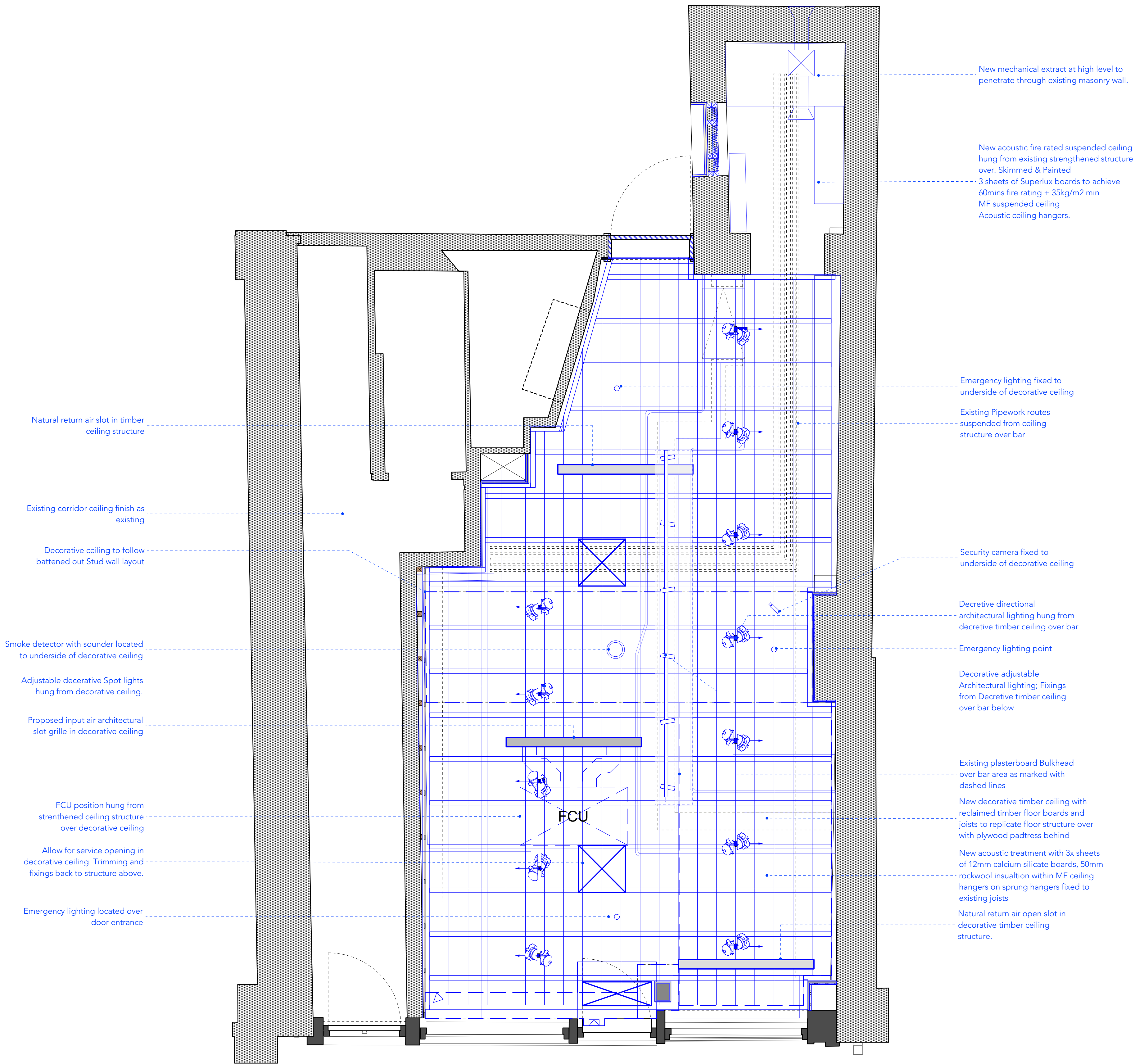
Archer Humphryes Architects

Basement  
Central House  
142 Central Street  
London, United Kingdom  
EC1V 8AR  
T: +44 (0) 20 7251 8555

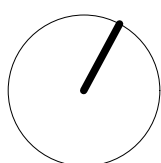
project title  
ST. GILES OUTERNET

drawing title	scale	date
12Bar Front Bar Plan	1:25 @ A1	14.04.22
drawing number	drawn	checked
AHA-STG-PA-701-7	PC	DA/HJ
	revision	
	-	

revision / date / amendments



- Ceiling mounted adjustable light
- Track mounted adjustable light
- Indicative access panel in decorative ceiling
- Magnetic Door access
- Emergency Lighting
- Surface mounted Speaker
- Motion detector



0 0.25 0.5 0.75 1 1.25 2m

## PLANNING

Archer Humphryes Architects

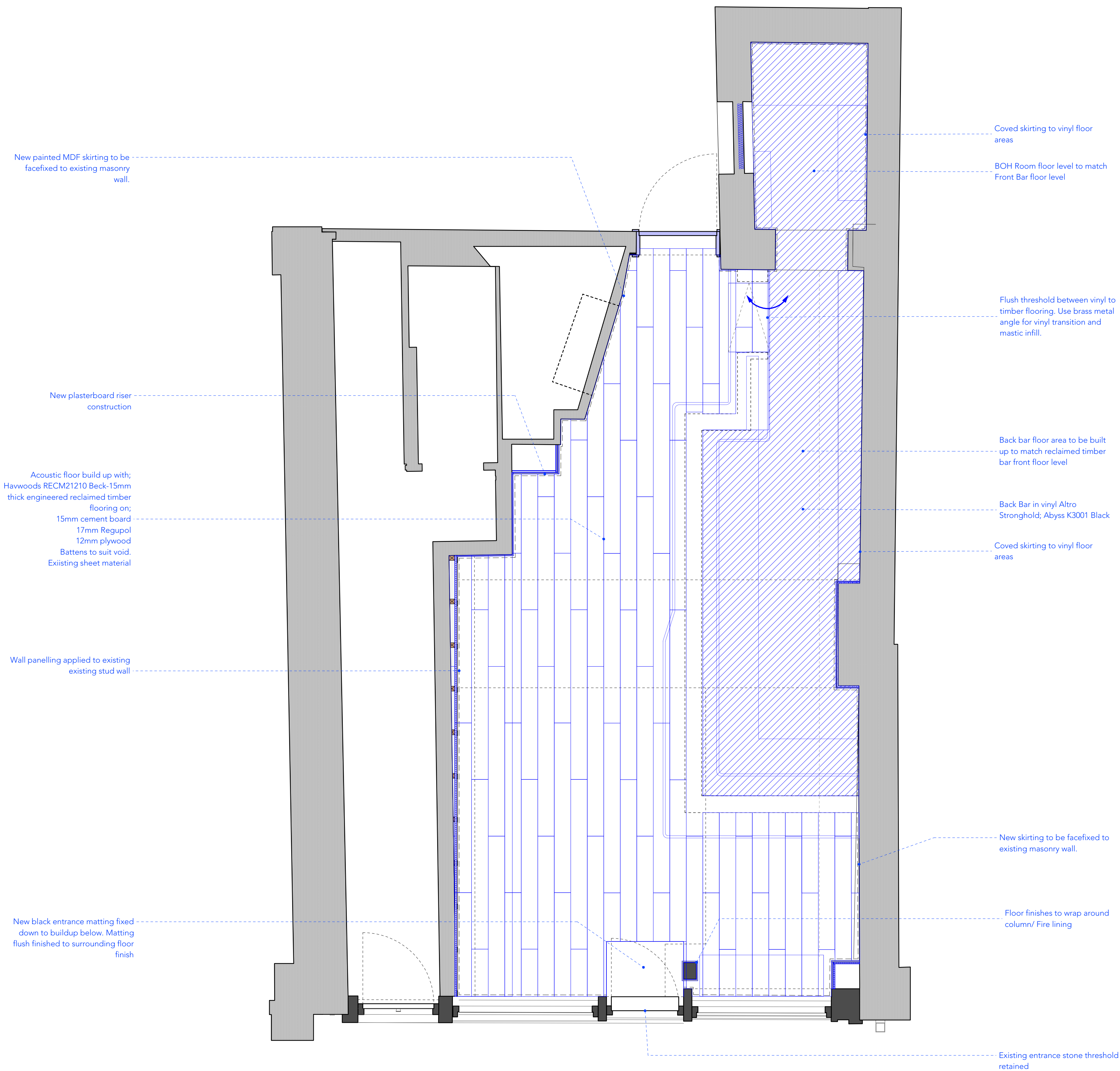
Basement  
Central House  
142 Central Street  
London, United Kingdom  
EC1V 8AR  
T: +44 (0) 20 7251 8555

project title			
ST. GILES OUTERNET			
drawing title	scale	date	
12Bar Front Bar RCP	1:25 @ A1	14.04.22	
drawing number	drawn	checked	PC
AHA-STG-PA-701-8			DA/HJ
	revision		

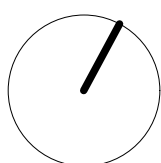
1 Front Bar RCP  
Scale: 1:25



revision / date / amendments



1 Front Bar Floor Finishes Pan  
Scale: 1:25



0 0.25 0.5 0.75 1 1.25 2m

## PLANNING

Archer Humphryes Architects

Basement  
Central House  
142 Central Street  
London, United Kingdom  
EC1V 8AR  
T: +44 (0) 20 7251 8555

project title ST. GILES OUTERNET			
drawing title 12Bar Front Bar Floor Finishes Pan	scale 1:25 @ A1	date 14.01.22	
drawing number AHA-STG- PA -701-9	drawn PC	checked DA / HJ	revision -

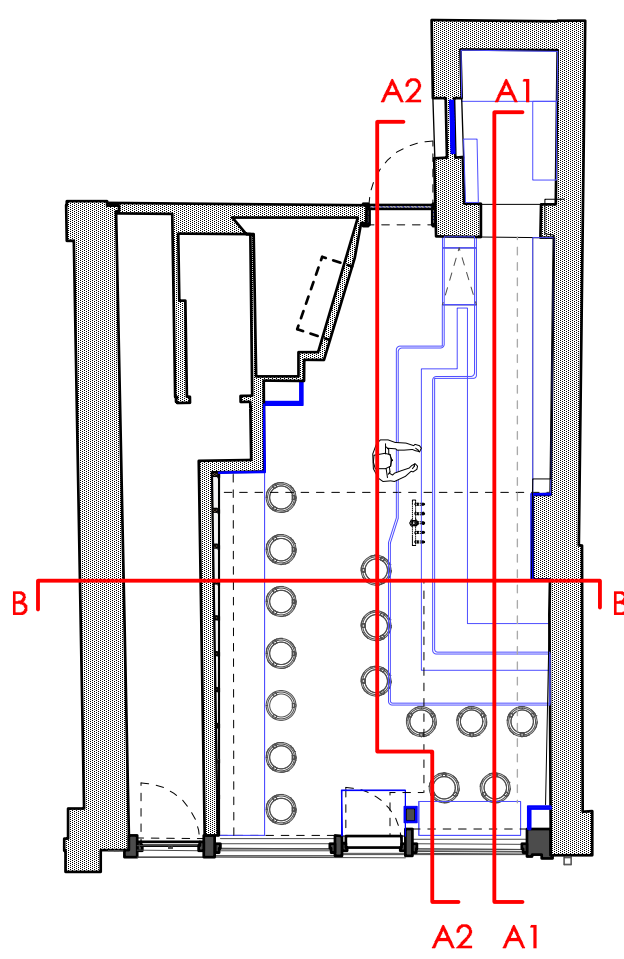
Copyright: All rights reserved. This drawing must not be reproduced without permission.

Only the original drawing should be relied upon. Contractors, subcontractors and suppliers must verify all dimensions on site before commencing any work or making any shop drawings.

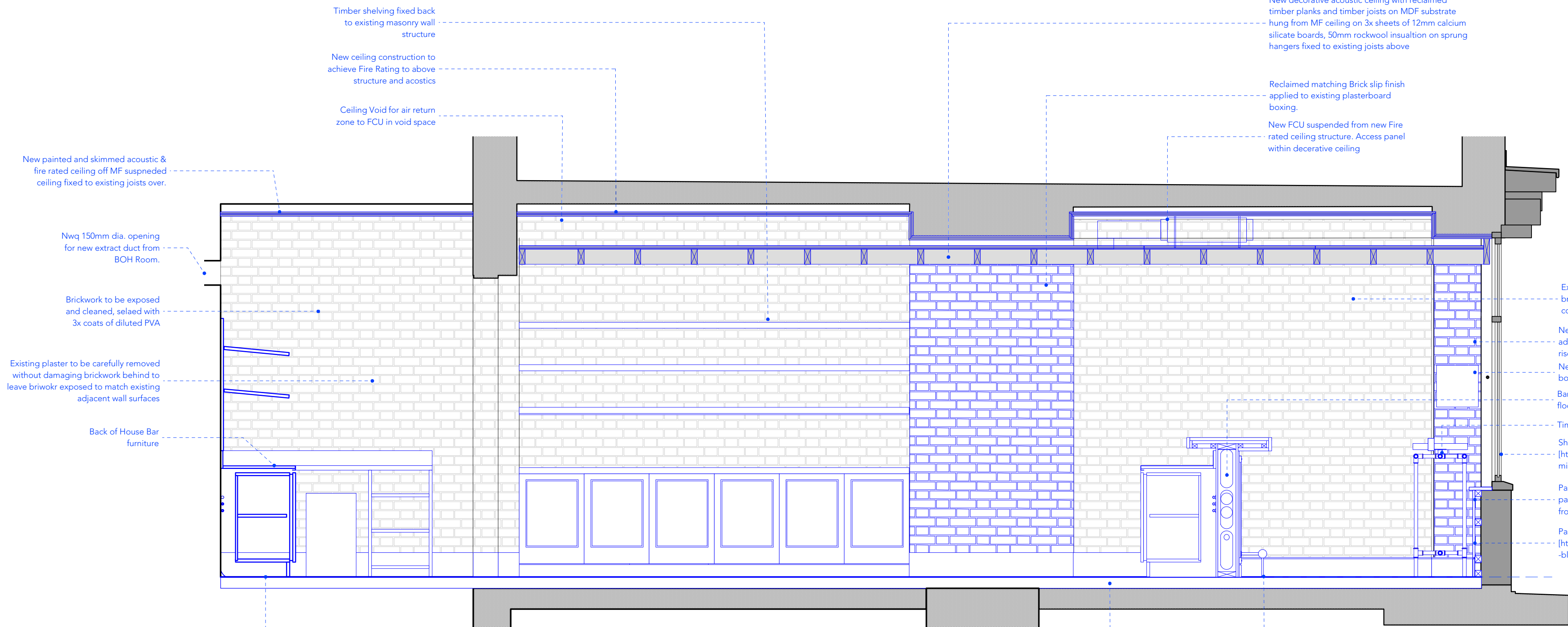
All shop drawings to be submitted to the architect for comment prior to fabrication.

This drawing is to be read in conjunction with the Architect's specification, bills of quantities / schedules, structural, mechanical & electrical drawings and all discrepancies are to be reported to the architect.

revision / date / amendments



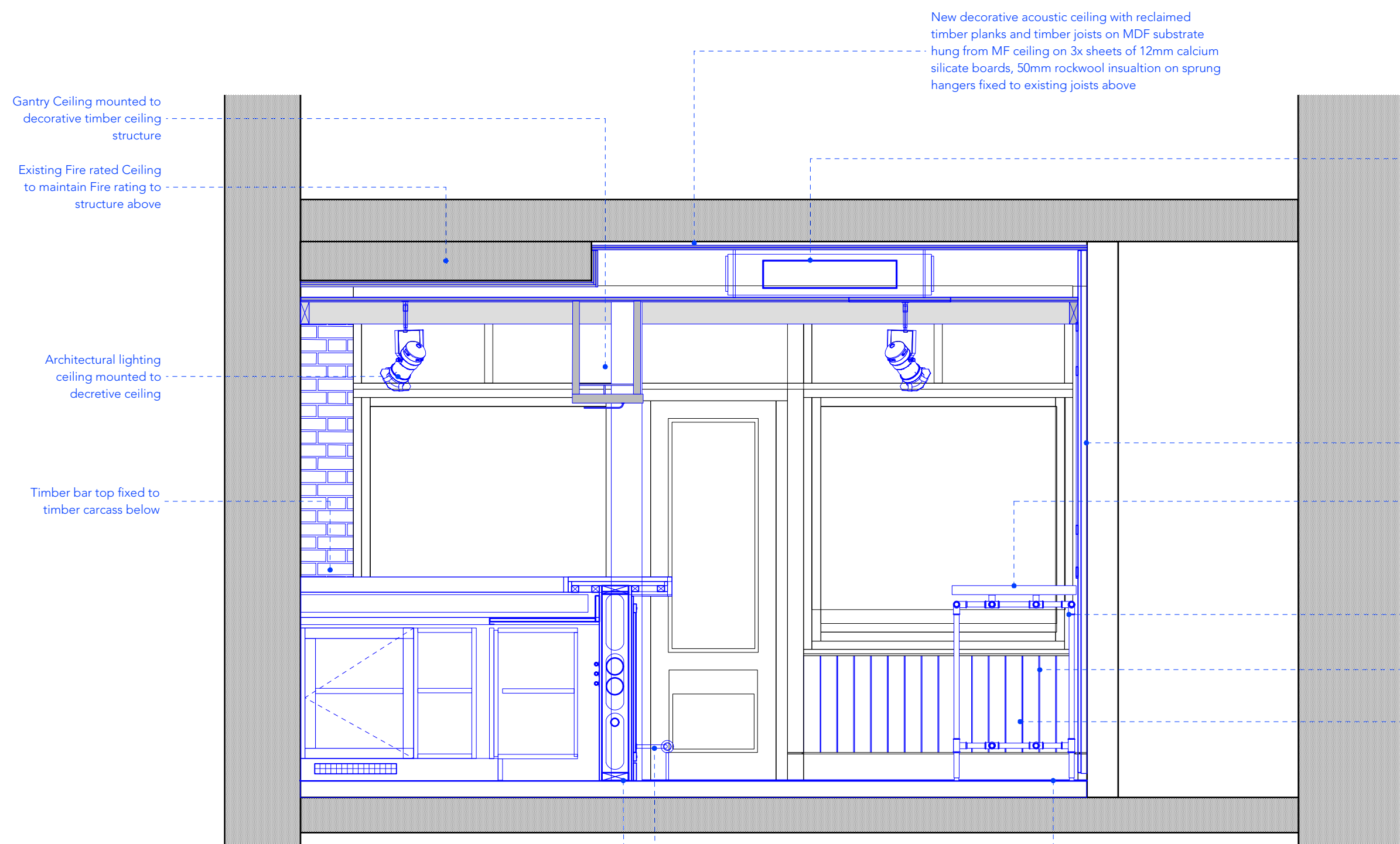
1 Plan  
Scale: 1:100



2 Front Bar Section A1  
Scale: 1:25

Exposed brickwork to be brushed & sealed with 3x coats of diluted PVA  
New reclaimed brickslips adhered to plasterboard riser boxing.  
New fire alarm panel recessed into plasterboard boxing out  
Bar structure fixed down to floor structure below.  
Timber table top  
Shop front to be painted RAL 3002 Carmine Red [https://www.ralcolorchart.com/ral-classic/ral-3002-car-mine-red]  
Panelling painted with 'V' grooves MDF timber panelling clas to inside face of stall riser to shop front  
Panelling painted Jet Black Matt emulsion Ral 9005 [https://www.ralcolorchart.com/ral-classic/ral-9005-jet-black]

Steel kick rail fixed to bar and floor structure  
Acoustic floor build up with; Hawoods RECM21210 Beck-15mm thick engineered reclaimed timber flooring on; 15mm screed board  
17mm Regupol  
12mm plywood  
Battens to suit void.  
Existing sheet material



3 Front Bar Section BB  
Scale: 1:25

New decorative acoustic ceiling with reclaimed timber planks and timber joists on MDF substrate hung from MF ceiling on 3x sheets of 12mm calcium silicate boards, 50mm rockwool insulation on sprung hangers fixed to existing joists above

FCU fixed to timber structure above

Ceiling Void for for services and FCU equipment

New timber shelving fixed back to existing masonry wall construction

Decorative adjustable lighting fixed to decorative structure above

Timber bar top

Existing full height stud wall with panelling

Timber table top fixed down to floor structure

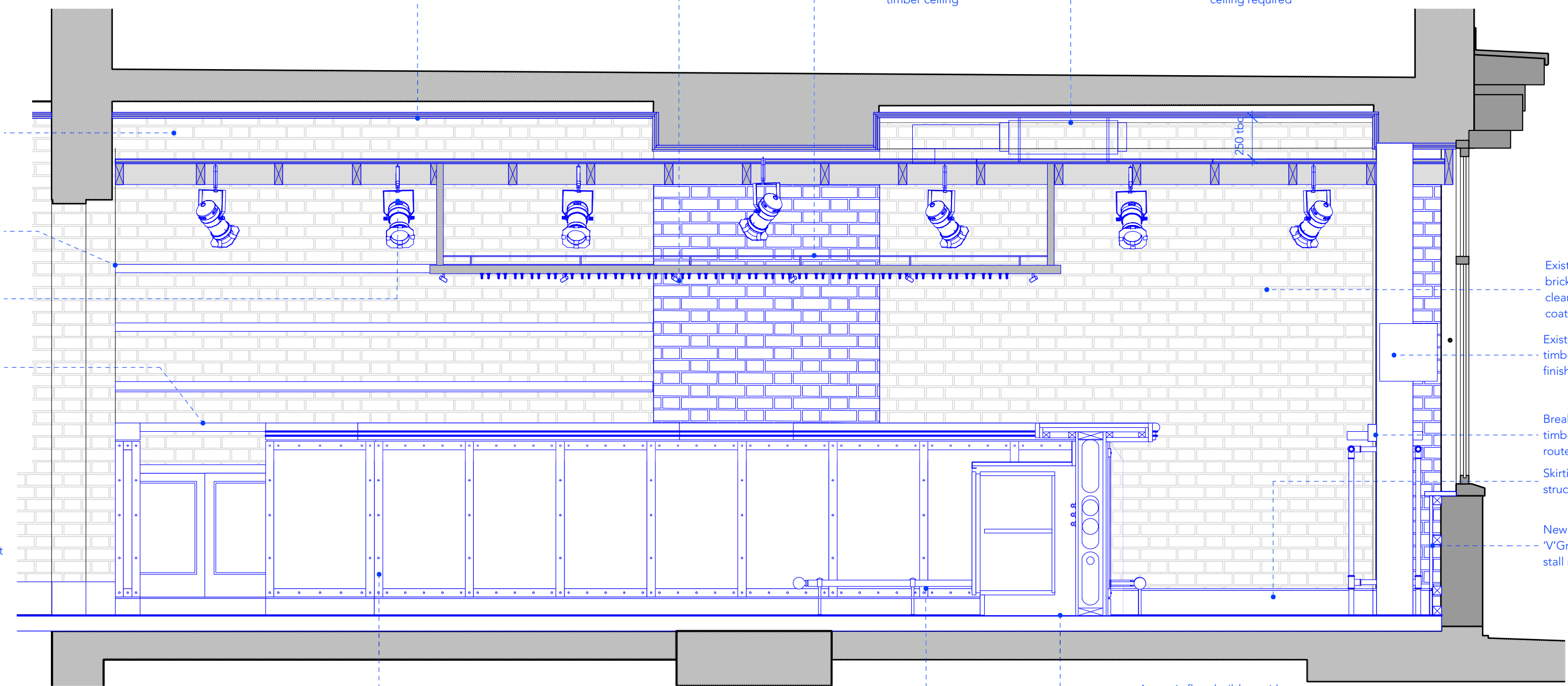
Metal Pipe legs fixed down to floor structure

Panelling painted Jet Black Matt emulsion Ral 9005 [https://www.ralcolorchart.com/ral-classic/ral-9005-jet-black]

New wall panelling with 'V' Grooved in MDF to cover existing Store front stall riser

Acoustic floor build up with; Aged oak to floor boards Hawoods RECM21210 Beck-15mm thick engineered reclaimed timber flooring on; 15mm screed board  
17mm Regupol  
12mm plywood  
Battens to suit void.  
Existing sheet material

Steel kick rail fixed to floor structure  
Timber Bar Carcass structure fixed down to timber floor structure below.



4 Front Bar Section A2  
Scale: 1:25

Decorative lighting channel fixed to underside of decorative glass gantry structure

Timber Glass rack gantry suspended from decorative timber ceiling

New FCU fixed to ceiling structure over. Access panels in decorative ceiling required

Existing exposed brickwork. Brickwork cleaned & sealed with 2x coats of PVA.

Existing column clad in timber to match ceiling finish

Break Glass point fixed to timber cladding. Electrical route within boxing

Skirting fixed to existing masonry wall structure

New timber MDF panelling with 'V' Grooves to clad inside face of stall riser to shop front

Acoustic floor build up with; Aged oak to floor Hawoods RECM21210 Beck-15mm thick engineered reclaimed timber flooring on; 15mm screed board  
17mm Regupol  
12mm plywood  
Battens to suit void.  
Existing sheet material

Steel footrail fixed down to floor structure below

0 0.25 0.5 0.75 1 1.25 2m

## PLANNING

Archer Humphryes Architects

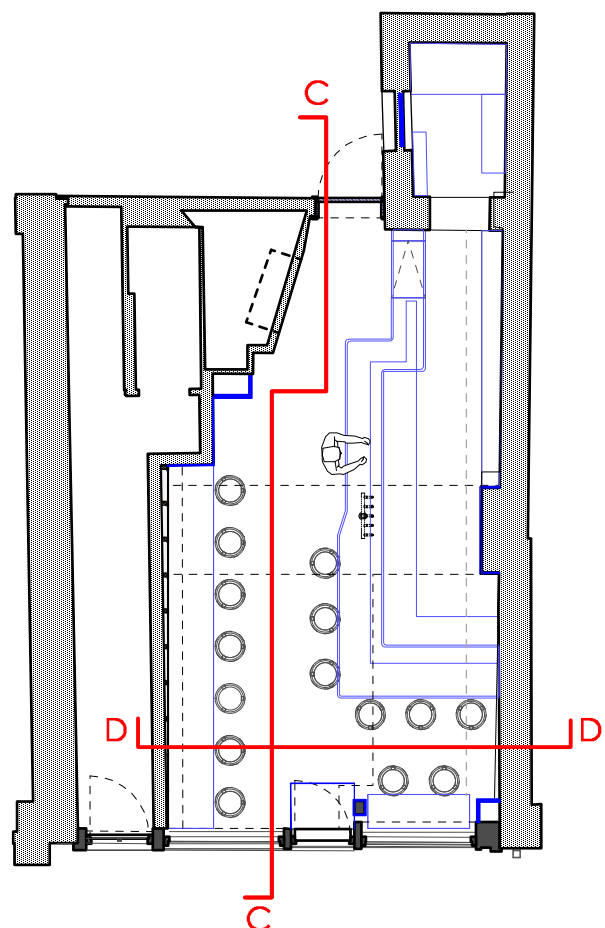
Basement  
Central House  
142 Central Street  
London, United Kingdom  
EC1V 8AR  
T: +44 (0) 20 7251 8555

project title  
ST. GILES OUTERNET

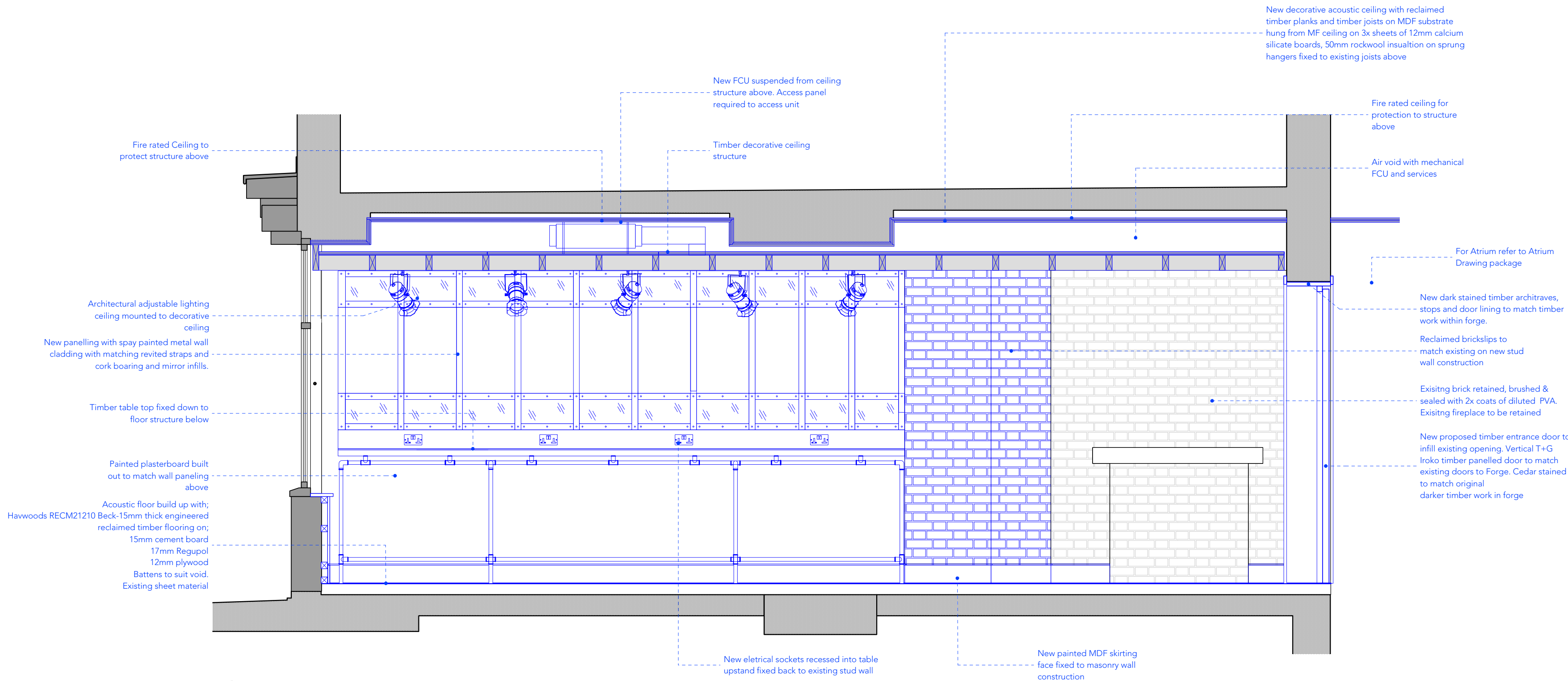
drawing title	scale	date
12bar Front Bar Elevation AA & BB	1:25 @ A1	14.04.22
drawing number	drawn	checked
AVA-STG-PA-701-10	PC	DA/HJ
	revision	
	-	



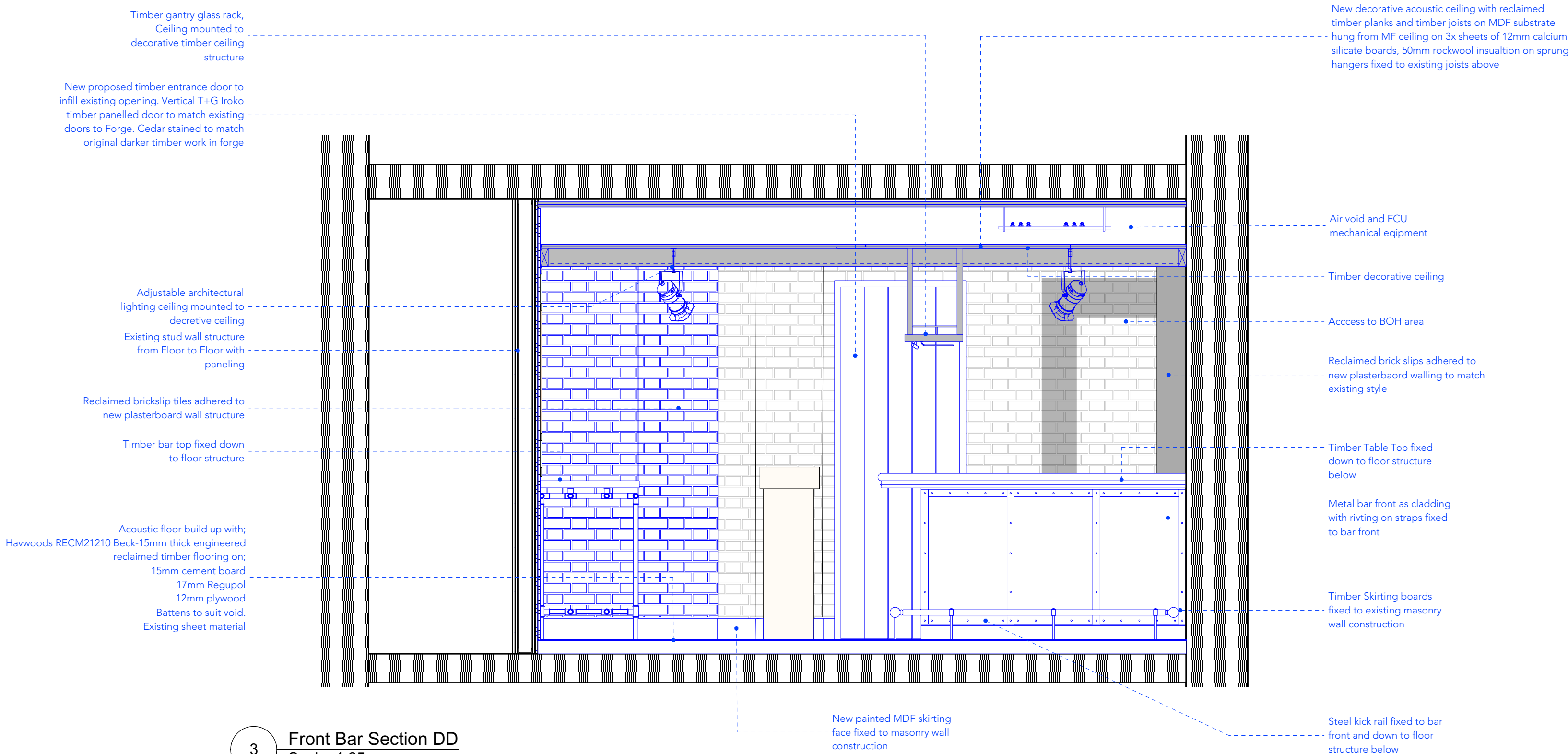
revision / date / amendments



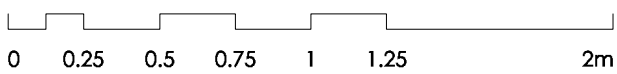
1 Plan  
Scale: 1:100



2 Front Bar Section CC  
Scale: 1:25



3 Front Bar Section DD  
Scale: 1:25



## PLANNING

Archer Humphryes Architects

Basement  
Central House  
142 Central Street  
London, United Kingdom  
EC1V 8AR  
T: +44 (0) 20 7251 8555

project title  
ST. GILES OUTERNET

drawing title	scale	date
12Bar Front Bar Elevation CC & DD	1:25 @ A1	14.04.22
drawing number	drawn	checked
AVA-STG- PA -701-11	PC	DA / HJ
	revision	
	-	