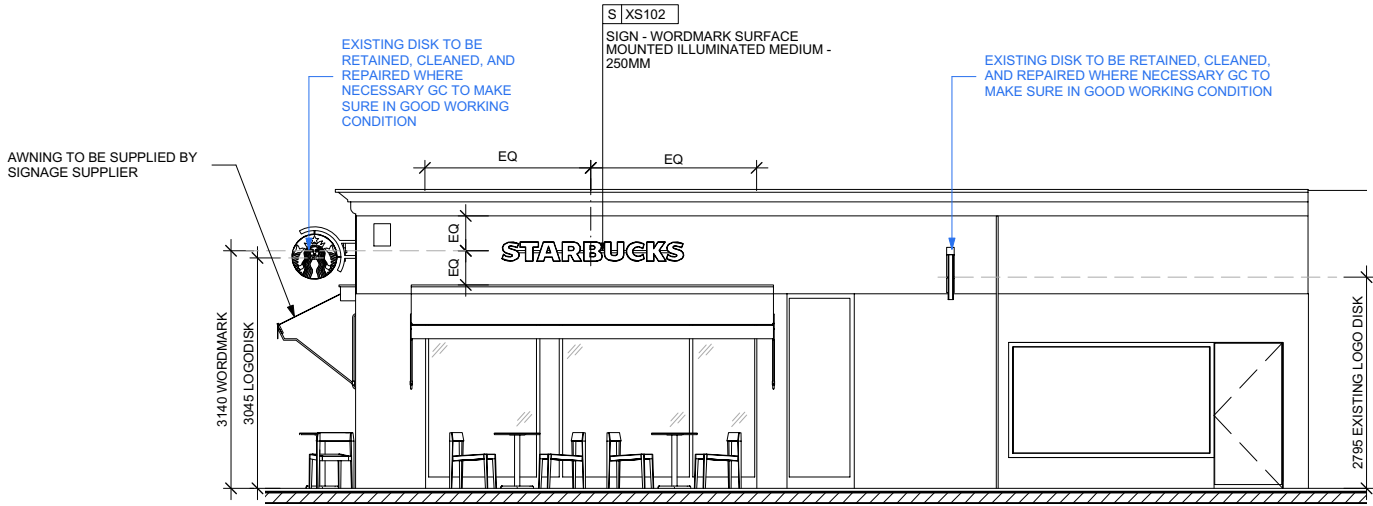


S SIGNAGE FIXTURE SCHEDULE

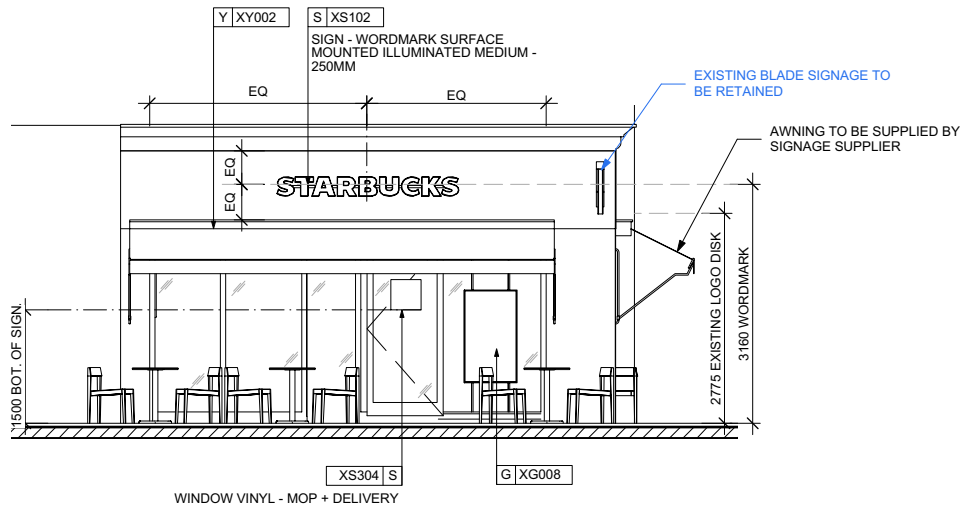
DESIGN ID	COUNT	DESCRIPTION	RESP	COMMENTS
XS102	2	SIGN - WORDMARK SURFACE MOUNTED ILLUMINATED MEDIUM - 250MM	SS	
XS304	1	WINDOW VINYL - MOP + DELIVERY	SS	
XS305	1	BLADE ILLUMINATED - RIGHT - MOP + DELIVERY	SS	SINGLE SIDED SIGN

Y SITE SCHEDULE

DESIGN ID	COUNT	DESCRIPTION	RESP	COMMENTS
XY001	1	CUSTOM AWNING - SHOPFRONT	CM	
XY002	1	CUSTOM AWNING - SECONDARY ELEVATION	CM	



1 SHOPFRONT ELEVATION
1:100



2 SHOPFRONT ELEVATION - LHS
1:100

EXTERIOR ELEVATION NOTES

- GENERAL CONTRACTOR TO COORDINATE AND SCHEDULE SIGNAGE INSTALLATION WITH THE SIGNAGE CONTRACTOR
- GENERAL CONTRACTOR SHALL COORDINATE WITH ELECTRICAL CONTRACTOR TO FURNISH AND INSTALL ELECTRICAL CIRCUITS INCLUDING ALL CONDUIT, CABLING, CONNECTIONS, AND BREAKER AT PANEL BOARD NECESSARY TO SERVE SIGNAGE
- UNLESS OTHERWISE STATED, GENERAL CONTRACTOR WILL SUPPLY AND INSTALL ALL SIGNAGE SUPPORT FRAMES, BACKING PANELS, STUDWORK, ETC. IN LINE WITH SIGNAGE CONTRACTOR'S DRAWINGS
- ON REQUEST, SIGNAGE CONTRACTOR WILL SUPPLY SHOP DRAWINGS PRIOR TO FABRICATION TO STARBUCKS CONSTRUCTION MANAGER/PROJECT MANAGER
- SIGNAGE CONTRACTOR TO INSTALL SIGNAGE IN COMPLIANCE WITH APPROVED PROJECT DRAWINGS AND/OR LOCAL APPLICABLE REGULATIONS
- GENERAL CONTRACTOR TO NOTIFY CM/PM IMMEDIATELY IF SHOP DRAWINGS OR INSTALLATION IS IN DISCREPANCY WITH STARBUCKS ARCHITECTURAL DRAWINGS
- GENERAL CONTRACTOR TO CLEAN, PATCH AND REPAIR EXISTING EXTERIOR AS REQUIRED

GENERAL NOTES

- PROVIDE 75MM HIGH BLACK ACRYLIC STORE ADDRESS ON GLAZING OR PER LOCAL JURISDICTIONAL CODE REQUIREMENTS
- CM TO CONFIRM ALL DIMENSIONS ON SITE AND ADVISE STARBUCKS OF ANY CHANGES



Starbucks Coffee Company

Building 4, Chiswick Park
566 Chiswick High Road
London, W4 5YE

These Drawings and Specifications are confidential and shall remain the sole property of Starbucks Corporation, which is the owner of the copyright in this work. They shall not be reproduced (in whole or in part), shared with third parties or used in any manner on other projects or extensions to this project without the prior written consent of Starbucks Corporation. These drawings and specifications are intended to express Design Intent for a prototypical Starbucks store (which is subject to change at anytime) and do not reflect actual site conditions. Neither party shall have any obligation nor liability to the other (except as stated above) until a written agreement is fully executed by both parties.

Architect of Record

Evolve Architecture
Unit 1-02 The Hive
6 Beaufighter Road
Weston Super Mare
North Somerset
BS24 8EE



Revision Schedule

Rev	Date	By	Description

Project Name:
TOTTENHAM COURT ROAD
Project Address:
UK
London
77 Tottenham Court Rd, London, W1T 2HQ, UK

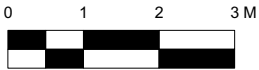
Store #: 000000
Project #: 21514-003
Concept:
Palette:
Issue Date: 04/05/2022
Design Manager: CHRISTOPHER COOK
Project Designer: TOM HOBBS
Production Designer: MJ (EVOLVE)
Checked by: RM (EVOLVE)

Sheet Title:
Exterior Elevations
Scale: As indicated
Sheet Number:
A-2001

RESPONSIBILITY LEGEND

UNLESS OTHERWISE AGREED, ALL ITEMS SUPPLIED ACCORDING TO PARTY LISTED IN "RESPONSIBILITY" COLUMN

GC	GENERAL CONTRACTOR
CS	CASEWORK SUPPLIER
CM	CONSTRUCTION MANAGER
LL	LANDLORD
SB	STARBUCKS
WH	STARBUCKS WAREHOUSE (3PL)
VD	STARBUCKS VENDOR DIRECT
LC	LICENSEE



1:100