

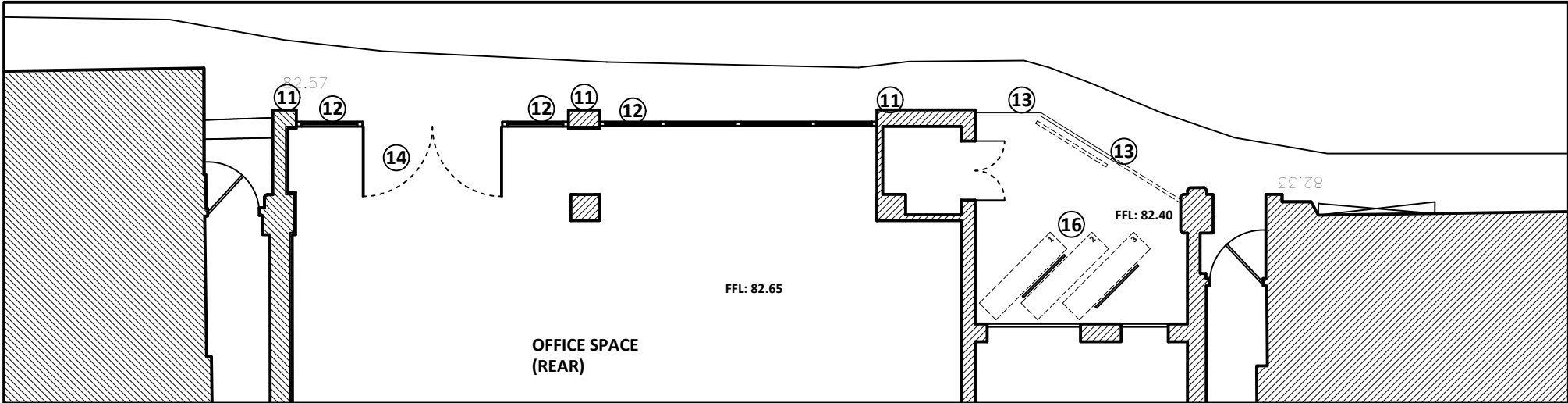
notes

do not scale from drawing; use figured dimensions only; all dimensions to be checked on site prior to construction; this drawing is to be read in conjunction with other professionals drawings; this drawing is to be read for architectural content only; all discrepancies to be reported to burogloo ltd; this drawing remains the corporate property of burogloo ltd at all times; no copies to be made without express permission;



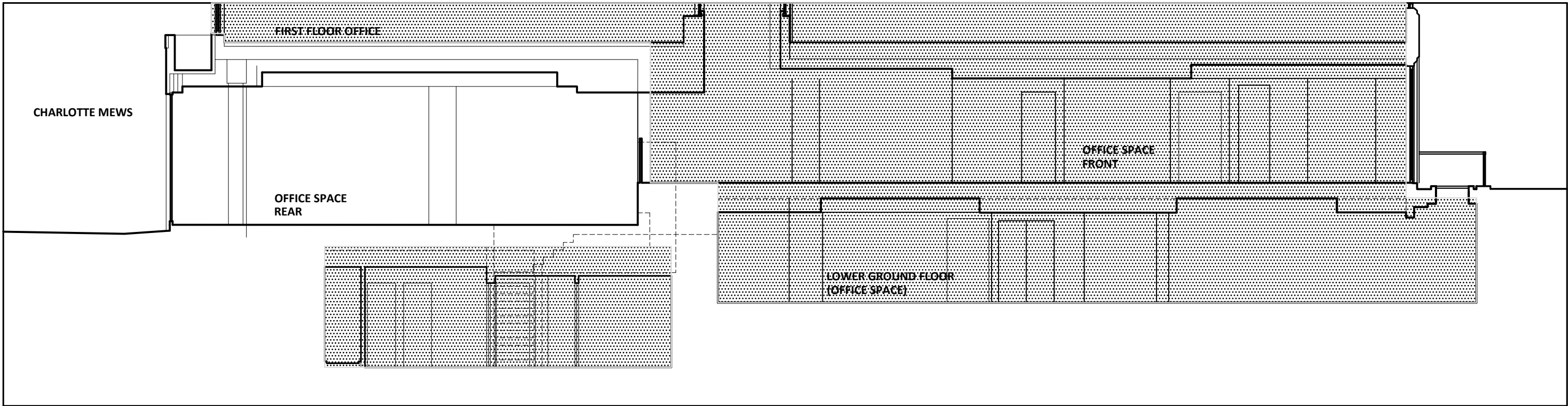
REAR ELEVATION
[TO CHARLOTTE MEWS]
AS PROPOSED

13 13 11 12 12 12 11 14 14 12 15

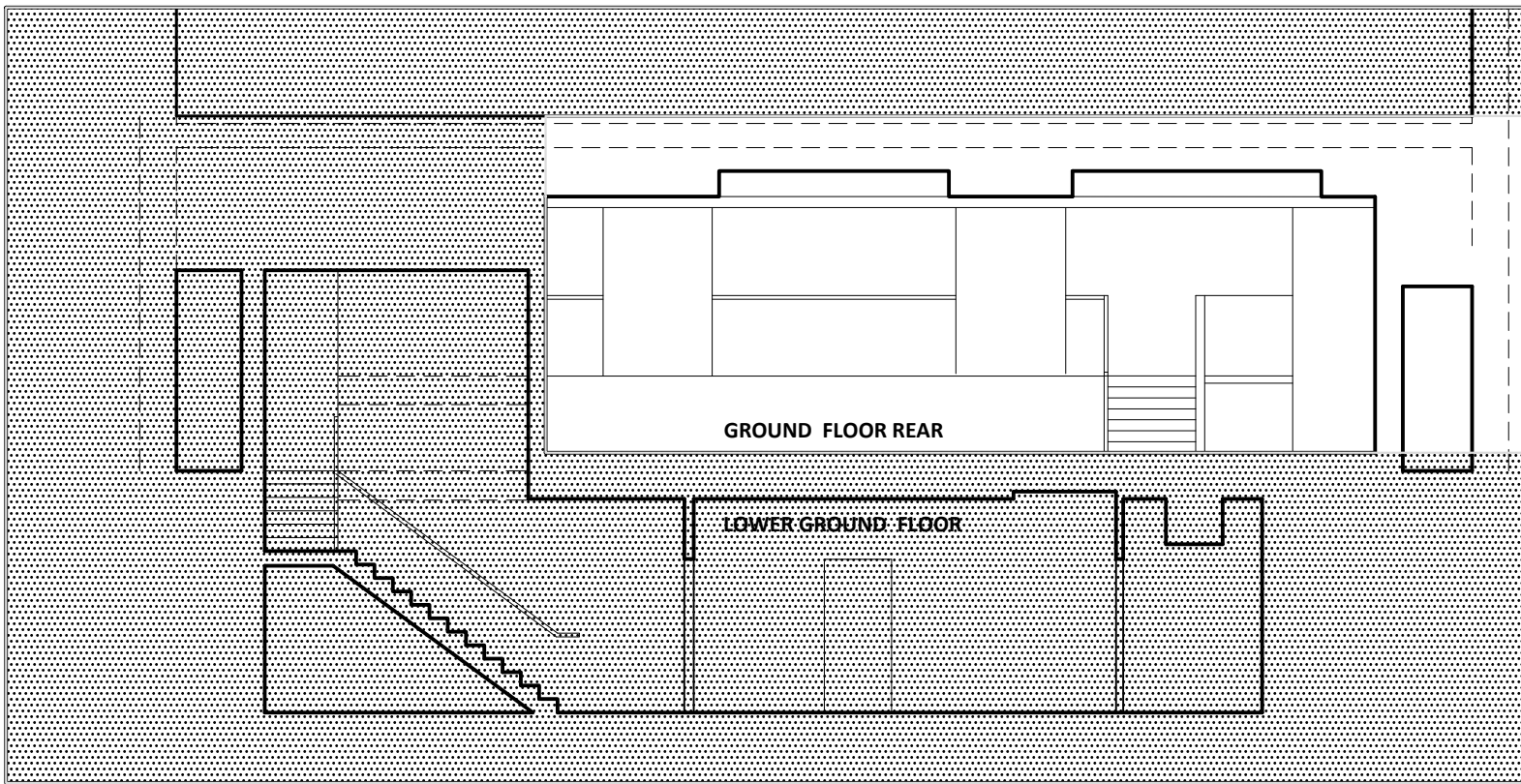


PLAN DETAIL
[TO CHARLOTTE MEWS]
GROUND FLOOR
AS PROPOSED

APPROVED



SECTION AA
AS PROPOSED



SECTION BB
AS PROPOSED

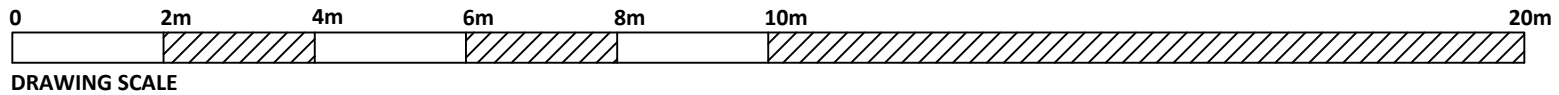


MASSING MODEL VISUAL
[TO CHARLOTTE MEWS]
AS PROPOSED

NOTES / LEGEND

1. ACID ETCHED TOUGHENED GLASS STANDARD SIGN BOARD AS INDICATED, WITH BRUSHED STAINLESS STEEL RAISED LETTERING, BASED FORMED IN POWDER COLOUR COATED ALUMINIUM SHEET (RAL 7016) TO MATCH GLASS BASE SUPPORT TO BALUSTRADE ELSEWHERE ON FRONT ELEVATION, AND MATCHING REPLACEMENT CURTAIN WALLING / GLAZING TO FRONT ELEVATION NOTED ELSEWHERE
2. EXISTING ENTRANCE DOORS REPLACED LIKE-FOR-LIKE IN TOUGHENED GLAZING WITH ACID ETCH MANIFESTATION DETAIL, BASE AND HEAD DETAIL IN COLOUR COATED ALUMINIUM TO MATCH GLAZING SURROUND ELSEWHERE.
3. RAISED PROFILE FRONT ENTRANCE SURROUND IN POWDER COLOUR COATED ALUMINIUM AS EXTENSION OF GLAZED BALUSTRADE BASE DETAIL TO LEFT OF ENTRANCE DOORS AND BASE DETAIL TO STANDARD SIGNAGE TO RIGHT HAND SIDE OF ENTRANCE DOORS, ALL IN RAL 7016 ANTHRACITE WITH CONCEALED FININGS, SURROUND SHADOW GAP JUNCTION WITH BRICKWORK / EXISTING CLADDING, SURROUND RETURNS INTO DOOR FRAME, AND GLAZED BALUSTRADE RECESSED INTO ENTRANCE SURROUND FACADE WITH DETAIL MIMICKING GLAZING TO ALUMINIUM BASE SET OUT IN POINT 6.
4. ACID ETCH GLAZED FRONT ENTRANCE CANOPY SET INTO FRONT ENTRANCE SURROUND AS INDICATED, LAID TO FALL TO RIGHT HAND SIDE WITH CONCEALED DOWNPIPE ADJACENT ENTRANCE SURROUND.
5. POWDER COLOUR COATED ALUMINIUM FRAMED DOUBLE GLAZED REPLACEMENT FULL HEIGHT GLAZING TO OFFICE AREAS, RAL 7016
6. ACID ETCHED TOUGHENED FRAMELESS BALUSTRADE SET INTO STEEL C-CHANNEL SUPPORTS AND RAISED ALUMINIUM CASING BASE SUPPORT MIMICKING BASE SUPPORT CURRENTLY IN PLACE, ALL FIXINGS TO BE CONCEALED / COLOUR COATED TO MATCH BASE COLOUR, ALUMINIUM FORMED OVER SOLID SUBSTRATE AND STEEL CHANNEL GLASS SUPPORT, AND LAID TO FALL BACK TO FLAT ROOF AREA BEHIND, BASE SUPPORT ALUMINIUM CASING TAKEN INTO
7. GLAZED ENTRANCE DOORS TO OFFICE AREA FORMED TO MIMIC GLAZING ADJACENT IN POWDER COLOUR COATED STEEL FRAME AND DOOR SURROUNDS.
8. EXISTING MARBLE / DECORATIVE STONE PLANTERS REMOVED AND DISPOSED OF, NEW OPENING FORMED IN BALUSTRADE AND BRIDGE SECTION RENAISSANCE TO AFFORD ACCESS TO OFFICE FROM CHARLOTTE STREET, EXISTING PAVEMENT LEVEL AND FINISHES MIMICKED IN NEW BRIDGING AREA, FORMED AT LEVEL TO AFFORD ACCESSIBLE ENTRANCE TO GROUND FLOOR AREA, GLAZED BALUSTRADE CONTINUED BACK TO FRONT ELEVATION FROM SITE BOUNDARY TO MATCH OTHER DETAIL, ADJACENT, INCLUDING UPSTAND ALUMINIUM CLAD STEEL CHANNEL BASE DETAIL.
9. DECKED ENCLOSURE AND ROOFLIGHTS UNAFFECTED BY WORKS WITH EXCEPTION OF CHANGES AROUND NEW ENTRANCE DOORS AS CITED 7 AND 8 ABOVE.
10. SOLDER COURSING DETAIL TO PARAPET CAPPING AND ABOVE FENESTRATION, SEALED AND TREATED AT PARAPET LEVEL LINCOL DETAIL OVER OPENINGS FORMED SO THAT SOFFIT REVEAL TO OPENINGS IN BRICK, BRICK TO MATCH ADJACENT DEVELOPMENT (BUFF MULTI TRADITIONAL)
11. BUFF MULTI TRADITIONAL STYLE FACING BRICK, STRETCHER BOND DETAILING TO MIMIC RECENT DEVELOPMENT ADJACENT
12. COLOUR POWDER COATED METAL FRAMED FULL HEIGHT DOUBLE GLAZED FENESTRATION, ACID ETCHED MANIFESTATION.
13. COLOUR POWDER COATED (RAL 9005, BLACK) RAILINGS AND GATES MIMICKING THAT TO ADJACENT DEVELOPMENT
14. COLOUR POWDER COATED METAL FRAMED ENTRANCE DOORS FROM MEWS TO NEW OFFICE AREA, MATCHED TO FENESTRATION ADJACENT
15. FLOS 'CUMBER' UP AND DOWN EXTERNAL LIGHTING POINTS
16. SECURE CYCLE STORAGE, REMOVABLE FOR ACCESS TO SUBSTATION

EXCLUDED FROM APPLICATION



revisions			
D	29012020	PLANNING APPLICATION ISSUE	
C	27012020	CYCLE STORAGE AMENOS	
B	09012020	AMENDS TO PLAN DETAIL AND 3D IMAGE	
A	20122019	PLANNING APPLICATION ISSUE	
	17122019	DRAFT PLANNING APPLICATION ISSUE	
#	date	details	drawn

client	LF CANLIFE UK PROPERTY ACS C/O CANADA LIFE EUROPEAN REAL ESTATE		
project	GROUND FLOOR DEVELOPMENT		
site	ARIEL HOUSE, 74A CHARLOTTE STREET, LONDON		
drawing	MEWS ELEVATION AND BUILDING SECTIONS AS PROPOSED		
project	1381	drawing P155D	status PLNG
drawn	ES	checked BSM	scale A1 100

burogloo

architecture | design consultancy | project delivery
40a wilbury way | hitchin | hertfordshire | SG4 0AP | admin@burogloo.com