

# PUSHKIN HOUSE

## External Facade - Lighting

A discreet lighting approach will be applied to the external façade of Pushkin House as follows:

- The Window reveals lit by small fixtures colour balanced to a warm or cool temperature
- Fan light windows lit by small linear fixtures balanced to a warm or cool temperature
- The above lighting can be dimmed Through the main control system to achieve a balanced level.





# PUSHKIN HOUSE

## Basement - Lighting

### External

The external area will be lit by a series of surface mounted box down lights that will be attached to the brick wall – the fixtures will be fitted with a warm colour temperature LED.

### Stairs

The stairs leading from the ground floor to the basement will be illuminated from LED strip incorporated into the handrail.

### Foyer / Lobby

The foyer will be lit by a series of suspended pendants.

### WC

The WC area will be lit from concealed lighting behind the Mirror and Small recessed down lighting for general light

### Gallery B.1

The space will be lit by surface mounted tracks fitted with small LED accent Zoom Spots (adjustable beam angle 13-37 degrees).

The above lighting can be dimmed through the main control system to achieve a balanced level.

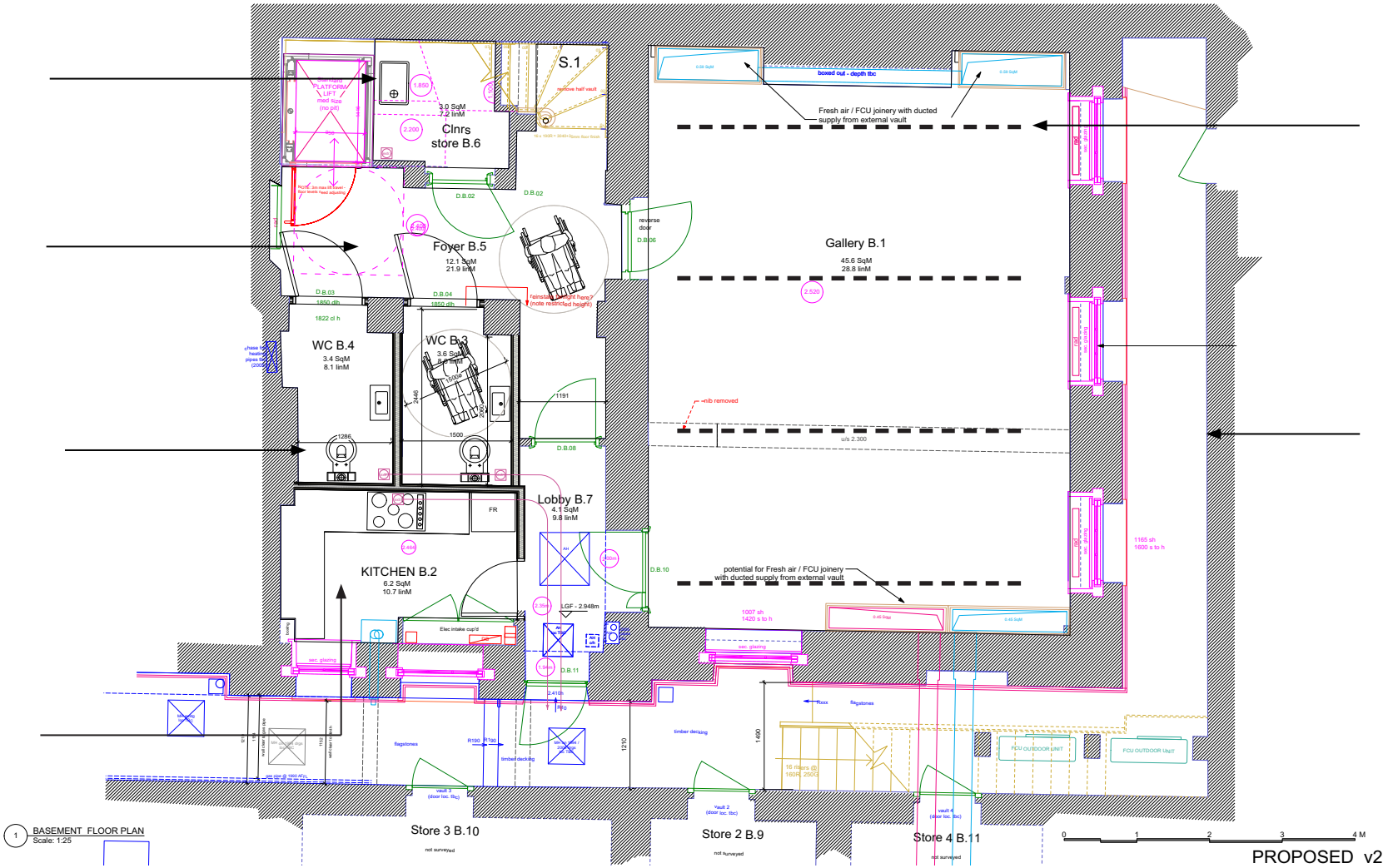
Illuminated handrail



Suspended Pendants

Back lit mirror

Task Lighting



# PUSHKIN HOUSE

## Ground Floor - Lighting

### Entrance Reception

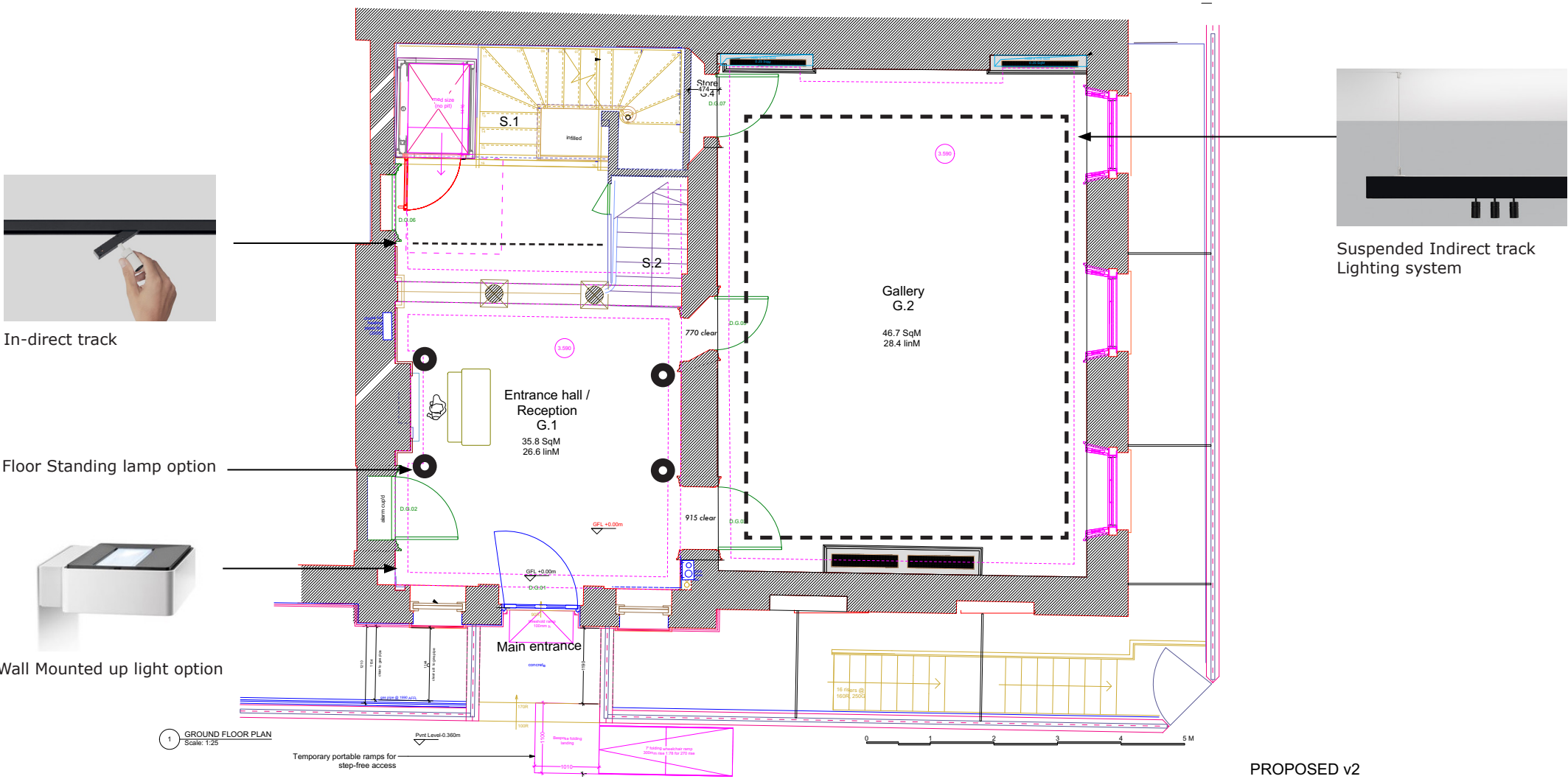
The reception area will be either lit by discreet wall mounted up lights or by floor standing fixtures. The lighting will give a soft ambient level quality.

The area next to the stairs will be lit from a suspended indirect track system fitted with accent spots. The in-direct element of the track will reflect light off the ceiling, which will give a good ambient level to the space.

### Stairs

The stairs leading from the ground floor to the first floor will be illuminated from LED incorporated into the handrail.

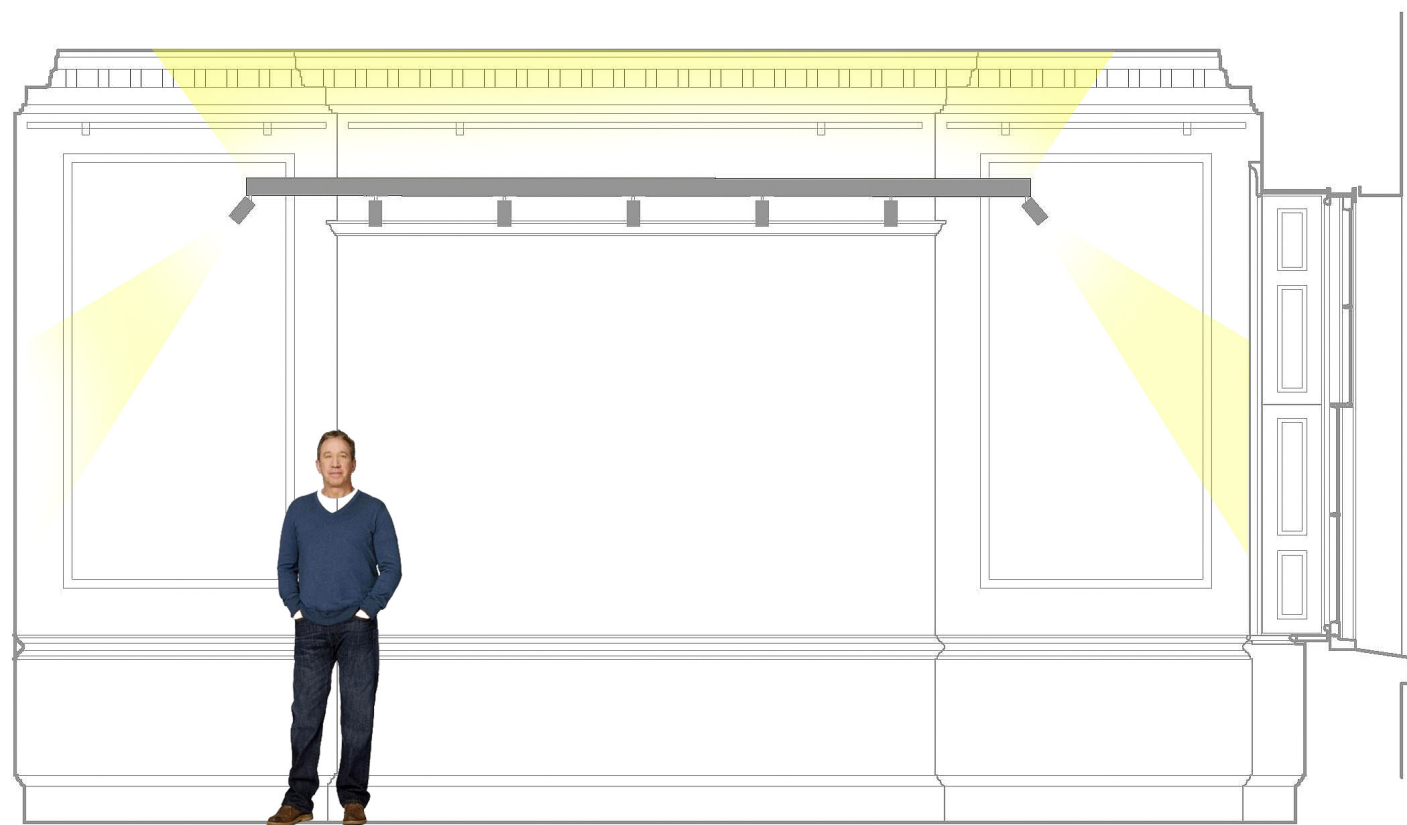
The above lighting can be dimmed through the main control system to achieve a balanced level.



PUSHKIN HOUSE

Ground Floor - Lighting

Indirect Track lighting



Images courtesy of Reggiani Lighting

# PUSHKIN HOUSE

## First Floor - Lighting

### Foyer

The first floor foyer will be lit by a pair of suspended Georgian lanterns with a lighting track attached to the ceiling fitted with micro LED spots to illuminate artwork etc.

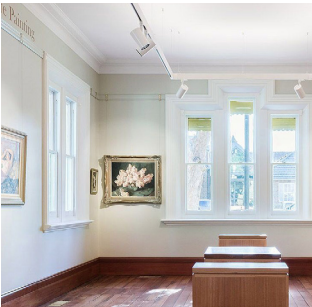
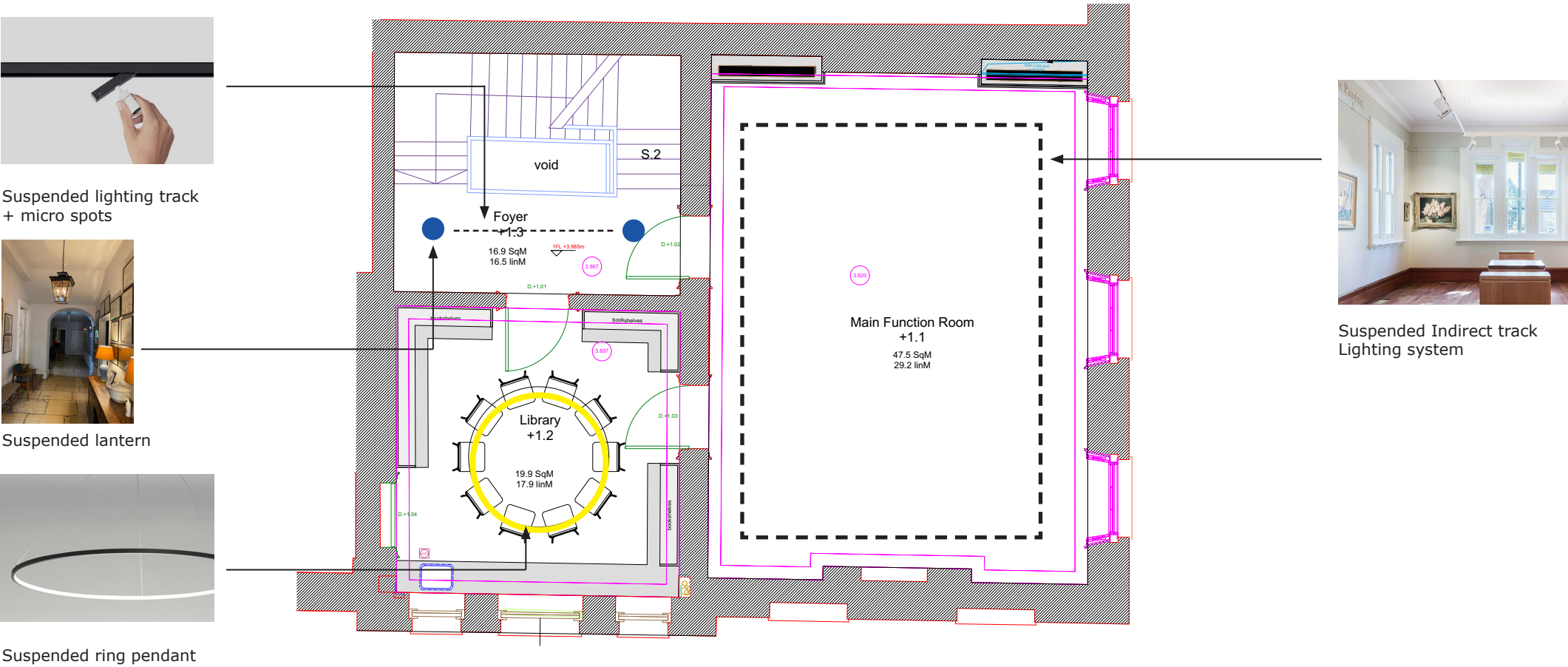
### The Library

The library will be lit by a circular direct/indirect pendant.

### Main Function Room

The Function room will be lit by suspended indirect lighting track fitted with LED accent Zoom Spots (adjustable beam angle 13-37 degrees). The indirect element of the track will reflect light off the ceiling, which will give a good ambient level to the space.

The above lighting can be dimmed through the main control system to achieve a balanced level.



Suspended Indirect track Lighting system

1 FIRST FLOOR PLAN  
Scale: 1:25

PROPOSED v2

# PUSHKIN HOUSE

## Second Floor - Lighting

### Landing

Art work and general lighting to the space will be lit from a high level surface mounted track above the cove fitted with accent track spots.

### Meeting Rooms

The three meeting rooms will be lit from suspended direct/indirect linear systems.

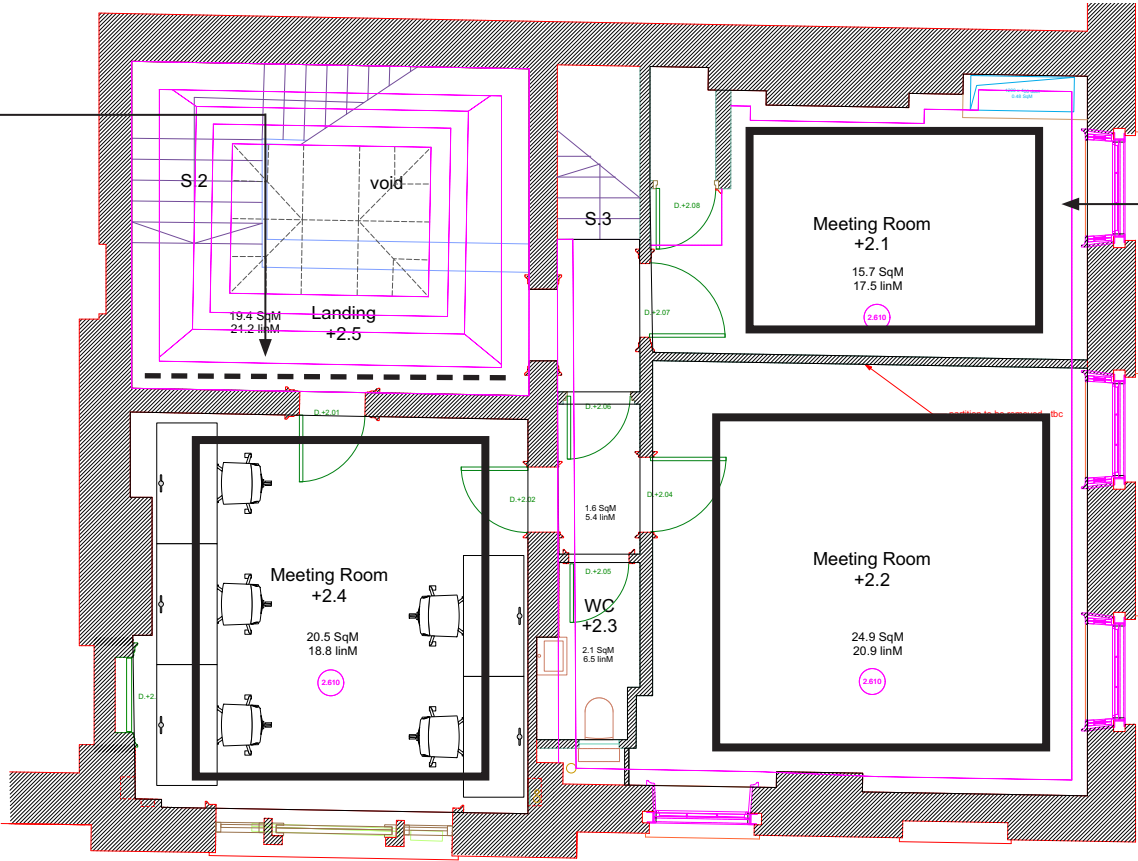
The above lighting can be dimmed through the main control system to achieve a balanced level.



Lighting track above Cove + accent fixtures



Suspended Direct/In-Direct



1 SECOND FLOOR PLAN  
Scale: 1:25



PROPOSED v2



# PUSHKIN HOUSE

## Third Floor - Lighting

### Russian Language Centre & Offices

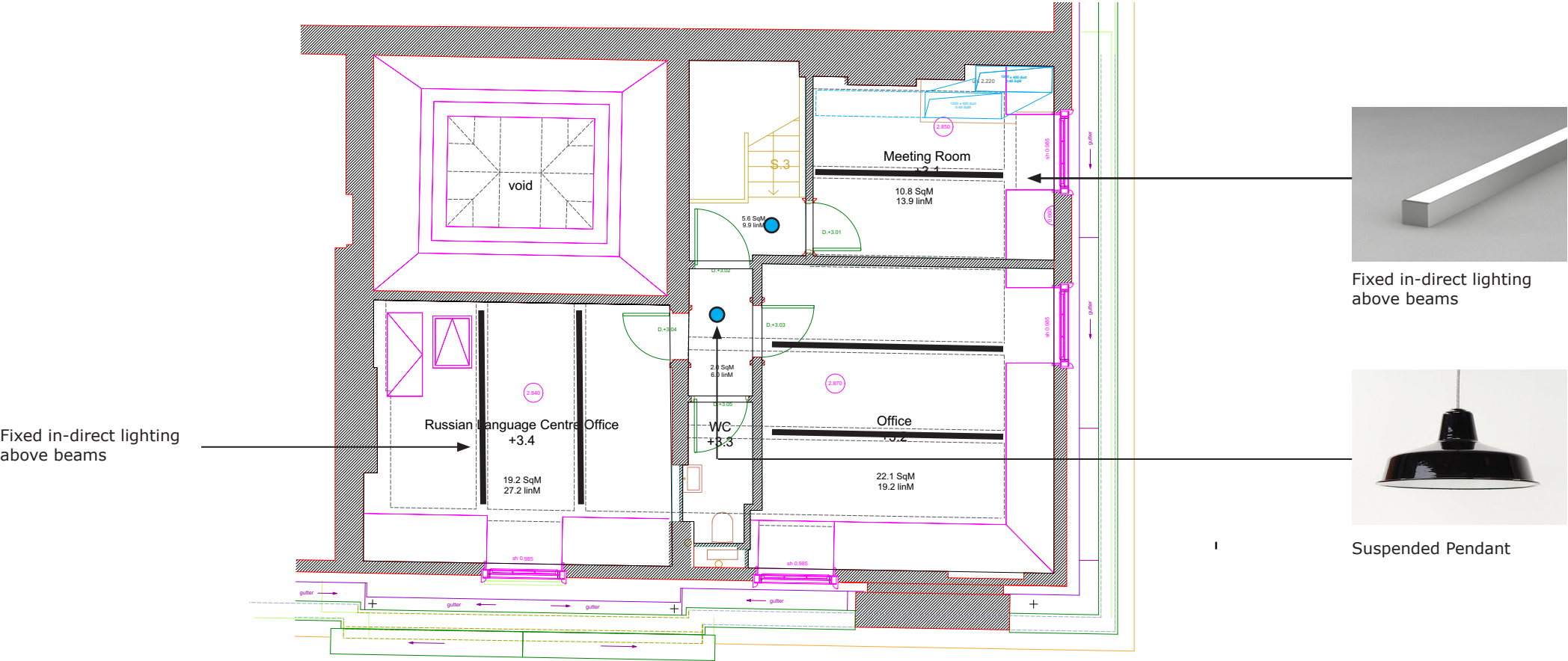
The office areas will be lit from Linear indirect lighting mounted above the beams.

### Lobby & WC

The lobby will be lit by suspended pendants.

The WC will be lit from concealed lighting behind the Mirror and Small recessed down lighting for general light.

The above lighting can be dimmed through the main control system to achieve a balanced level.



1 THIRD FLOOR PLAN  
Scale: 1:25



PROPOSED v2