



MIRIA HARRIS

13 Stevens Avenue
London, E9 6RX
+44 (0) 7887 993 197
miria@miriaharris.com
www.miriaharris.com

Project **Frognal - Landscaping Package**

Date **4 May 2022**

The proposed new landscaping of the rear garden of 111 Frognal is greatly inspired by the nearby Hampstead Heath, with areas of wild grass and wildflowers, a pond and a variety of deciduous trees and shrubs, some of which will be native species.

The landscaping proposed as part of the new garden scheme will further enrich the ecology of the area by increasing the footprint of planting, and through adding a wide selection of new trees, shrubs and herbaceous plants. This injection of new planting will be hugely beneficial, creating new habitats for wildlife and attracting butterflies, bees and other pollinating insects.

The inclusion of a bug hotel, wild swimming pond and willow dome will further enhance the garden as a wildlife sanctuary.



Project 111 Frogna1

Date 4 February 2022

Client Zoe Chan and Merlin Eayrs

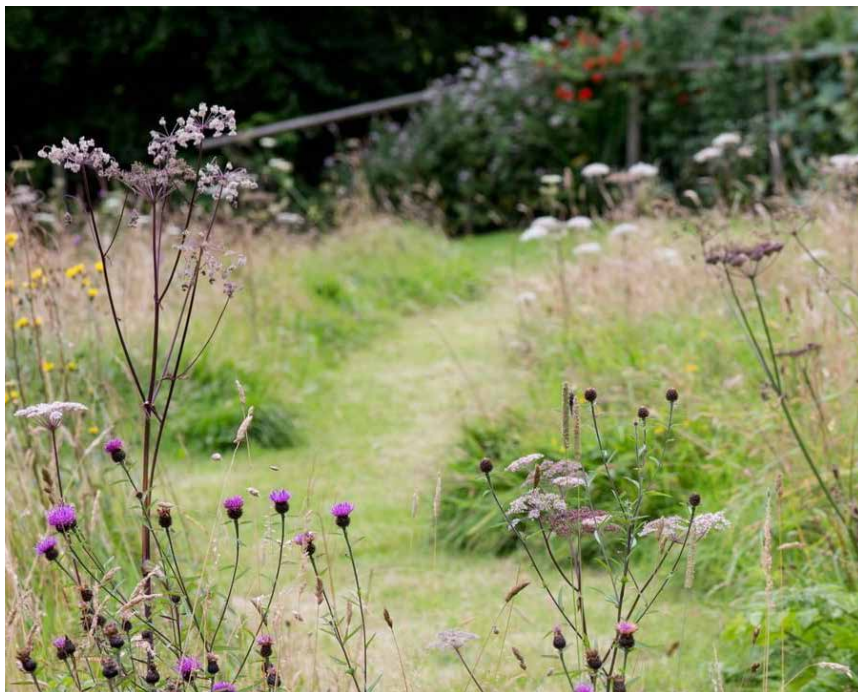
Drawing Proposed New Landscaping Scheme - Sketch Plan

Drawing No. 118_01

Scale	NTS
-------	-----

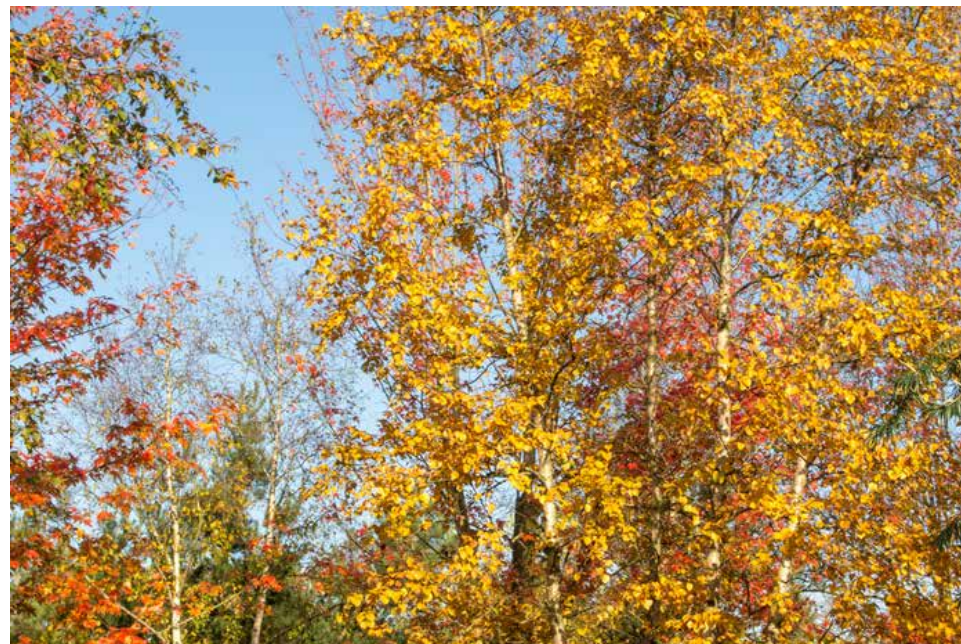
© Miria Harris Landscape Design

Note: all dimensions and levels shown on the drawing are to be confirmed by contractors on site before materials are purchased or works begin. No responsibility will be taken for scaling from this drawing which is supplied for design purposes only, unless stated otherwise.



<p>MIRIA HARRIS</p>	<p>13 Stevens Avenue London, E9 6RX +44 (0) 7887 993 197 miria@miriaharris.com www.miriaharris.com</p>	<p>Project 111 Frognal</p> <p>Date 4 May 2022</p>	<p>Client Zoe Chan and Merlin Eayrs</p> <p>Drawing Proposed New Landscaping Scheme - Sketch View - Rear Elevation</p>	<p>Drawing No. 118_02</p> <p>Scale NTS</p>	<p>© Miria Harris Landscape Design</p> <p>Note: all dimensions and levels shown on the drawing are to be confirmed by contractors on site before materials are purchased or works begin. No responsibility will be taken for scaling from this drawing which is supplied for design purposes only, unless stated otherwise.</p>
---------------------	--	---	---	--	---

SAMPLE PLANTING - ORNAMENTAL TREES Illustrated in different seasons, clockwise below: *Corylus avellana*, *Prunus domestica* (species), *Malus domestica* (species and blossom), *Betula pendula*

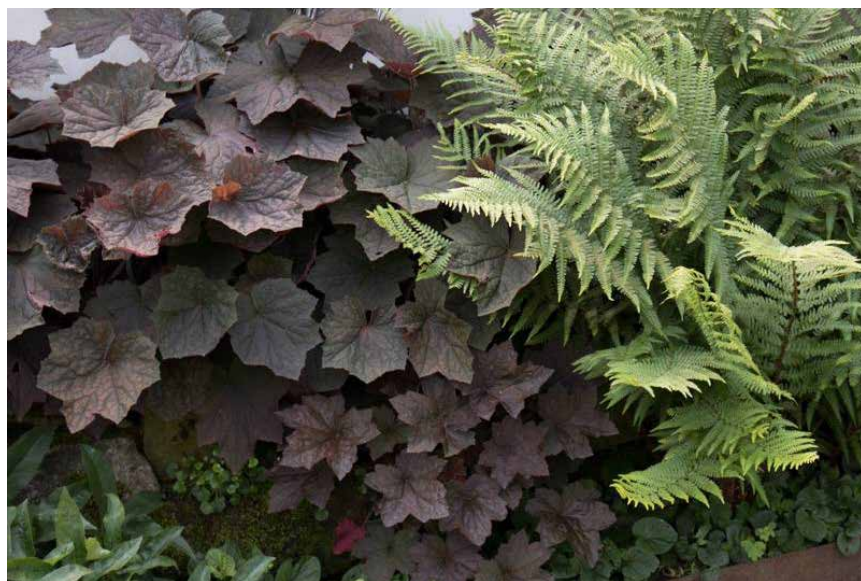
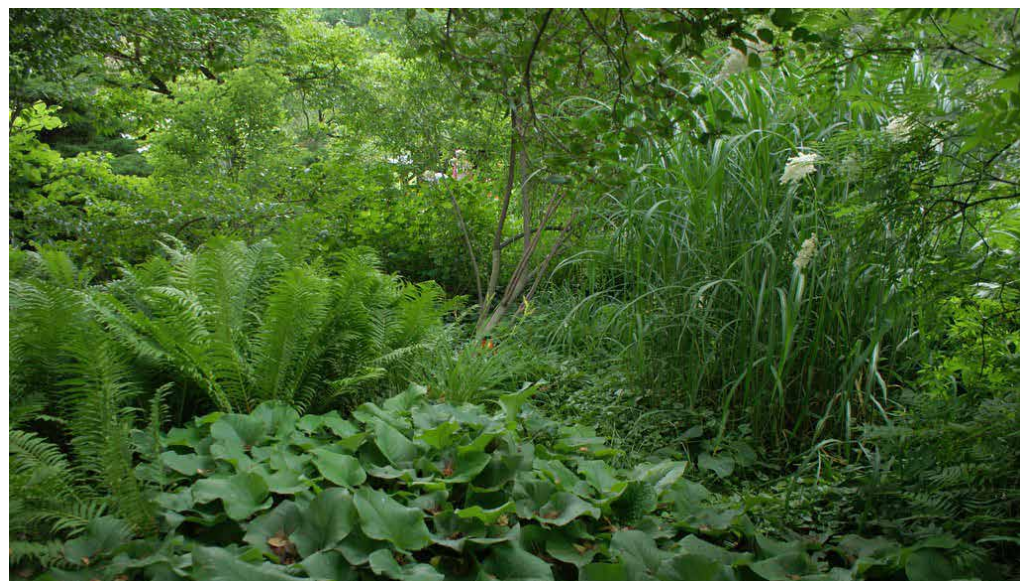
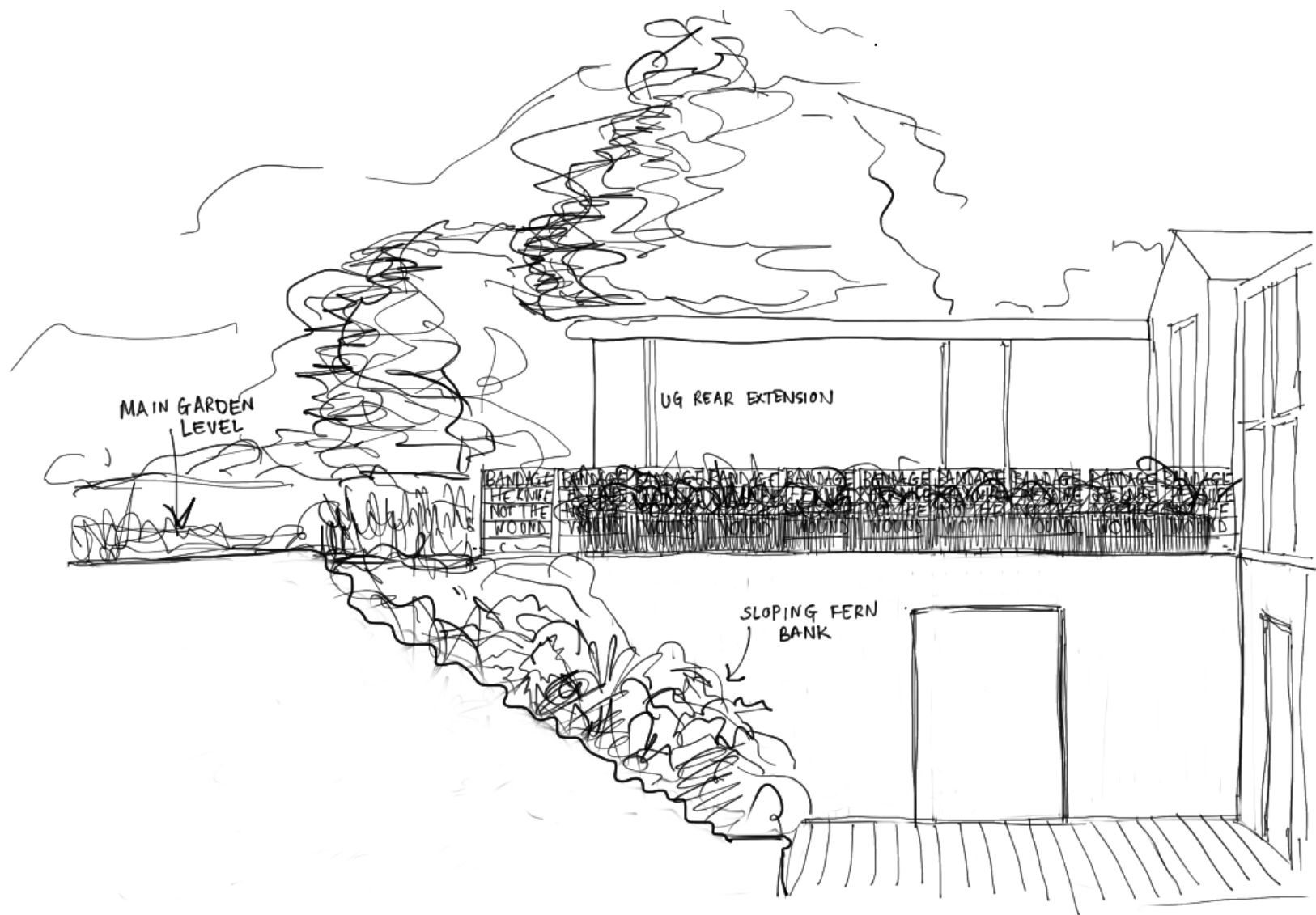


SAMPLE PLANTING - MIXED ORNAMENTAL BORDERS

Illustrated clockwise from right:

- Alchemilla mollis* - attractive scalloped foliage and frothy lime green flowers from June to September (up to 60cm)
- Fragaria vesca* - wild / alpine strawberries that flower and fruit from June to October, really good for scrambling in shadier parts of the garden
- Paeonia* Mrs William Kelway - a semi-double satiny white tree peony (up to 1.2m high), flowering in May and happy in full sun or partial shade
- Digitalis purpurea* f. *albiflora* - a bee friendly partial shade loving perennial that flowers from June to July (up to 1.8m high)
- Persicaria amplexicaulis* Alba - a late flowering (July to October) bee friendly perennial happy in full sun or partial shade (up to 1.2m)
- Sanguisorba officinalis* - a tall (up to 1.2m) late flowering perennial with maroon bottle brush-like flowers from June to September





MIRIA HARRIS

13 Stevens Avenue
London, E9 6RX
+44 (0) 7887 993 197
miria@miriaharris.com
www.miriaharris.com

Project 111 Frogna1

Date 4 May 2022

Client Zoe Chan and Merlin Eayrs

Drawing Proposed New Landscaping Scheme -
Sketch View - Fern Bank

Drawing No. 118_03

Scale NTS

© Miria Harris Landscape Design

Note: all dimensions and levels shown on the drawing are to be confirmed by contractors on site before materials are purchased or works begin. No responsibility will be taken for scaling from this drawing which is supplied for design purposes only, unless stated otherwise.

SAMPLE PLANTING - FERN BANK

Illustrated clockwise from below:

Helleborus orientalis Harvington double slaty blue - evergreen foliage with maroon flowers from February to April
Dryopteris wallichiana - large (up to 90cm) evergreen fern which can take full shade
Tiarella Spring Symphony - a small perennial (up to 30cm) with white pink foam like flowers from May to July
Pachysandra terminalis - an evergreen ground cover plant with a short flowering period from May to June
Asplenium scolopendrium - evergreen fern, up to 60cm in height and width
Polystichum setiferum - a very large (up to 1.2m) evergreen fern which can cope with full shade
Epimedium x rubrum - heart-shaped leaves with bronze tinted young leaves and tiny, crimson and pale yellow flowers in April and May. Epimediums have a slow spreading, compact habit (up to 30cm) with foliage that takes on autumn colour (full sun and partial shade)

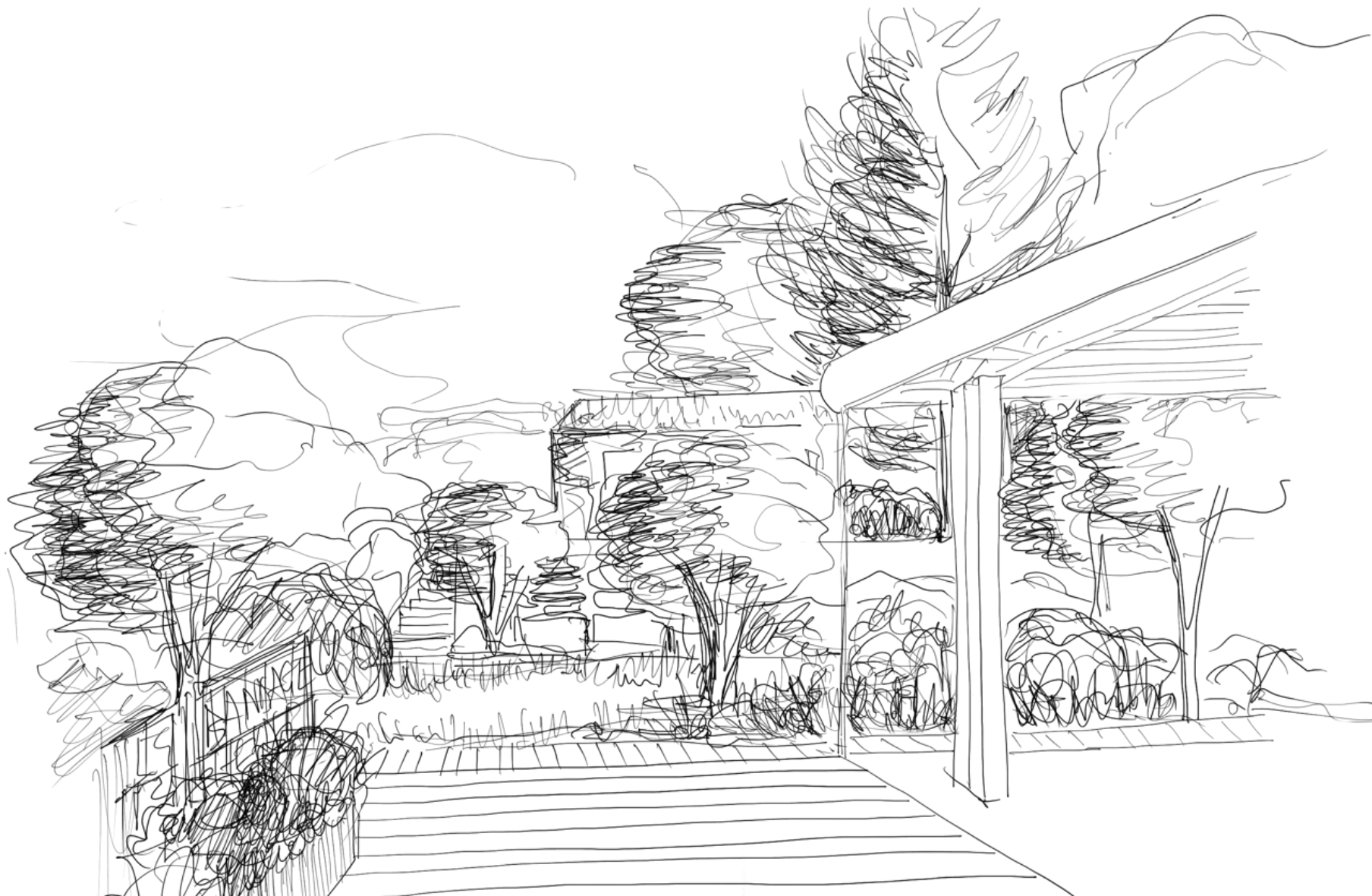


SAMPLE PLANTING - GRASSES AND SHRUBS

Illustrated clockwise from right:

- Anemanthele lessoniana* - perennial evergreen grass (up to 1m) with wispy flowers from May to September
- Myrtus communis* - a medium sized evergreen shrub (up to 3m) with fragrant white flowers from July to August. The foliage can be used to season meat and it thrives in full sun
- Tellima grandiflora* - a medium height (up to 80cm) perennial that thrives in shade and has lime green spikes of bell shaped flowers from May to July
- Pittosporum* Golf Ball - an evergreen shrub, forming a neat, rounded mound which will give structure and architectural interest to the planting scheme, can get really big but for the purposes of the renders please illustrate as around 50-60cm loose mounds
- Prunus lusitanica* Myrtifolia - evergreen shrub that can be clipped into a loose mounding shape, good for providing structure, different mounding shapes, 40cm diameter, 60cm diameter
- Hackonechloa macra* - up to 35cm, a semi-evergreen grass with fine wispy flowers from August to October that is happy in full sun or partial shade
- Molinia caerulea subsp. caerulea* Moorhexe - a medium height (up to 50cm) summer flowering ornamental deciduous





MIRIA HARRIS

13 Stevens Avenue
London, E9 6RX
+44 (0) 7887 993 197
miria@miriaharris.com
www.miriaharris.com

Project 111 Frognal

Date 4 May 2022

Client Zoe Chan and Merlin Eayrs

Drawing Proposed New Landscaping Scheme -
Sketch View - View from the house

Drawing No. 118_03

Scale NTS

© Miria Harris Landscape Design

Note: all dimensions and levels shown on the drawing are to be confirmed by contractors on site before materials are purchased or works begin. No responsibility will be taken for scaling from this drawing which is supplied for design purposes only, unless stated otherwise.

SAMPLE PLANTING - CLIMBING

Illustrated clockwise from right:

Humulus lupulus Aureus - the golden hop has yellow green leaves that turn bright lime yellow in autumn and have cone like flowers which can be used in brewing or dried to make hop pillows that aid sleep. Hops are also wildlife friendly plants to grow

Rosa canina - the classic dog rose, this large shrub (up to 3m x 2.5m) has the sweetest hips

Rubus fruticosum Loch Ness - a thornless, compact variety of blackberry that can cope with partial shade

Trachelospermum jasminoides - this evergreen star Jasmine is a climbing plant that produces a profusion of sweet smelling flowers from mid-summer to Autumn

Rosa The Lady of The Lake- a fragrant, repeat flowering bee friendly rambling rose

Clematis var *balearica* Freckles - an evergreen clematis that flowers from December to February

Passiflora edulis - the edible fruited passion flower with evergreen foliage and producing an abundance of fruits from late summer into autumn

Hydrangea anomala subsp. *petiolaris* - a deciduous climbing hydrangea that is bee friendly, can cope in partial shade and doesn't need any support to climb. It flowers from June to August



SAMPLE PLANTING - HERBS

Illustrated clockwise from right:

- Thymus vulgaris* - thyme
- Hysoppus officinalis* - hyssop (a culinary herb that flowers June to September)
- Allium schoenoprasum* - chives
- Laurus nobilis* - bay
- Rosmarinus officinalis* - rosemary
- Origanum vulgare* - also called marjorum
- Salvia officinalis* - sage



SAMPLE PLANTING - SPRING BULBS

Illustrated clockwise from right:

Allium ursinum - common name is ramsoms or wild garlic, it is delicious cooked like spinach

Scilla bifolia Rosea - a small dusky pink flowering bulb from February to March (10cm) which grows in sun or part-shade and is particularly good for naturalising under trees and shrubs

Camassia quamash - the bulbs of this Camas are reputedly edible, but harvesting them will destroy the plant, which will light up the partly shady areas of the garden from May to June

Nectaroscordum siculum - commonly known as sicilian honey garlic, this plant flowers from May and is good in part shade as well as full sun

Chionodoxa luciliae Alba - good for naturalising under trees and shrubs, this short (15cm) plant will flower from March to April

Galanthus nivalis - snowdrops, planted in the green will bring a garden to life in January and February

Allium Roseum - this May flowering dusky pink allium has a lax habit and stems of up to 65cm and if it is grown organically is very good for the bees and butterflies

