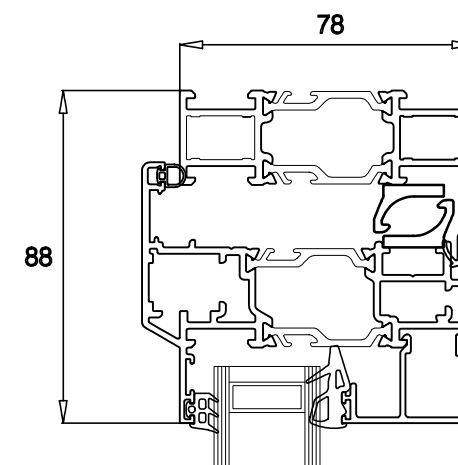
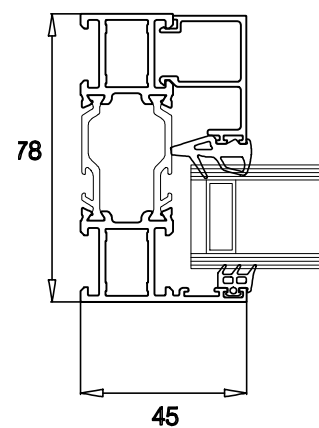


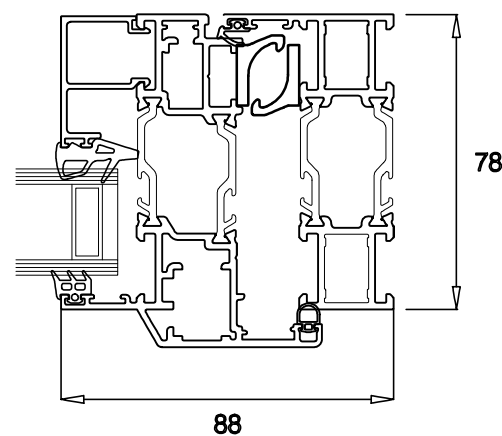
TYPICAL HEAD ~ FIXED LIGHT



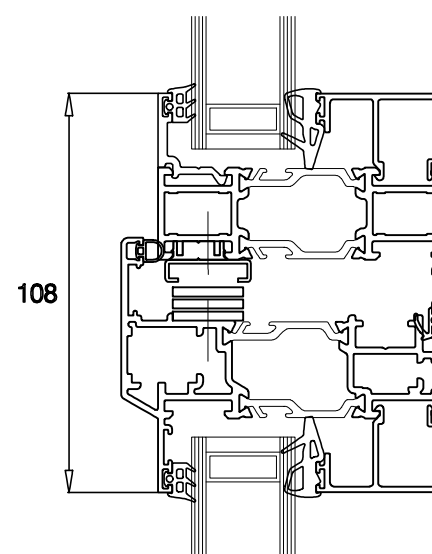
TYPICAL HEAD ~ OPENABLE LIGHT



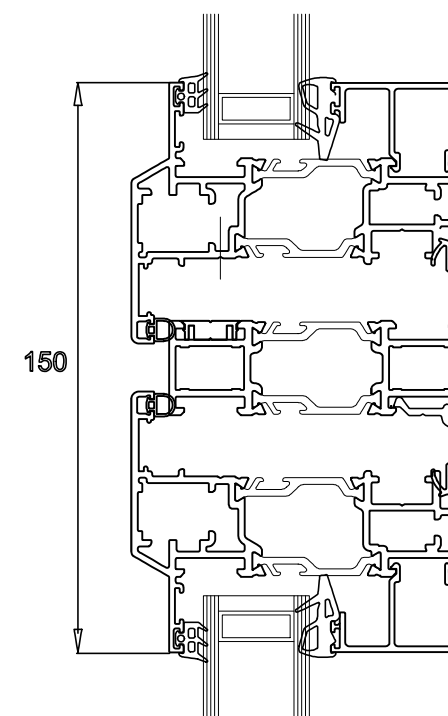
TYPICAL SIDE JAMB  
~ FIXED LIGHT



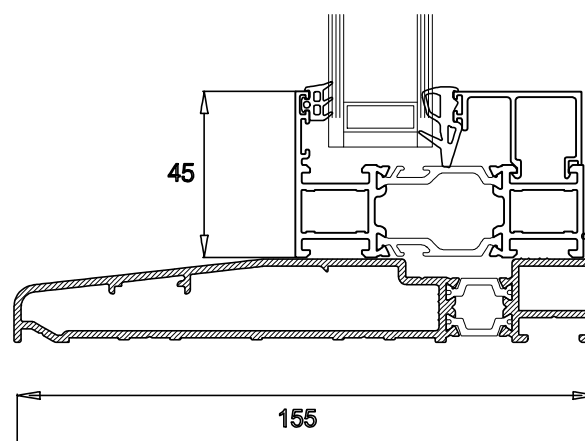
TYPICAL SIDE JAMB ~  
OPENABLE LIGHT



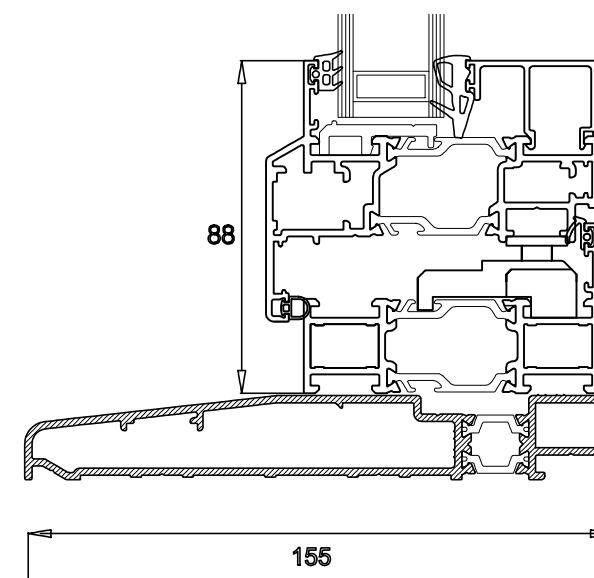
TYPICAL MID JAMB ~  
FIXED LIGHT / OPENABLE LIGHT



TYPICAL MID JAMB ~ OPENABLE  
LIGHT / OPENABLE LIGHT



TYPICAL CILL ~ FIXED LIGHT



TYPICAL CILL ~ OPENABLE LIGHT

DO NOT SCALE

**SAFETY, HEALTH AND ENVIRONMENTAL  
INFORMATION**

In addition to the hazards/risks normally associated with the types of work detailed on this drawing, note the following:

CONSTRUCTION

## MAINTENANCE/CLEANING

DECOMMISSIONING/DEMOLITION	
----------------------------	--

It is assumed that all works will be carried out by a competent contractor working, where appropriate, to an approved method statement

TYPICAL DETAILS OF THE NEW WINDOWS AS SUPPLIED  
BY WINDOW MANUFACTURER

[illegible]

Drawing Status		Suitability
PLANNING APPLICATION		SO

**ATKINS**

London, Nova North  
11 Bressenden Place  
Westminster  
London  
SW1E 5BY  
Tel: +44 (0)203 282 6023  
Fax: +44 (0)  
[www.atkinsglobal.com](http://www.atkinsglobal.com)

Copyright © Atkins Limited (2013)

Client

**MOPAC** | MAYOR OF LONDON  
OFFICE FOR POLICING AND CRIME

Project Title	<p>WEST HAMPSTEAD POLICE STATION WINDOW &amp; DOOR REPLACEMENT</p>
---------------	--

Drawing Title

TYPICAL NEW WINDOW DETAILS

Scale 1:2	Designed KW	Drawn JEL	Checked --	Authorised --
Original Size A3	Date 06.04.22	Date 06.04.22	Date --/--/--	Date --/--/--

Drawing Number	Revision
5207974-ATK-WH-XX-DE-A-4003	P 1