



VIEW AT MAIN SHOPFRONT

NOTE:  
PLACEHOLDER ARTWORK ONLY - CUSTOM  
COMMISSION ARTWORK BY DAVE BANE  
ILLUSTRATOR TO BE DEVELOPED

DESIGN INTENT ONLY  
NOT FOR CONSTRUCTION



STARBUCKS COFFEE  
COMPANY

2401 UTAH AVENUE SOUTH  
SEATTLE, WASHINGTON 98134  
(206) 318-1575

DRAWINGS AND SPECIFICATIONS ARE  
CONFIDENTIAL AND SHALL REMAIN THE SOLE  
PROPERTY OF STARBUCKS CORPORATION, WHICH  
IS THE OWNER OF THE COPYRIGHT IN THIS WORK.  
THEY SHALL NOT BE REPRODUCED (IN WHOLE OR  
IN PART), SHARED WITH THIRD PARTIES OR USED IN  
ANY MANNER ON OTHER PROJECTS OR  
EXTENSIONS TO THIS PROJECT WITHOUT THE  
PRIOR WRITTEN CONSENT OF STARBUCKS  
CORPORATION. THESE DRAWINGS AND  
SPECIFICATIONS ARE INTENDED TO EXPRESS  
DESIGN INTENT FOR A PROTOTYPICAL STARBUCKS  
STORE (WHICH IS SUBJECT TO CHANGE AT  
ANYTIME) AND DO NOT REFLECT ACTUAL SITE  
CONDITIONS. NEITHER PARTY SHALL HAVE ANY  
OBLIGATION NOR LIABILITY TO  
THE OTHER (EXCEPT STATED ABOVE) UNTIL A  
WRITTEN AGREEMENT IS FULLY EXECUTED BY  
BOTH PARTIES.

STARBUCKS TEMPLATE VERSION EMEA 2019\_01

ARCHITECT OF RECORD

THIS DRAWING IS A DESIGN DEVELOPMENT  
DOCUMENT. SITE SPECIFIC MODIFICATIONS MADE  
UNDER THE RESPONSIBLE CHARGE OF THE  
ARCHITECT AND/OR ENGINEER-OF-RECORD WILL  
BE REQUIRED PRIOR TO USING THIS DOCUMENT  
FOR BIDDING, PERMITTING, OR CONSTRUCTION.

DESIGN DEVELOPMENT ONLY - NOT INTENDED FOR CONSTRUCTION

PROJECT NAME:  
**CAMDEN - 253 HIGH ST**

PROJECT ADDRESS:  
**UNITED KINGDOM  
LONDON  
CAMDEN 253 HIGH STREET  
NW1 8RN**

STORE # **68515**  
PROJECT # **94563-001**  
PLAYBOOK FORMAT **SHORT**

INITIAL ISSUE DATE 08/04/22  
DESIGN MANAGER ADRIENNE COOPER  
PROJECT DESIGNER JULIA JANOSA  
CHECKED BY  
CASEWORK CONCEPT  
LEED® AP

REVISION SCHEDULE

REV	DATE	BY	DESCRIPTION

SHEET TITLE:

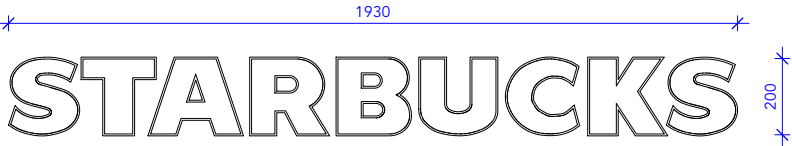
Design Intent

SCALE: AS SHOWN (@A3)

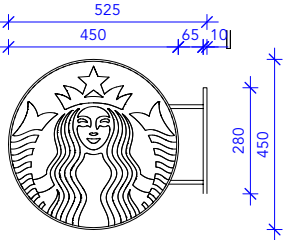
G-0002



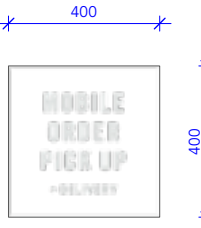
SIGNAGE FIXTURE SCHEDULE				
DESIGN ID	COUNT	DESCRIPTION	RESP	COMMENTS
XS013	1	SIGN - LOGO DISK PERPENDICULAR NON-ILLUMINATED SMALL - 450MM	SS	REFER TO PAGE A-1001
XS101	1	SIGN - WORDMARK SURFACE MOUNTED ILLUMINATED SMALL - 200MM	SS	REFER TO PAGE A-1001
XS304	1	WINDOW VINYL - MOP + DELIVERY	SS	REFER TO PAGE A-1001
XS308	1	MOP & DELIVERY SIGN, CEILING MOUNTED, ILLUMINATED	SS	SINGLE SIDED SIGN, REFER TO PAGE A-1001



2 ID XS101- WORDMARK SURFACE MOUNTED  
1:20



3 ID XS013 - SIGN - LOGO DISK  
1:20

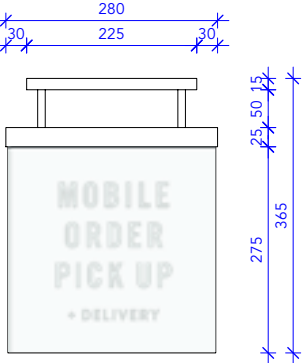


4 ID XS304 - MOP & DELIVERY, WINDOW VINYL  
1:20



5 ID XS308 - MOP & DELIVERY SIGN  
1:25

CM/PM TO ADVISE CONFIRM ALL DIMENSIONS TO STARBUCKS



6 ID XS308  
1:10

### ARCHITECTURAL SITE PLAN NOTES

- REFER TO EXTERIOR ELEVATIONS ON SHEET A-2001 FOR BUILDING SIGNAGE LOCATION AND DESIGN ID. SEE ELECTRICAL DETAILS FOR ALL ASSOCIATED POWER REQUIREMENTS.
- LANDLORD TO BE PROVIDED WITH DRIVE-THRU DETECTION LOOP PRIOR TO DRIVE-THRU LANE CONSTRUCTION.
- DRIVE-THRU EQUIPMENT INCLUDING VEHICLE DETECTION LOOP, WIRELESS COMMUNICATION AND MONITORS COORDINATED BY STARBUCKS CONSTRUCTION MANAGER/PROJECT MANAGER. REFER TO ELECTRICAL SPECIFICATIONS FOR ELECTRICAL REQUIREMENTS.
- LANDLORD TO BE PROVIDED WITH ENGINEERING DRAWINGS FOR ALL SIGNAGE BASES. SIGNAGE CONTRACTOR TO PROVIDE SITE DRAWINGS SHOWING SIGN TYPE AND LAYOUT.
- GENERAL CONTRACTOR TO APPLY CONCRETE SEALER TO ALL EXTERIOR CONCRETE PATIO AND WALKWAY SURFACES.
- SEE ARCHITECTURAL SITE DETAIL FOR FURTHER INFORMATION.

### LANDLORD/DEVELOPER'S WORKS

ALL WORKS TO BE COMPLETED IN LINE WITH AGREED LANDLORD SPECIFICATIONS AND DRAWINGS. ANY CHANGES TO LANDLORD'S WORK, WHICH COULD IMPACT STARBUCKS DESIGN INTENT, TO BE RAISED TO STARBUCKS CONSTRUCTION MANAGER/PROJECT MANAGER.

- LANDSCAPING TO BE PROVIDED PER MARKET SPECIFIC ZONING REQUIREMENTS AND/OR LEED
- DRIVE-THRU LANE TO BE DESIGNED AND CONSTRUCTED IN LINE WITH CURRENT STARBUCKS GUIDELINES
- LANDLORD IS RESPONSIBLE FOR PROVIDING SITE WORK, INCLUDING BUILDING SHELL, FOUNDATIONS, LANDSCAPING, ROADWAYS, KERBS, WHITE-LINING TO CARPARK, CONDUITS, ETC.

### RESPONSIBILITY LEGEND

UNLESS OTHERWISE AGREED, ALL ITEMS SUPPLIED ACCORDING TO PARTY LISTED IN "RESPONSIBILITY" COLUMN

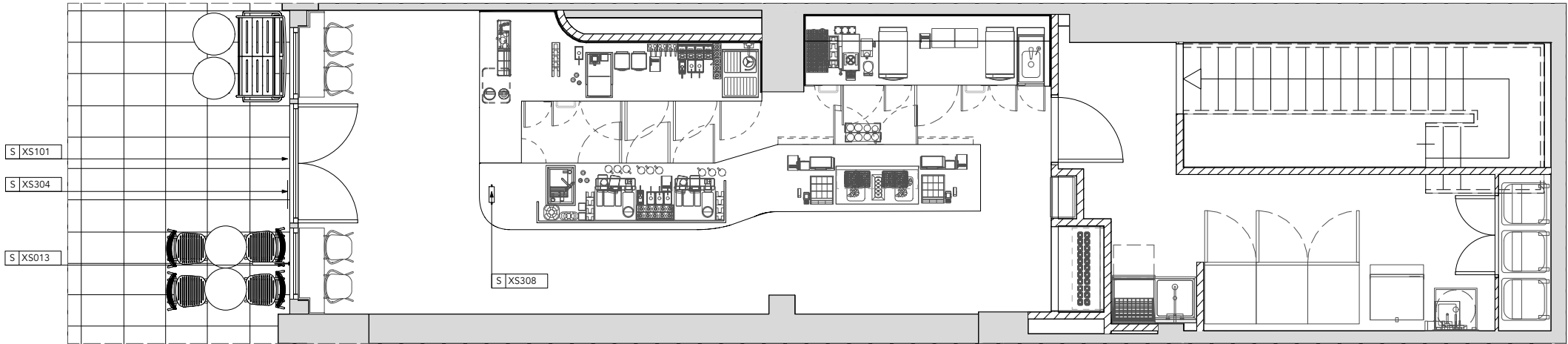
GC	GENERAL CONTRACTOR
CS	CASEWORK SUPPLIER
CM	CONSTRUCTION MANAGER
LL	LANDLORD
SB	STARBUCKS
WH	STARBUCKS WAREHOUSE (3PL)
VD	STARBUCKS VENDOR DIRECT
LC	LICENSEE

### SHEET NOTES

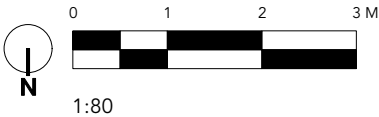
- PROVIDE PROTECTIVE BOLLARDS ON BOTH SIDES OF EXTERIOR ELECTRICAL/UTILITY SERVICE ADJACENT TO VEHICULAR TRAFFIC. EXAMPLES INCLUDE FIRE STAND PIPE, GAS AND ELECTRICAL METERS, SITE TRANSFORMERS, ETC.

### LEGAL DESCRIPTION

- EDIT AS REQUIRED



1 ARCHITECTURAL SITE PLAN  
1:80



### STARBUCKS COFFEE COMPANY

2401 UTAH AVENUE SOUTH  
SEATTLE, WASHINGTON 98134  
(206) 318-1575

DRAWINGS AND SPECIFICATIONS ARE CONFIDENTIAL AND SHALL REMAIN THE SOLE PROPERTY OF STARBUCKS CORPORATION, WHICH IS THE OWNER OF THE COPYRIGHT IN THIS WORK. THEY SHALL NOT BE REPRODUCED (IN WHOLE OR IN PART), SHARED WITH THIRD PARTIES OR USED IN ANY MANNER ON OTHER PROJECTS OR EXTENSIONS TO THIS PROJECT WITHOUT THE PRIOR WRITTEN CONSENT OF STARBUCKS CORPORATION. THESE DRAWINGS AND SPECIFICATIONS ARE INTENDED TO EXPRESS DESIGN INTENT FOR A PROTOTYPICAL STARBUCKS STORE (WHICH IS SUBJECT TO CHANGE AT ANYTIME) AND DO NOT REFLECT ACTUAL SITE CONDITIONS. NEITHER PARTY SHALL HAVE ANY OBLIGATION NOR LIABILITY TO THE OTHER (EXCEPT STATED ABOVE) UNTIL A WRITTEN AGREEMENT IS FULLY EXECUTED BY BOTH PARTIES.

STARBUCKS TEMPLATE VERSION EMEA 2019\_01

### ARCHITECT OF RECORD

THIS DRAWING IS A DESIGN DEVELOPMENT DOCUMENT. SITE SPECIFIC MODIFICATIONS MADE UNDER THE RESPONSIBLE CHARGE OF THE ARCHITECT AND/OR ENGINEER-OF-RECORD WILL BE REQUIRED PRIOR TO USING THIS DOCUMENT FOR BIDDING, PERMITTING, OR CONSTRUCTION.

PROJECT NAME:  
**CAMDEN - 253 HIGH ST**

PROJECT ADDRESS:  
**UNITED KINGDOM  
LONDON  
CAMDEN 253 HIGH STREET  
NW1 8EN**

STORE # **68515**  
PROJECT # **94563-001**  
PLAYBOOK FORMAT **SHORT**

INITIAL ISSUE DATE 08/04/22  
DESIGN MANAGER ADRIENNE COOPER  
PROJECT DESIGNER JULIA JANOSA  
CHECKED BY  
CASEWORK CONCEPT  
LEED® AP

### REVISION SCHEDULE

REV	DATE	BY	DESCRIPTION

SHEET TITLE:

**Architectural Site Plan**

SCALE: AS SHOWN (@A3)

**A-1001**

DESIGN DEVELOPMENT ONLY - NOT INTENDED FOR CONSTRUCTION

SIGNAGE FIXTURE SCHEDULE				
DESIGN ID	COUNT	DESCRIPTION	RESP	COMMENTS
XS013	1	SIGN - LOGO DISK PERPENDICULAR NON-ILLUMINATED SMALL - 450MM	SS	REFER TO PAGE A-1001
XS101	1	SIGN - WORDMARK SURFACE MOUNTED ILLUMINATED SMALL - 200MM	SS	REFER TO PAGE A-1001
XS304	1	WINDOW VINYL - MOP + DELIVERY	SS	REFER TO PAGE A-1001
XS308	1	MOP & DELIVERY SIGN, CEILING MOUNTED, ILLUMINATED	SS	SINGLE SIDED SIGN, REFER TO PAGE A-1001

NOTE:  
PLACEHOLDER ARTWORK ONLY - CUSTOM  
COMMISSION ARTWORK BY DAVE BANE  
ILLUSTRATOR TO BE DEVELOPED

- EXTERIOR ELEVATION NOTES
- GENERAL CONTRACTOR TO COORDINATE AND SCHEDULE SIGNAGE INSTALLATION WITH THE SIGNAGE CONTRACTOR
  - GENERAL CONTRACTOR SHALL COORDINATE WITH ELECTRICAL CONTRACTOR TO FURNISH AND INSTALL ELECTRICAL CIRCUITS INCLUDING ALL CONDUIT, CABLING, CONNECTIONS, AND BREAKER AT PANEL BOARD NECESSARY TO SERVE SIGNAGE
  - UNLESS OTHERWISE STATED, GENERAL CONTRACTOR WILL SUPPLY AND INSTALL ALL SIGNAGE SUPPORT FRAMES, BACKING PANELS, STUDWORK, ETC. IN LINE WITH SIGNAGE CONTRACTOR'S DRAWINGS
  - ON REQUEST, SIGNAGE CONTRACTOR WILL SUPPLY SHOP DRAWINGS PRIOR TO FABRICATION TO STARBUCKS CONSTRUCTION MANAGER/PROJECT MANAGER
  - SIGNAGE CONTRACTOR TO INSTALL SIGNAGE IN COMPLIANCE WITH APPROVED PROJECT DRAWINGS AND/OR LOCAL APPLICABLE REGULATIONS
  - GENERAL CONTRACTOR TO NOTIFY CM/PM IMMEDIATELY IF SHOP DRAWINGS OR INSTALLATION IS IN DISCREPANCY WITH STARBUCKS ARCHITECTURAL DRAWINGS
  - GENERAL CONTRACTOR TO CLEAN, PATCH AND REPAIR EXISTING EXTERIOR AS REQUIRED

- GENERAL NOTES
- PROVIDE 75MM HIGH BLACK ACRYLIC STORE ADDRESS ON GLAZING OR PER LOCAL JURISDICTIONAL CODE REQUIREMENTS
  - CM TO CONFIRM ALL DIMENSIONS ON SITE AND ADVISE STARBUCKS OF ANY CHANGES



1 EXTERIOR FRONT ELEVATION  
1:50



STARBUCKS COFFEE  
COMPANY

2401 UTAH AVENUE SOUTH  
SEATTLE, WASHINGTON 98134  
(206) 318-1575

DRAWINGS AND SPECIFICATIONS ARE CONFIDENTIAL AND SHALL REMAIN THE SOLE PROPERTY OF STARBUCKS CORPORATION, WHICH IS THE OWNER OF THE COPYRIGHT IN THIS WORK. THEY SHALL NOT BE REPRODUCED (IN WHOLE OR IN PART), SHARED WITH THIRD PARTIES OR USED IN ANY MANNER ON OTHER PROJECTS OR EXTENSIONS TO THIS PROJECT WITHOUT THE PRIOR WRITTEN CONSENT OF STARBUCKS CORPORATION. THESE DRAWINGS AND SPECIFICATIONS ARE INTENDED TO EXPRESS DESIGN INTENT FOR A PROTOTYPICAL STARBUCKS STORE (WHICH IS SUBJECT TO CHANGE AT ANYTIME) AND DO NOT REFLECT ACTUAL SITE CONDITIONS. NEITHER PARTY SHALL HAVE ANY OBLIGATION NOR LIABILITY TO THE OTHER (EXCEPT STATED ABOVE) UNTIL A WRITTEN AGREEMENT IS FULLY EXECUTED BY BOTH PARTIES.

STARBUCKS TEMPLATE VERSION EMEA 2019\_01

ARCHITECT OF RECORD

THIS DRAWING IS A DESIGN DEVELOPMENT DOCUMENT. SITE SPECIFIC MODIFICATIONS MADE UNDER THE RESPONSIBLE CHARGE OF THE ARCHITECT AND/OR ENGINEER-OF-RECORD WILL BE REQUIRED PRIOR TO USING THIS DOCUMENT FOR BIDDING, PERMITTING, OR CONSTRUCTION.

PROJECT NAME:  
CAMDEN - 253 HIGH ST

PROJECT ADDRESS:  
UNITED KINGDOM  
LONDON  
CAMDEN 253 HIGH STREET  
NW1 8RN

STORE # 68515  
PROJECT # 94563-001  
PLAYBOOK FORMAT SHORT  
INITIAL ISSUE DATE 08/04/22  
DESIGN MANAGER ADRIENNE COOPER  
PROJECT DESIGNER JULIA JANOSA  
CHECKED BY  
CASEWORK CONCEPT  
LEED® AP

REVISION SCHEDULE

REV	DATE	BY	DESCRIPTION

SHEET TITLE:

Exterior Elevations

SCALE: AS SHOWN (@A3)

A-2001

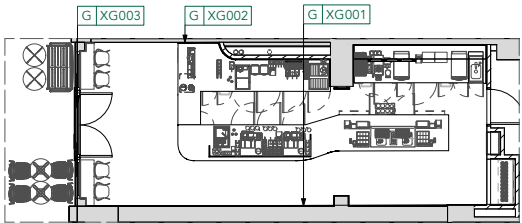


NOTE:  
- GENERAL CONTRACTOR TO CONFIRM SITE DIMENSIONS PRIOR TO MANUFACTURE  
- DETAILS ARE DESIGN INTENT ONLY. GC/MANUFACTURER TO CONFIRM ALL DETAILS & CONSTRUCTIONS

NOTE:  
PLACEHOLDER ARTWORK ONLY - CUSTOM COMMISSION ARTWORK BY DAVE BANE ILLUSTRATOR TO BE DEVELOPED

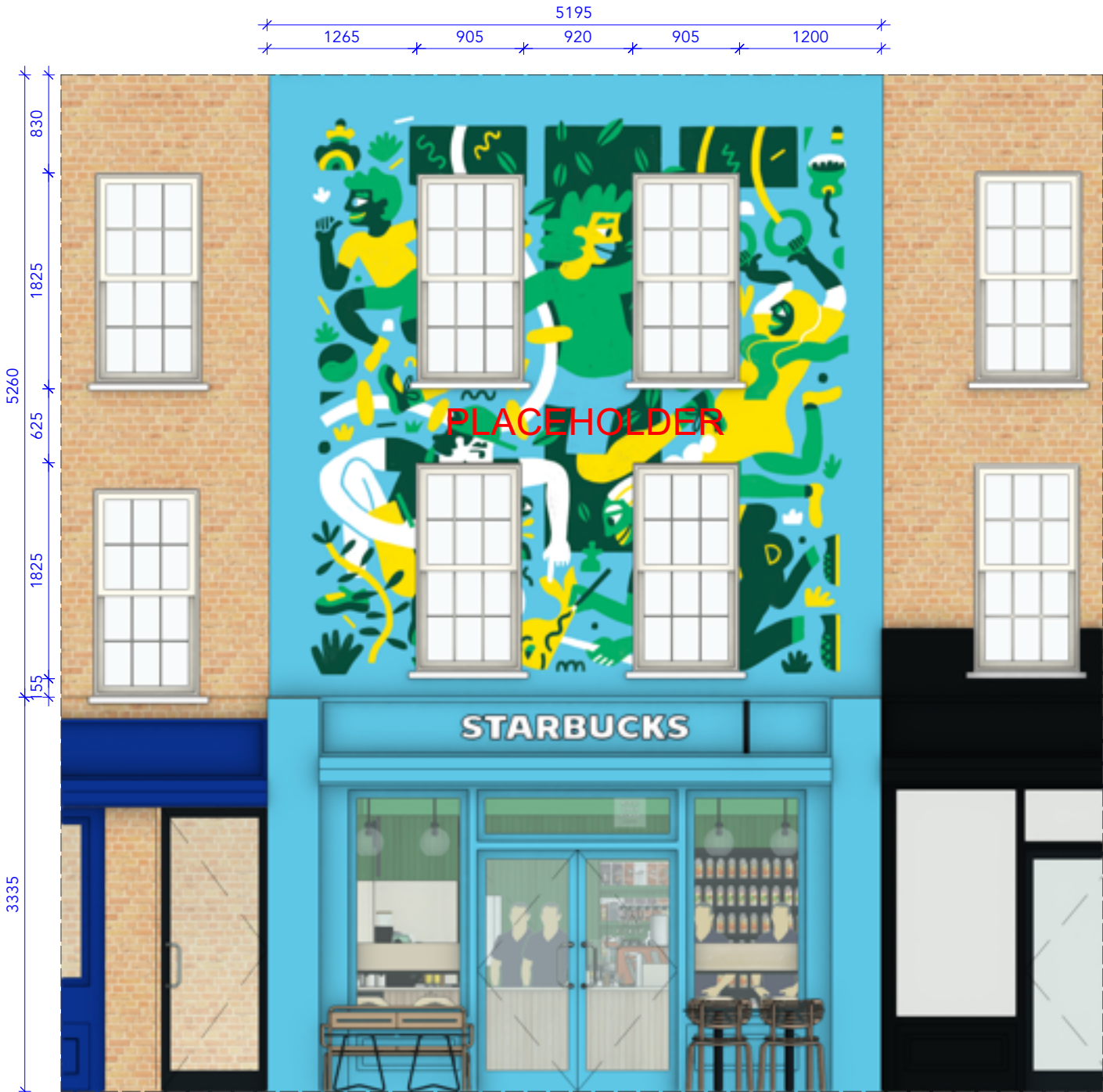
SHEET NOTES

1. WHERE AGREED ANY NON-CATALOGUE ITEMS CAN BE SUPPLIED, CONSTRUCTION MANAGER/PROJECT MANAGER TO PROVIDE MANUFACTURING DRAWINGS FOR STARBUCKS DESIGN REVIEW, COMMENT AND APPROVAL. SAMPLES TO BE PROVIDED ON REQUEST



2 KEY PLAN  
1:200

G GRAPHICS AND ARTWORK SCHEDULE				
DESIGN ID	COUNT	DESCRIPTION	RESP	COMMENTS
XG001	1	MAIN ARTWORK - DAVE BANE	MURAL ARTIST	PLACEHOLDER ARTWORK ONLY - CUSTOM COMMISSION ARTWORK BY DAVE BANE ILLUSTRATOR TO BE DEVELOPED, REFER TO PAGE: I-5001
XG002	1	ETHICAL SOURCING MESSAGE	IGMA	POWDERCOATED STEEL 3MM RAL6012 + WHITE TEXT, REFER TO PAGE: I-5002
XG003	1	EXTERIOR ARTWORK - DAVE BANE	MURAL ARTIST	PLACEHOLDER ARTWORK ONLY - CUSTOM COMMISSION ARTWORK BY DAVE BANE ILLUSTRATOR TO BE DEVELOPED, REFER TO PAGE: I-5003



ID XG003 - EXTERIOR ARTWORK - DAVE BANE

SIZE: APPROXIMATELY 5195MM W X 5260MM H  
FINISH: HANDPAINTED DIRECTLY ON WALL

PLACEHOLDER ARTWORK ONLY - CUSTOM COMMISSION ARTWORK BY DAVE BANE ILLUSTRATOR TO BE DEVELOPED

RESPONSIBILITY: MURAL ARTIST

1 ID XG003 - EXTERIOR ARTWORK - DAVE BANE  
1:50



STARBUCKS COFFEE  
COMPANY

2401 UTAH AVENUE SOUTH  
SEATTLE, WASHINGTON 98134  
(206) 318-1575

DRAWINGS AND SPECIFICATIONS ARE CONFIDENTIAL AND SHALL REMAIN THE SOLE PROPERTY OF STARBUCKS CORPORATION, WHICH IS THE OWNER OF THE COPYRIGHT IN THIS WORK. THEY SHALL NOT BE REPRODUCED (IN WHOLE OR IN PART), SHARED WITH THIRD PARTIES OR USED IN ANY MANNER ON OTHER PROJECTS OR EXTENSIONS TO THIS PROJECT WITHOUT THE PRIOR WRITTEN CONSENT OF STARBUCKS CORPORATION. THESE DRAWINGS AND SPECIFICATIONS ARE INTENDED TO EXPRESS DESIGN INTENT FOR A PROTOTYPICAL STARBUCKS STORE (WHICH IS SUBJECT TO CHANGE AT ANYTIME) AND DO NOT REFLECT ACTUAL SITE CONDITIONS. NEITHER PARTY SHALL HAVE ANY OBLIGATION NOR LIABILITY TO THE OTHER (EXCEPT STATED ABOVE) UNTIL A WRITTEN AGREEMENT IS FULLY EXECUTED BY BOTH PARTIES.

STARBUCKS TEMPLATE VERSION EMEA 2019\_01

ARCHITECT OF RECORD

THIS DRAWING IS A DESIGN DEVELOPMENT DOCUMENT. SITE SPECIFIC MODIFICATIONS MADE UNDER THE RESPONSIBLE CHARGE OF THE ARCHITECT AND/OR ENGINEER-OF-RECORD WILL BE REQUIRED PRIOR TO USING THIS DOCUMENT FOR BIDDING, PERMITTING, OR CONSTRUCTION.

DESIGN DEVELOPMENT ONLY - NOT INTENDED FOR CONSTRUCTION

PROJECT NAME:  
CAMDEN - 253 HIGH ST

PROJECT ADDRESS:  
UNITED KINGDOM  
LONDON  
CAMDEN 253 HIGH STREET  
NW1 8JN

STORE # 68515  
PROJECT # 94563-001  
PLAYBOOK FORMAT SHORT

INITIAL ISSUE DATE 08/04/22  
DESIGN MANAGER ADRIENNE COOPER  
PROJECT DESIGNER JULIA JANOSA  
CHECKED BY  
CASEWORK CONCEPT  
LEED® AP

REVISION SCHEDULE

REV	DATE	BY	DESCRIPTION

SHEET TITLE:

Artwork Details

SCALE: AS SHOWN (@A3)

I-5003