

HEAD OFFICE:  
WEST LEIGH LIMITED  
11-13 Spa Road, London, SE16 3RB  
Telephone: 020-7232-0030  
Facsimile: 020-7232-1763  
Web: www.west-leigh.co.uk  
email: info@west-leigh.co.uk



constructionline



Registered Company



Steel Window Association

## SPECIFICATION

CONSTRUCTION	W20 Steel Sections
MATERIAL	Mild steel
FIXING BY	West Leigh Limited.
GLASS BY	West Leigh Limited.
GLAZING BY	West Leigh Limited.
FIXING HOLES	Standard CSK.
GLAZING BEADS	All Chamfered Clip-on Beads. INTERNAL
GLAZE	16mm Double Glazed Units
EXT. MASTIC BY	West Leigh Limited. T.B.C.
INT. MASTIC BY	Others. Arbosil 1096 Silicone recommended.
FINISH	Hot Dipped Galvanised and Polyester Powder Coated: RAL 7046 MATT (30% gloss)

## FITTINGS

SEE DRAWING W100097-007

## GLAZING NOTES

SEE DRAWING W100097-007

Please note that permissible bead tolerances of up to 2mm may occur as part of the standard manufacturing tolerances.

## AMENDMENTS

A	04.03.22	Details amended to suit window not door
B	09.03.22	Colour amended

CONTRACTS NO. W.100097

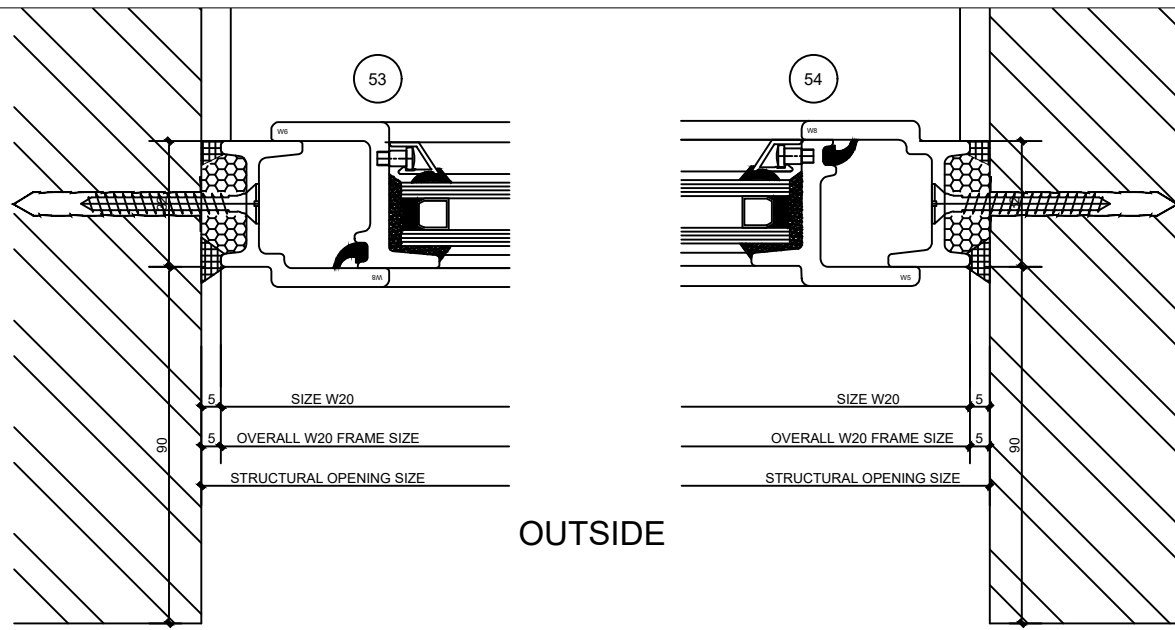
WORKS NO. W.100097

SITE  
BALDERTON CAPITAL  
28-32 BRITANIA STREET  
KINGS CROSS. LONDON.  
WC1X 9JF

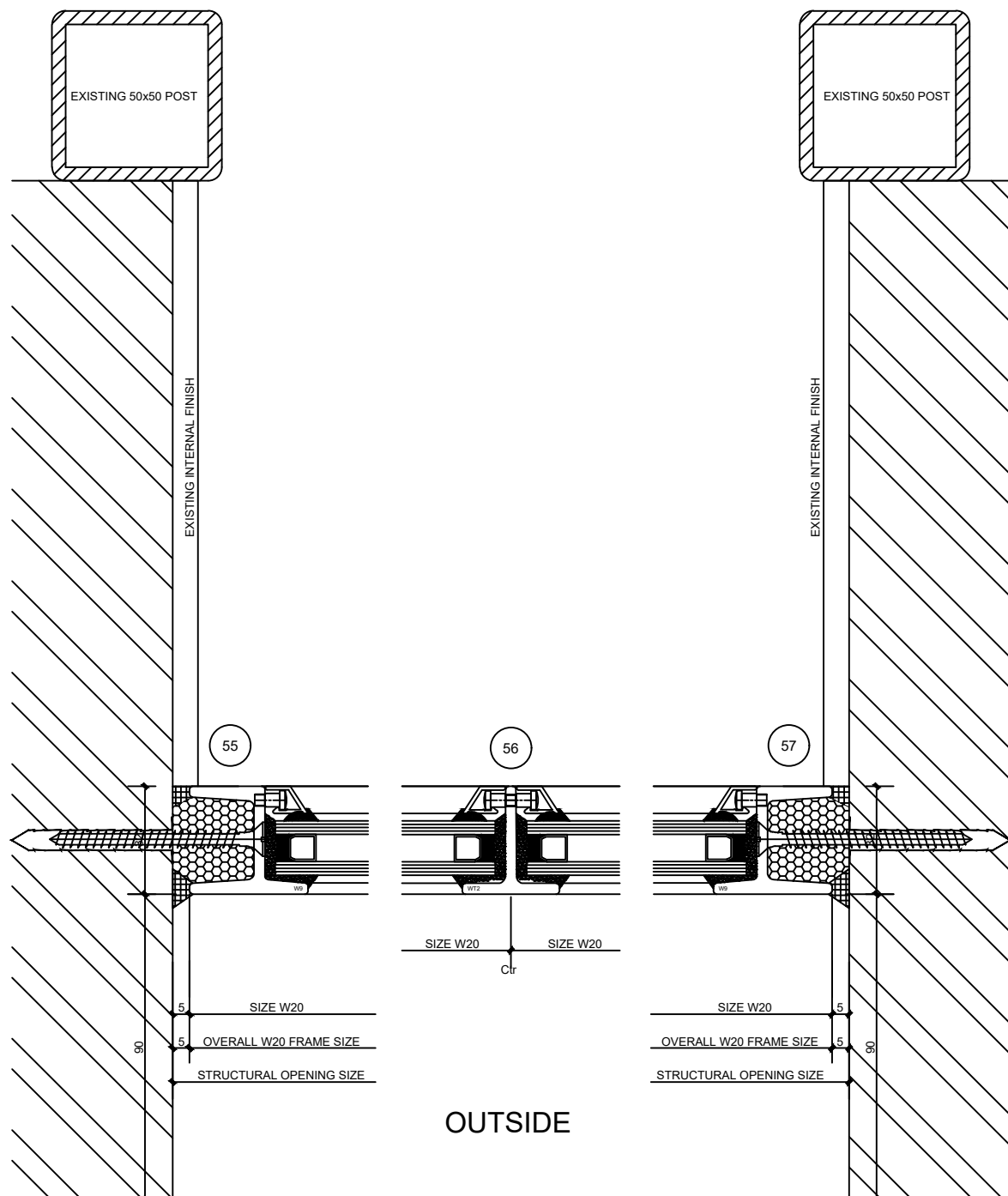
## TITLE OF DRAWING

DETAILS OF REPLACEMENT  
W20 STEEL DOOR  
ON WICKLOW STREET ELEVATION

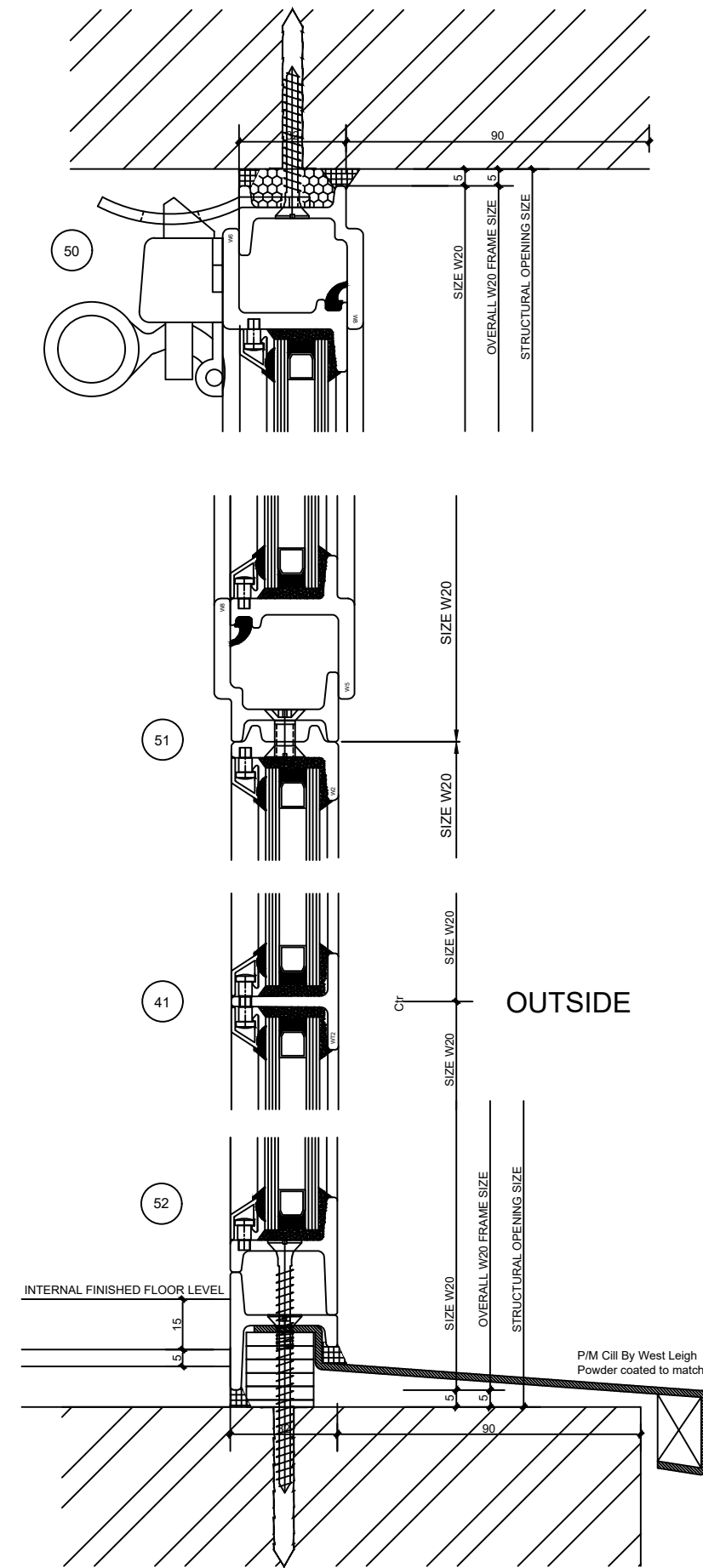
SCALE	1:1 @ A1	DRAWN	03.03.22	DE
DRAWING NO.	W100097-112	CHECKED	-	-
		REVISION	B	STATUS
				FOR CONSTRUCTION



OUTSIDE



OUTSIDE



OUTSIDE