

SPECIFICATION

CONSTRUCTION	W20 Steel Sections
MATERIAL	Mild steel
FIXING BY	West Leigh Limited.
GLASS BY	West Leigh Limited.
GLAZING BY	West Leigh Limited.
FIXING HOLES	Standard CSK.
GLAZING BEADS	All Chamfered Clip-on Beads. INTERNAL
GLAZE	16mm Double Glazed Units
EXT. MASTIC BY	West Leigh Limited. T.B.C.
INT. MASTIC BY	Others. Arbosil 1096 Silicone recommended.
FINISH	Hot Dipped Galvanised and Polyester Powder Coated: RAL 7046 MATT (30% gloss)

FITTINGS

SEE DRAWING W100097-007

GLAZING NOTES

SEE DRAWING W100097-007

Please note that permissible bead tolerances of up to 2mm may occur as part of the standard manufacturing tolerances.

AMENDMENTS  
A 09.03.22 Colour amended

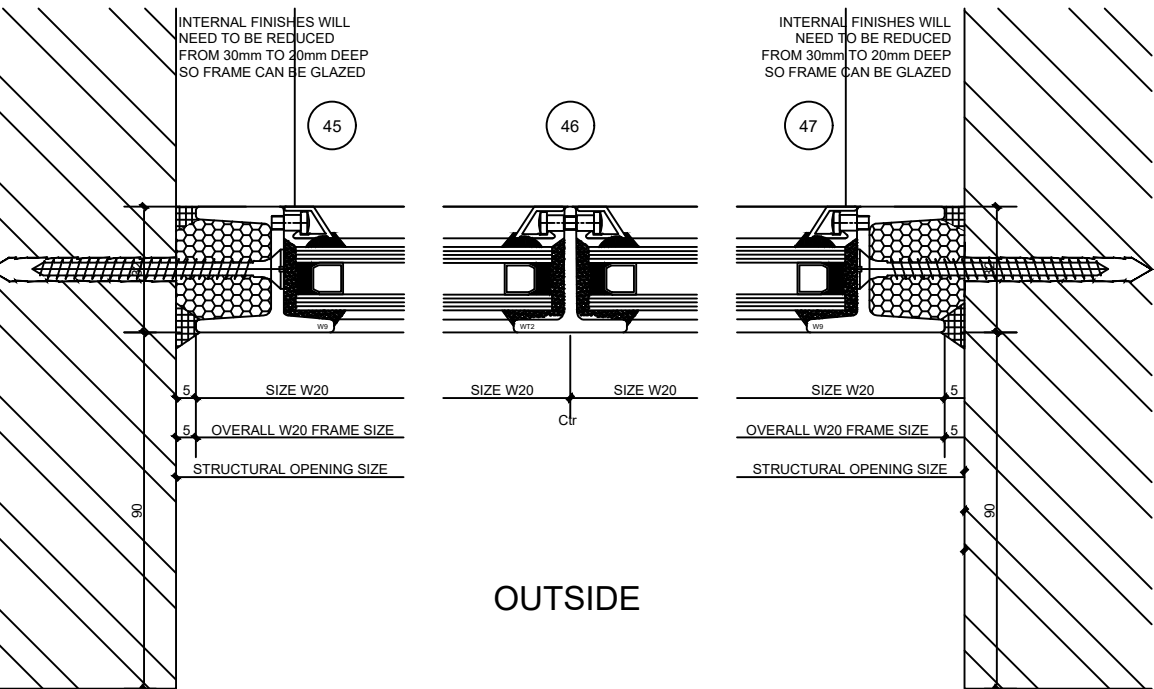
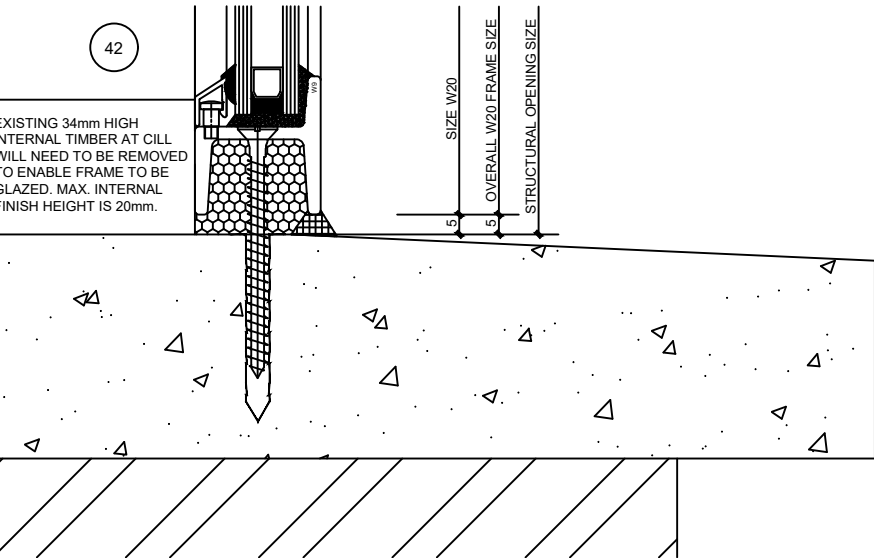
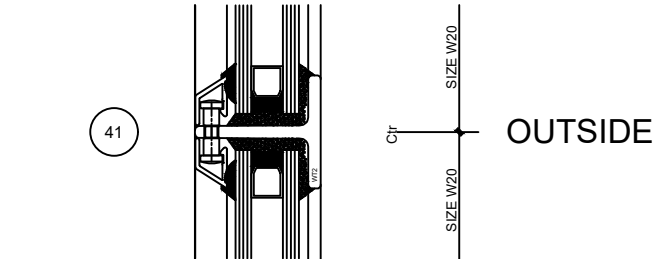
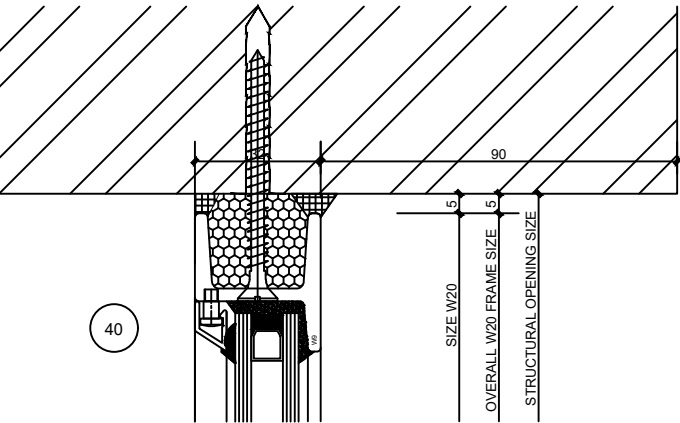
CONTRACTS NO. W.100097

WORKS NO. W.100097

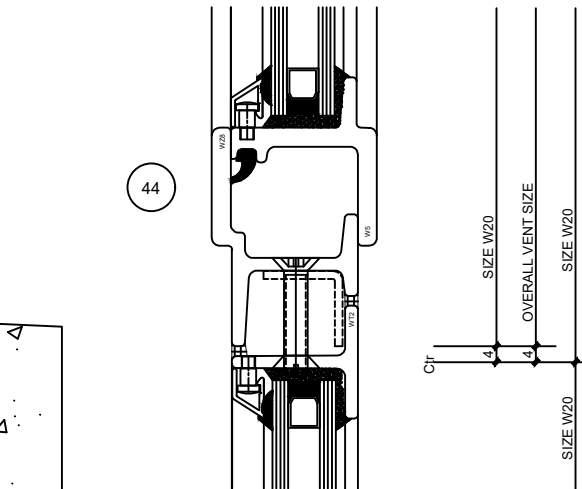
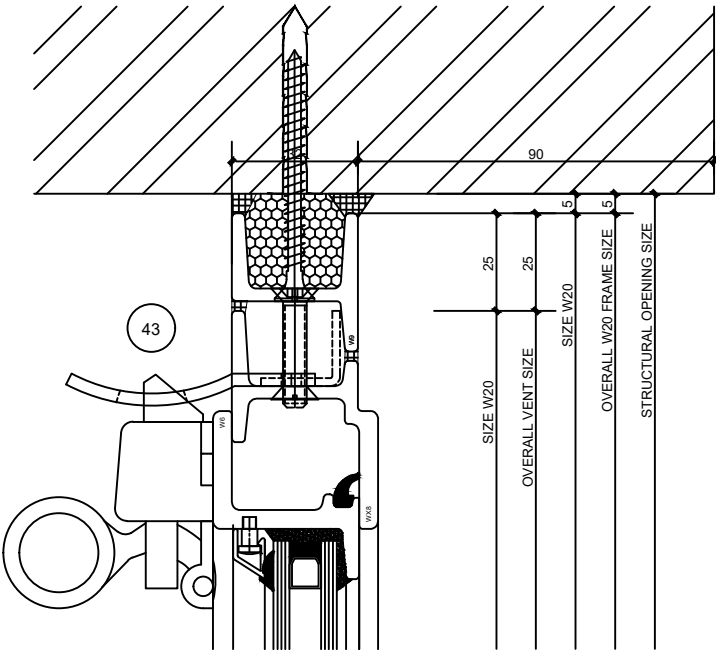
SITE  
BALDERTON CAPITAL  
28-32 BRITANIA STREET  
KINGS CROSS. LONDON.  
WC1X 9JF

TITLE OF DRAWING  
DETAILS OF REPLACEMENT  
W20 STEEL WINDOW  
ON WICKLOW STREET ELEVATION

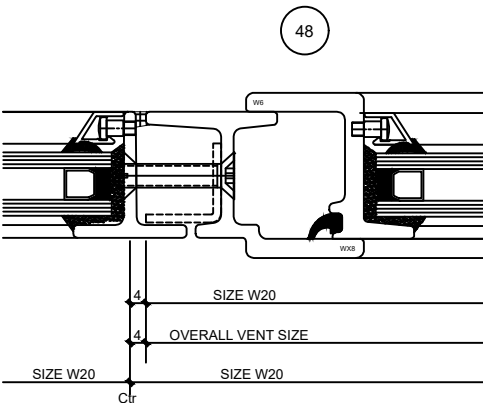
SCALE 1:1 @ A1	DRAWN 03.03.22	DE -
DRAWING NO. W100097-111	CHECKED A	STATUS FOR CONSTRUCTION



THIS DRAWING IS TO BE READ IN CONJUNCTION WITH DRAWING Nos. W100097-007



OUTSIDE



OUTSIDE

