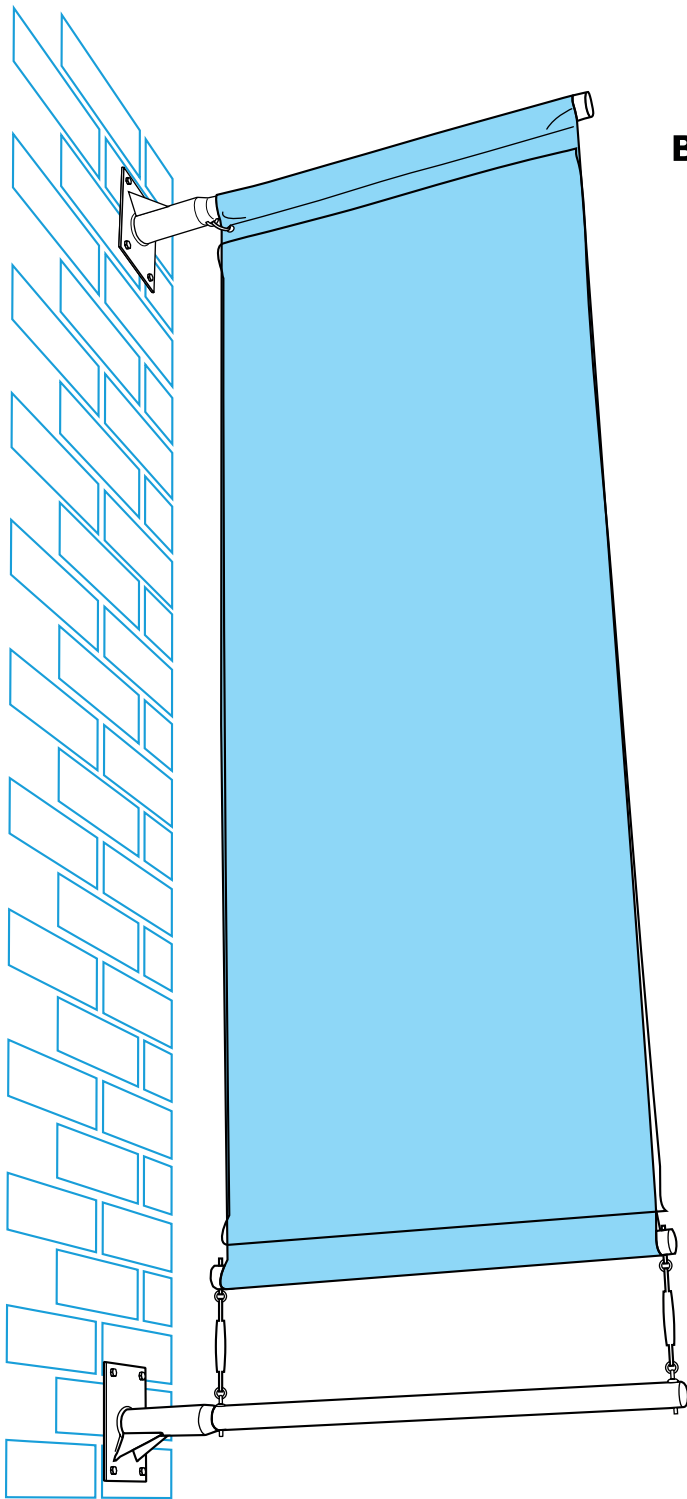


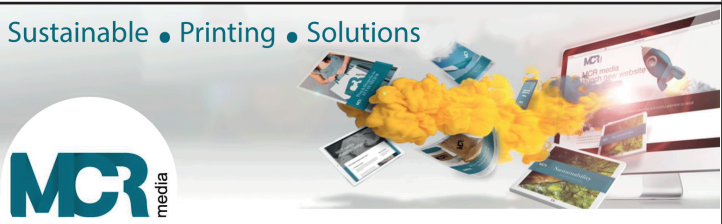
Heavy Duty Systems

Banner Poles



Banner Supports

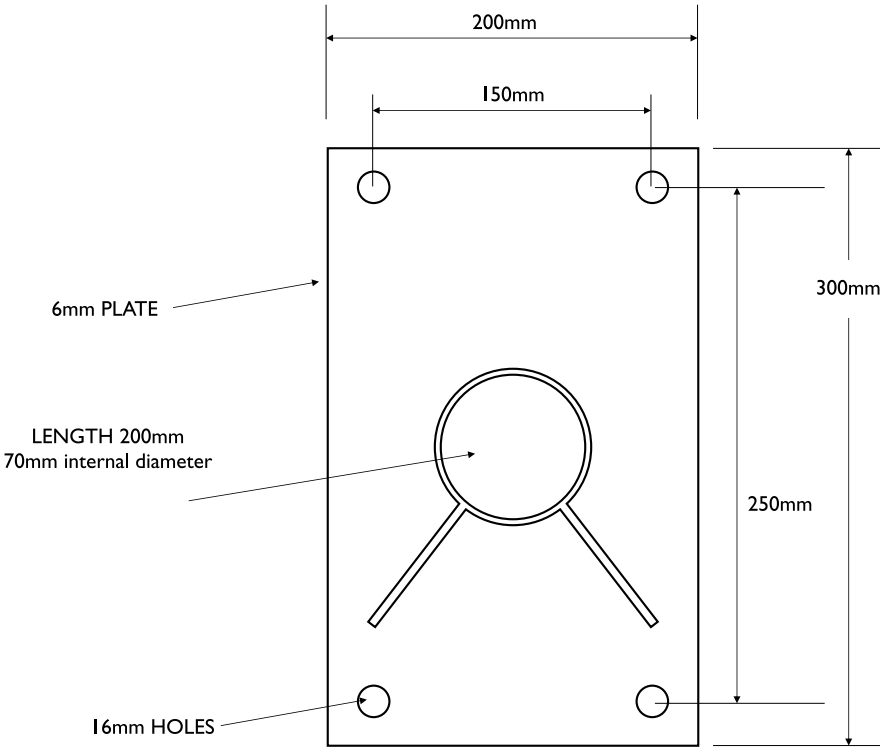
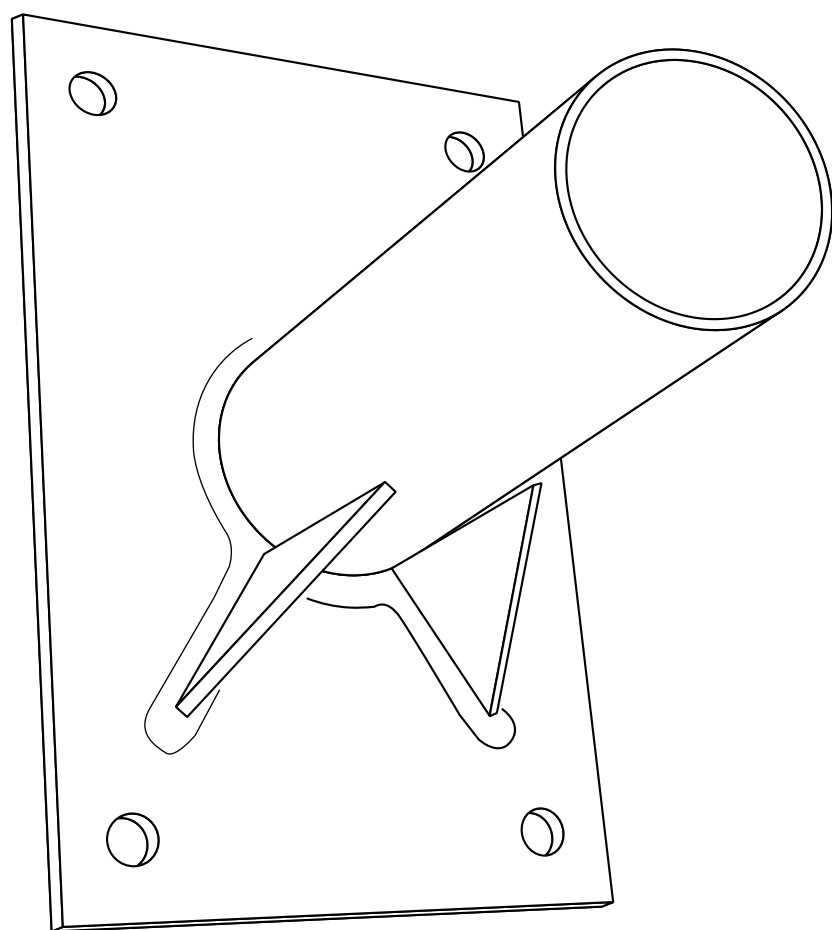
- Banner bracket and poles suitable for outdoor use PVC banners
- Welded steel brackets and aluminium poles in 60mm tube – gloss finished in white
- Bracket plate size 200mm x 300mm c/w holes
- A tensioner is always recommended with the Heavy Duty Systems
- Stay wires are available for additional support
- All fittings are stainless steel



Item description.	Client - united Grand Lodge	Revision No - 1	www.mcrmedia.co.uk 01273233558
Product and installation guide and method	Job No -	Date - 01.07.2019	
	Contact -	Scale - N/A	

Heavy Duty Systems

Banner Poles



Item description.
Product and installation guide and method

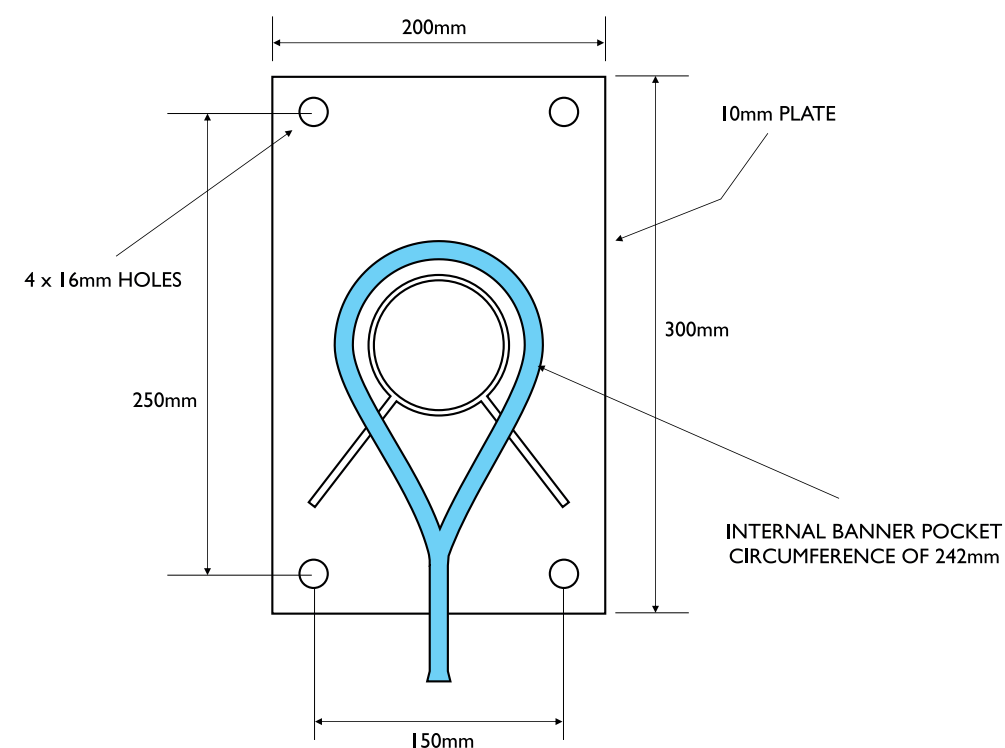
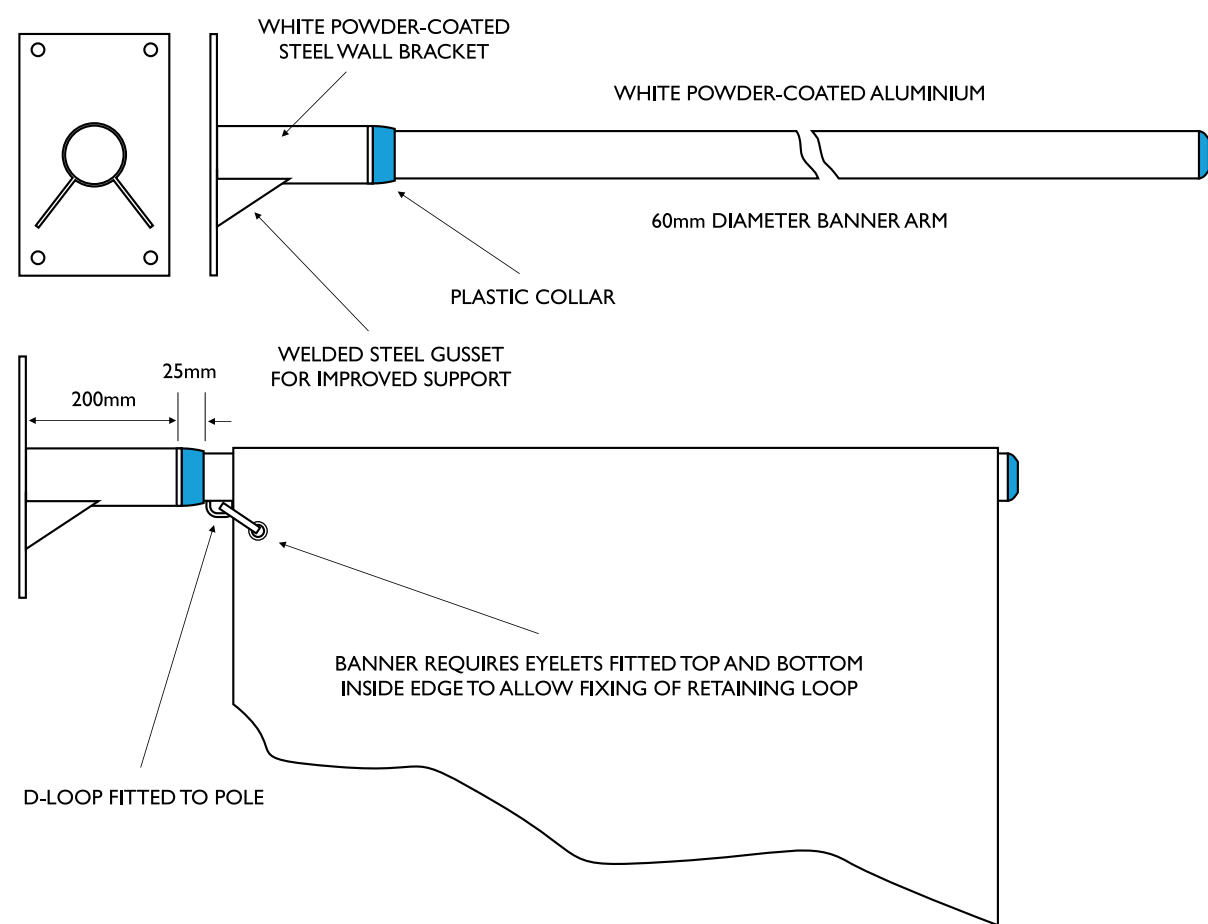
Client - united Grand Lodge
Job No -
Contact -

Revision No - 1
Date - 01.07.2019
Scale - N/A

www.mcrmedia.co.uk
01273233558

Heavy Duty Systems

Pole and fitting details

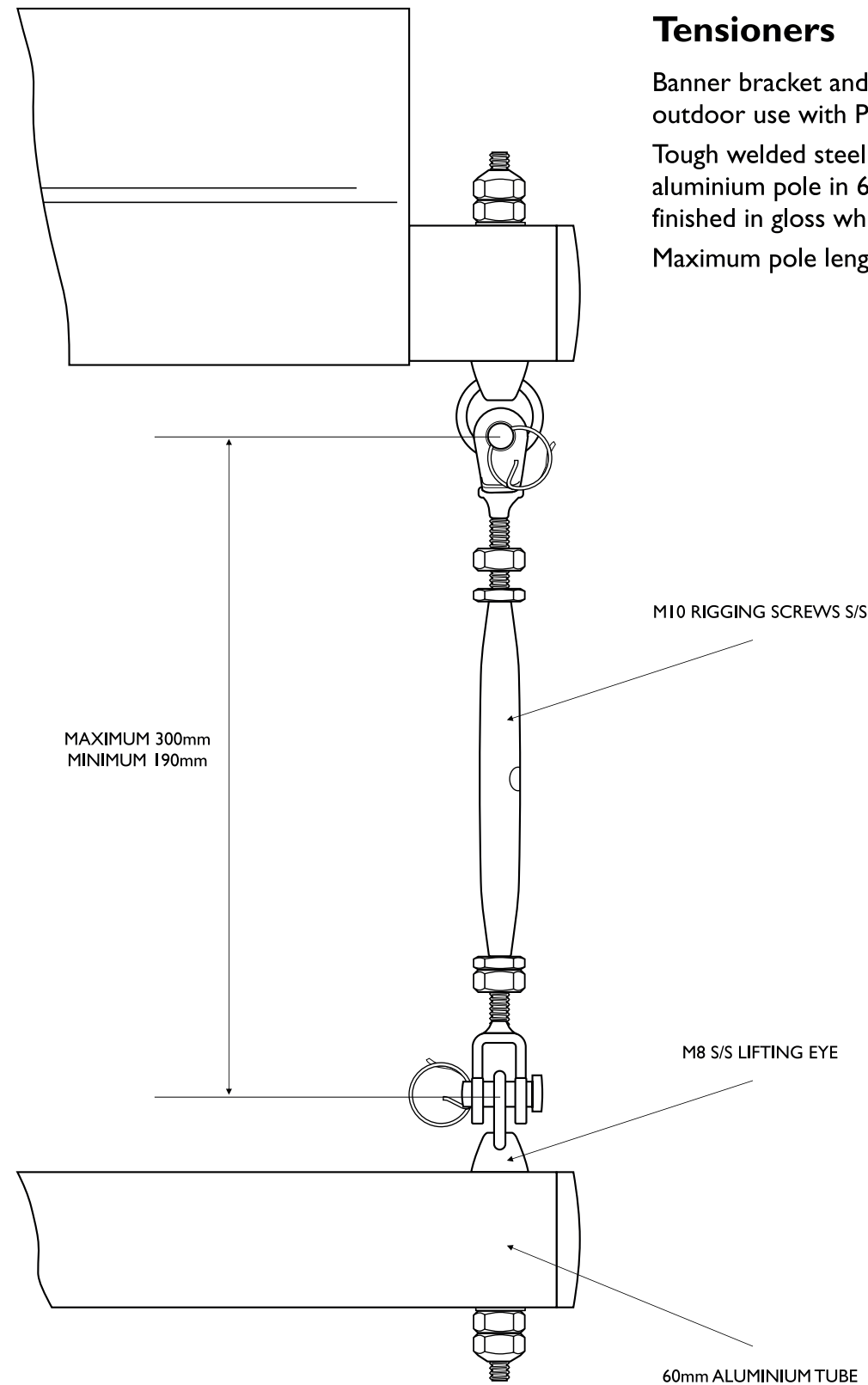


Item description.	Client - united Grand Lodge	Revision No - 1	www.mcrmedia.co.uk 01273233558
Product and installation guide and method	Job No -	Date - 01.07.2019	
	Contact -	Scale - N/A	

Please check this proof thoroughly to make sure all sizes, colours and spelling are correct. MCR Media are not responsible for reprints after you have confirmed you are happy to proceed with the production of work.

Heavy Duty Systems

Banner Poles



Tensioners

Banner bracket and pole suitable for outdoor use with PVC banners.
Tough welded steel bracket, aluminium pole in 60mm tube. Both finished in gloss white.
Maximum pole length 1.5m.



Item description.
Product and installation guide and method

Client - united Grand Lodge
Job No -
Contact -

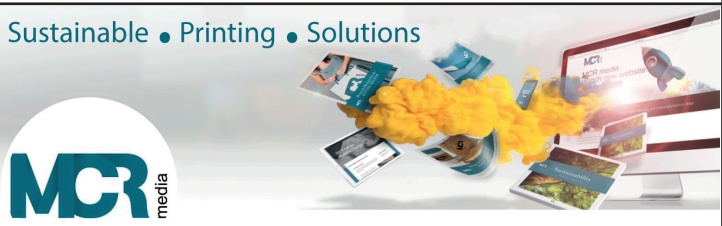
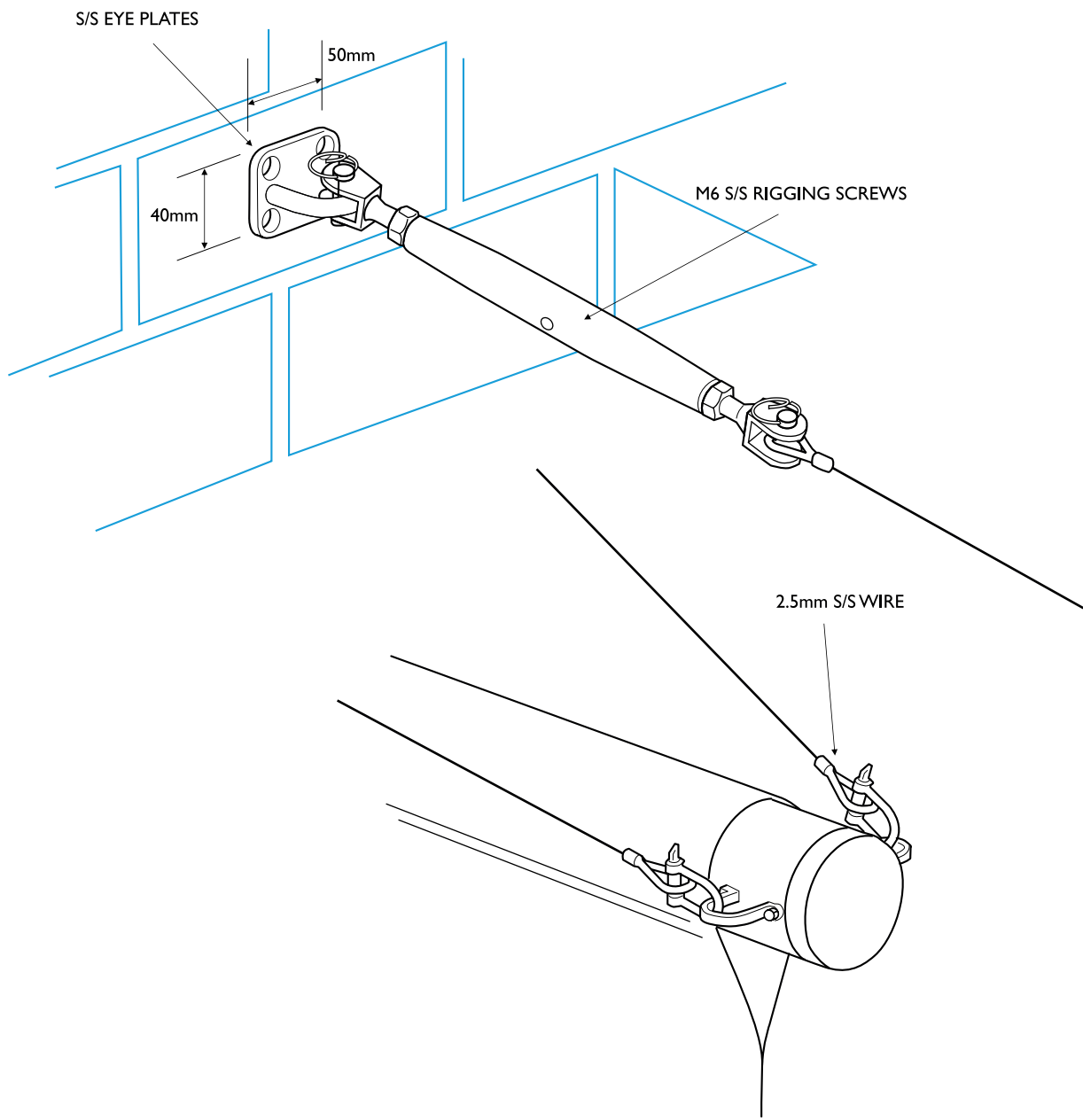
Revision No - 1
Date - 01.07.2019
Scale - N/A

www.mcrmedia.co.uk
01273233558

Heavy Duty Systems

Banner Poles Stay Wires

For deep banner drops on exposed sites, Stay Wires and Tension Screws are available as optional extras to give greater support to the banner arms.
All fittings are in high quality stainless steel.



Item description.	Client - united Grand Lodge	Revision No - 1	www.mcrmedia.co.uk 01273233558
Product and installation guide and method	Job No -	Date - 01.07.2019	
	Contact -	Scale - N/A	

Please check this proof thoroughly to make sure all sizes, colours and spelling are correct. MCR Media are not responsible for reprints after you have confirmed you are happy to proceed with the production of work.

Installation Method

I can confirm that we would fix the plates to the wall by drilling 4 holes per plate and fixing in M8 threaded rod using a 2 part chemical anchor system.

The above process would also be used to install the tension wires.

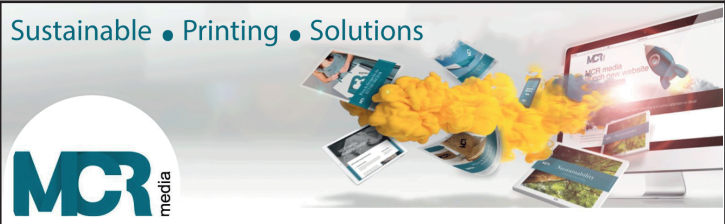
The plates would then fix over the rods with nyloc nuts and we would cut any excess off the rods.

All base plates must be installed onto flat areas of wall and not to the columns.

For access we would need to hire a cherry picker which can be operated from the parking spaces on the side of the building.

The installation should take 2 days, we will bring traffic cones to corner of the working area.

the client would need to arrange the closing of the parking spaces and pavement on the side and front where necessary.



Item description.	Client - united Grand Lodge	Revision No - 1	www.mcrmedia.co.uk 01273233558
Product and installation guide and method	Job No -	Date - 01.07.2019	
	Contact -	Scale - N/A	